

Supplementary Information

Figure S1. Cells exhibited a polygonal, cobble-stone epithelioid morphology typical of peritoneal mesothelial cells (PMCs) (A); These cells were cytokeratin-positive and failed to express factor VIII (B).

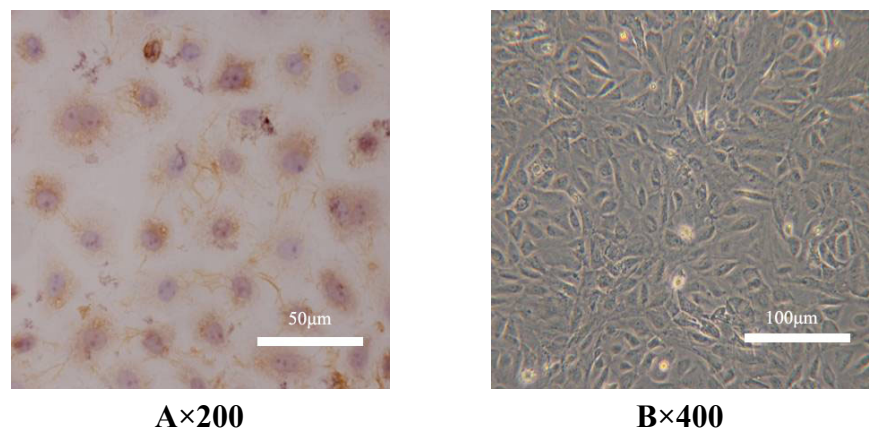


Figure S2. A part of DNA sequencing result of the full length *A20* gene in the recombined expression plasmid.

