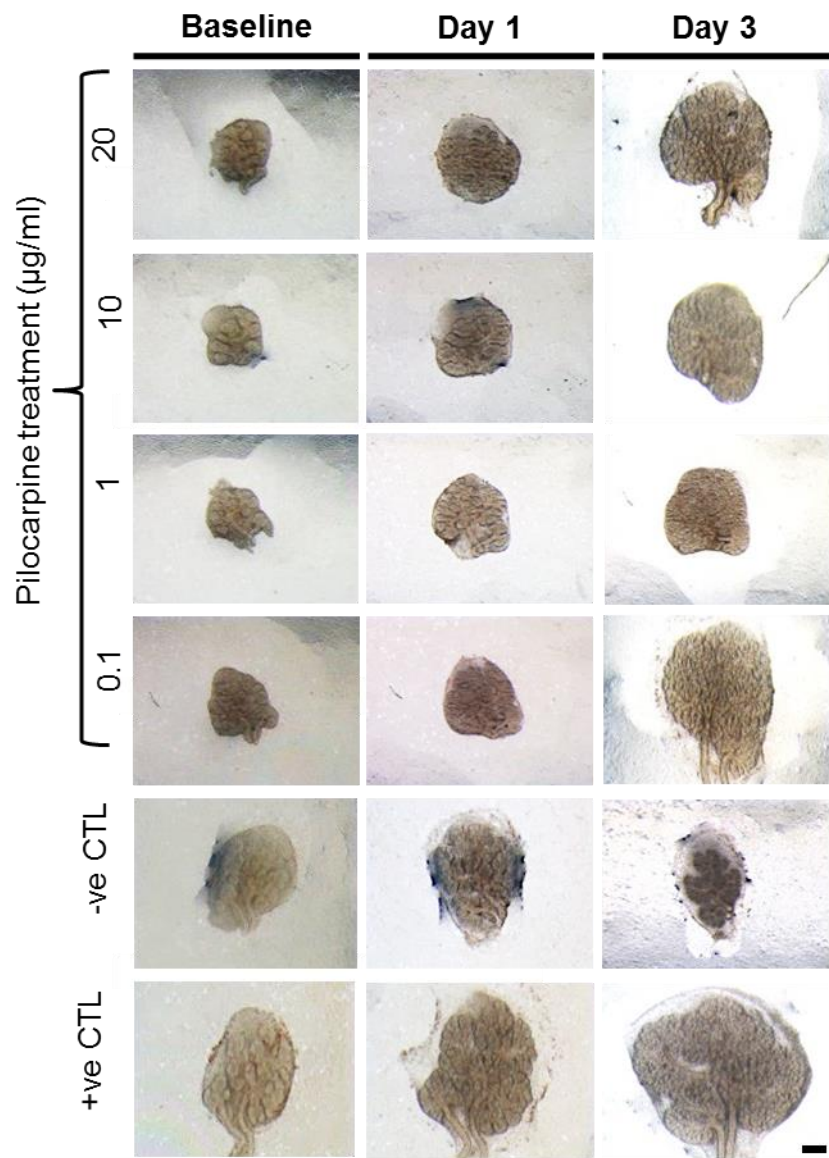


**Supplementary Table S1.** Table displaying the three fabricated nanofiber mats with different diameters (0.5, 1 and 2mm) and similar internal morphology and structural properties (thickness, mesh porosity, and nanofiber diameter).

Nanofiber mat diameters (mm)	Total pilocarpine ( $\mu$ g)	Total nanofiber ( $\mu$ g)
0.5	0.21	25
1	0.42	50
2	0.84	100



**Supplementary Figure S1.** Salivary gland growth shown in brightfield microscopy before and after treatment with pilocarpine-loaded nanofiber discs in the *ex vivo* SG culture model. Legend: +ve CTL: treated with growth media only. -ve CTL: treated with gamma radiation in growth media only to induce cytotoxicity. Mag.: 3.2x. Scale bar: 100 $\mu\text{m}$