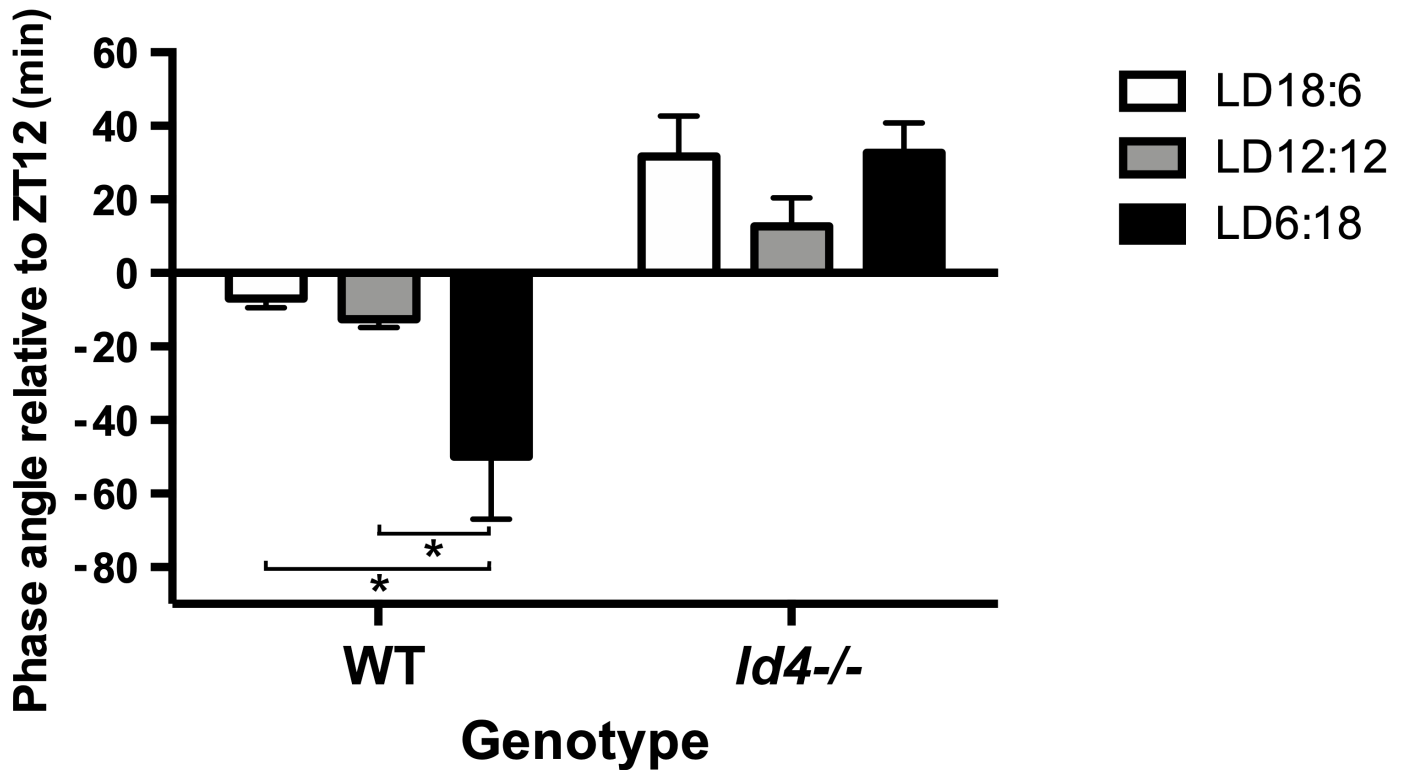


## Phase angle under different photoperiods



**Figure S1.** The relationship between photoperiod and phase angle of activity onset is different between the genotypes. Phase-angle of activity onset relative to lights OFF (ZT12) of wild-type (WT) (left) and *Id4*<sup>-/-</sup> (right) mice on 18:6, 12:12, and 6:18 LD cycles. Values are group means  $\pm$  SEM for wild-type ( $n = 20$ ) and *Id4*<sup>-/-</sup> ( $n = 16$ ) mice. Increasing daylength in wild-type mice correlated with an increased negative phase angle relative to lights off (ZT12.0) (\* $p < 0.05$ ). No differences between photoperiods were detected for *Id4*<sup>-/-</sup> mice, which consistently expressed a positive phase angle (n.s.). See Figure 4 for representative actograms and pairwise genotypic comparisons of wild-type and *Id4*<sup>-/-</sup> mice.