

Supplementary data

Wound healing effect of gintonin involves lysophosphatidic acid receptor/vascular endothelial growth factor signaling pathway in keratinocytes

Sun-Hye Choi^{1,†}, Kyung-Jong Won^{2,†}, Rami Lee¹, Han-Sung Cho¹, Sung-Hee Hwang^{3,*} and Seung-Yeol Nah^{1,*}

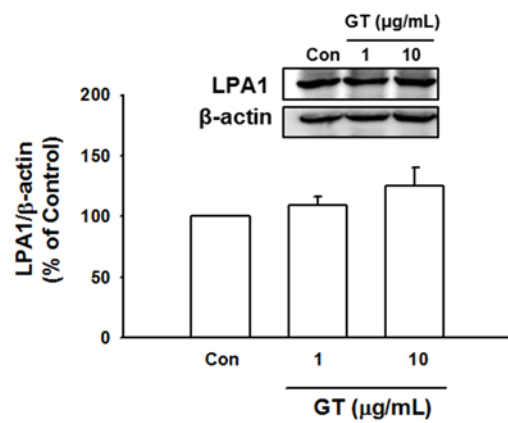
¹ Ginsentology Research Laboratory and Department of Physiology, College of Veterinary Medicine, Konkuk University, Seoul 05029, Republic of Korea; vettman@naver.com (S.-H.C.), rmllee12@konkuk.ac.kr (R.L.), earth02@konkuk.ac.kr (H.-S.C), syn-ah@konkuk.ac.kr (S.-Y.N)

² Department of Physiology and Medical Science, School of Medicine, Konkuk University, Seoul 05029, Republic of Korea; kjwon@kku.ac.kr (K.-J.W.)

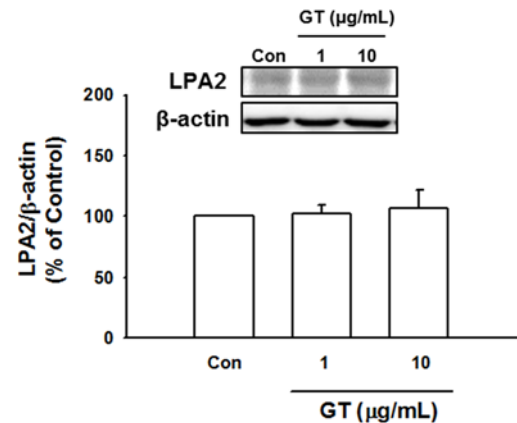
³ Department of Pharmaceutical Engineering, College of Health Sciences, Sangji University, Wonju, 26339, Republic of Korea; sunghhwang@sangji.ac.kr (S.-H.H)

* Correspondence: synah@konkuk.ac.kr (S.-Y.N), sunghhwang@sangji.ac.kr (S.-H.H); Tel.: +82-2-450-4154 (S.-Y.N), +82-33-738-7922 (S.-H.H)

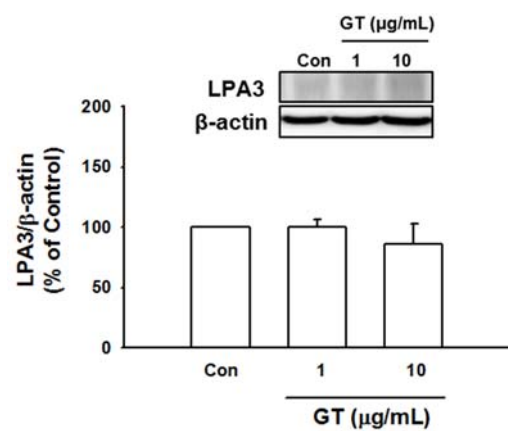
[†] These authors contributed equally to this work.



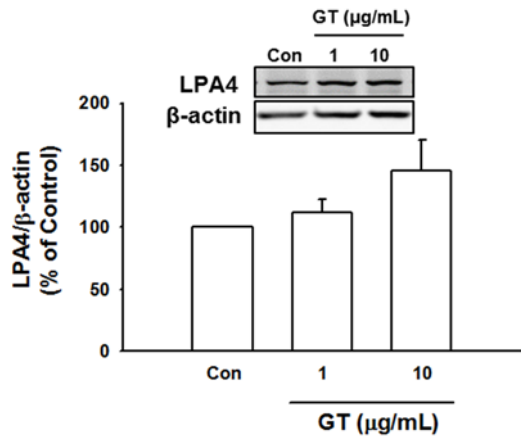
(a)



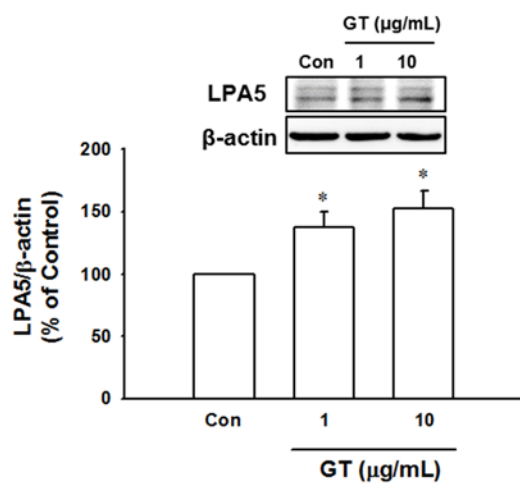
(b)



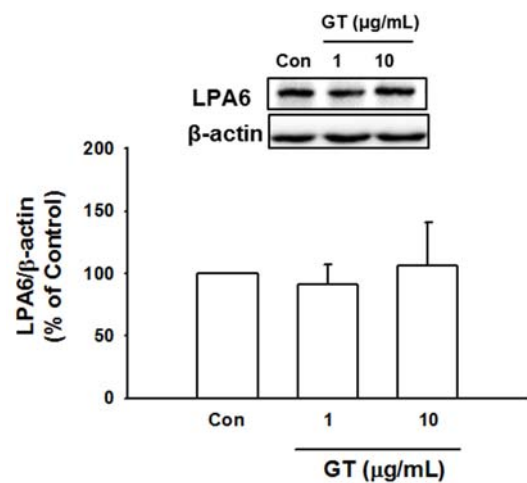
(c)



(d)



(e)



(f)

Figure S1. Expression of lysophosphatidic acid (LPA) receptor subtypes in HaCaT cells. Cells were incubated in serum-free medium with gintonin (GT, 1 or 10 μg/mL) for 6 h. Then, the cell lysates were analyzed by immunoblotting, using LPA receptor subtypes LPA1-6 antibodies as described in the Materials and Methods section of the main text. Response in untreated cell (Con) was considered as 100%. Data represent means ± S.E.M. ($n = 6$); * $p < 0.05$, vs. untreated cells.

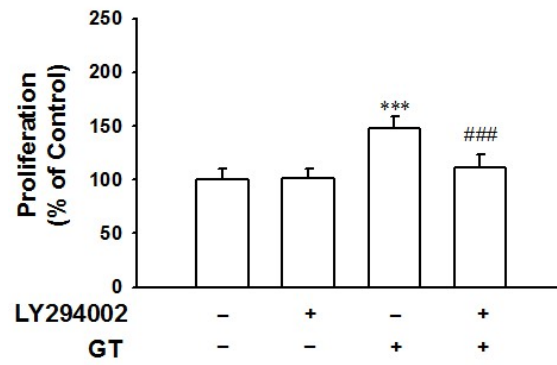


Figure S2. Effect of PI3K inhibitor LY294002 on gintonin-induced proliferation of HaCaT cells. Cells were incubated in serum-free medium with gintonin (GT, 10 μ g/mL) in the presence or absence of inhibitor for 24 h. Then, XTT-based assay was performed. LY294002 (25 μ M). Response in untreated cell was considered as 100%. Data represent means \pm S.E.M. ($n = 6$); *** $p < 0.001$, vs. untreated cells; ### $p < 0.001$, vs. GT alone.