

Article

Unusual Structural Features in the Adduct of Dirhodium Tetraacetate with Lysozyme

Domenico Loreto ¹, Giarita Ferraro ² and Antonello Merlino ^{1,*}

¹ Department of Chemical Sciences, University of Naples Federico II, 80126 Napoli, Italy; domenico.loreto@unina.it

² Department of Chemistry “Ugo Schiff”, University of Florence, via della Lastruccia, 3-13, 50019 Sesto Fiorentino, Florence, Italy; giarita.ferraro@unifi.it

* Correspondence: antonello.merlino@unina.it

Supporting information

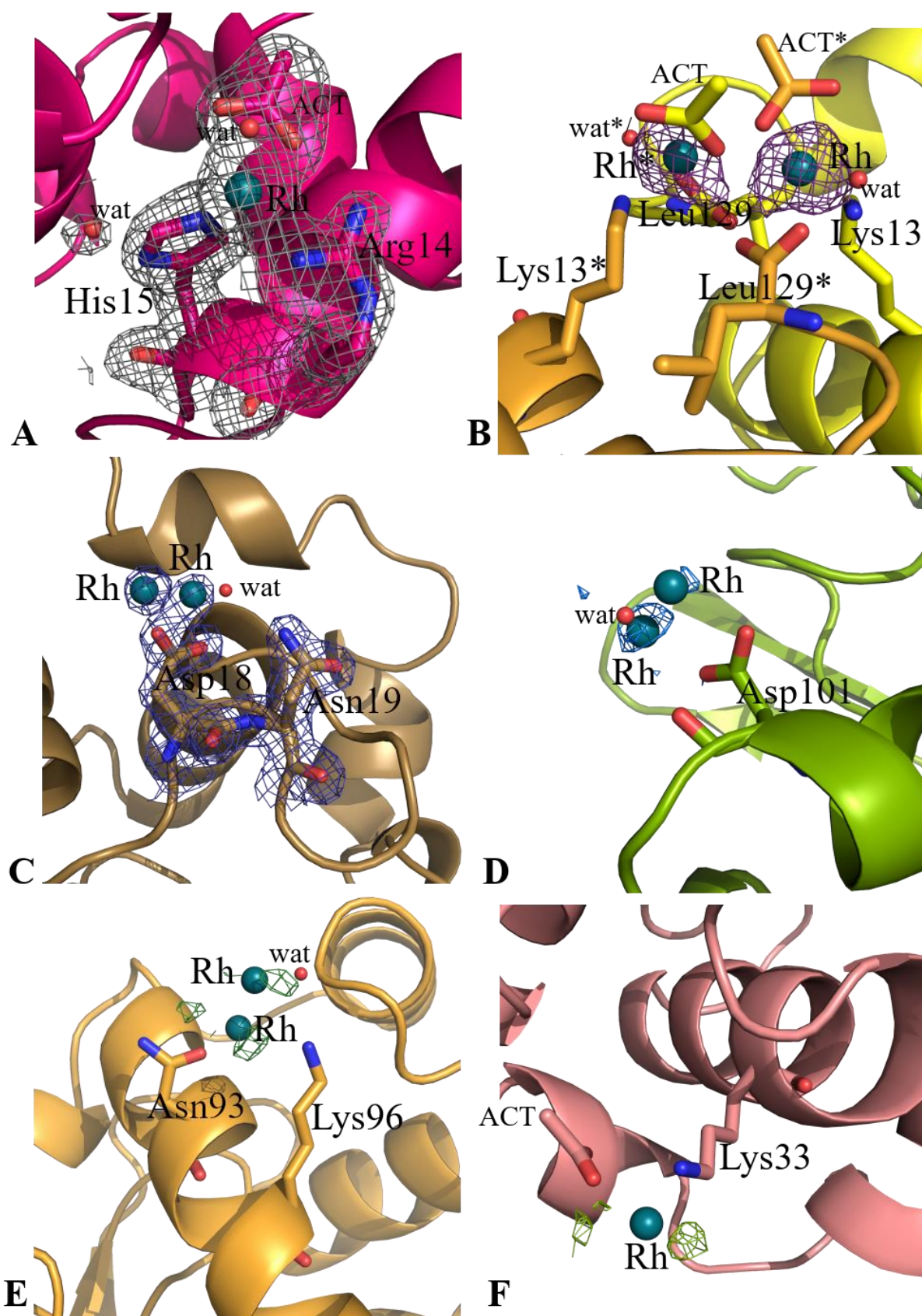


Figure S1. Examples of anomalous difference electron density maps at the Rh binding sites close to side chains of Arg14 and His15 (A), close to the C-terminal tail (B), close to side chain of Asp18 (C), Asp101 (D), Asn93 and Lys96 (E) and of Lys33 (F) in the structures of Rh/HEWL adducts here reported. Maps are contoured at 3.0σ in panels A and B and at 2.0σ in the other panels.

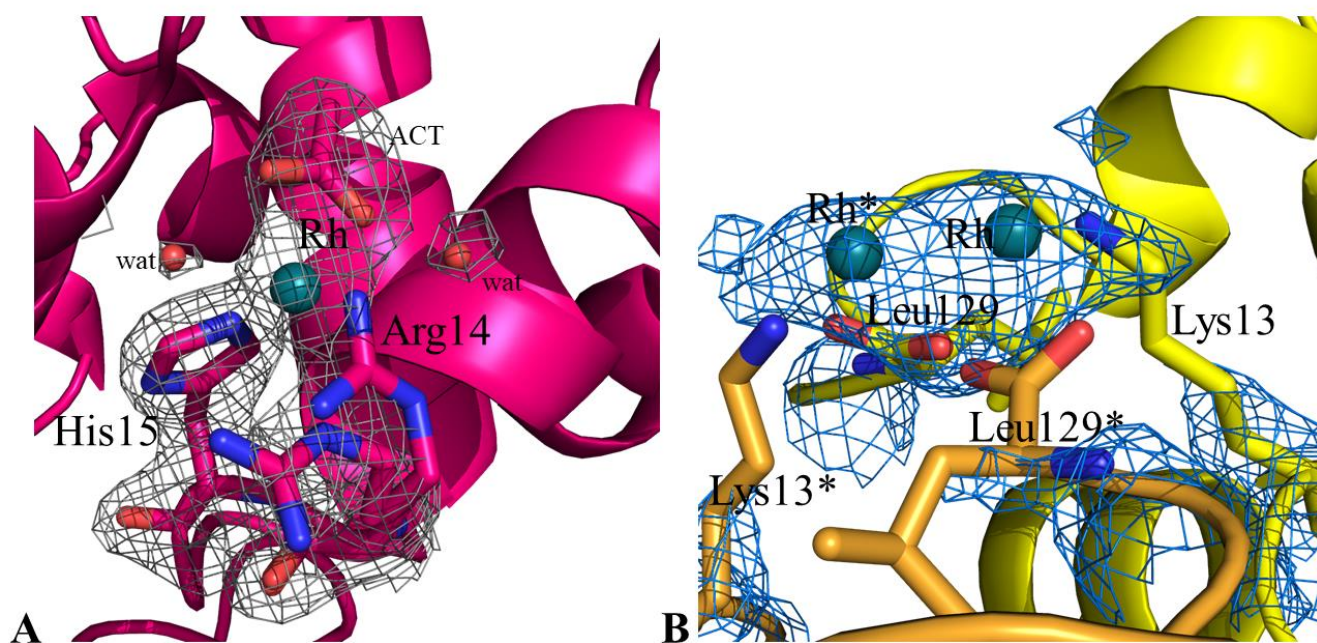


Figure S2. Details of Rh binding sites close to the side chains of Arg14 and His15 (**A**) and close to the C-terminal tail and the side chain of Lys13 (**B**) in Crystal 5. 2Fo-Fc electron density maps are contoured at 1.0 σ . * refers to atoms from symmetry related molecules.

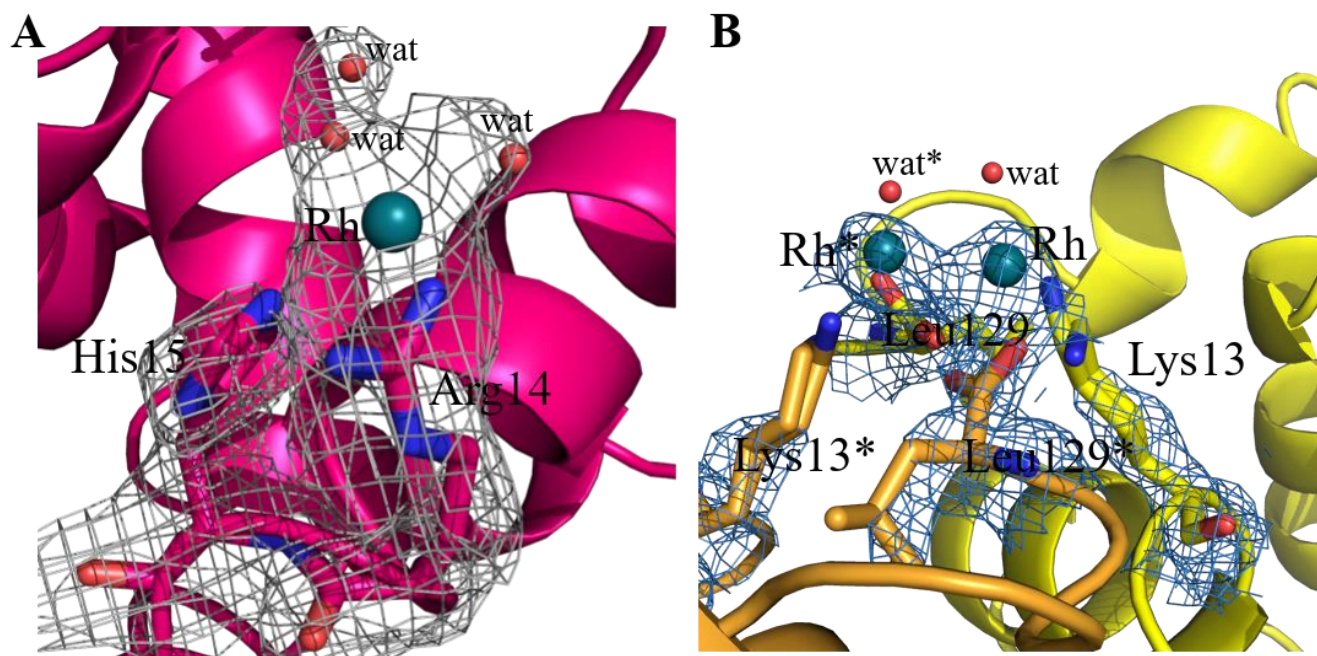
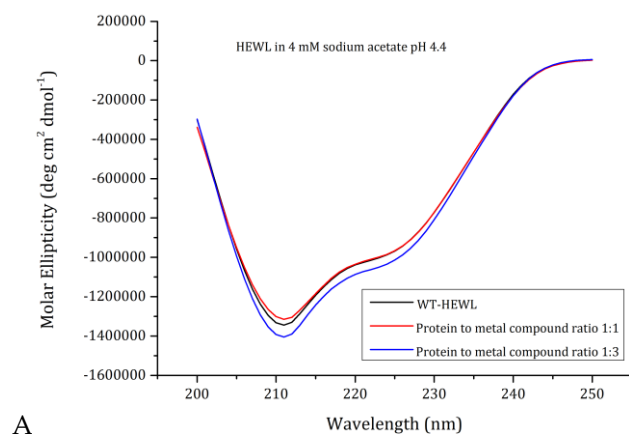
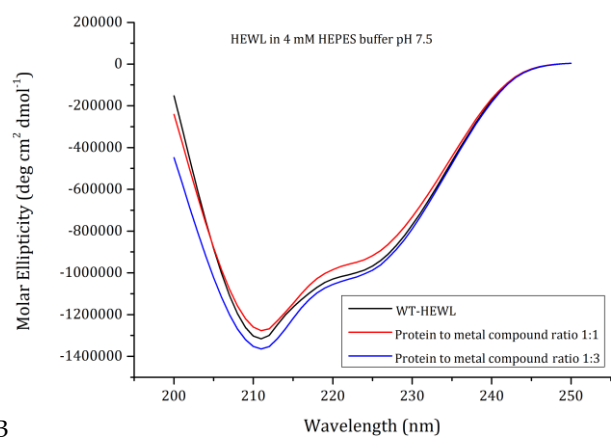


Figure S3. Details of Rh binding sites close to the side chains of Arg14 and His15 (**A**) and close to the C-terminal tail and the side chain of Lys13 (**B**) in Crystal 6. 2Fo-Fc electron density maps are contoured at 1.0 σ .



A



B

Figure S4. CD spectra of HEWL incubated for 24 h in the presence of $[\text{Rh}_2(\mu\text{-O}_2\text{CCH}_3)_4]$ at different protein to metal compound ratios in (A) 4 mM sodium acetate buffer pH 4.4 and (B) 4 mM HEPES buffer pH 7.5.

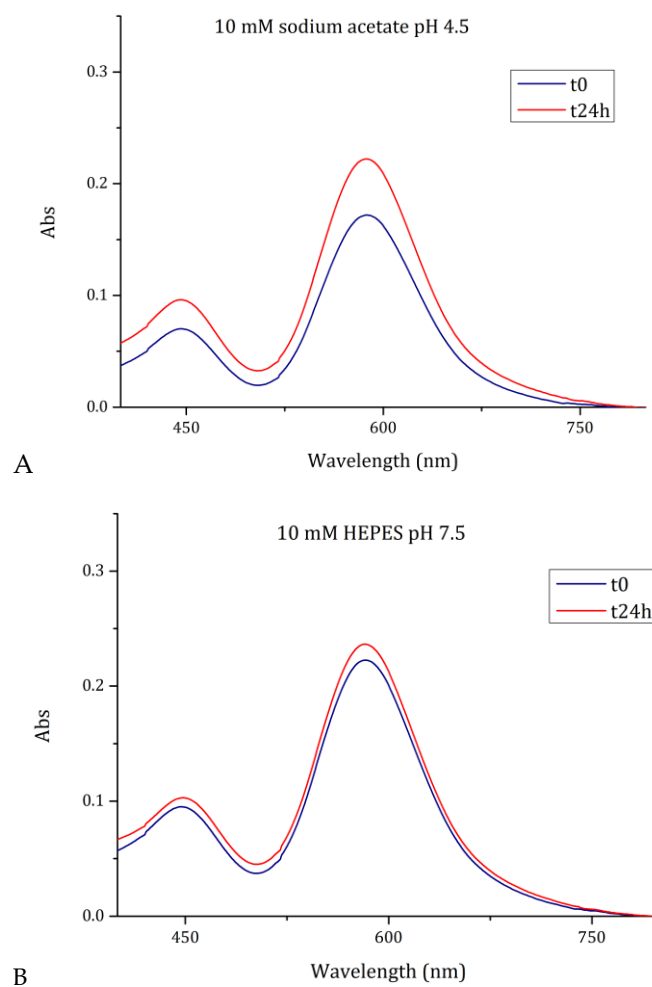


Figure S5. UV-Vis spectra of $[\text{Rh}_2(\mu\text{-O}_2\text{CCH}_3)_4]$ in (A) 10 mM sodium acetate buffer at pH 4.5 and (B) 10 mM HEPES pH 7.5.