

Figure S1. Effect of lucanthone on apoptosis in human renal carcinoma cells. Caki and ACHN cells were treated with 1-20 μ M lucanthone, and measured cell viability using XTT assay.

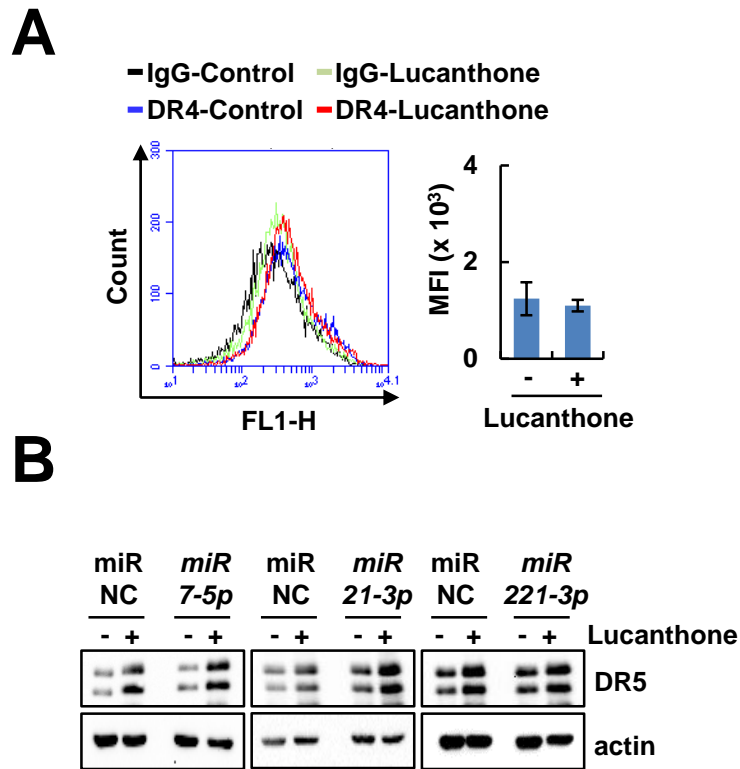


Figure S2. Effect of microRNA mimics on lucanthone-mediated DR5 upregulation. **(A)** Caki cells were treated with 5 μ M lucanthone for 24 h, and analyzed DR4 expression on the cell surface using flow cytometry. **(B)** Caki cells were transfected with various microRNA mimics (miR-negative control (NC), *miR*-7-5p, *miR*-21-3p, or *miR*-221-3p) and then treated with 5 μ M lucanthone for 24 h. The protein expression was measured by Western blotting. The values in graph **(A)** represent the mean \pm SD of three independent samples.