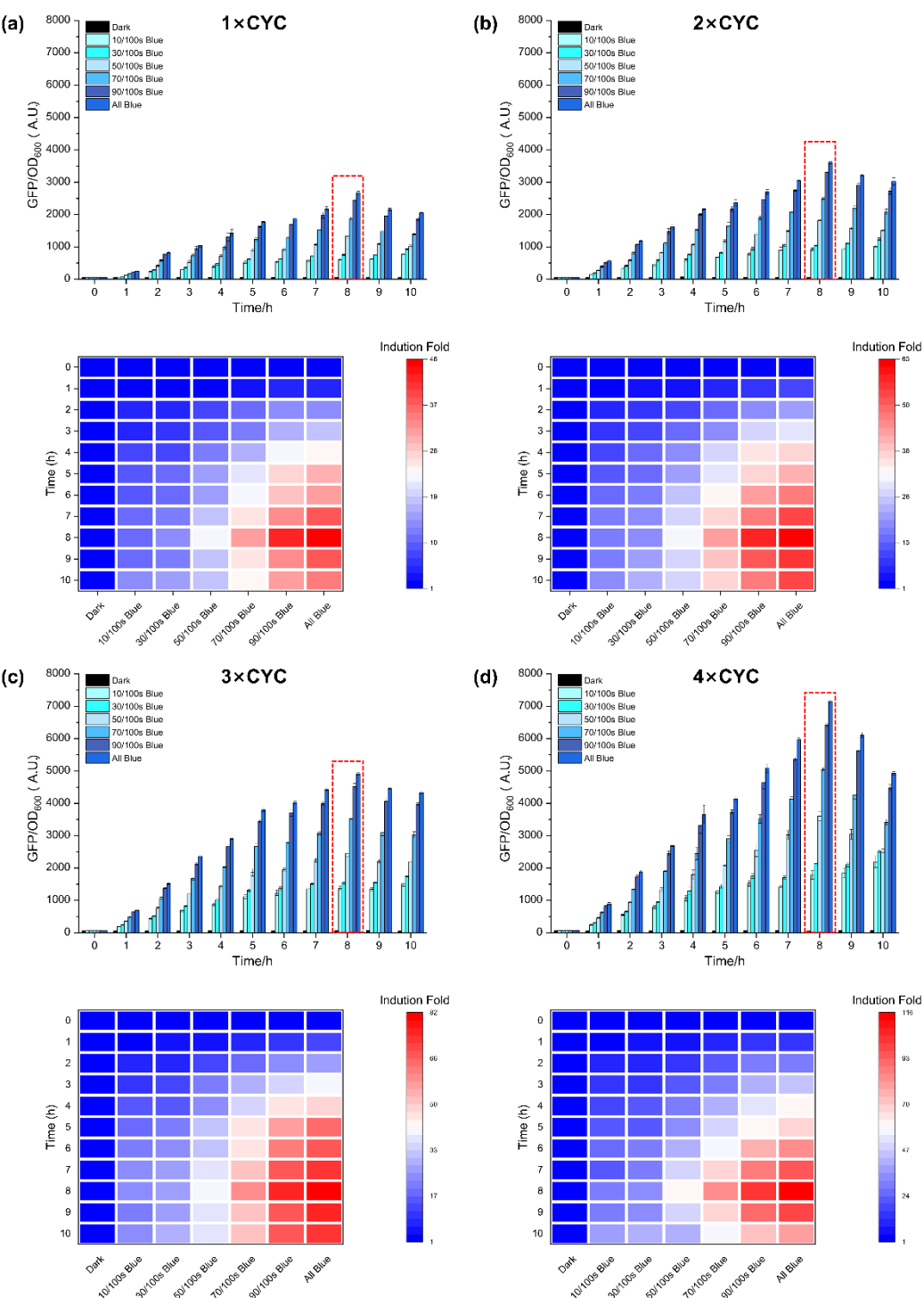


**Figure S1.** Responses of pYLBI systems with different core promoters to the time and dose of blue light irradiation. (a–c) Response effect of pYLBI system with different core promoter CYC<sub>102</sub>, GAP<sub>150</sub> or TEF<sub>136</sub>. (d) Comparison of maximum induction strength of pYLBI system with different core promoters.



**Figure S2.** Responses of pYLBI systems with different copy numbers of response fragments to time and dose of blue light irradiation. (a-d) Response effect of the pYLBI system containing 1 to 4 copies of the response fragment. The red dotted line outlines the highest induction fold.

**Table S1.** Core/Minimal promoter sequence.

Core Promoter	Sequence
minP <sub>64</sub>	AGACACTAGAGGGTATATAATGGAAGCTCGACTTCCAGCTTGG- CAATCCGGTACTGTTGGTAAA

---

	GTACAATCTTGATCCGGAGCTTTTCTTTTTTTGCCGATTAA-
	GAATTAATTCGGTCGAAAAAA-
TRP <sub>148</sub>	GAAAAGGAGAGGGCCAAGAGGGAGGGCATTGGTGACTATTGAG
	CACGTGAGTATACGTGATTAAGCACACAAAGGCAGCTTGGAGT
	CTAGTACACTCTATATTTTTTTATGCCTCGGTAATGAT-
	TTTCATTTTTTTTTTTCCAC-
HIS <sub>3188</sub>	CTAGCGGATGACTCTTTTTTTTTCTTAGCGATTGGCATTATCACAT
	AATGAATTATACATTATATAAAGTAATGTGATTTCTTCGAAGAA-
	TATACTAAAAAATGAGCAGGCAAGATAAACGAAGGCAAAG
	GCATGTGCTCTGTATGTATATAAAACTCTT-
	GTTTTCTTCTTTTCTCTAAA-
CYC <sub>102</sub>	TATTCTTTCCTTATACATTAGGACCTTTCAGCATAAATTACTATA
	CTTCTA
	ATAATAGCGGGCGGACGCATGTCATGAGATTATTGGAAACCAC-
	CAGAATCGAA-
GAP <sub>150</sub>	TATAAAAGGCGAACACCTTTCCCAATTTTGGTTTCTCCTGACCCA
	AAGACTTTAAATTTAATTTATTTGTCCCTATTTCAATCAATT-
	GAACAACAT
	TTGTGGTTGGGACTTTAGCCAAGGGTATAAAAGACCAC-
	CGTCCCGAATTAC-
TEF <sub>136</sub>	CTTTCCTCTTCTTTTCTCTCTCTCCTTGTCAACTCACACCCGAAATC
	GTAAAGCATTTCCTTCTGAGTATAAGAATCATTCAA

---