

Supplementary Information

Long Non-Coding RNA *MIR31HG* Promotes the Transforming Growth Factor β -Induced Epithelial-Mesenchymal Transition in Pancreatic Ductal Adenocarcinoma Cells

Ching-Chung Ko^{1,2,3}, Yao-Yu Hsieh^{4,5} and Pei-Ming Yang^{6,7,8,9,10,*}

¹ Department of Medical Imaging, Chi Mei Medical Center, Tainan 71004, Taiwan; kocc0729@gmail.com

² Department of Health and Nutrition, Chia Nan University of Pharmacy and Science, Tainan 71710, Taiwan

³ Institute of Biomedical Sciences, National Sun Yat-Sen University, Kaohsiung 80424, Taiwan

⁴ Division of Hematology and Oncology, Taipei Medical University Shuang Ho Hospital, New Taipei City 23561, Taiwan; alecto39@gmail.com

⁵ Division of Hematology and Oncology, Department of Internal Medicine, School of Medicine, College of Medicine, Taipei Medical University, Taipei 11031, Taiwan

⁶ Graduate Institute of Cancer Biology and Drug Discovery, College of Medical Science and Technology, Taipei Medical University, Taipei 11031, Taiwan; yangpm@tmu.edu.tw

⁷ PhD Program for Cancer Molecular Biology and Drug Discovery, College of Medical Science and Technology, Taipei Medical University and Academia Sinica, Taipei 11031, Taiwan

⁸ TMU Research Center of Cancer Translational Medicine, Taipei 11031, Taiwan

⁹ Cancer Center, Wan Fang Hospital, Taipei Medical University, Taipei 11696, Taiwan

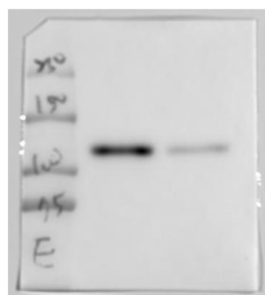
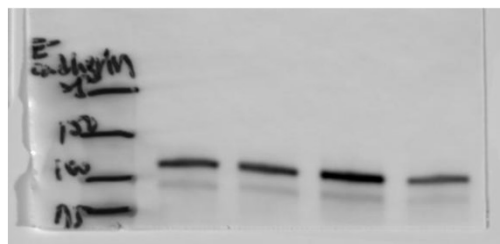
¹⁰ Taipei Medical University (TMU) and Affiliated Hospitals Pancreatic Cancer Groups, Taipei Cancer Center, Taipei Medical University, Taipei 11031, Taiwan

* Correspondence: yangpm@tmu.edu.tw; Tel.: +886-2-2697-2035 (ext.143)

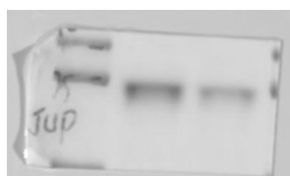
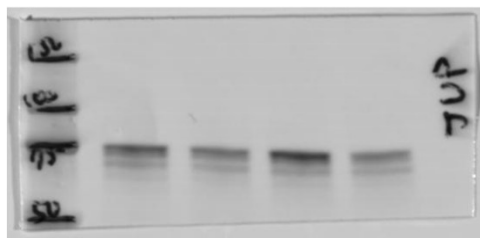
Supplementary Information includes:

Figure S1: The uncropped images of the Western blots.

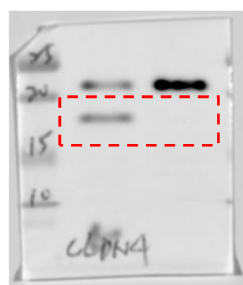
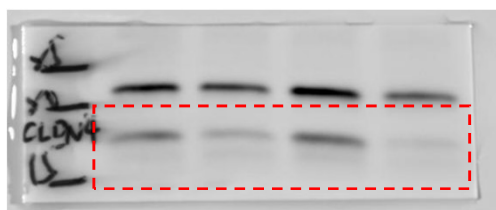
Full unedited blot for Figure 3C



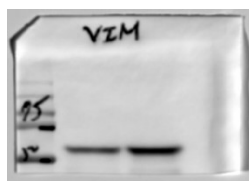
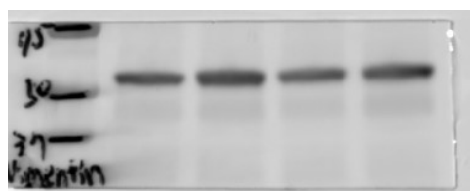
E-cadherin (CDH1)



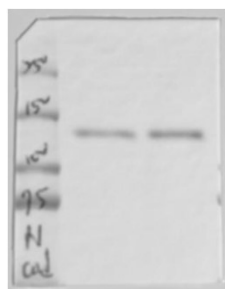
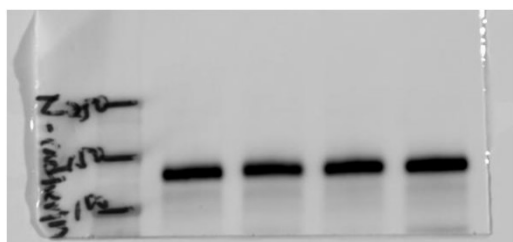
Plakoglobin (JUP)



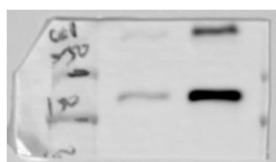
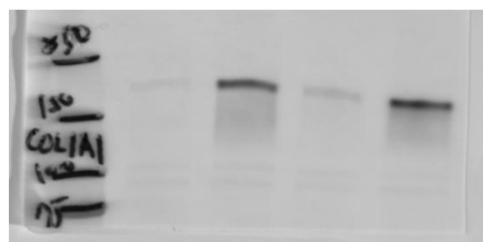
Claudin 4 (CLDN4)



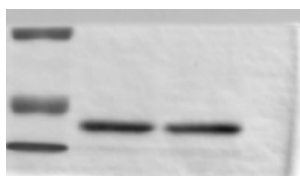
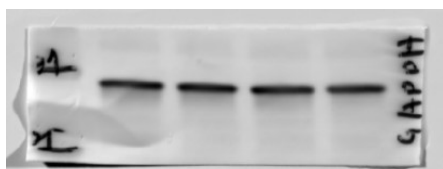
Vimentin (VIM)



N-cadherin (CDH2)



Collagen 1A1 (COL1A1)

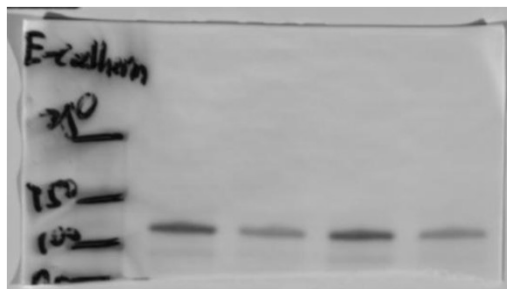


GAPDH

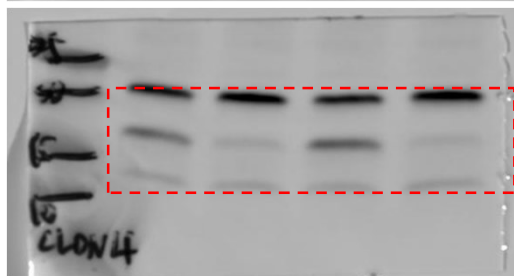
Full unedited blot for Figure 4C



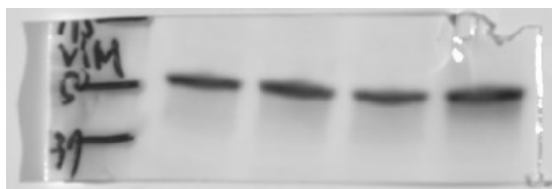
Full unedited blot for Figure 4F



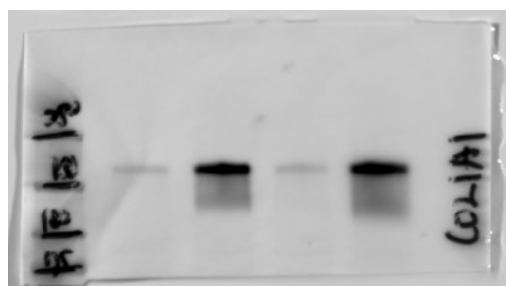
E-cadherin (CDH1)



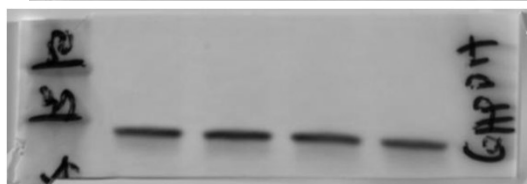
Claudin 4 (CLDN4)



Vimentin (VIM)



Collagen 1A1 (COL1A1)



GAPDH