

Figure S1. Metabolite identification and profiling. Chromatographic separation of compound **7i** and its major metabolite (panel A) obtained from human liver microsomes after 1h incubation. Base peak of the demethylated compound **7i-deMe** (panel B) ($m/z = 303.12521$) and of the compound **7i** (panel C) ($m/z = 317.14086$). Mass spectra validation (panel D) and characteristics of the compounds (panel E).

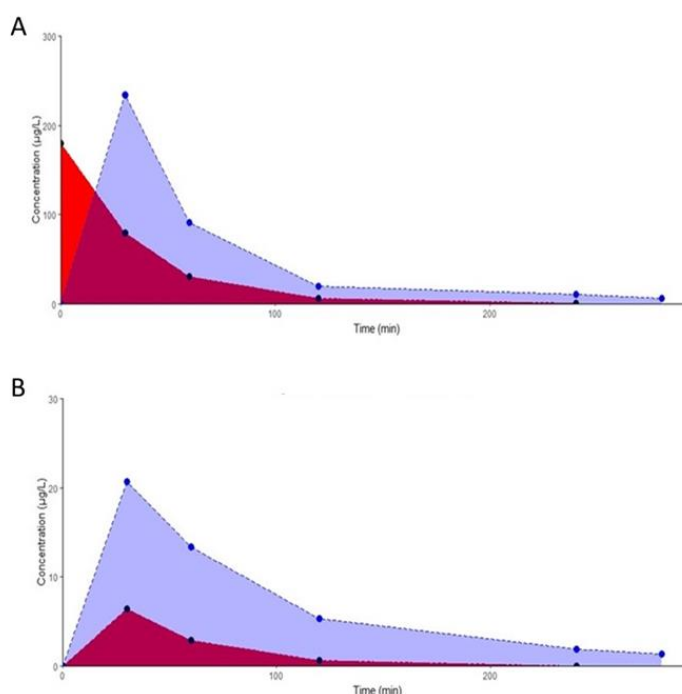


Figure S2. Compound **7i** kinetics after i.v (panel A) and p.o (panel B) administration. Compound **7i** was administrated at 1mg/kg. Analyses were performed in plasma (red) and brain homogenates (blue). Data are presented as median of $n=3$ mice per time-point. Simulations were performed to define time 0 to 30 min evolution.

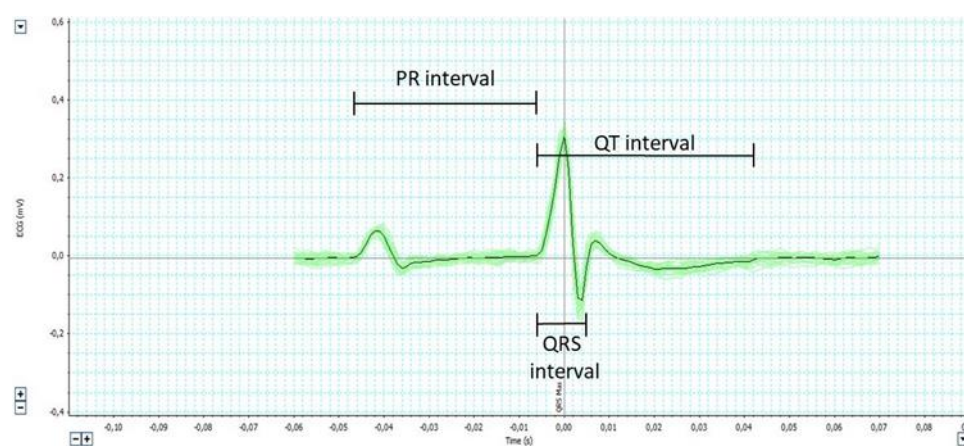


Figure S3. Normal ECG trace for single cardiac cycle. The PR interval represents the period extending from the beginning of the P wave until the beginning of the QRS complex. The QRS interval represents depolarization. The QT interval represents the time between initial depolarization and final repolarization.