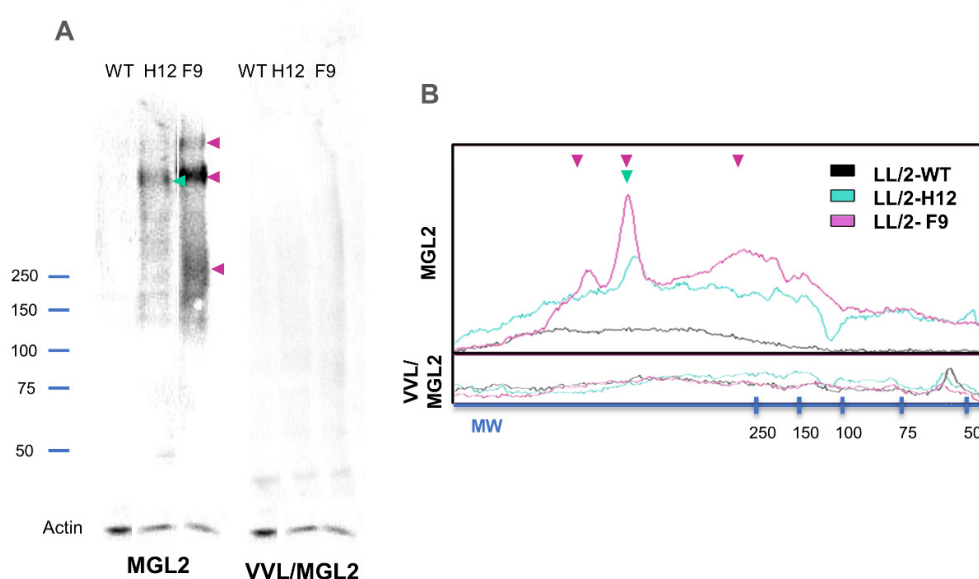


## Supplementary Material

### The Tn antigen confers distinctive immunomodulatory properties to lung tumor cells

**Table S1.** Plant lectin primary and secondary specificity to different glycan structures.

Lectin	Abbreviation	Primary specificity	Secondary specificity	Reference
<i>Vicia villosa</i> isolectine B4	VVL	Tn, $\alpha$ -GalNAc	$\beta$ -GalNAc	[51]
Jacalin	JAC	Gal $\beta$ (1-3)GalNAc, $\alpha$ -GalNAc	Core 3, sialyl-T	[52]
<i>Helix pomatia</i> agglutinin	HPA	$\alpha/ \beta$ -GalNAc		[53]
<i>Glycine max</i> agglutinin	SBA	$\alpha/\beta$ -GalNAc, Tn	Gal	[54]
<i>Dolichos biflorus</i> agglutinin	DBA	$\alpha$ -GalNAc, blood group A		[55]
<i>Maackia amurensis</i> II agglutinin	MAL II	NeuAca(2-3)Gal		[56]
<i>Sambucus Nigra</i> agglutinin	SNA	NeuAca(2-6)Gal	NeuAca(2-6)GalNAc, Lac	[57]



**Figure S1. VVL lectin inhibits MGL2 recognition of both LL/2 Tn<sup>+</sup> cells. (A,B)** MGL2 recognition of whole cell lysates by Western blotting. Membranes were pre-incubated with VVL and developed with MGL2-Fc. Green and violet arrows represent components recognized in LL/2-H12 and LL/2-F9 cells respectively. **(B)** Densitometry of Western blot bands after MGL2-Fc recognition, with or without pre-incubation with VVL.

### Supplementary References

51. Puri, K.D.; Gopalakrishnan, B.; Surolia, A. Carbohydrate binding specificity of the Tn-antigen binding lectin from *Vicia villosa* seeds (VVLB4). *FEBS Lett.* **1992**, *312*, 208–212.
52. Hagiwara, K.; Collet-Cassart, D.; Kobayashi, K.; Vaerman, J.P. Jacalin: isolation, characterization, and influence of various factors on its interaction with human IgA1, as assessed by precipitation and latex agglutination. *Mol. Immunol.* **1988**, *25*, 69–83.
53. Sanchez, J.-F.; Lescar, J.; Chazalet, V.; Audfray, A.; Gagnon, J.; Alvarez, R.; Breton, C.; Imberty, A.; Mitchell, E.P., Biochemical and Structural Analysis of Helix pomatia Agglutinin. *J. Biol. Chem.* **2006**, *281*, 20171–20180.
54. Dam, T.K.; Gerken, T.A.; Cavada, B.S.; Nascimento, K.S.; Moura, T.R.; Brewer, C.F. Binding Studies of  $\alpha$ -GalNAc-specific Lectins to the  $\alpha$ -GalNAc (Tn-antigen) Form of Porcine Submaxillary Mucin and Its Smaller Fragments. *J. Biol. Chem.* **2007**, *282*, 28256–28263.
55. Piller, V.; Piller, F.; Cartron, J.-P. Comparison of the carbohydrate-binding specificities of seven N-acetyl-D-galactosamine-recognizing lectins. *Eur. J. Biochem.* **1990**, *191*, 461–466.
56. Geisler, C.; DJarvis, L. Letter to the Glyco-Forum: Effective glycoanalysis with *Maackia amurensis* lectins requires a clear understanding of their binding specificities. *Glycobiology* **2011**, *21*, 988–993.
57. Shibuya, N.; Goldstein, I.J.; Broekaert, W.F.; Nsimba-Lubaki, M.; Peeters, B.; Peumans, W.J. The elderberry (*Sambucus nigra* L.) bark lectin recognizes the Neu5Ac( $\alpha$ 2-6)Gal/GalNAc sequence. *J. Biol. Chem.* **1987**, *262*, 1596–1601.