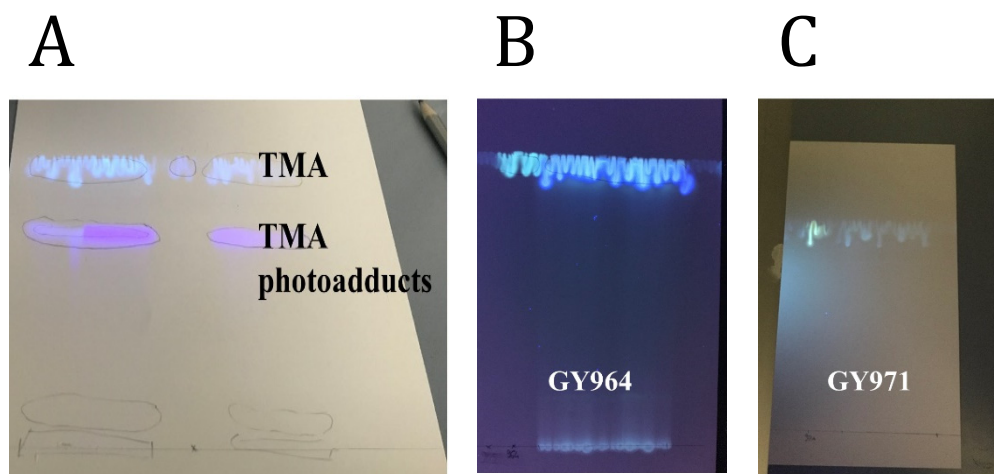
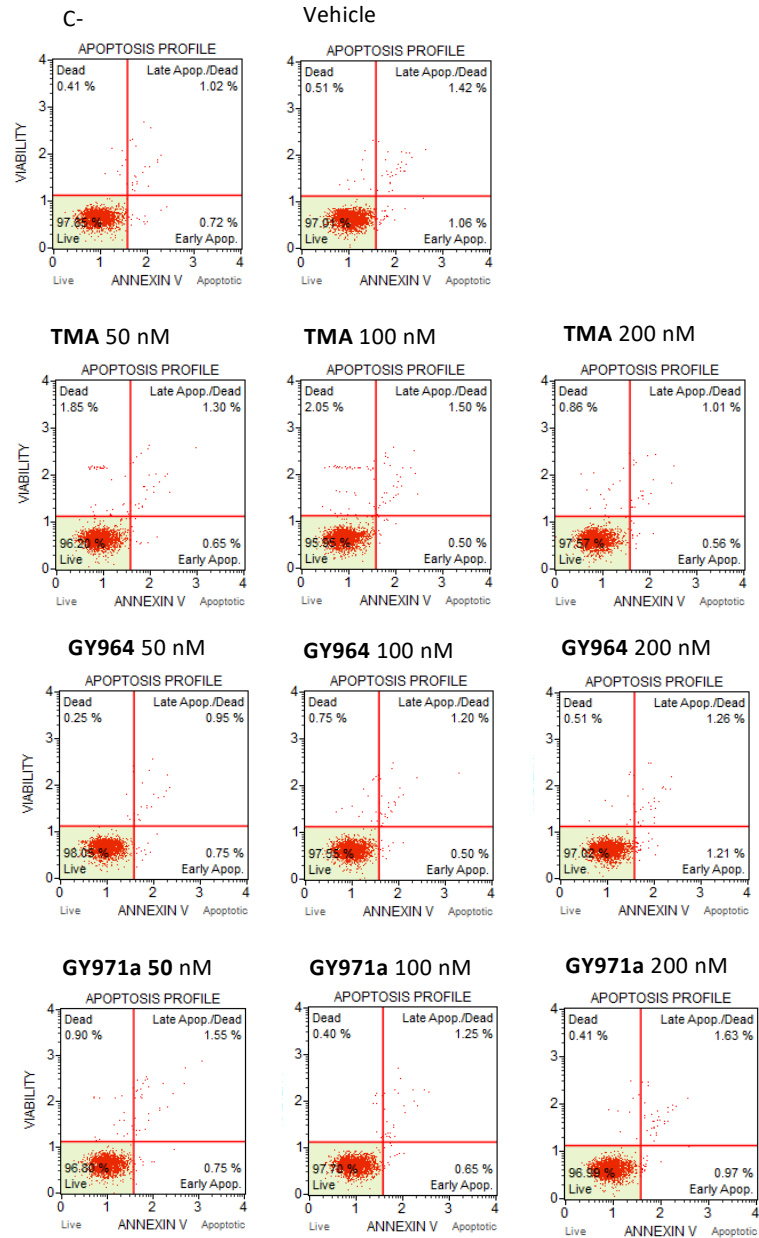


## Supplementary material



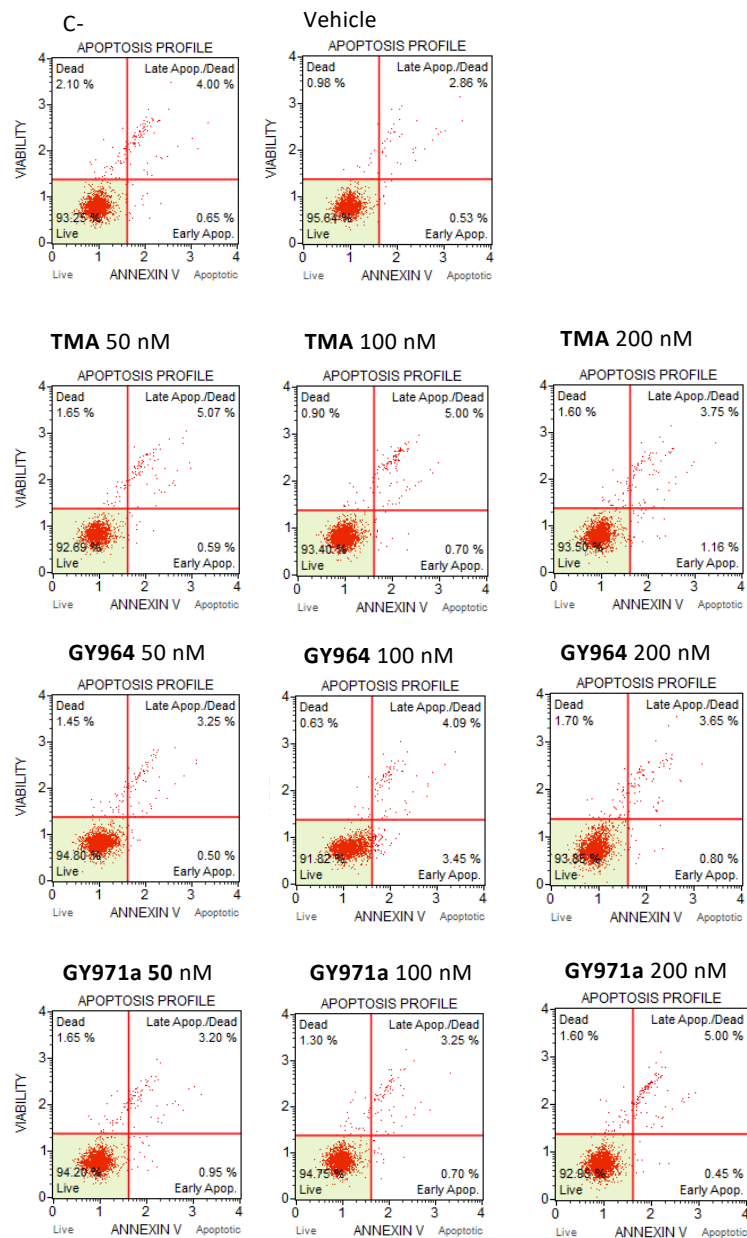
**Figure S1.** TLC of TMA (A), GY964 (B) and GY971 (C). Image analysis under UV irradiation to evaluate photoadduction (pictures extracted by Vaccarin, C.; Gabbia, D.; De Martin, S.; Franceschinis, E.; Roverso, M.; Bogialli, S.; Sacchetti, G.; Tupini, C.; **Lampronti, I.**; Gambari, G.; Cabrini, G.; Dehecchi, M.C.; Tamanini, A.; Marzaro, G.; Chilin, A. Improved Trimethylangelicin Analogues for Cystic Fibrosis: design, synthesis and preliminary screening, *Int J Mol Sci*, 2022 23, 115028).

## IB3-1 cells



**Figure S2.** Annexin V assay on IB3-1 cells untreated (C-) and treated with DMSO (Vehicle) and 50, 100, 200 nM TMA, GY964 and GY971a.

## CFBE41o- cells



**Figure S3.** Annexin V assay on CFBE41o- cells untreated (C-) and treated with DMSO (Vehicle) and 50, 100, 200 nM TMA, GY964 and GY971a.