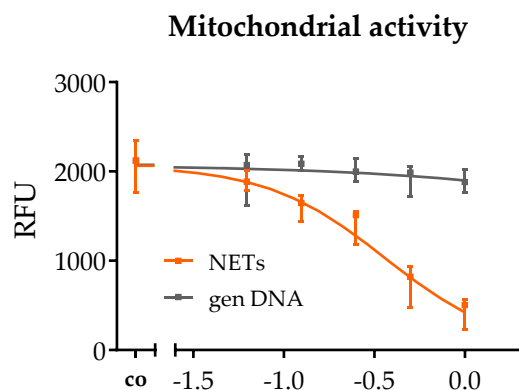
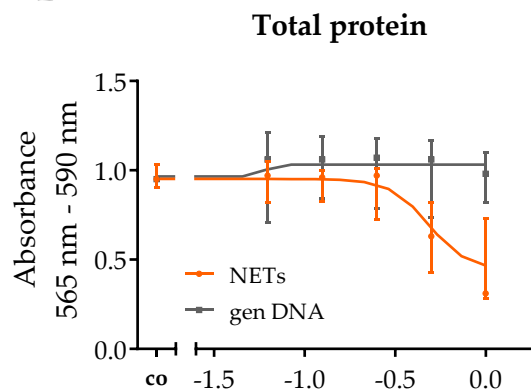
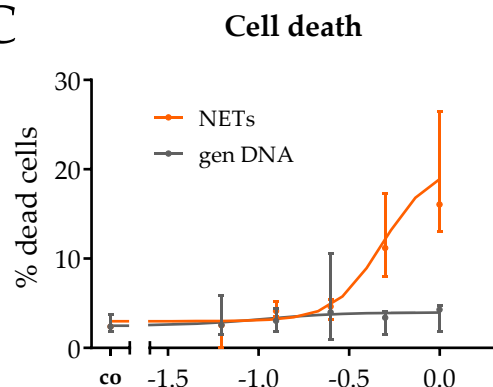
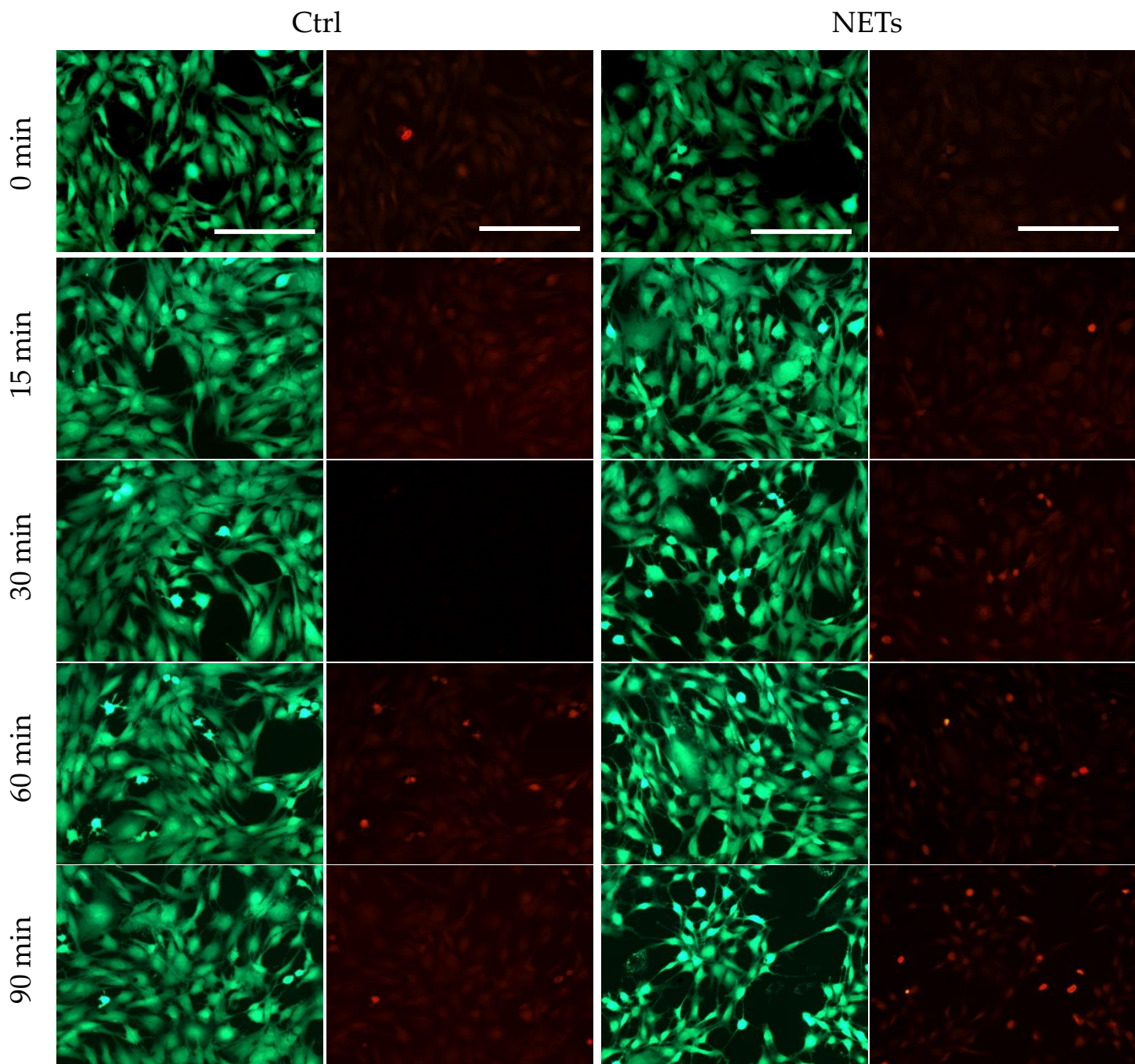


A**B****C**

Supplementary Figure S1: Calculation of EC50 values from **(A)** mitochondrial activity (resazurin conversion) values **(B)** total protein content (SRB staining) and **(C)** LDH release as indicator for cell death (in relation to lysed cells). Values were plotted against the log10 of NETs concentration in ng/ μ L and EC50 calculated with Graphpad Prism 8. N=3, n=3.

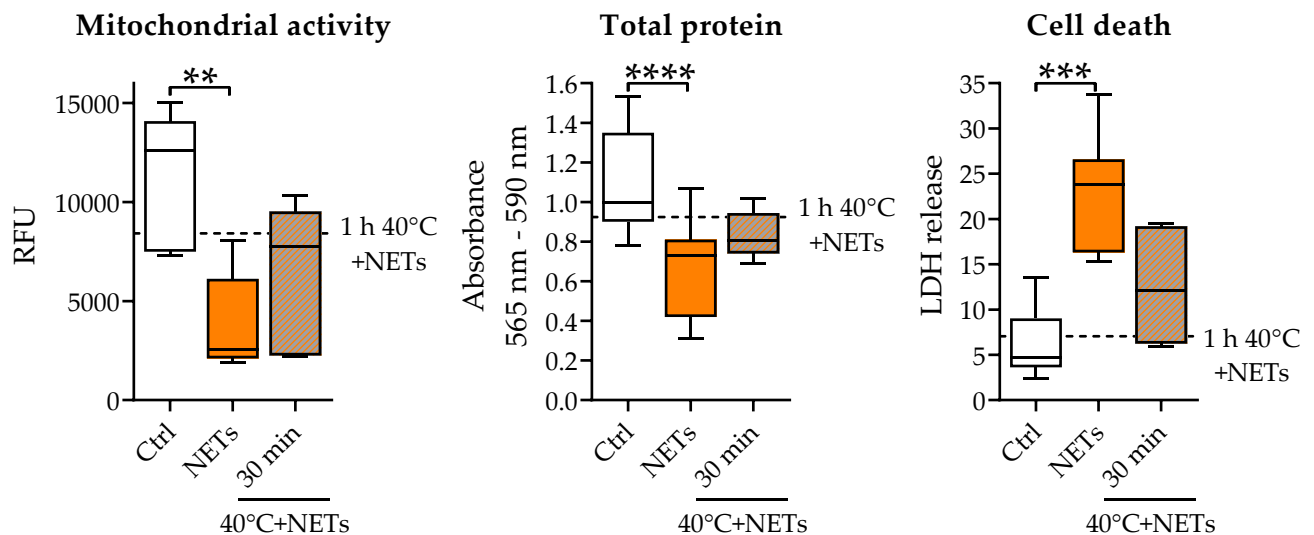


Supplementary Figure S2: Incubation of SCP-1 cells with NETs in PBS. SCP-1 cells were pre-incubated with Calcein AM for 1 h, washed twice with PBS and propidium iodide (and 0.5 ng/ μ L NETs) added. Microscopy was done at the indicated time points. Scale bar 200 μ m.

A

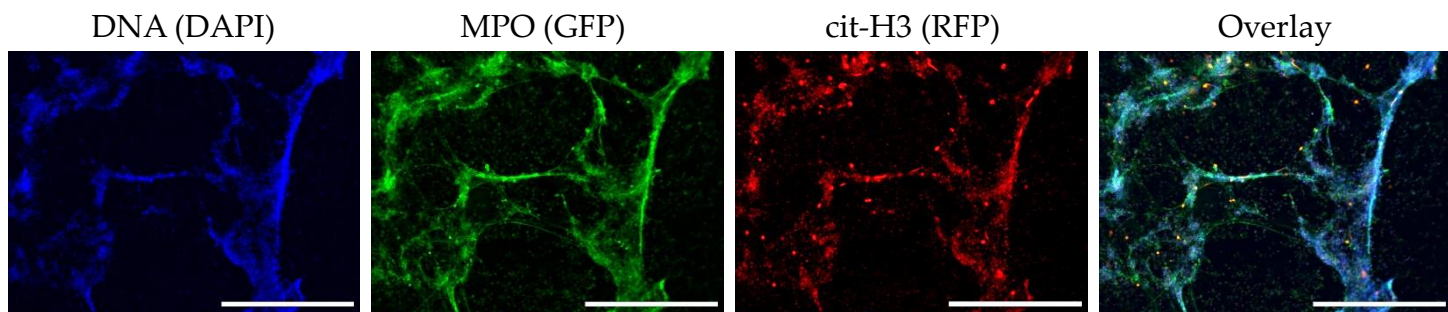
B

C

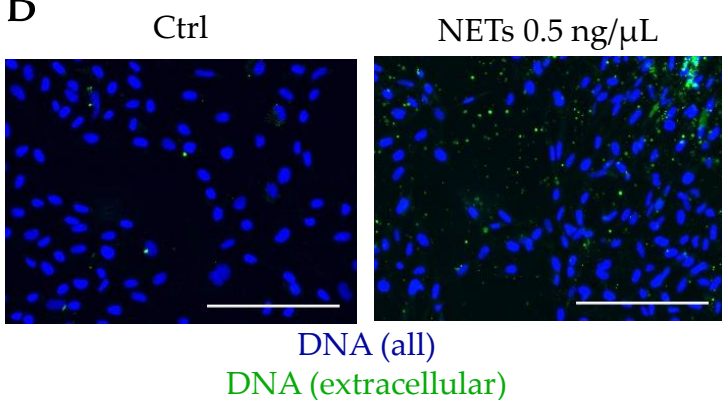


Supplementary Figure S3: Effect of 30 min denaturation of NETs at 40°C **(A)** mitochondrial activity (resazurin conversion) values **(B)** total protein content (SRB staining) and **(C)** percentage of dead cells (LDH release in relation to lysed cells). Dashed line indicates mean values of 1 h treatment at 40°C. ** $p < 0.01$, *** $p < 0.001$, **** $p < 0.0001$ as determined by the Kruskal-Wallis test. N=3, n=3.

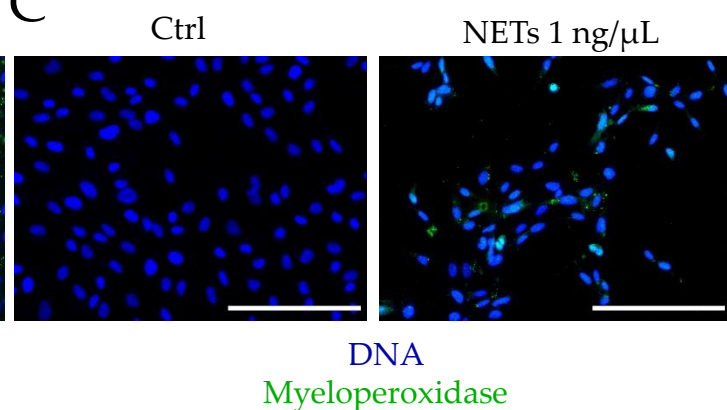
A



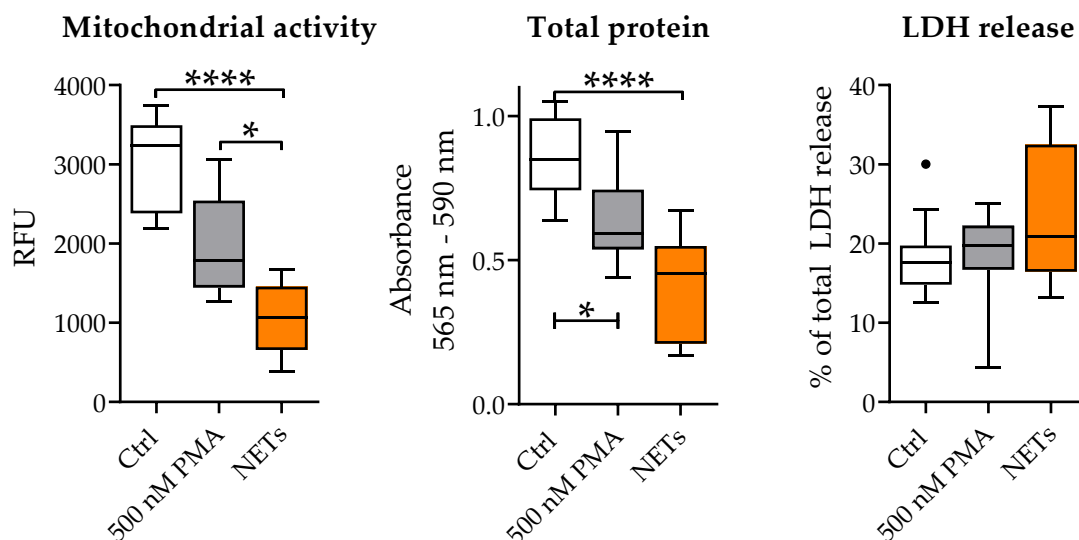
B



C



D



Supplementary Figure S4: Verification of NET formation and further analysis of NETs on MSCs (A) Neutrophils treated with 500 nM PMA for 4 h, fixed with 4% formaldehyde and stained for DNA (Hoechst 33342, blue) myeloperoxidase (green) and citrullinated histone 3 (red). Scale bar 400 μm. (B) SCP-1 cells (\pm 0.5 ng/μL NETs) were stained with 1 μM Hoechst and 1 μM Sytox Green (C) SCP-1 cells (\pm 0.5 ng/μL NETs) were fixed with 4% formaldehyde and stained for DNA (Hoechst 33342, blue) and myeloperoxidase (green). Antibodies: myeloperoxidase: 1:200, sc-52707, Santa Cruz Biotechnology; citrullinated histone 3: 1:100, #5103, Abcam (D) Effect of PMA on SCP-1 cells. SCP-1 cells were incubated with 500 nM PMA for 48 h and mitochondrial activity (resazurin conversion, left) total protein content (SRB staining, middle) and (C) LDH release (in relation to lysed cells, right) measured. N=3, n=4. * p <0.05, ** p <0.01, *** p <0.001, **** p <0.0001 as determined by the Kruskal-Wallis test.