

## Supplementary information

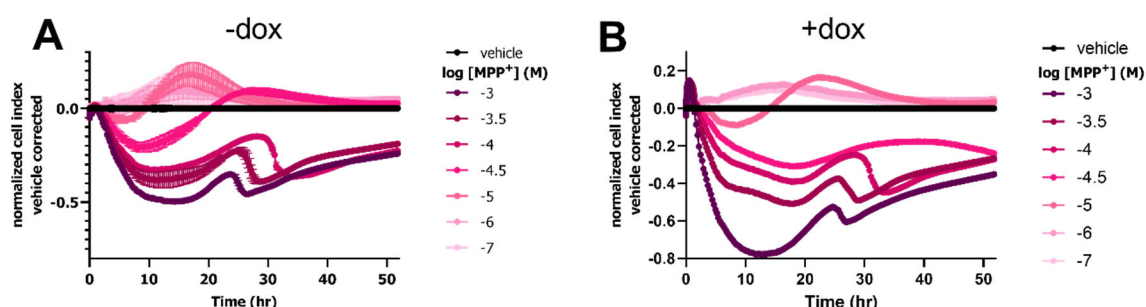
### MPP<sup>+</sup>-induced changes in cellular impedance as a measure for Organic Cation Transporter (SLC22A1-3) activity and inhibition

T.A.M. Mocking<sup>1</sup>, H.J. Sijben<sup>1</sup>, Y.W. Vermeulen<sup>1</sup>, A.P. IJzerman<sup>1</sup>, L.H. Heitman<sup>1,2,\*</sup>

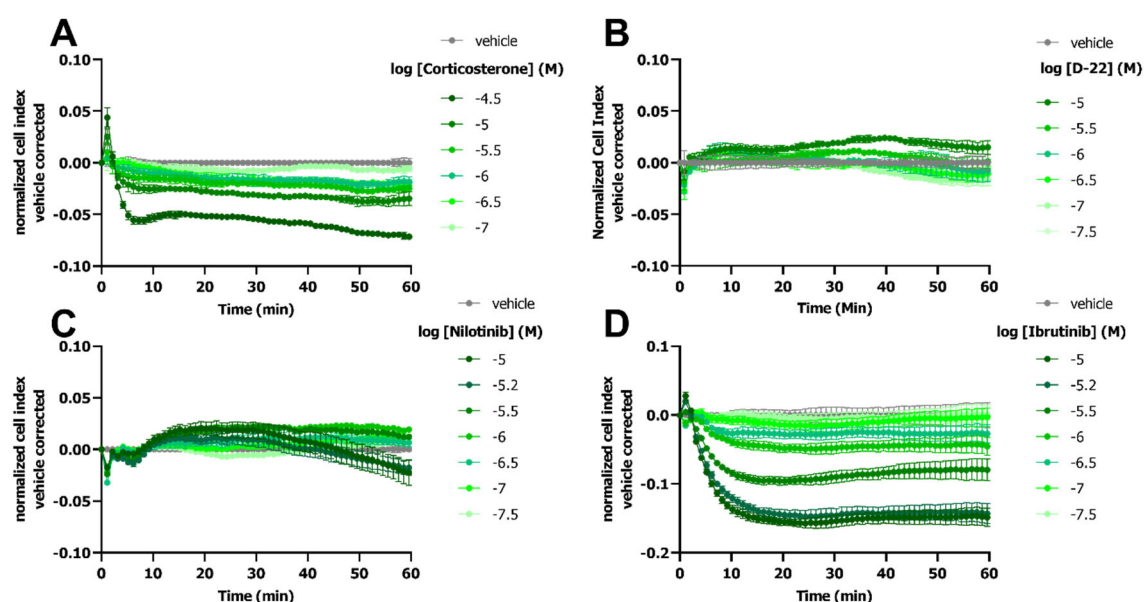
<sup>1</sup>Division of Drug Discovery and Safety, Leiden Academic Centre for Drug Research, Leiden University, the Netherlands.

<sup>2</sup>Oncode Institute, Leiden, The Netherlands.

\* corresponding author, l.h.heitman@lacdr.leidenuniv.nl



**Figure S1. Vehicle-corrected MPP<sup>+</sup> response on HEK293-JI-OCT3 cells.** Representative vehicle-corrected time-traces of MPP<sup>+</sup> response in absence (A) and presence (B) of dox-induced OCT3 expression as measured by the RTCA xCELLigence system for 52 hr. Data shown as mean  $\pm$  SD of a representative experiment of at least 3 experiments performed in duplicate.



**Figure S2. Inhibitor-induced cellular response in HEK293-JumpIn-OCT3 cells.** Representative vehicle-corrected time traces of cells pretreated with increasing concentrations of Corticosterone (A), Decynium-22 (D-22) (B), Nilotinib (C) or Ibrutinib (D). Data shown as mean  $\pm$  SD of a representative experiment of at least 3 experiments performed in duplicate.