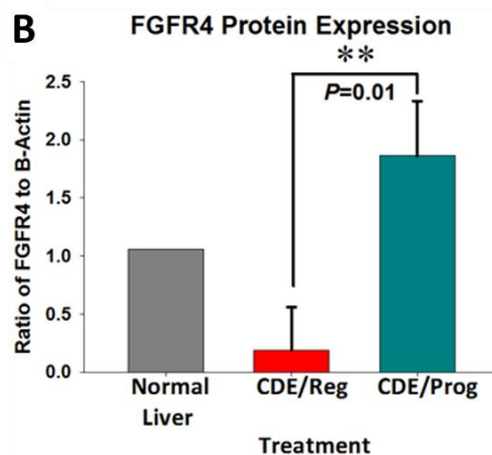
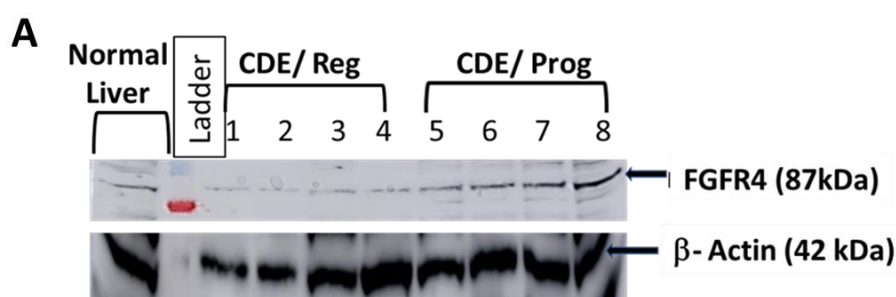


## Supplemental Materials

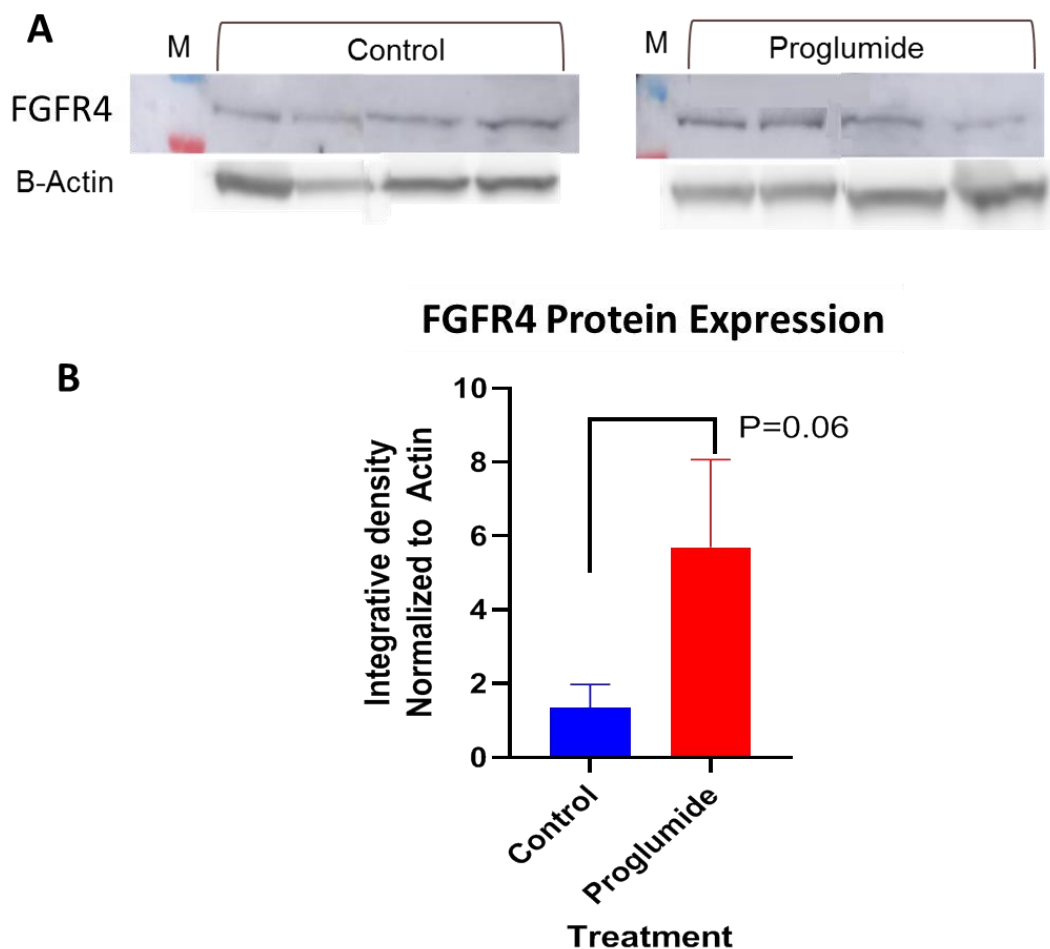
**Table S1.** PCR primers used to measure DEGs

Gene	Forward 5' - 3'	Reverse 5' - 3'
CK17	ACCCTCCCGAGATTACAACC	CAAGGCGTGTTCTGTCTCAA
Collagen 1 $\alpha$	CGCCATCAAGGTCTACTG	ACGGGAATCCATCGGTC
Collagen 4	GATGGGCTATCCTGGAACCACT	TCTCTCCTCGTTCGCCTTTGG
TGF $\beta$ R2	TTTCGGAAGAATACACCAC	GACACGGTAGCAGTAGAA



**Figure S1.** (A) FGFR4 protein expression by western blot is shown for NASH livers of mice on CDE/Reg diet and from livers of mice on CDE/Prog diet compared to mice on control diet (normal liver). Protein expression is normalized with  $\beta$ -actin. (B) Densitometry analysis of the western blot above for FGFR4 protein expression is analyzed and plotted as a ratio normalized to  $\beta$ -actin. FGFR4 expression is significantly increased in the mice on the CDE diet treated with proglumide compared to mice on the CDE diet with untreated water (\*\* $P=0.01$ ).

## Supplemental Materials



**Figure S2.** FGFR4 expression in the intestine of mice fed standard chow with or without proglumide in the drinking water. (A) Western blot of FGFR4 protein expression in Control mice on the left and in mice treated with proglumide on the right. (B) Densitometry analysis of western blot shows increased FGFR4 protein expression in the intestines of proglumide treated mice is 3-fold higher than controls ( $P=0.06$ ).