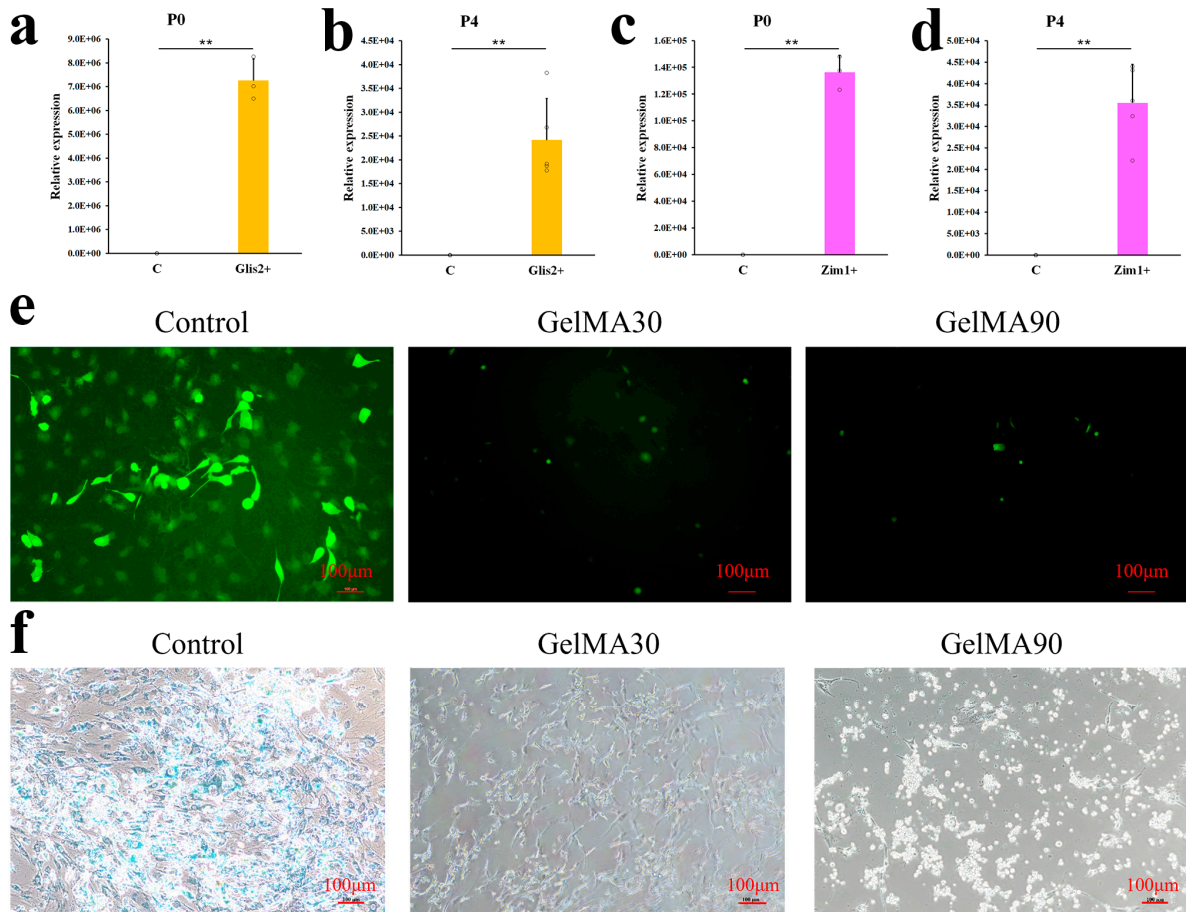


**Figure S1.** Cells isolated from total limb buds at postnatal days 2-3 (a), week 8 (b), and week 10 (c) were analyzed by flow cytometry. (d) Average PaS cells extraction of limb buds from different ages. \*\* $p < 0.01$ , Student's t test. Error bars indicate the standard error.



**Figure S2 Selection of gene and GelMA** (a-d) Changes in the expression levels of *Glis2*(a,b) and *Zim1*(c,d) after they were over-expressed during different cells passage (ac, P0, n = 3; bd, P4, n = 5). (e) ROS staining of PaS cells cultured on different GelMA. (f) The stain of senescence-association β-galactosidase

decreased as cells on GelMA30 or GelMA90.  $**p < 0.01$ . Error bars indicate the standard error.