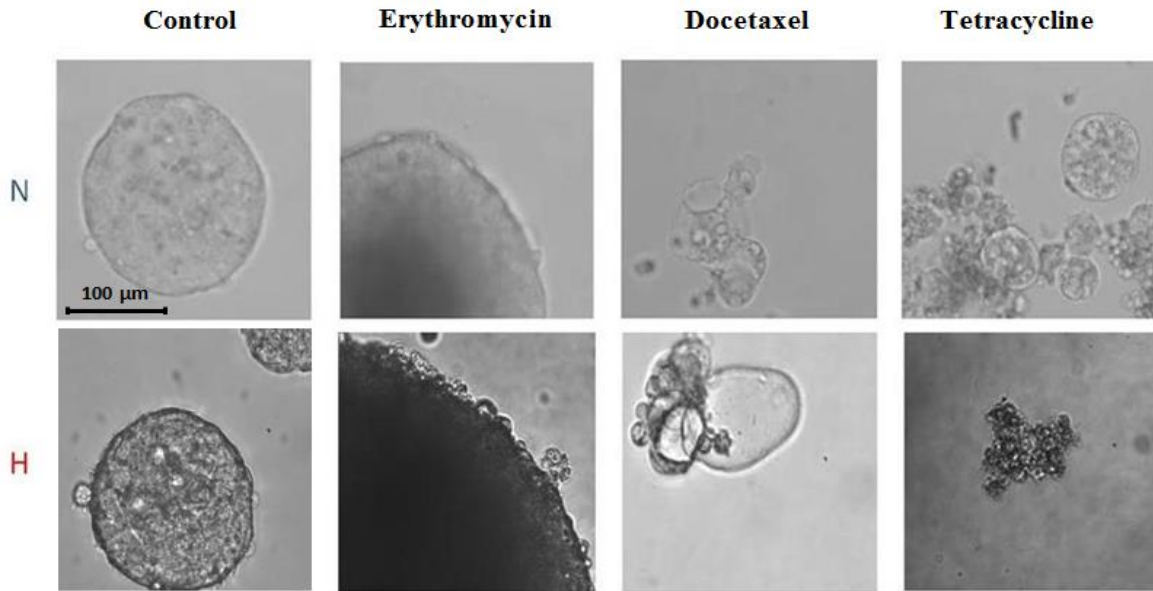


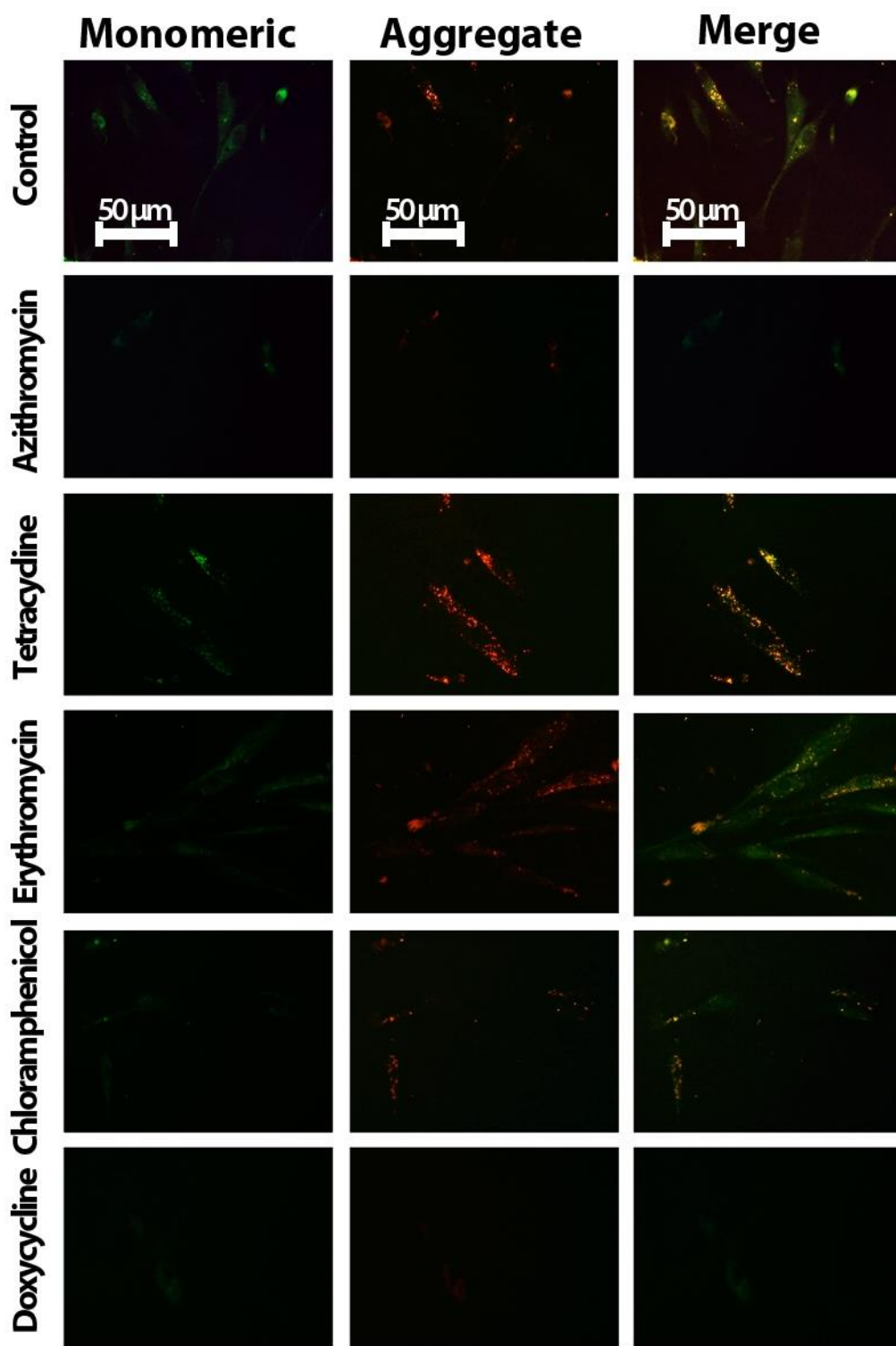
Supplementary Material

1 Supplementary Figures and Tables

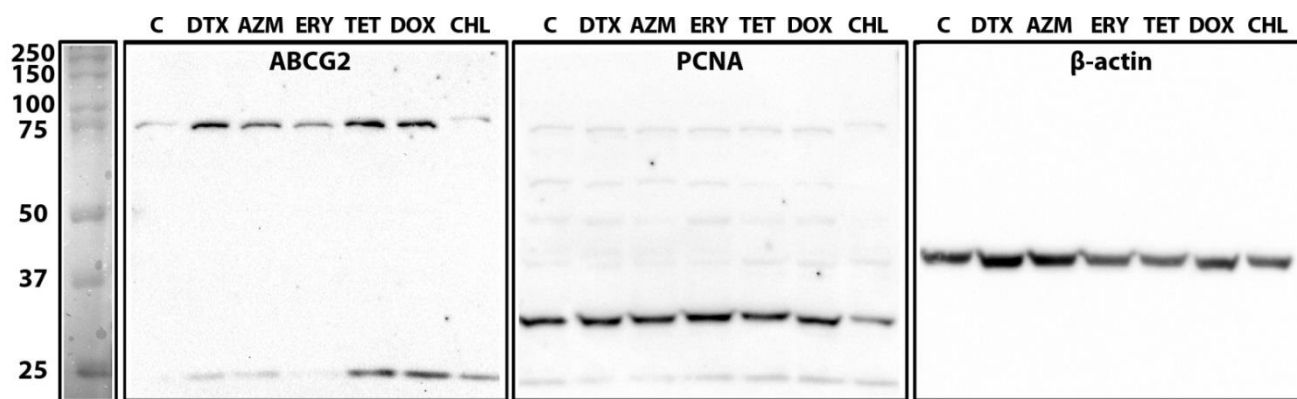
1.1 Supplementary Figures



Supplementary Figure S1. Changes in morphology, caused by antibiotics in: **N** – normoxia, **H** –hypoxia.



Supplementary Figure S2. JC-1 staining of mitochondrial network in Human Skin Fibroblasts after exposure to antibiotics; shift from red to green fluorescence represents depolarization of mitochondrial membrane potential; scale bar = 50 μ m.



Supplementary Figure S3. Mammospheres cell lysates were analyzed by western blot using antibodies against **ABCG2**, **PCNA** and **β-actin**. Representative whole blots of Figure 4A are shown: **C** – control sample, **DTX** – docetaxel, **AZM** – azithromycin, **ERY** – erythromycin, **TET** – tertacycline, **DOX** – doxycycline, **CHL** – chloramphenicol.