

## Supplementary Material

### Nanocellulose sponges containing antibacterial basil extract

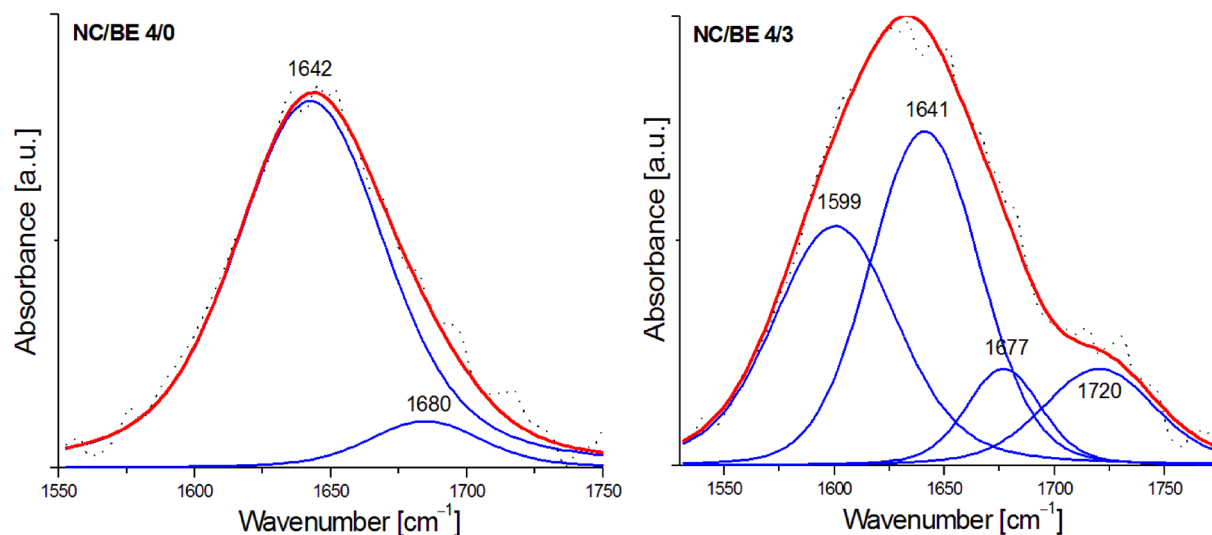
Gabriela Mădălina Oprică <sup>1</sup>, Denis Mihaela Panaitescu <sup>1,\*</sup>, Catalina Diana Usurelu <sup>1,2</sup>,  
George Mihai Vlăsceanu <sup>2</sup>, Paul Octavian Stanescu <sup>2</sup>, Brandusa Elena Lixandru <sup>3</sup>, Valentin Vasile <sup>3</sup>,  
Augusta Raluca Gabor <sup>1</sup>, Cristian-Andi Nicolae <sup>1</sup>, Marius Ghiurea <sup>1</sup> and Adriana Nicoleta Frone <sup>1,\*</sup>

<sup>1</sup> National Institute for Research and Development in Chemistry and Petrochemistry, 202 Spl. Independentei, 060021 Bucharest, Romania; madalina.oprica@icechim.ro (G.M.O.); catalina.usurelu@icechim.ro (C.D.U.); raluca.gabor@icechim.ro (A.R.G.); cristian.nicolae@icechim.ro (C.-A.N.); ghiurea@gmail.com (M.G.)

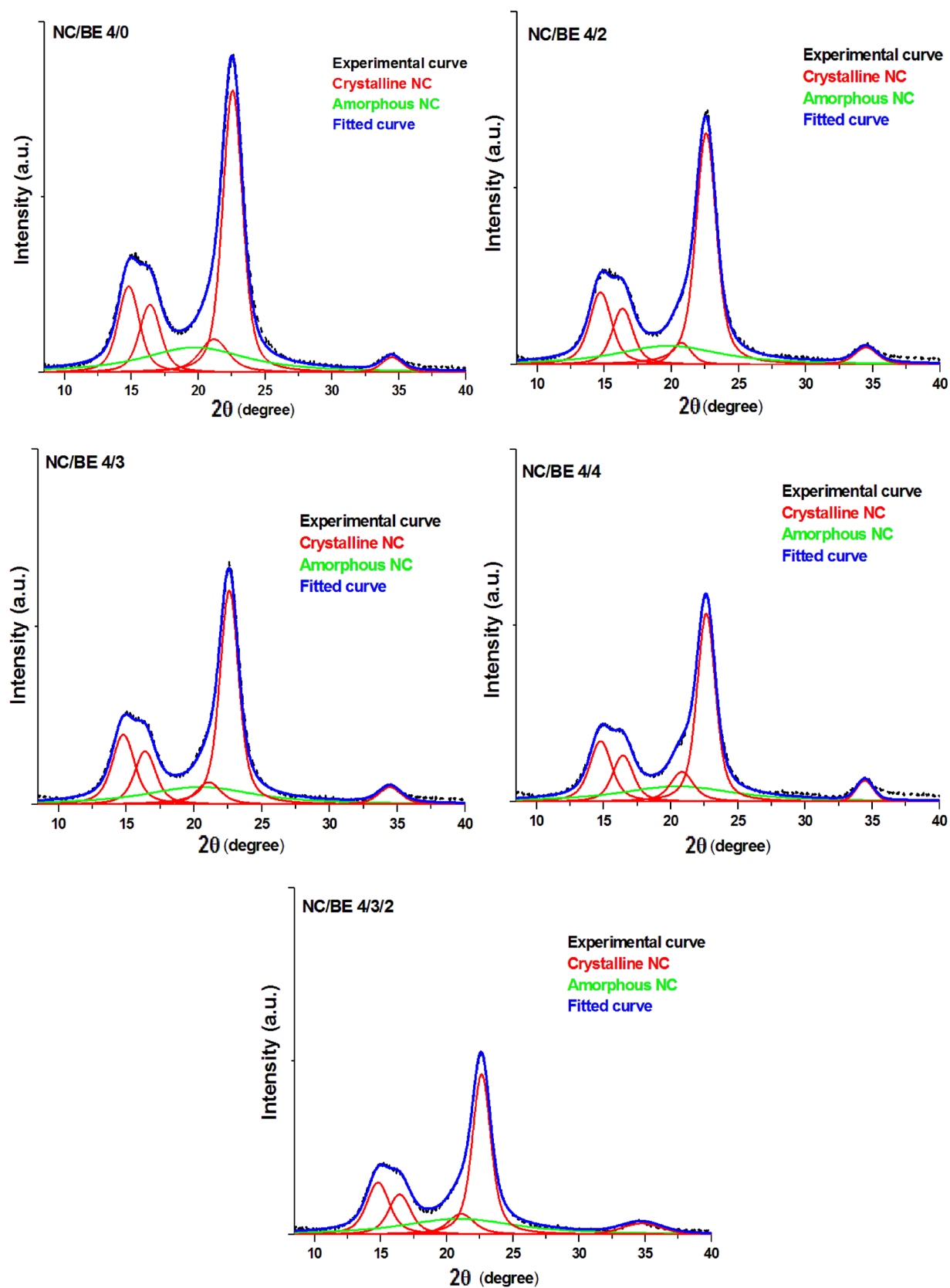
<sup>2</sup> Faculty of Chemical Engineering and Biotechnology, University Politehnica of Bucharest, 1-7 Gh. Polizu Street, 011061 Bucharest, Romania; george.vlasceanu@upb.ro (G.M.V.); paul.stanescu@upb.ro (P.O.S.)

<sup>3</sup> Cantacuzino National Medical-Military Institute for Research and Development, 103 Spl. Independentei, 050096 Bucharest, Romania; brandusa\_lixandru@yahoo.com (B.E.L.); vali909.g@gmail.com (V.V.)

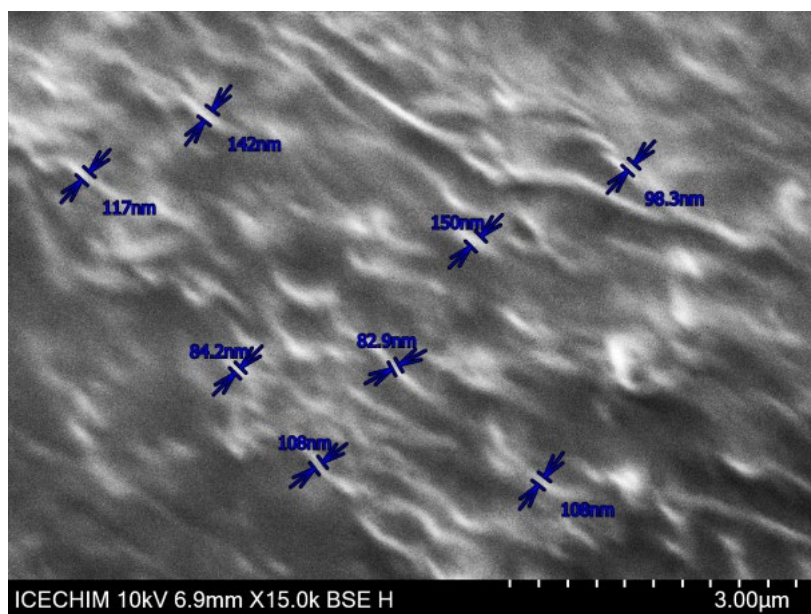
\* Correspondence: panaitescu@icechim.ro (D.M.P.); adriana.frone@icechim.ro (A.N.F.)



**Figure S1.** Deconvoluted FT-IR spectra of NC/BE 4/0 and NC/BE 4/3 in the region of 1750–1550  $\text{cm}^{-1}$



**Figure S2.** Deconvoluted XRD patterns for the NC sponges containing BE



**Figure S3.** SEM image of nanocellulose casted from water suspension