

Supplementary figures

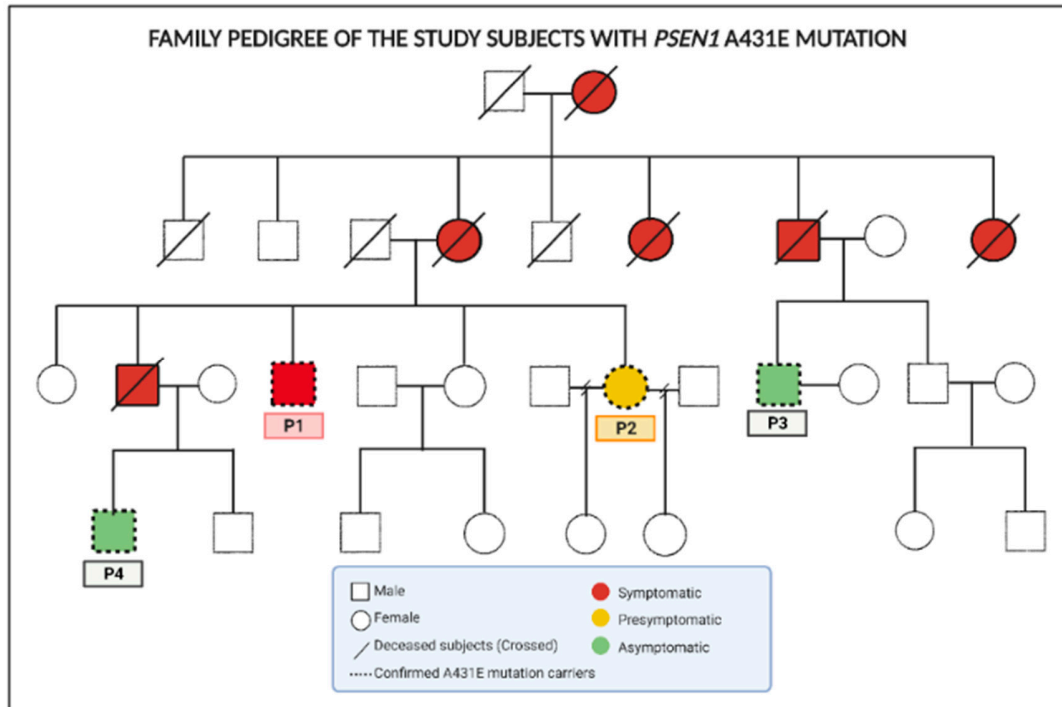


Figure S1. Family pedigree of the study subjects. Males are illustrated as squares and females as circles. Crossed figures depict deceased individuals. *PSEN1* (A431E) mutation carriers genetically verified are shown with a dotted line [33].

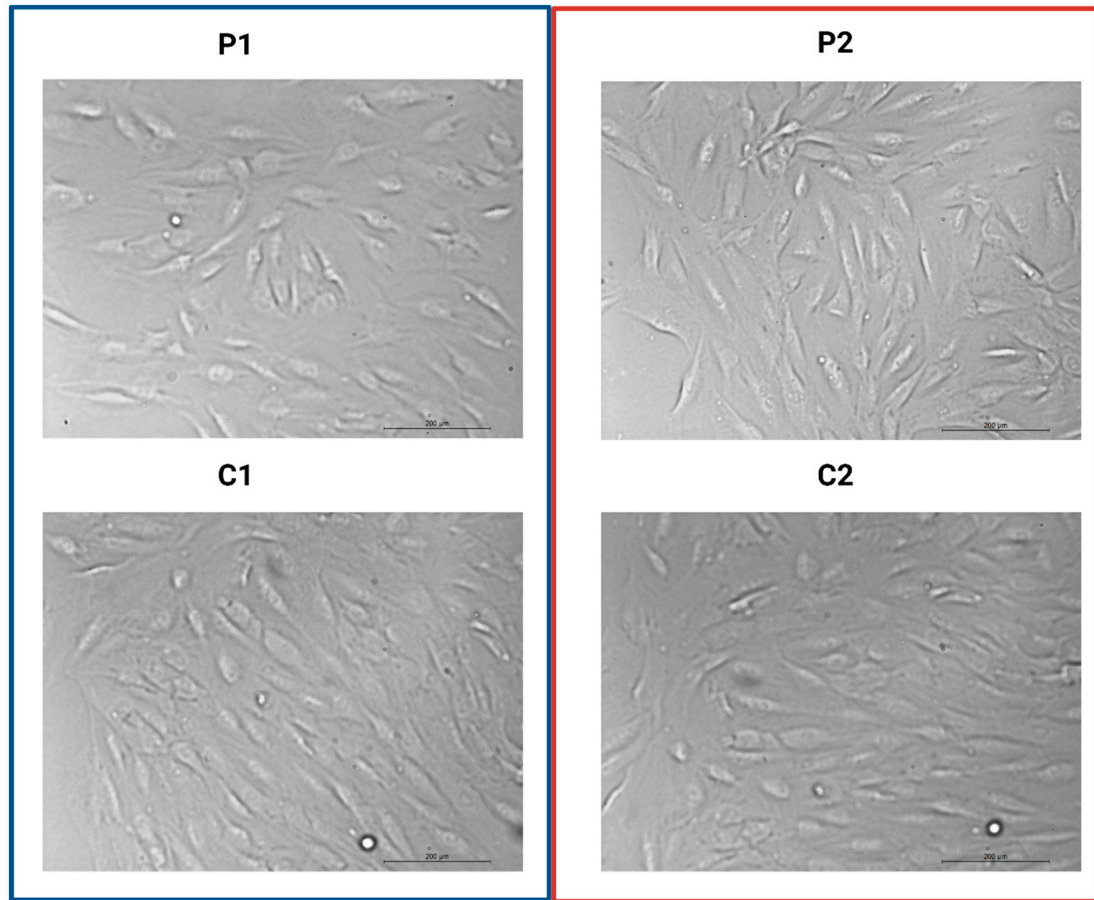


Figure S2. Cell morphology of study subjects. The left panel shows the cell morphology of P1 and C1, and the right panel shows the cell morphology of P2 and C2.

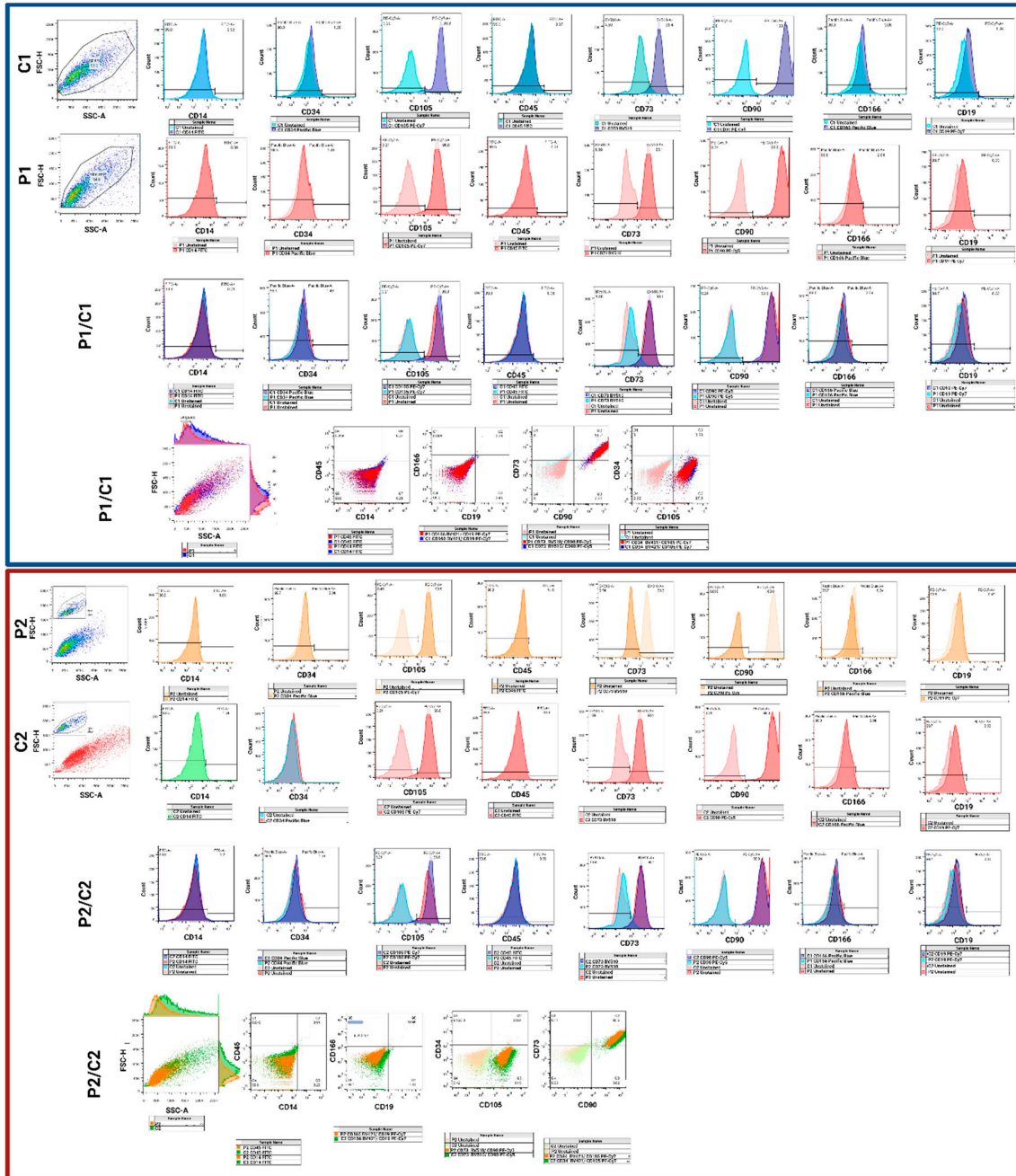


Figure S3. Histograms and dot plots of MSC markers. The blue square shows the histograms and dot plots of MSCs markers of P1 and C1 cells individually and merged. The red square shows histograms and dot plots of MSCs markers of P2 and C2 cells individually and merged. Cells were negative for hematological markers and differentiated cells CD34, CD45, CD14, CD19, and CD166 and positive for MSCs markers CD105, CD90, and CD73.