

Figure S1. Ubiquitin recruitment in PANC-1 cells. PANC-1 cells expressing Empty pEGFPN1 or pEGFPN1 VMP1, or non-transfected PANC-1 cells, were immunolabeled with anti-ubiquitin. Scale bars: 10 μ m.

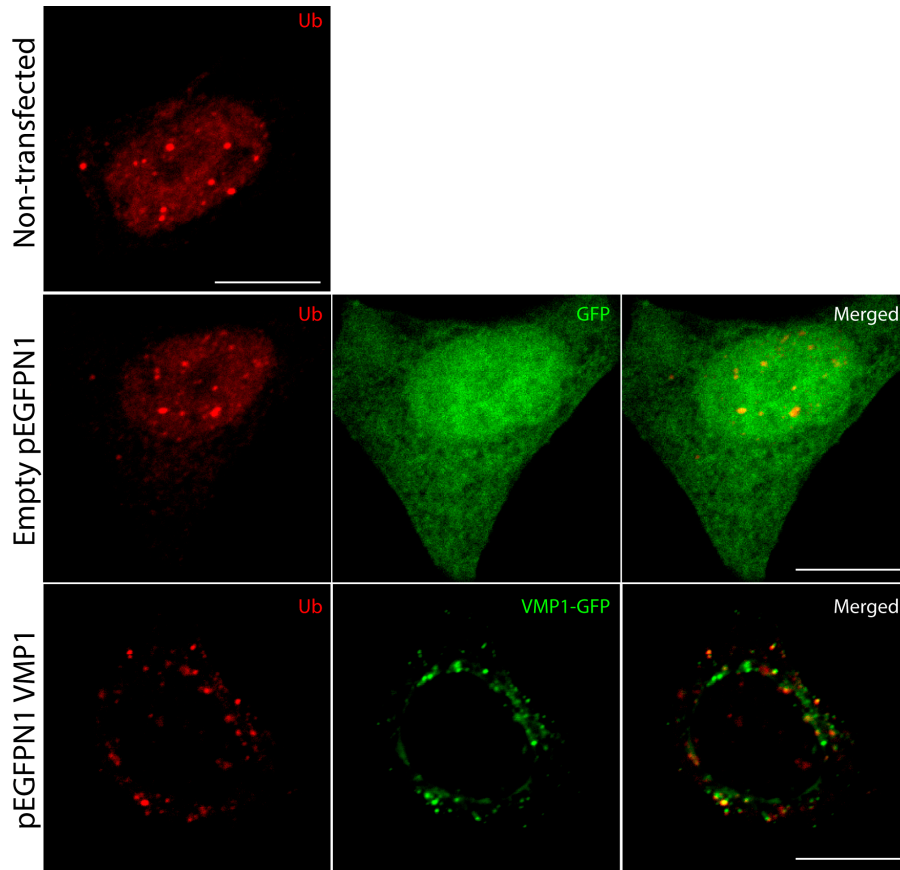


Figure S2. Ubiquitin recruitment in MCF-7 cells. MCF-7 cells expressing Empty pEGFPN1 or pEGFPN1 VMP1, or non-transfected MCF-7 cells, were immunolabeled with anti-ubiquitin. Scale bars: 10 μ m.

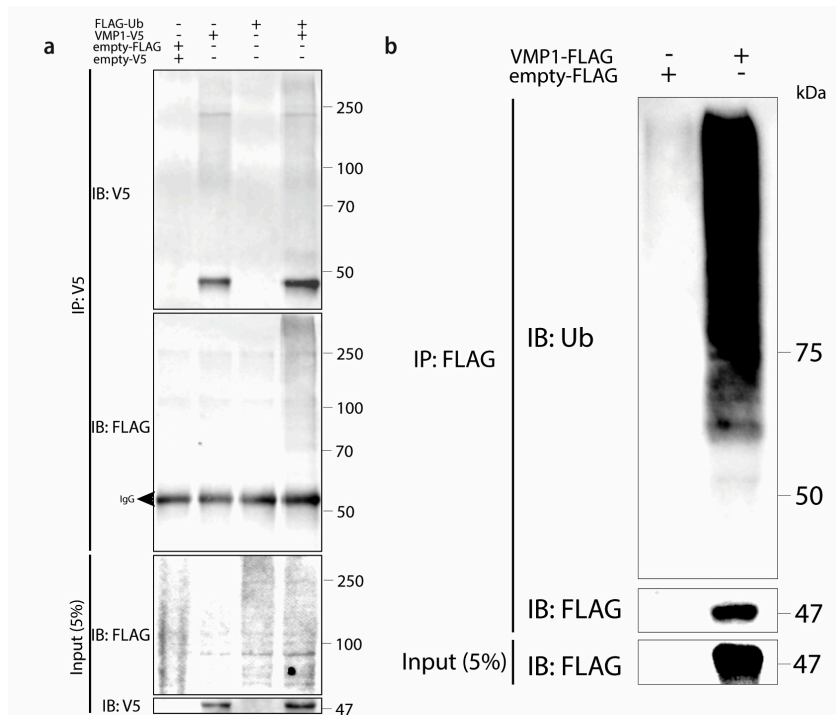


Figure S3. Immunoprecipitation of VMP1 and Ubiquitin. **a.** Lysates from HEK293T cells transfected with VMP1-V5, FLAG-Ub, and the combination of both were immunoprecipitated with anti-V5 magnetic beads and immunoblotted with anti-FLAG. Several bands over VMP1-V5's molecular weight (47.5 kDa) appeared in the eluate of co-transfected cells, indicating VMP1 ubiquitination. **b.** Lysates from HEK293T cells transfected with VMP1-FLAG were immunoprecipitated with anti-FLAG magnetic beads and immunoblotted with anti-Ub. Several bands over VMP1-FLAG's molecular weight (47 kDa) appeared in the eluate, indicating VMP1 ubiquitination.

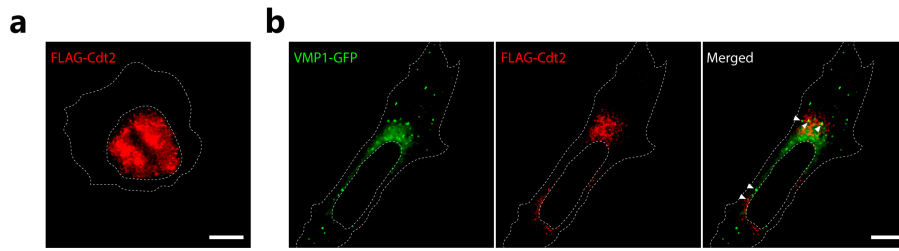


Figure S4. FLAG-Cdt2 translocation. (a) HeLa cells were transfected with FLAG-Cdt2 and immunolabeled with anti-FLAG. Scale Bar: 10 μ m. (b) HeLa cells were transfected with VMP1-GFP and FLAG-Cdt2 and immunolabeled with anti-FLAG. Scale Bar: 10 μ m. The images are representative of three independent experiments.