



Article

# Comparative Study of Cytotoxicity and Antioxidant, Anti-Aging and Antibacterial Properties of Unfermented and Fermented Extract of *Cornus mas* L.

Martyna Zagórska-Dziok <sup>1</sup>, Aleksandra Ziemlewska <sup>1</sup>, Agnieszka Mokrzyńska <sup>1</sup>, Zofia Nizioł-Łukaszewska <sup>1</sup>, Ireneusz Sowa <sup>2</sup>, Dariusz Szczepanek <sup>3</sup> and Magdalena Wójciak <sup>2,\*</sup>

<sup>1</sup> Department of Technology of Cosmetic and Pharmaceutical Products, Medical College, University of Information Technology and Management in Rzeszow, Sucharskiego 2, 35-225 Rzeszow, Poland; mzagorska@wsiz.edu.pl (M.Z.-D.); aziemlewska@wsiz.edu.pl (A.Z.); amokrzyńska@wsiz.edu.pl (A.M.); znizioł@wsiz.edu.pl (Z.N.-Ł.)

<sup>2</sup> Department of Analytical Chemistry, Medical University of Lublin, Aleje Raclawickie 1, 20-059 Lublin, Poland; i.sowa@umlub.pl

<sup>3</sup> Chair and Department of Neurosurgery and Pediatric Neurosurgery, Medical University of Lublin, Jaczewskiego 8, 20-090 Lublin, Poland; dariusz.szczepanek@umlub.pl

\* Correspondence: magdalena.wojciak@umlub.pl

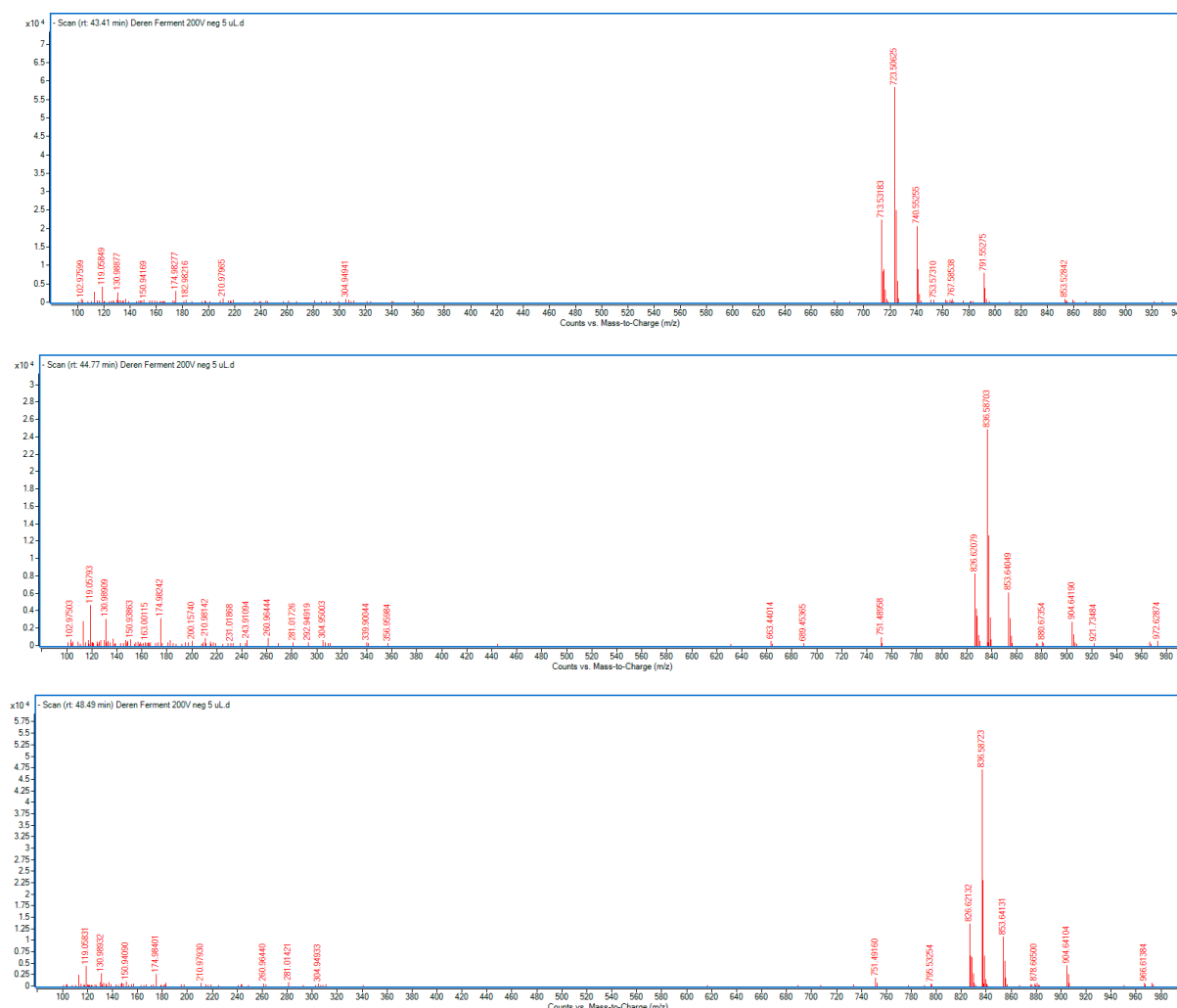
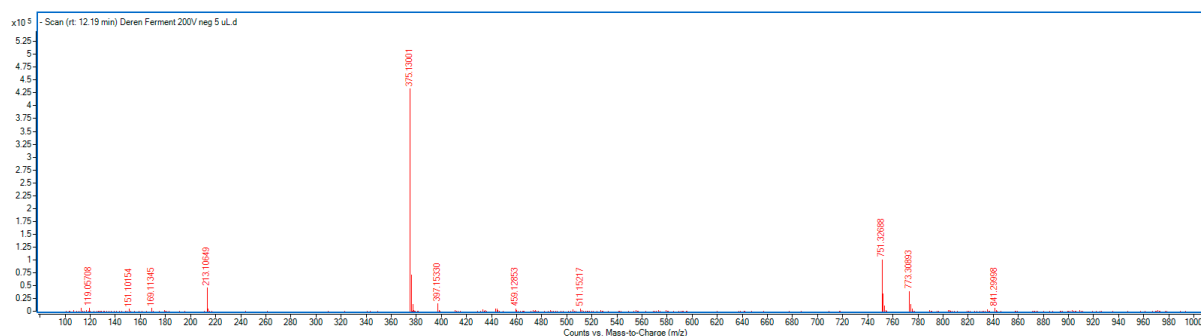
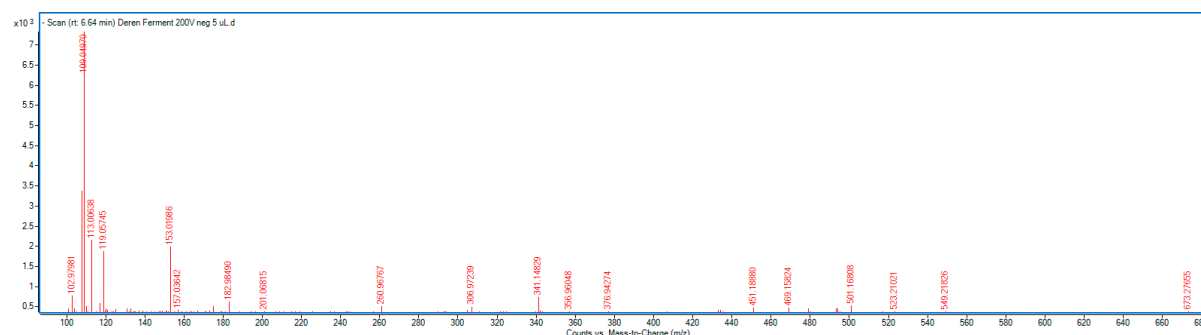
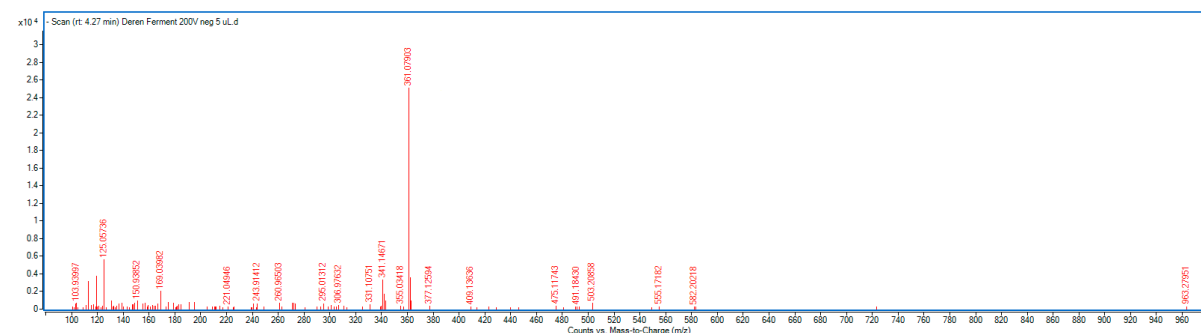
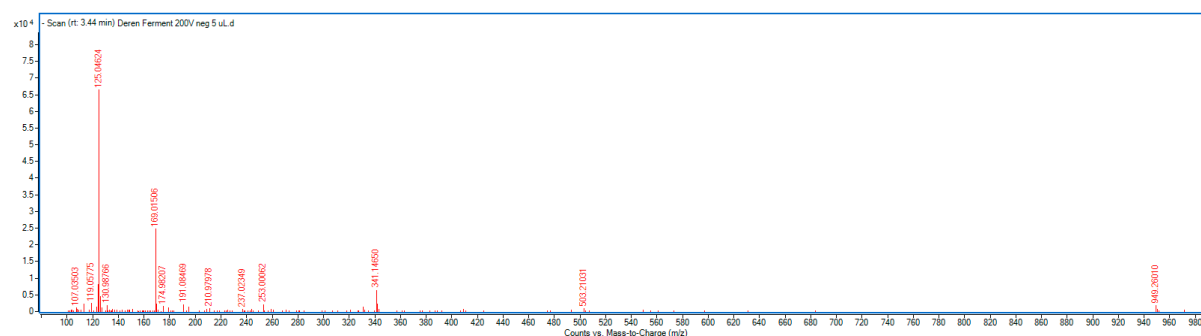
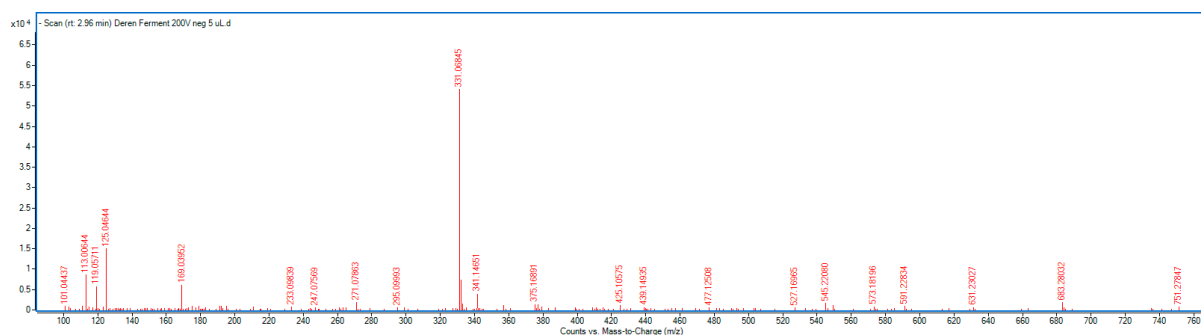
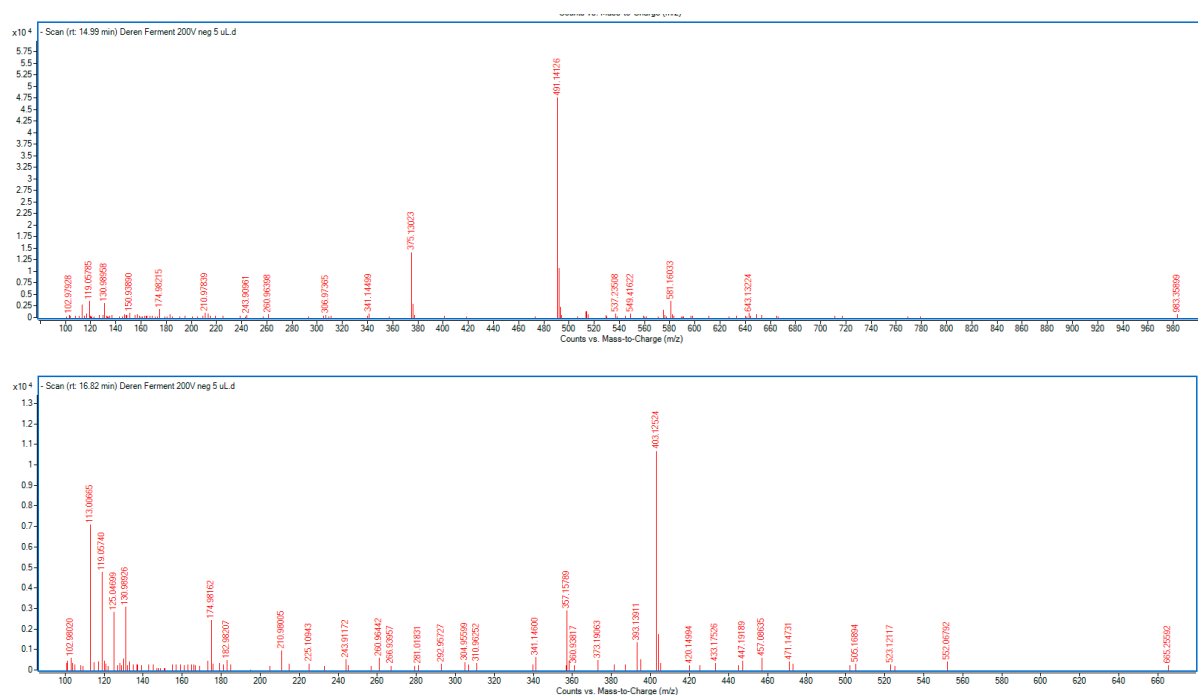


Figure S1. Representative MS spectra of unknown components found in *C. mas* fruit extract. MS data are given in Table 1.





**Figure S2.** Representative MS spectra of main identified components found in *C. mas* fruit extract. MS data are given in Table 1.