

## **Supplementary Materials for**

# **Suppressing Src-mediated EGFR signaling by sustained calcium supply targeting triple-negative breast cancer cells**

**Keun-Yeong Jeong <sup>1,†,\*</sup>, Seon Young Park <sup>1,†</sup>, Min Hee Park <sup>1</sup>, and Hwan Mook Kim<sup>2,\*</sup>**

\*Correspondence to:

Keun-Yeong Jeong ([alvirus@naver.com](mailto:alvirus@naver.com))

Hwan Mook Kim ([painout@gmail.com](mailto:painout@gmail.com))

### **This file includes:**

Supplementary Figures. S1 to S9

Supplementary Figure S1

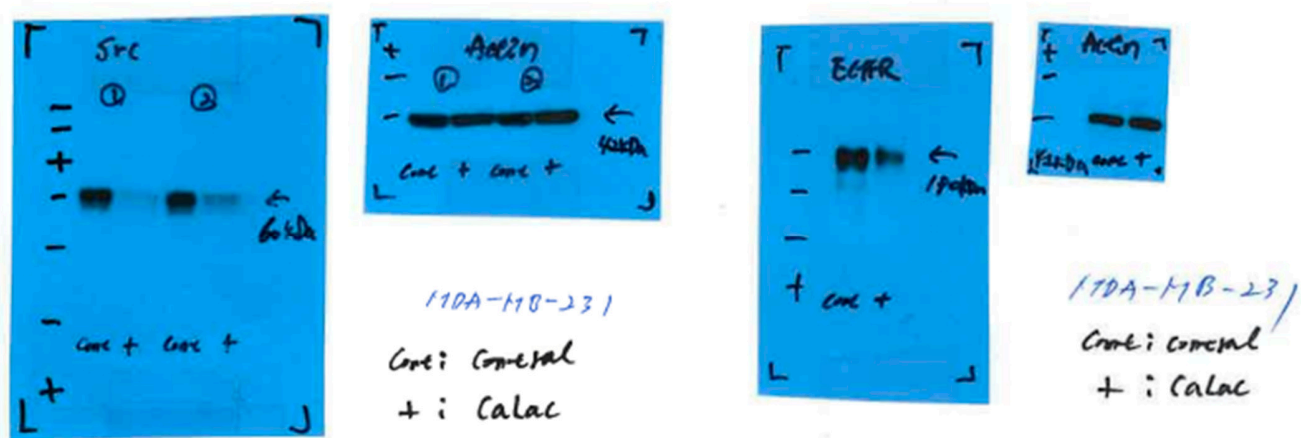


Figure S1. The source films of western blot data for Figures 1f and h.

Supplementary Figure S2

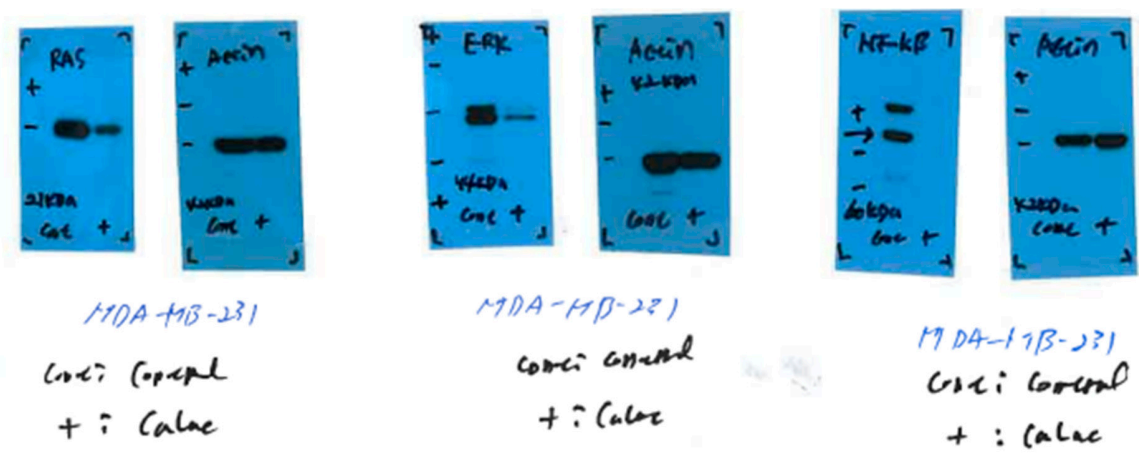


Figure S2. The source films of western blot data for Figures 2b, e, and h.

### Supplementary Figure S3



17DA-MB-281

Cont: General

+ : Calne

**Figure S3. The source films of western blot data for Figures 3b, e, h, and k.**

Supplementary Figure S4

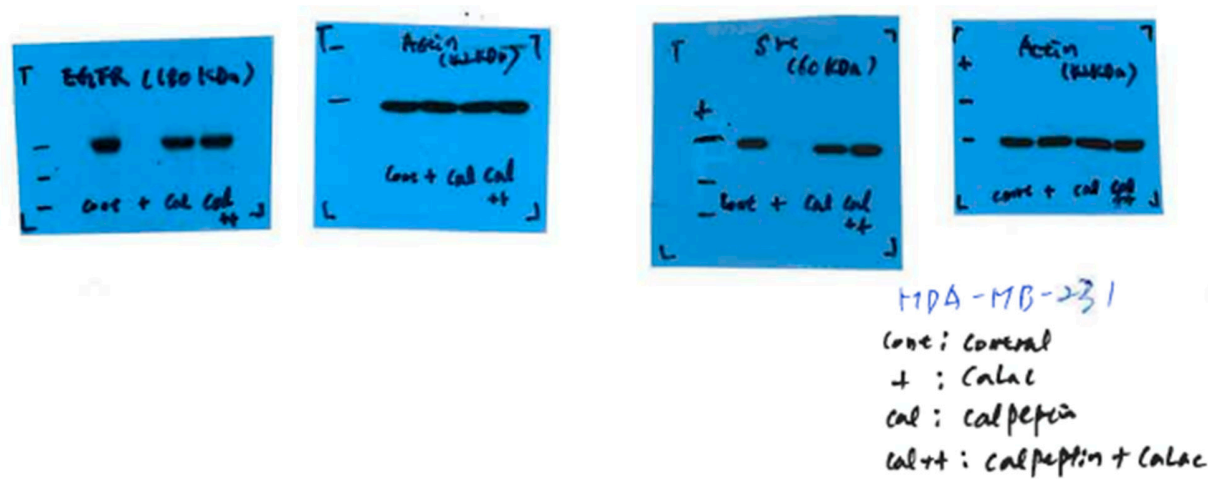


Figure S4. The source films of western blot data for Figures 4b and d.

Supplementary Figure S5

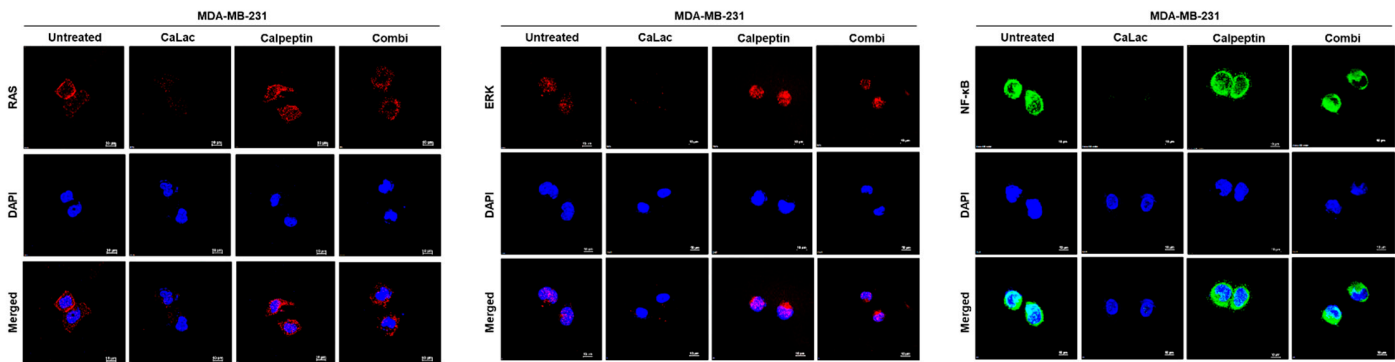


Figure S5. Unmerged immunocytochemical images for Figures 5a, d, and g. Scale bars = 10 μm.

Supplementary Figure S6

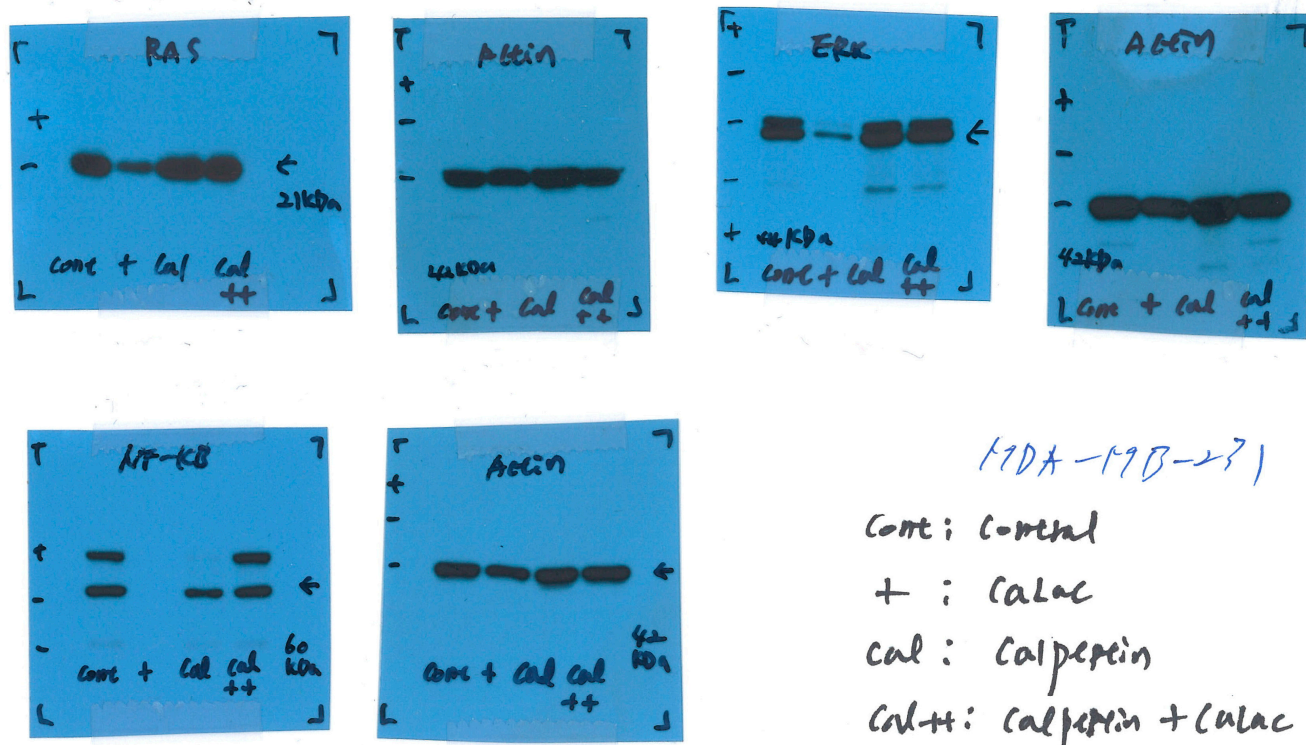


Figure S6. The source films of western blot data for Figures 5b, e, and h.

Supplementary Figure S7

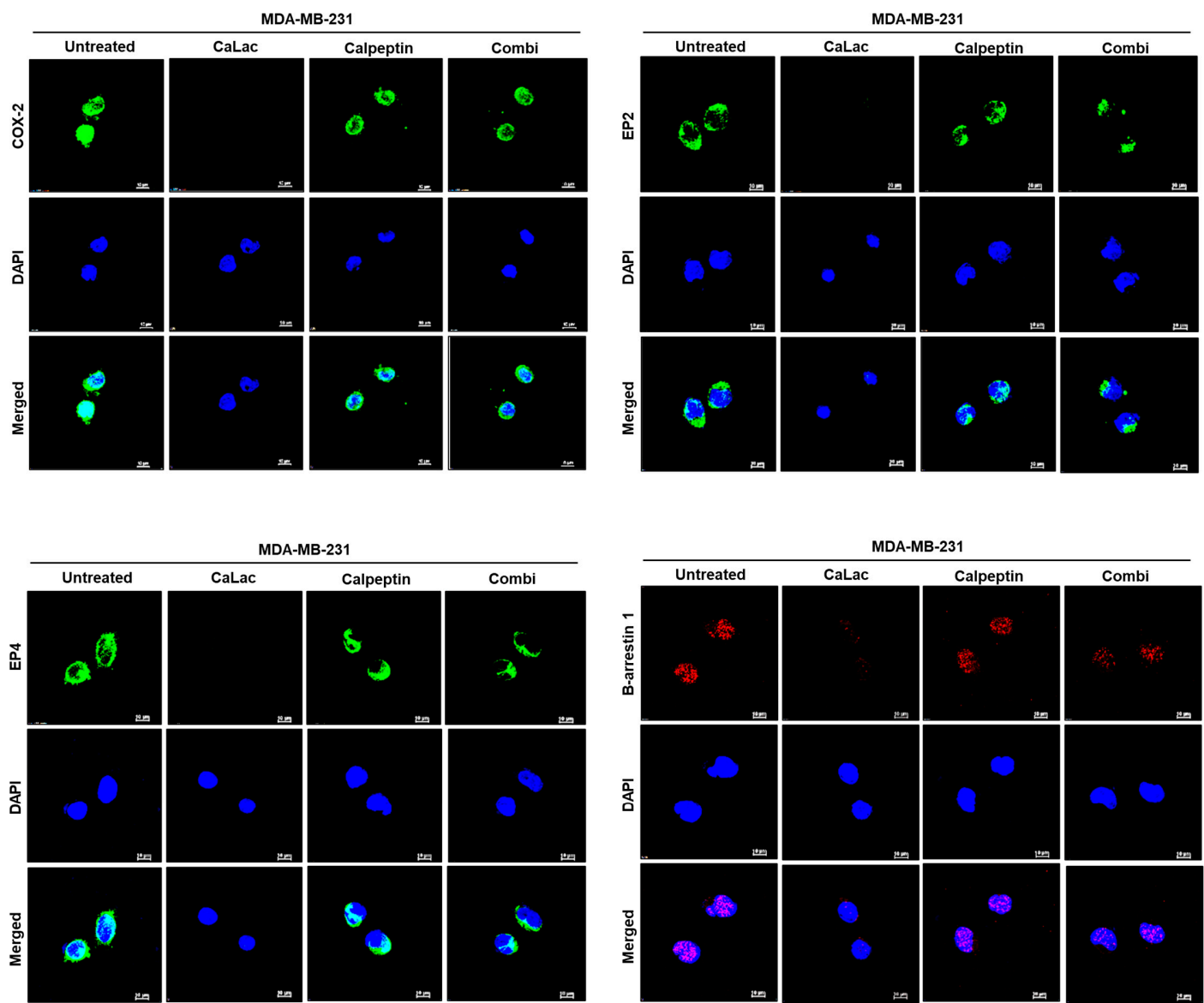


Figure S7. Unmerged immunocytochemical images for Figures 6a, d, g, and j. Scale bars = 10  $\mu$ m.



Supplementary Figure S8

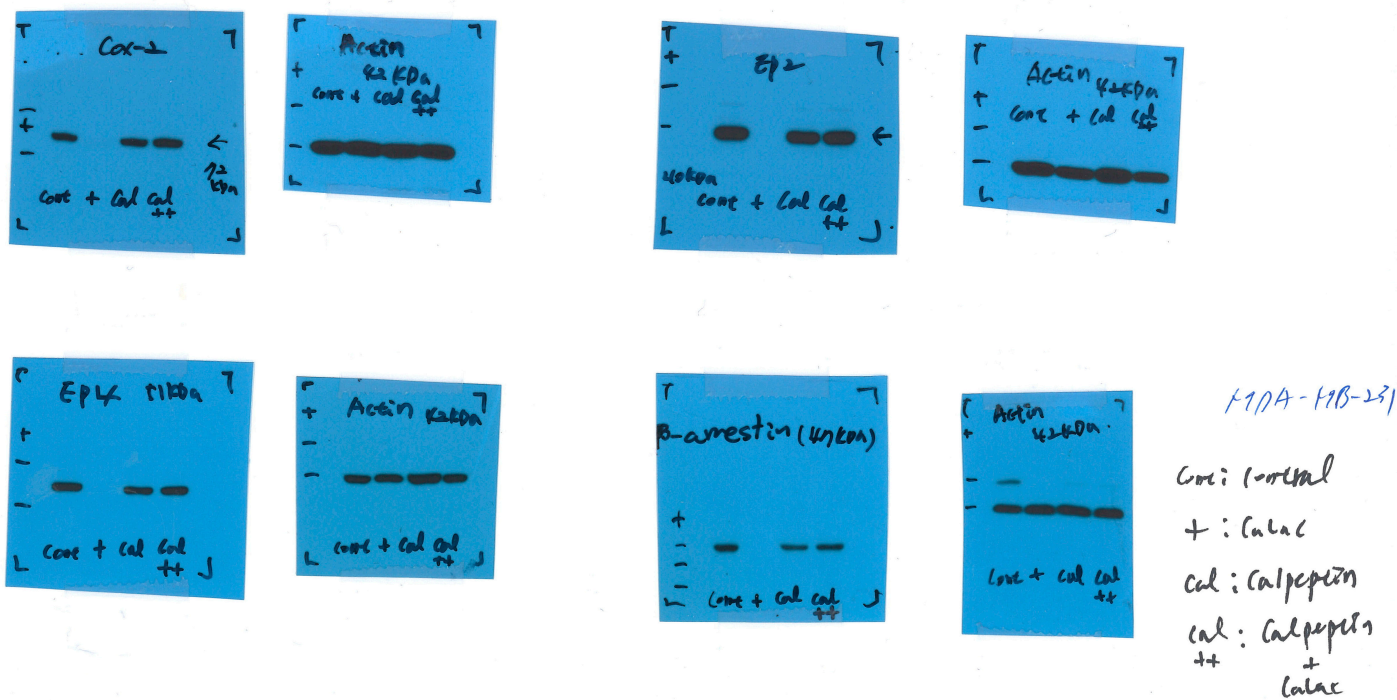


Figure S8. The source films of western blot data for Figures 6b, e, h, and k.

Supplementary Figure S9

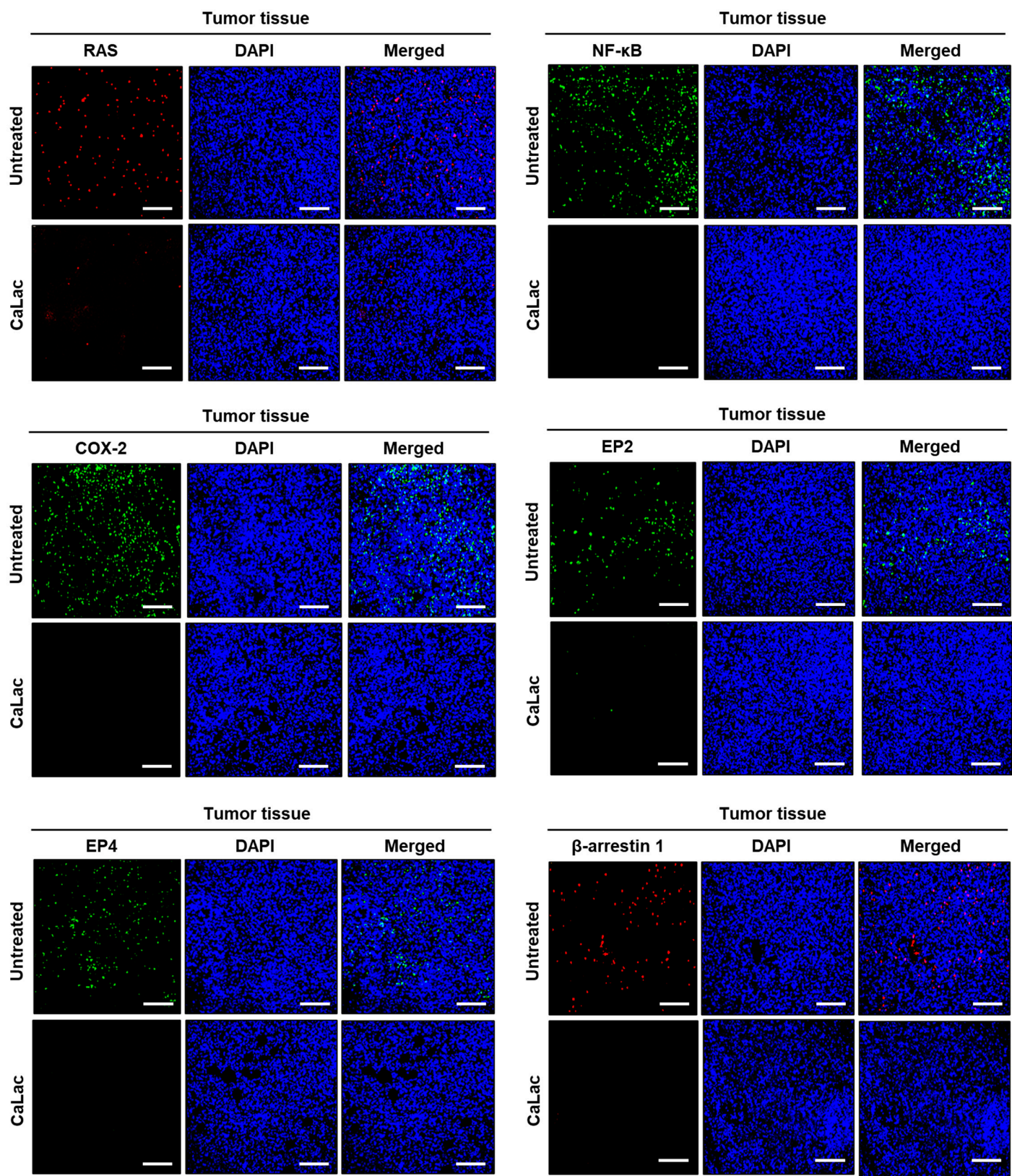


Figure S9. Unmerged immunofluorescence images of tumor tissues for Figures 8 a, c, e, g, i, and k. Scale bars = 200 μm.