

***NTHL1* gene mutations in Polish polyposis patients - weighty player or vague background?**

**Natalia Grot¹, Marta Kaczmarek-Ryś¹, Emila Lis-Tanaś¹, Alicja Kryszczyńska¹, Dorota Nowakowska²,
Anna Jakubiuk-Tomaszuk^{3,4}, Jacek Paszkowski⁵, Tomasz Banasiewicz⁵, Szymon Hryhorowicz¹ and
Andrzej Pławski^{1,5} ***

¹ Institute of Human Genetics, Polish Academy of Sciences, Strzeszyńska 32, 60-479 Poznań, Poland; natalia.grot@igcz.poznan.pl (N.G.); marta.kaczmarek-rys@igcz.poznan.pl (M.K.-R.); szymon.hryhorowicz@igcz.poznan.pl (S.H.); emilia.lis@igcz.poznan.pl (E.L.-T.); alicja.kryszczynska@igcz.poznan.pl (A.K.); andp@man.poznan.pl (A.P.)

² Cancer Genetics Unit, Cancer Prevention Department, The Maria Skłodowska-Curie National Research Institute of Oncology in Warsaw, Warsaw, Poland, dorota.nowakowska@coi.pl (D.N.) ORCID: 0000-0002-7109-5284

³ Department of Pediatric Neurology, Medical University of Białystok, Białystok, Poland, anna.jakubiuk@udsk.pl (A. J. T.)

⁴ Medical Genetics Unit, Mastermed Medical Center, Białystok, Poland, ajaktom@gmail.com (A. J. T.)

⁵ Department of General and Endocrine Surgery and Gastroenterological Oncology, Poznań University of Medical Sciences, Przybyszewskiego 49, 60-355 Poznań, Poland; japaszek@op.pl (J.P.); tbanasiewicz@op.pl (T.B.)

* Correspondence: andp@man.poznan.pl; Tel.: +48(60)4547635

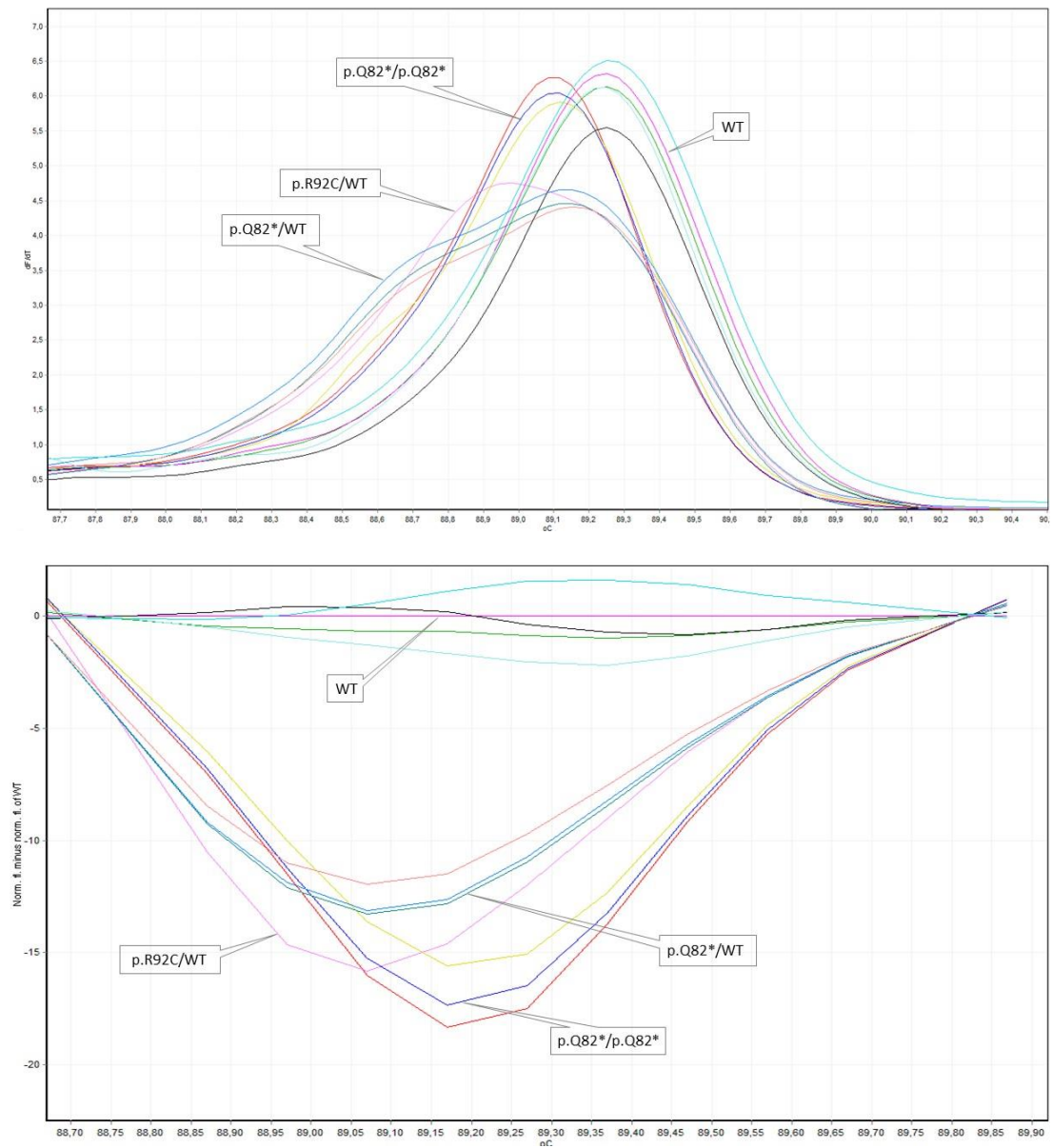


Figure S1. Melting profiles from HRM analysis indicating *NTHL1* mutations in exon 2.

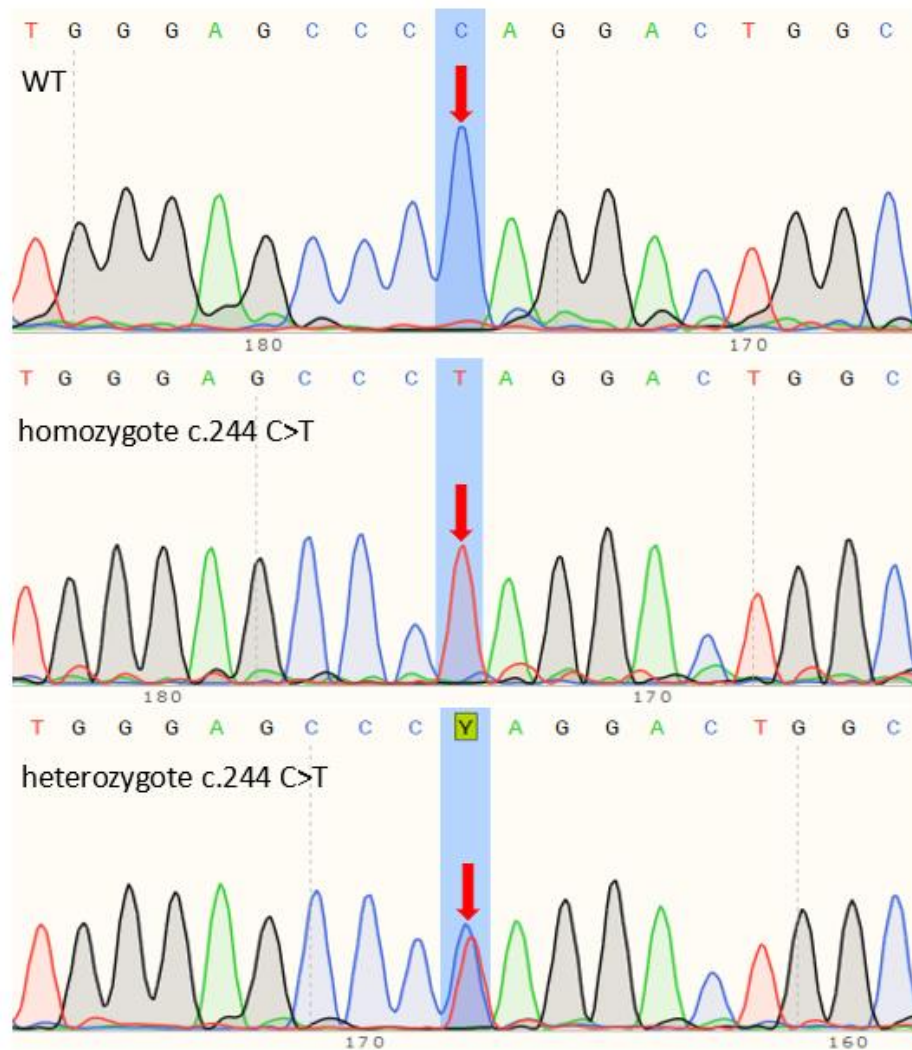


Figure S2. Sequencing chromatograms demonstrating c.244 C>T mutations in the homozygous and heterozygous state compared to wild type in the *NTHL1* gene.

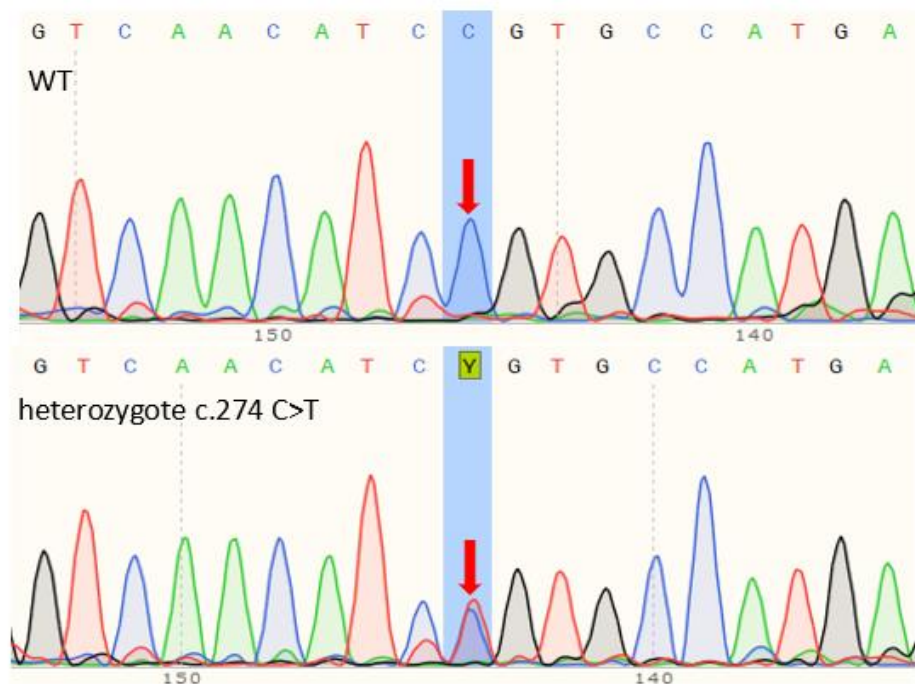


Figure S3. Sequencing chromatograms demonstrating c.274 C>T mutation in the heterozygous state compared to wild type in the *NTHL1* gene.

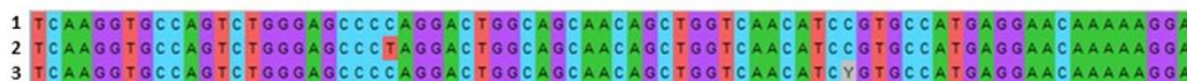


Figure S4. Result of multiple sequence alignment of *NTHL1* variants.
1 - WT; 2 - homozygote c.244 C>T; 3 - heterozygote c.274 C>T.