

Staphylococcus aureus Modulates Carotenoid and Phospholipid Content in Response to Oxygen-Restricted Growth Conditions, Triggering Changes in Membrane Biophysical Properties

Laura Zamudio-Chávez ¹, Elizabeth Suesca ¹, Gerson-Dirceu López ², Chiara Carazzone ³,
Marcela Manrique-Moreno ⁴ and Chad Leidy ^{1,*}

¹ Biophysics Group, Physics Department, Universidad de los Andes, Bogotá 111211, Colombia; ld.zamudio@uniandes.edu.co (L.Z.-C.); e.suesca87@uniandes.edu.co (E.S.)

² PhysCheMath Research Group, Chemistry Department, Universidad de América, Bogotá 111211, Colombia; gerson.lopez@profesores.uamerica.edu.co

³ Laboratory of Advanced Analytical Techniques in Natural Products (LATNAP), Chemistry Department, Universidad de los Andes, Bogotá 111211, Colombia; c.carazzone@uniandes.edu.co

⁴ Chemistry Institute, Faculty of Exact and Natural Sciences, University of Antioquia, Medellín 050010, Colombia; marcela.manrique@udea.edu.co

* Correspondence: cleidy@uniandes.edu.co; Tel.: +57-1-3394949 (ext. 2741)

Table S1. The identified phosphatidyl-glycerol (PG), phospholipid lysyl-phosphatidylglycerol (Lys-PG), and cardiolipin (CL) in extract from *S. aureus*.

Phosphatidylglycerols [M-H] ⁻	Retention Time (min)	<i>m/z</i>	Main fragments (<i>m/z</i>)
PG (30:0)	4.02	693.5	619, 469, 451, 377, 241, 227.
PG (31:0)	4.95	707.5	483, 465, 405, 391, 255, 241, 277.
PG (32:0)	5.65	721.5	648, 497, 479, 405, 269, 241.
PG (33:0)	6.95	735.5	661, 511, 493, 451, 419, 283, 241.
PG (34:0)	7.61	749.5	675, 525, 507, 433, 297, 269, 241.
PG (35:0)	9.08	763.5	688, 539, 521, 447, 377, 311, 241.

Lysyl phosphatidylglycerols [M+H] ⁺	Retention Time (min)	<i>m/z</i>	Main fragments (<i>m/z</i>)
Lys-PG (31:0)	7.45	837.3	819, 802, 537, 410, 301, 283, 266.
Lys-PG (32:0)	8.21	851.3	833, 816, 581, 551, 301, 283, 266.
Lys-PG (33:0)	10.32	865.5	847, 830, 591, 565, 301, 283, 266.
Lys-PG (34:0)	11.27	879.3	861, 844, 579, 511, 301, 283, 266.
Lys-PG (35:0)	12.73	893.4	875, 856, 593, 581, 301, 283, 266.

Cardiolipins [M-H] ⁻	Retention Time (min)	<i>m/z</i>	Main fragments (<i>m/z</i>)
CL (60:0)	21.04	1296.0	755, 675, 647, 619, 377.

CL (61:0)	21.75	1310.0	1068, 769, 647, 633, 619, 391, 377.
CL (62:0)	21.99	1323.9	1081, 783, 755, 647, 619, 405, 377.
CL (63:0)	22.41	1337.9	1095, 797, 89, 633, 619, 423, 405.
CL (64:0)	22.74	1352.0	1109, 783, 703, 674, 647, 629, 405.
CL (65:0)	23.17	1366.0	1123, 797, 688, 661, 647, 419, 405.
CL (66:0)	23.36	1380.0	1137, 811, 783, 675, 647, 433, 405.
CL (67:0)	23.87	1394.0	825, 784, 689, 675, 647, 447, 433.
CL (68:0)	24.03	1408.0	1165, 839, 811, 703, 675, 647, 433.
CL (69:0)	24.32	1422.0	1179, 825, 731, 689, 675, 447, 433.
CL (70:0)	24.62	1436.0	1193, 833, 703, 689, 461, 447, 419.

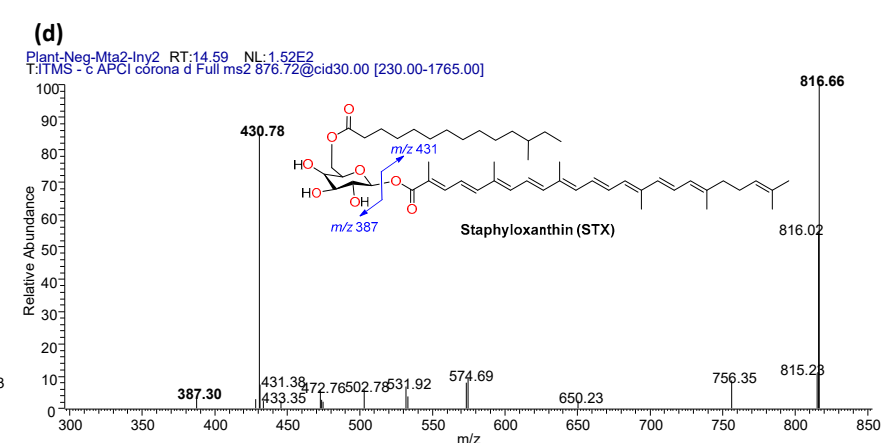
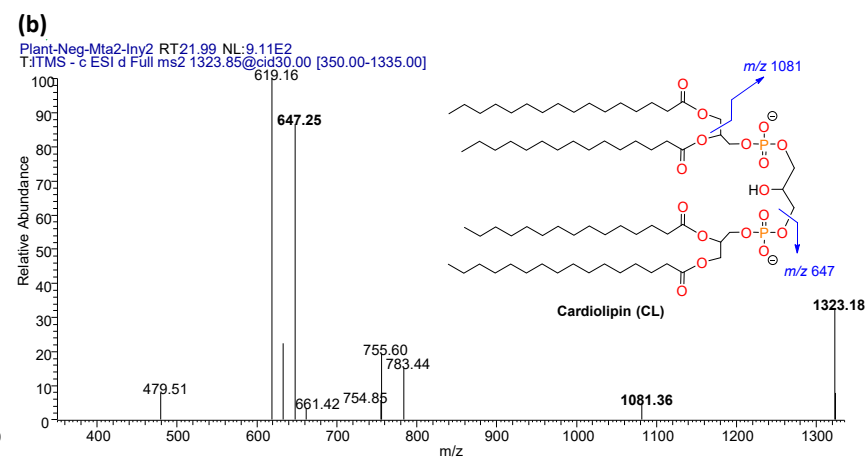


Figure S1. MS/MS spectra of Phosphatidylglycerol (a), Cardiolipin (b), Lysyl-Phosphatidylglycerol (c), and Staphyloxanthin (d).

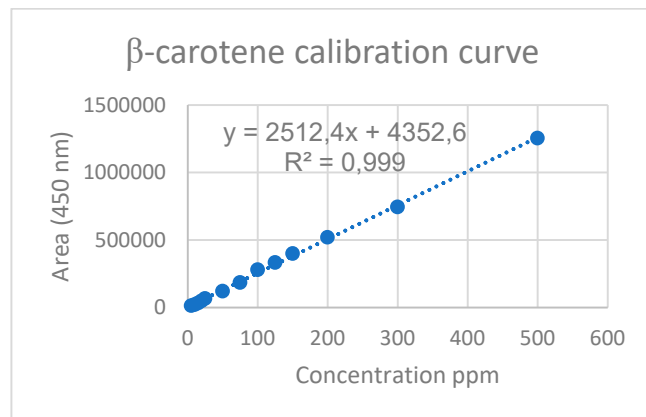


Figure S2. Calibration curve of β -carotene used for the quantification of *S. aureus* carotenoids.