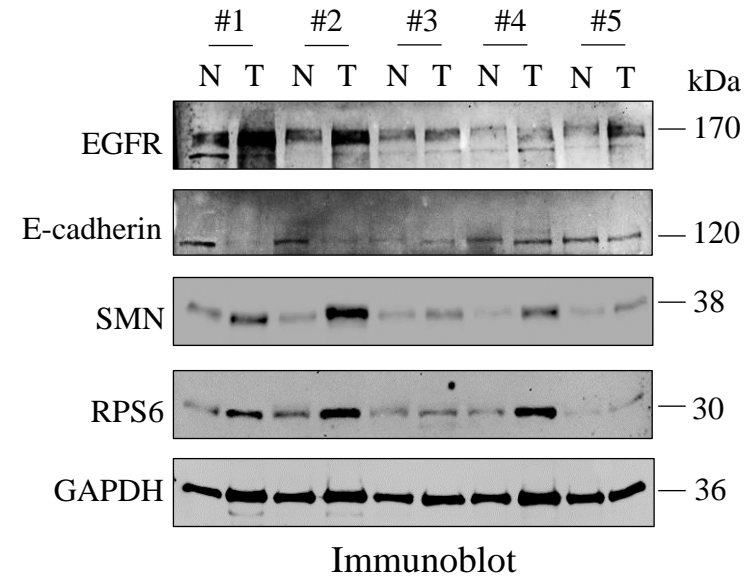
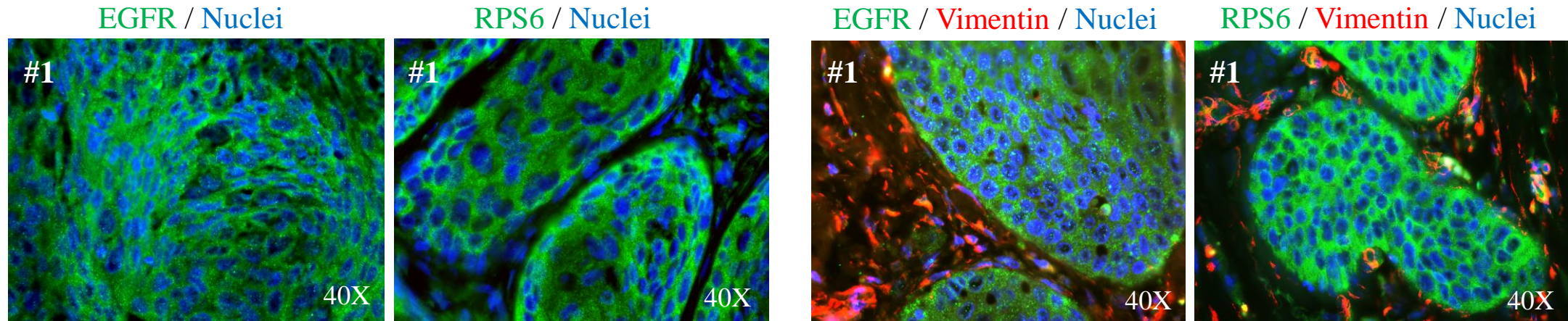


Supplementary Table S1. Oligos used in the study

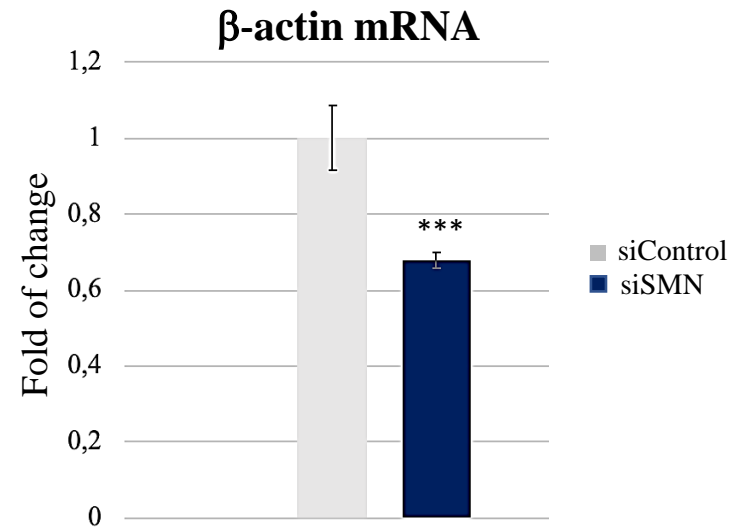
Primer name	Primer sequence (5' - 3')
GAPDH F	CATGAGAAGTATGACAACAGCCT
GAPDH R	AGTCCTTCCACGATACCAAAGT
β -actin F	CATGTACGTTGCTATCCAGGC
β -actin R	CTCCTTAATGTCACGCACGAT
SMN F	GCAGCTTCCTTACAACAGTGG
SMN R	TGAAGCAATGGTAGCTGGGT
Padlock Probe SMN	TCATACTTGTCACATTTTTTTTCTCAATTCTGCTACTTTACTAC CTCAATTCTGCTACTGTACTACTTTTTTGAGAGTGCCTGGGCG
Padlock Probe β -actin	TGCGGTGGACGATGGTTTTTTTCTCAATTCTGCTACTTTACTAC CTCAATTCTGCTACTGTACTACTTTTTTCCGCCTAGAAGCATT
Padlock Probe E-cadherin	TAGCTCTCGGCGTCATTTTTTTCTCAATTCTGCTACTTTACTAC CTCAATTCTGCTACTGTACTACTTTTTTGGCACCGTGAACGTG
RCA Primer	AGTACAGTAGCAGAATTGAG
AlexaFluor 595 labelled Probe	CTCAATTCTGCTACTTTACTAC



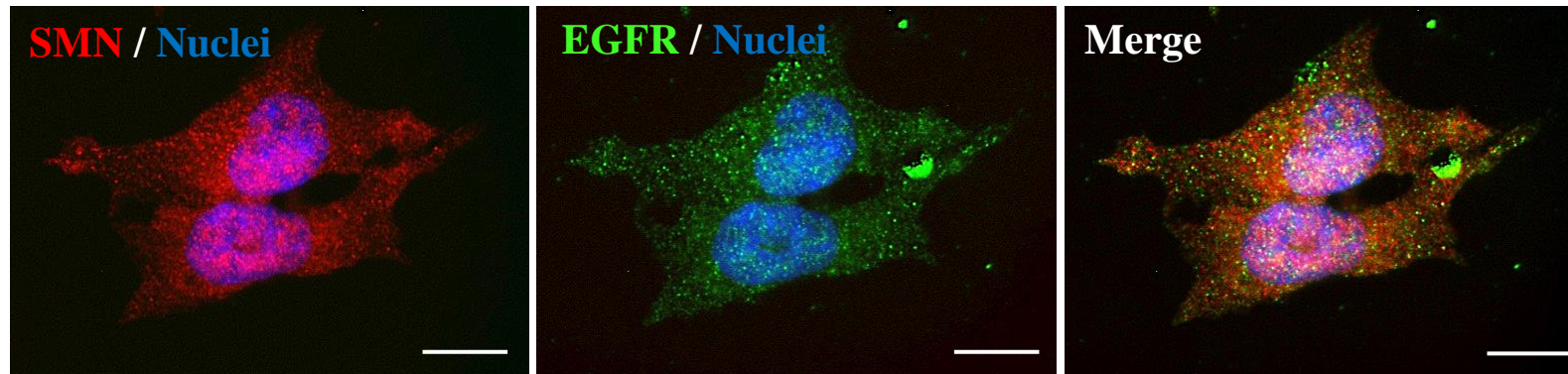
Supplementary Figure S1. Analysis of SMN expression in laryngeal squamous cell carcinoma. Representative western blot analysis of protein extracts from normal adjacent tissues (N) and tumour tissues (T) of patients with laryngeal squamous cell carcinoma (LSCC). The number (#) identifies patients in Table 1. Equal amounts of proteins were blotted and checked for EGFR, E-cadherin, SMN and RPS6. Levels of GAPDH were monitored as protein loading control.



Supplementary Figure S2. Representative fluorescence microscopy images of LSCC sections. De-paraffined sections of LSCC tissue from patient #1 were immunostained with an anti-EGFR antibody (green), or an anti-RPS6 antibody (green), used alone or in combination with vimentin immunostaining (red), as indicated. Nuclei were stained with DAPI (blue). Images were acquired with a 40X objective.

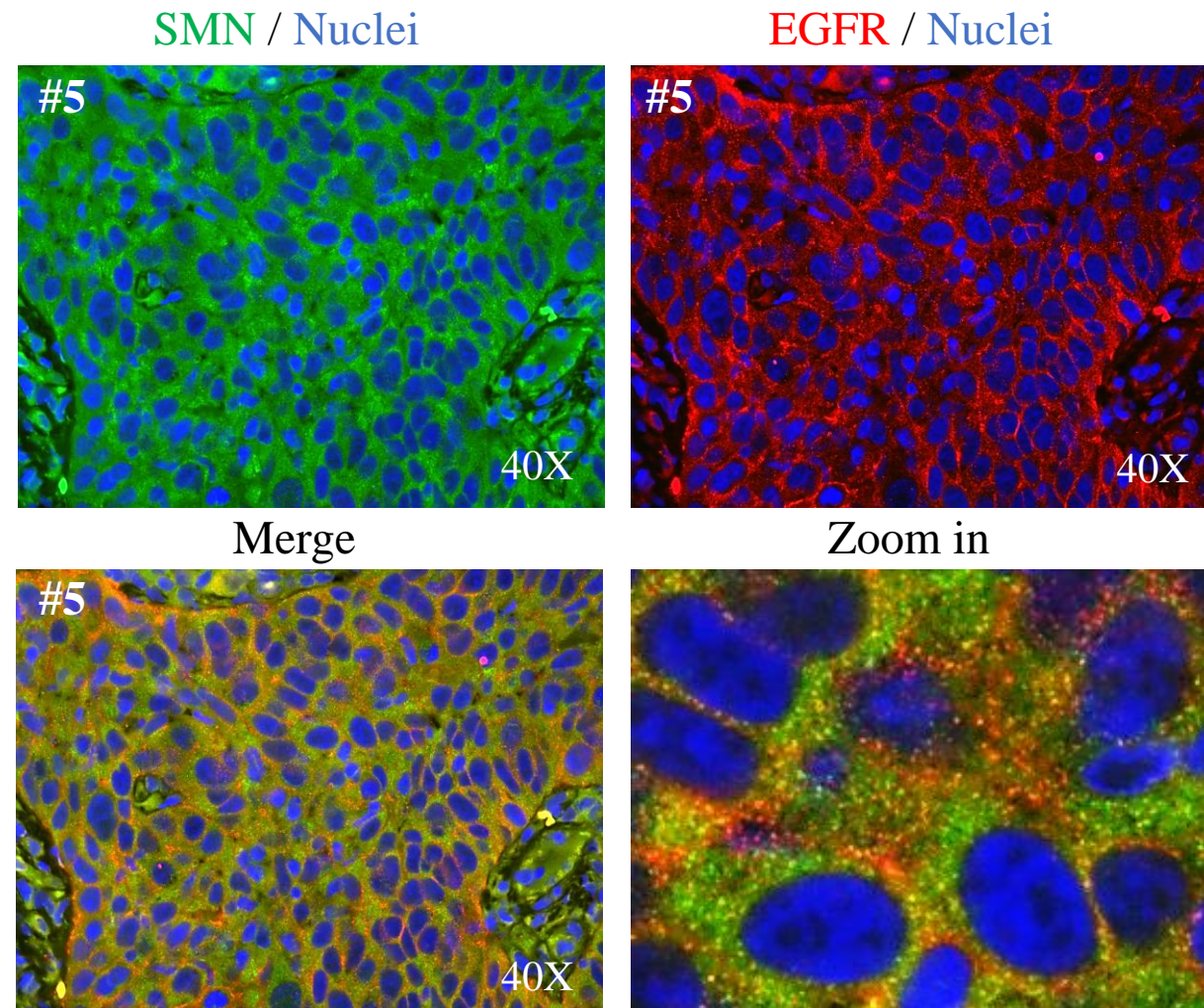


Supplementary Figure S3. β-actin expression levels in SMN-deficient HLaC-79 cells. Semiquantitative RT-PCR analyses evaluating β-actin mRNA normalized to GAPDH mRNA in siSMN- and siControl-transfected HLaC-79 cells. The graph illustrates the mean of three independent experiments. Error bars represent s.d. Asterisks indicate significant differences using unpaired t-test (*** $p < 0.01$).



Supplementary Figure S4. Representative fluorescence microscopy images.

HLaC-79 cells subjected to dual immunofluorescence for SMN (red) and EGFR (green). Nuclei were stained with DAPI. Scale bar 10 μm .



Supplementary Figure S5. Representative images of SMN and EGFR localizations. De-paraffined sections of LSCC tissue from patient #5 were subjected to dual immunofluorescence for SMN (green) and EGFR (red). Nuclei were stained with DAPI (blue). The images were acquired with a 40X objective.