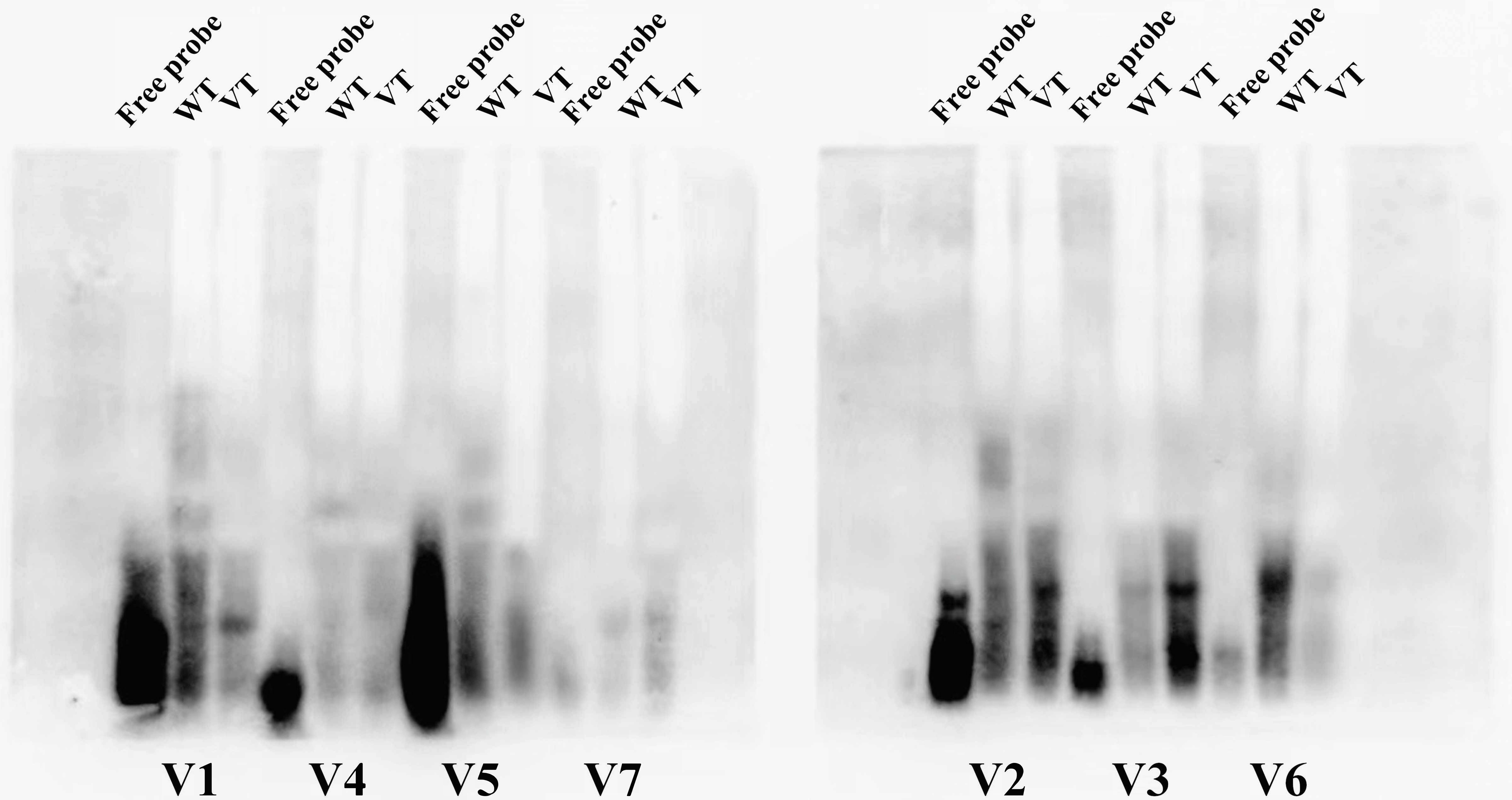


**Figure S1 Original image of electrophoretic migration analysis experiment.**  
**Correspond to V1-V7 in Figure 4A**





**Figure S2 DNAMAN comparison results for variant rs983891177**

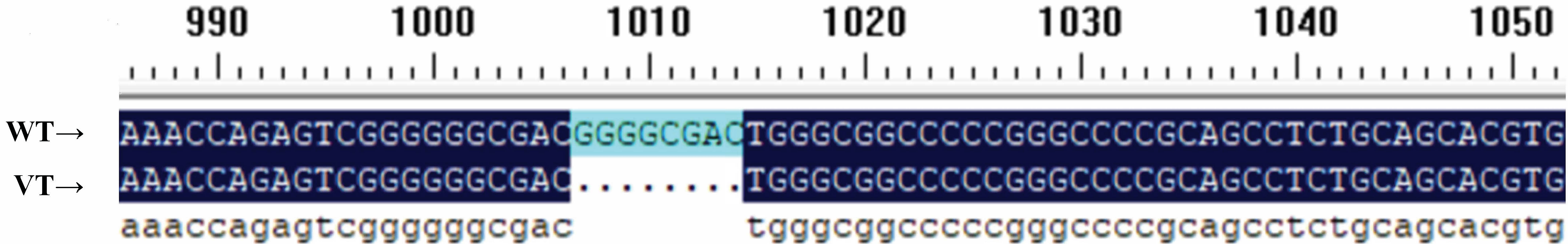




Table S1 Primers used in this study.

Primers	Sequences 5'-3'	Location	Position
<b>PCR and sequencing primers</b>			
CITED2-F1	5'-AAAGGAAGAGTCCCAGCCGT-3'	3804	-1197
CITED2-F2	5'-TTTCTGCTCCGAAGACCGAG-3'	5221	200
<b>Primers containing restriction sites</b>			
CITED2-KpnIa,b	5'-(KpnI)-GGGGTACCAAAGGAAGAGTCCCAGCCGT-3' CCCAGCCGT-3'	3804	-1197
CITED3-BglIIa,b	5'-(BglII)-CAAGATCTTTTCTGCTCCGAAGACCGAG-3' AGACCGAG-3'	5221	200
<b>The double-stranded biotinylated oligonucleotides for the EMSA</b>			
g.3949 C>T	5'-GCAAGAGCAGCCTTACTCAG(C/T)CCTCAAATTTCTTAATTAC-3'		
g.4461 T>C	5'-CAGGAAAGGGCGCAT(T/C)ATTTGTCCGGGTCTT-3'		
g.4735 T>C	5'-GGCAGGGGAGGATTT(T/C)CCCCCTGCCTCGG-3'		
g.5059 G>A	5'-GGGCAACGGAGGG(G/A)AAATAAAAGGGAACGGC-3'		
g.4047_4048ins	5'-CGTTTGTACACACCCCC( /C)ACCTCCCGGATCCAG-3'		
g.4330_4331insC	5'-CCTCCCCGCCCCC( /C)AGCTCCTGTCCTTGAAA-3'		
	g.4808_4815delGGGGCGAC		-