

Figure S1. Mass spectra of Lys-C peptides originated from (a) non-treated and (b) *NtPhyt*-treated CRT3 bands (arrows in Figure 1A); (c) non-treated and (d) *NtPhyt*-treated CRT3 D420E bands (lanes 3 and 4 in Figure 2A). Positions of the characteristic C-terminal semi-LysC peptides and of the N-terminal peptides are marked in red.

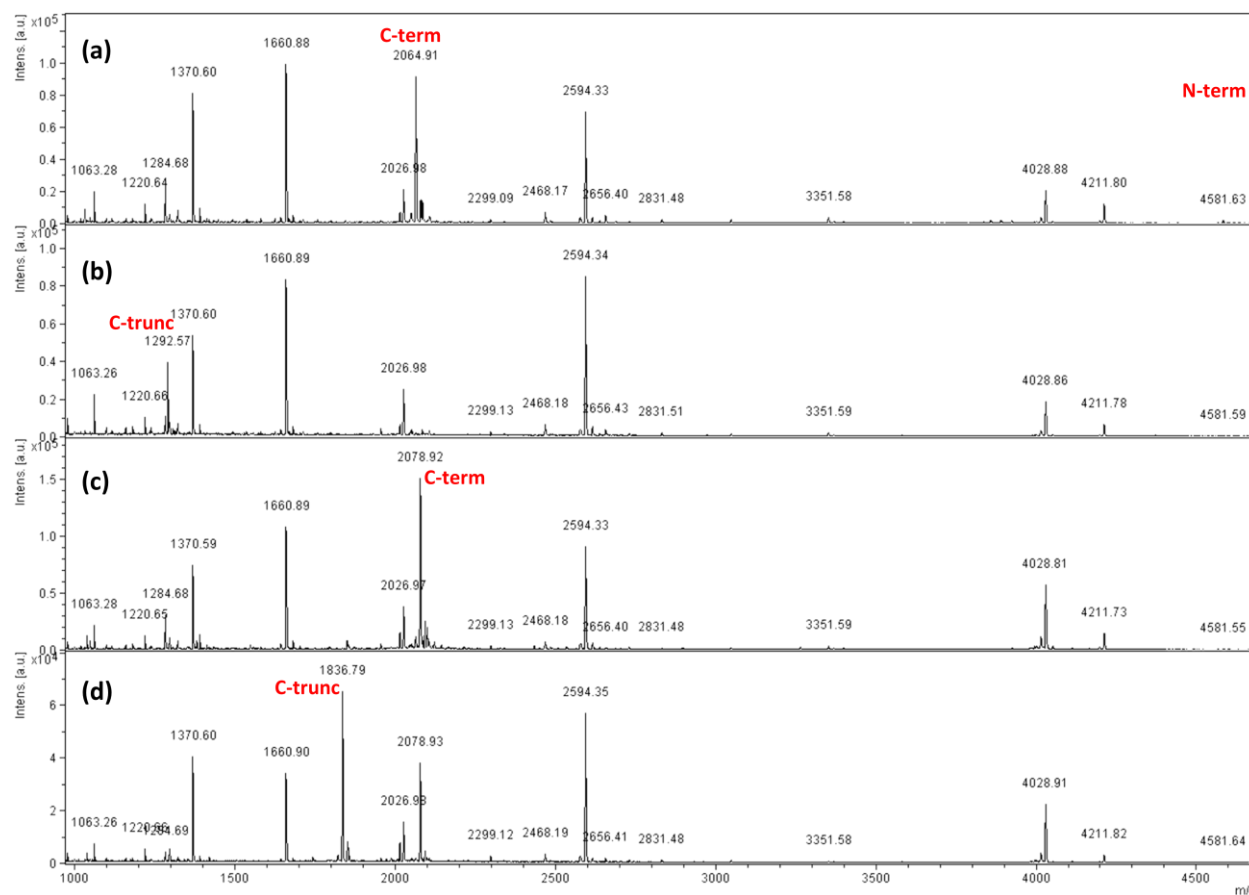


Figure S2. MS/MS fragmentation spectra of the characteristic C-terminal semi-LysC peptides of CRT3 ((a) non-treated, (b) *N*-Phyt-treated) and CRT3 D420E mutant ((c) non-treated, (d) *N*-Phyt-treated) marked in Figure S1.

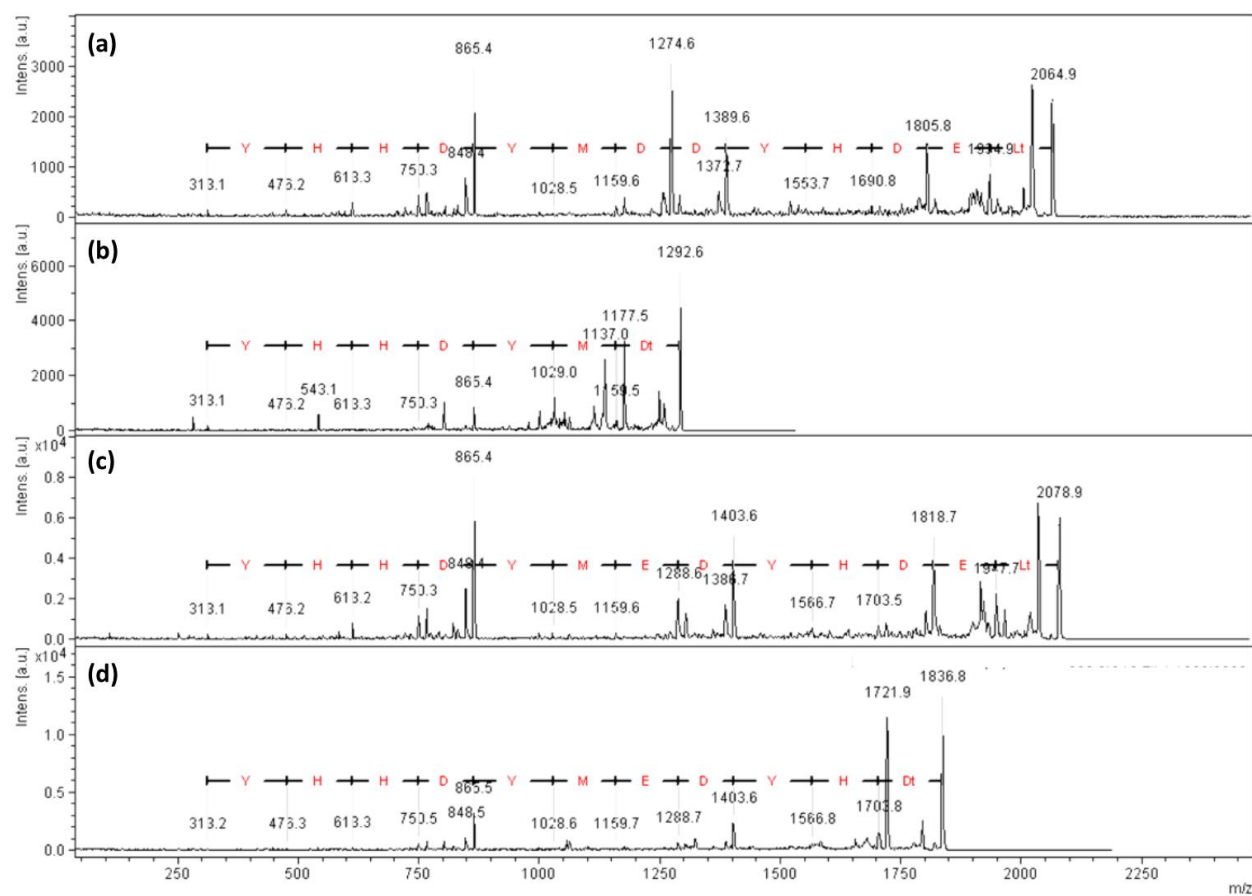


Table S1. List of the primers used in this study.

| # | Primer name | Sequence |
|----|--------------------|--|
| 1 | CRT3_Pst700_dir | AAGCCTGCAGACTGGGAAGAC |
| 2 | CRT3_D420E_Sac_rev | CGGAGCTCTTAAAGTTCATCATGGTAGTCTTCCATATAATC |
| 3 | CRT_Kpn_Nco_dir | CAAGGTACCATGGCTCTCTCTGAGCATAAAC |
| 4 | CRT_SP_Sal_rev | GTGGTCGACGAAAATCTCAGATGCTGAAG |
| 5 | CRT_LF_Apa_Nde_dir | GAGGGCCCGCATCTCATATGTCTGAGATTTTCTTTGAAGAAAG |
| 6 | CRT_1-420_Sac_rev | CGGAGCTCTTAATCCATATAATCGTGGTGATAGC |
| 7 | EGFP_Sal_dir | GAGGTCGACAAATCTGAGATGGTGAGCAAGGGCGAG |
| 8 | EGFP_Apa_rev | GTGGGCCCGACCTGGAGACTTGTACAGCTCGTCCATGC |
| 9 | pLH_seq_dir | GACCTCGAGAATTCTCAAC |
| 10 | NtPhyt-His_rev | GGGAGCTCTTAATGGTGATGATGATGGTGCAGAGGATCCAC TCCTATG |