

Supplementary file

Supplementary file 1: Figure of fluorescent intensity analysis of pro-inflammatory cytokine markers

Supplementary figures

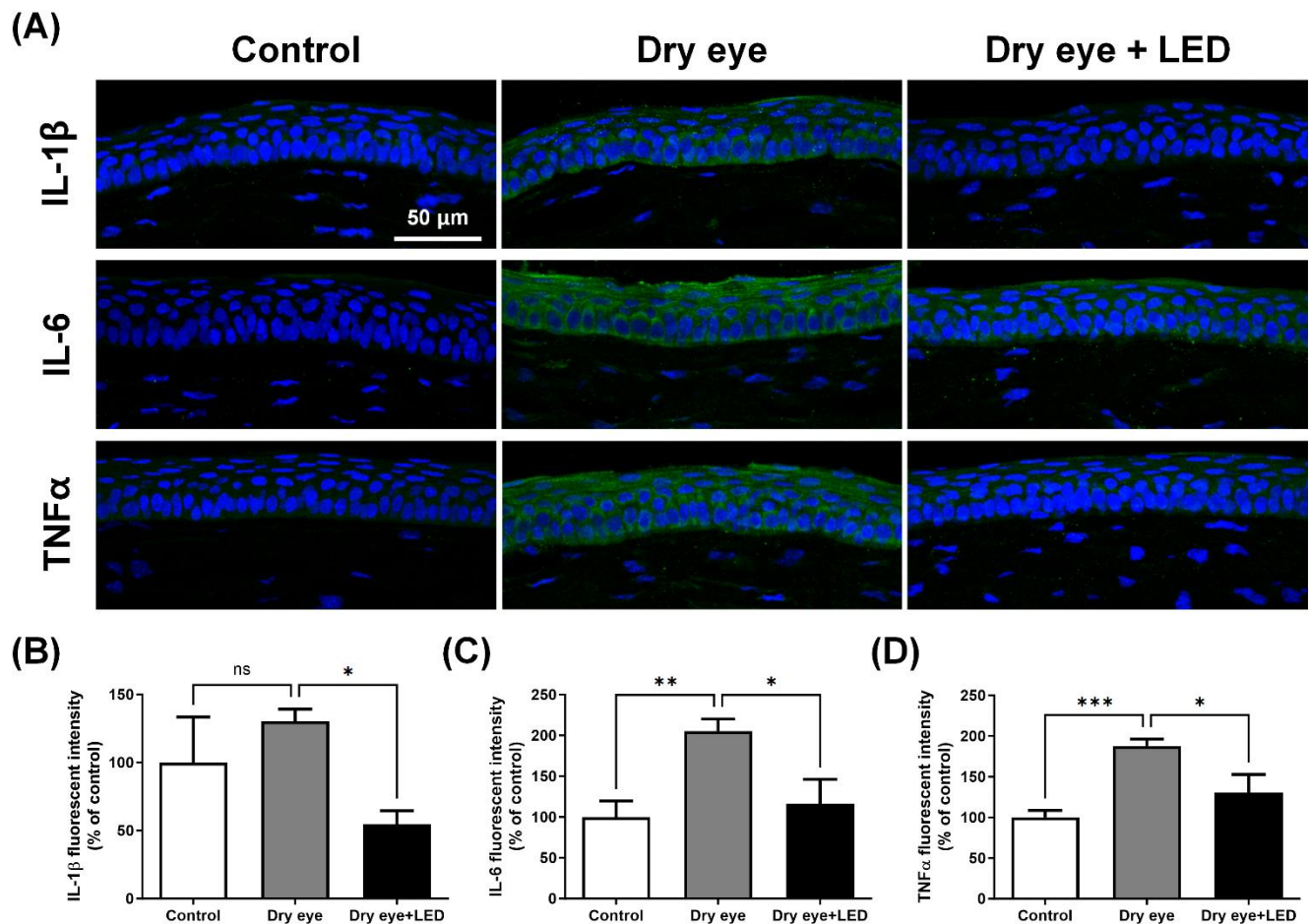


Figure S1. Multi-wavelength LED attenuated the expression of pro-inflammatory markers in the corneal epithelium of dry eye mice. (A) Representative images of immunostained IL-1 β , IL-6 and TNF- α (green) showed the expression pattern of pro-inflammatory cytokines in the corneal epithelium. The scale bar indicates 50 μ m. (B-D) The fluorescent intensity of pro-inflammatory cytokines was quantified (IL-1 β , IL-6 and TNF- α , respectively). This quantification revealed that the multi-wavelength LED significantly decreased the expression of pro-inflammatory markers in the corneal epithelium of dry eye. Data are expressed as the mean \pm SEM; * p < 0.05, ** p < 0.01, *** p < 0.001 relative to Dry eye group (one-way ANOVA with the Bonferroni post-hoc test).