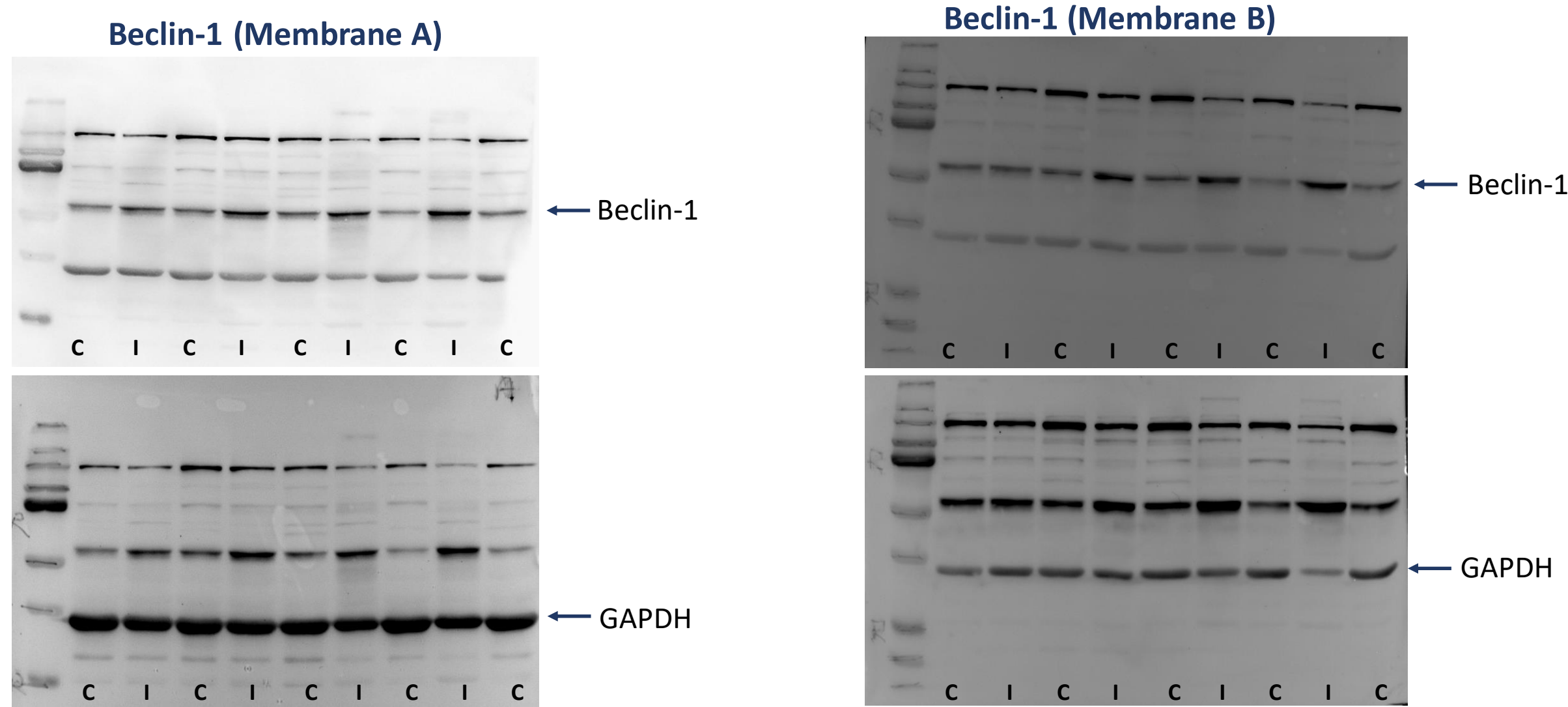


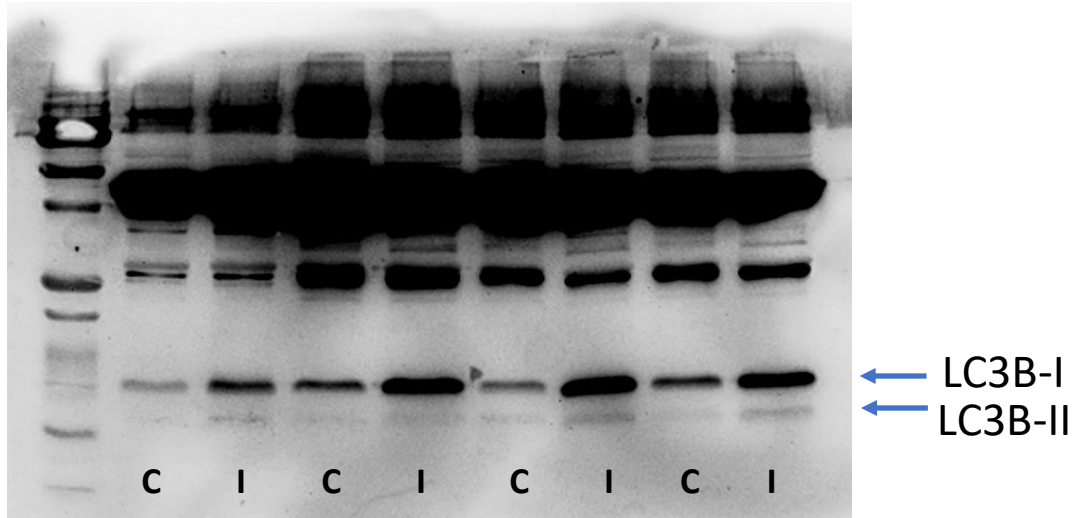
Original Western Blots (corresponding to Figure 7A in the main article). Chemiluminescence was detected using the Amersham ECL kit (Amersham, Buckingham, UK) and the Uvitec Alliance 6.7-01 Western Blot imaging system (Uvitec, Cambridge, UK).



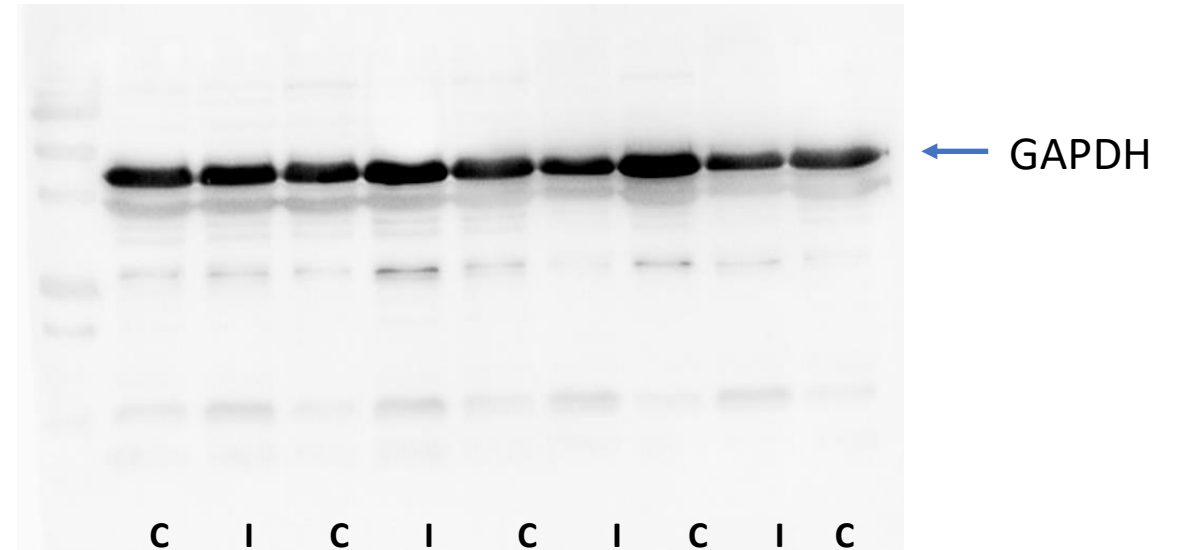
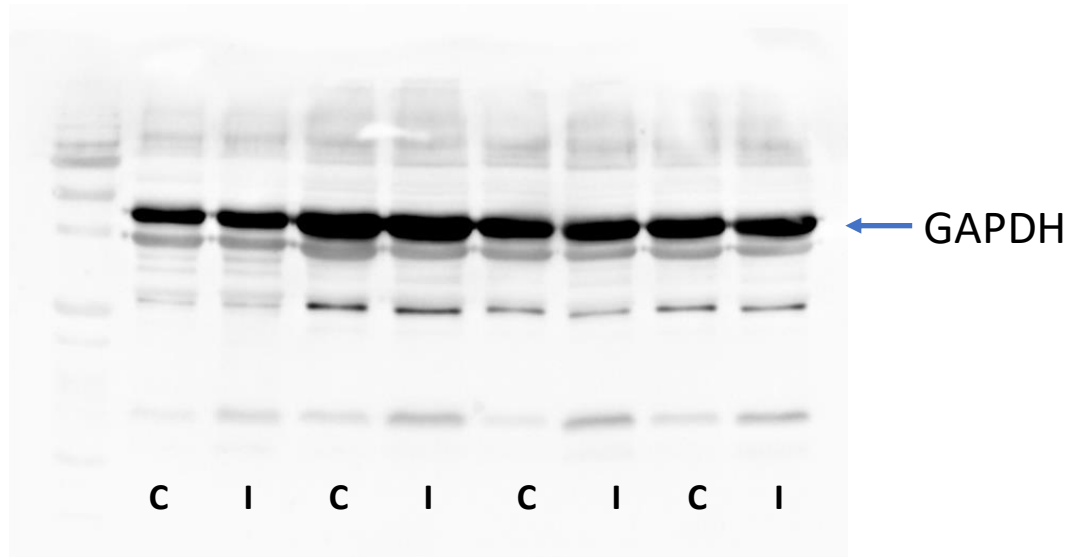
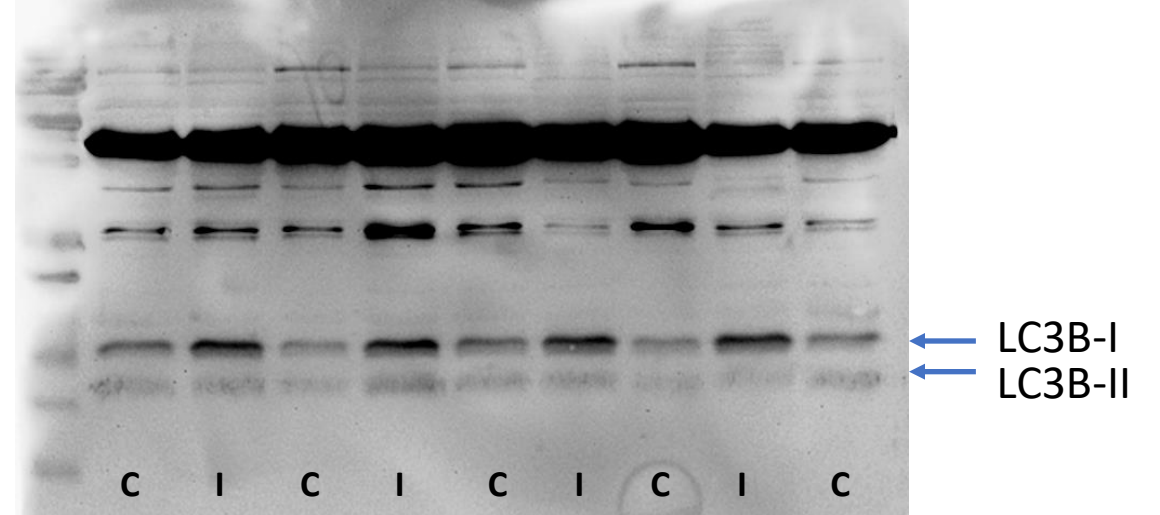
The top membranes were probed for Beclin-1 (Cell Signaling 3738S; Dilution 1:1000), the lower membranes for GAPDH (Antibody: Abcam Ab181602 ; Dilution 1: 40.000). Sample order is as shown at the bottom of the membrane (C=contra; I=Ipsi).

Original Western Blots (corresponding to Figure 7B in the main article). Chemiluminescence was detected using the Amersham ECL kit (Amersham, Buckingham, UK) and the Uvitec Alliance 6.7-01 Western Blot imaging system (Uvitec, Cambridge, UK).

**LC3B I/LC3B II (Membrane A)**



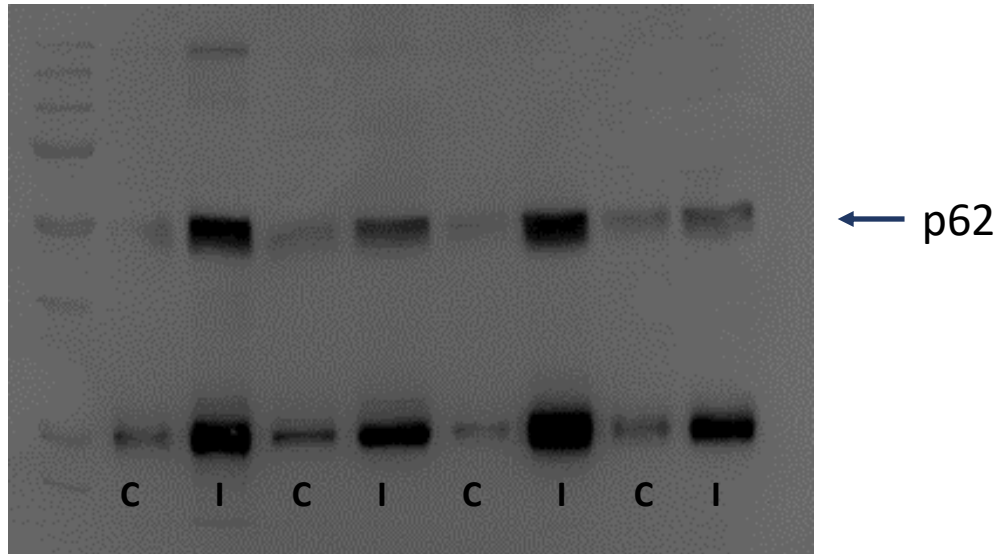
**LC3B I/LC3B II (Membrane B)**



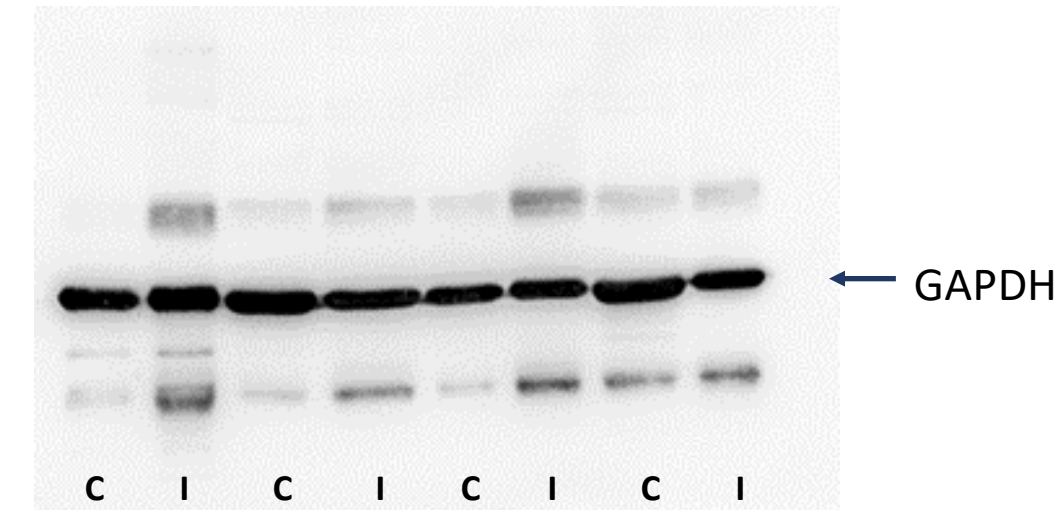
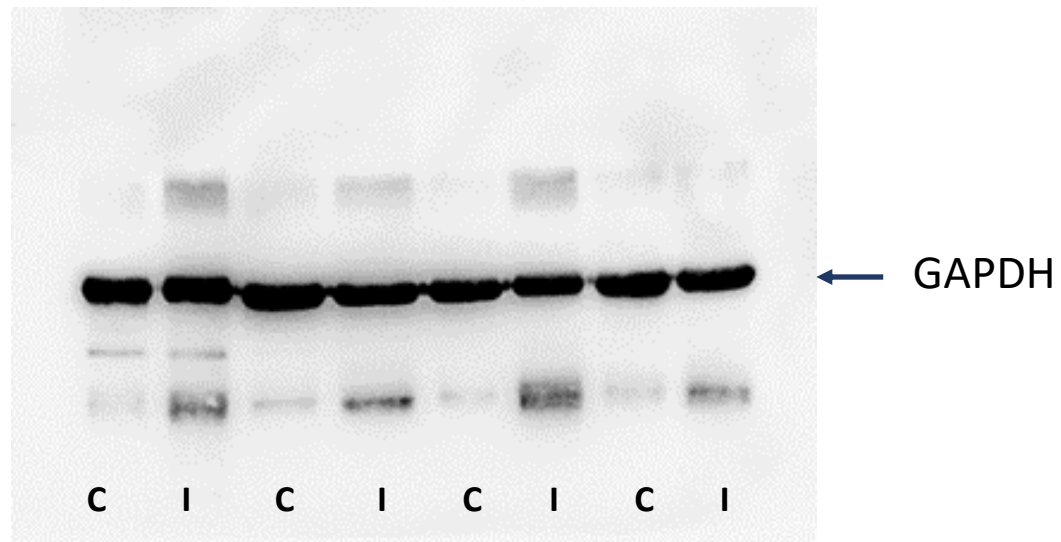
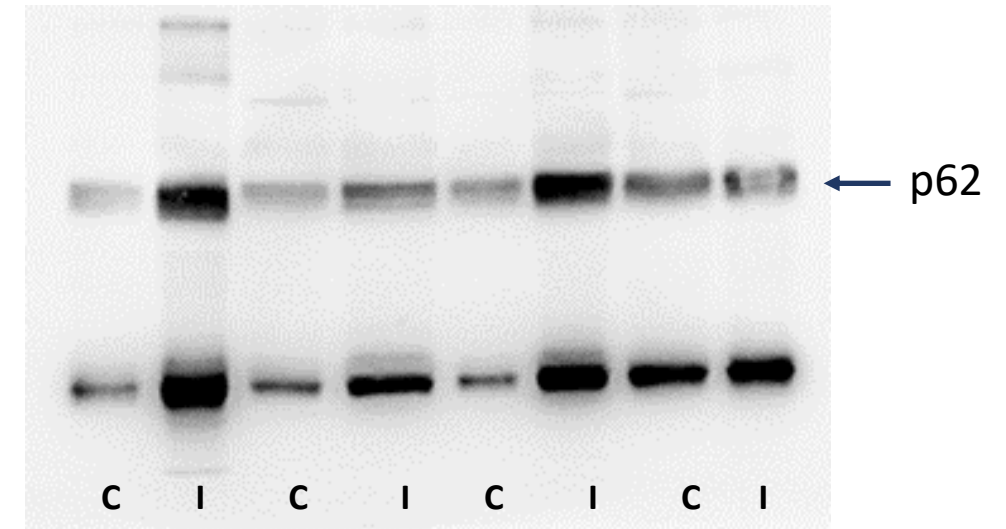
The top membranes were probed for Beclin-1 (Antibody: MBL PM-036; Dilution 1:1000), the lower membranes for GAPDH (Antibody: Abcam Ab181602 ; Dilution 1: 40.000). Sample order is as shown at the bottom of the membrane (C=contra; I=ipsi).

Original Western Blots (corresponding to Figure 7C in the main article). Chemiluminescence was detected using the Amersham ECL kit (Amersham, Buckingham, UK) and the Uvitec Alliance 6.7-01 Western Blot imaging system (Uvitec, Cambridge, UK).

**p62 (Membrane A)**



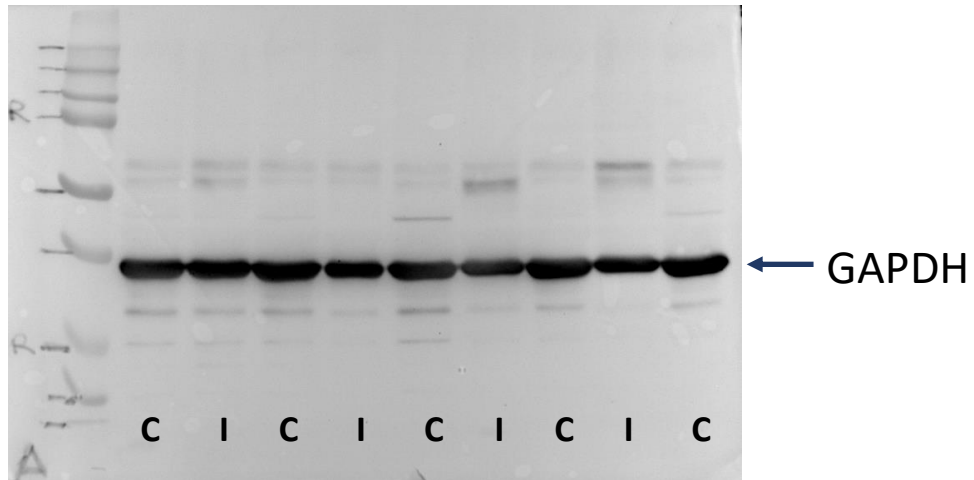
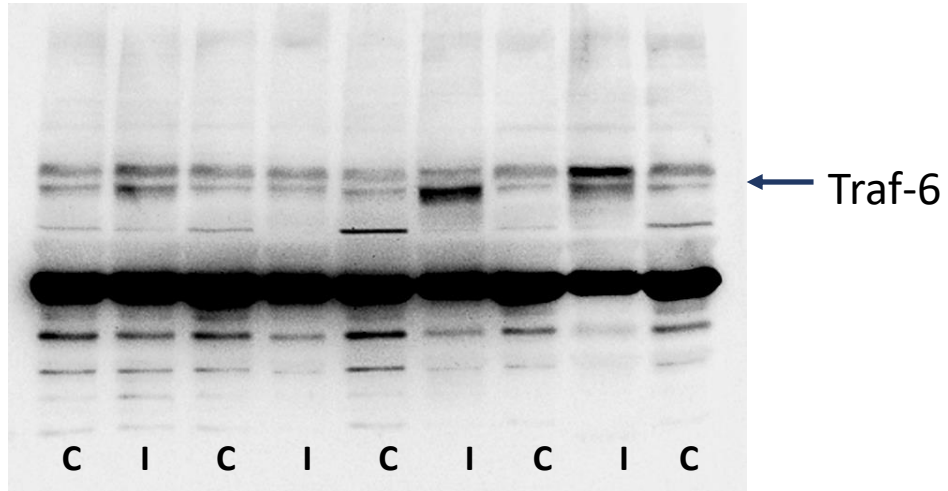
**p62 (Membrane B)**



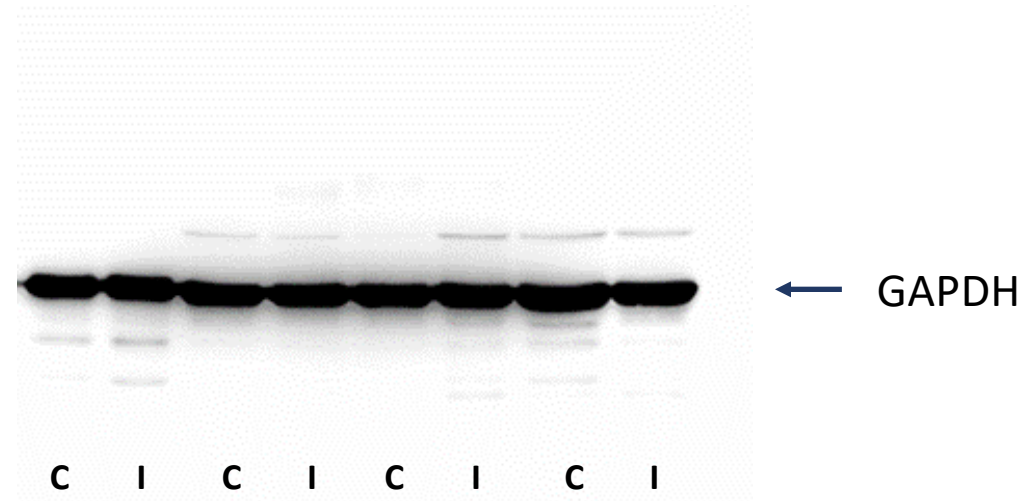
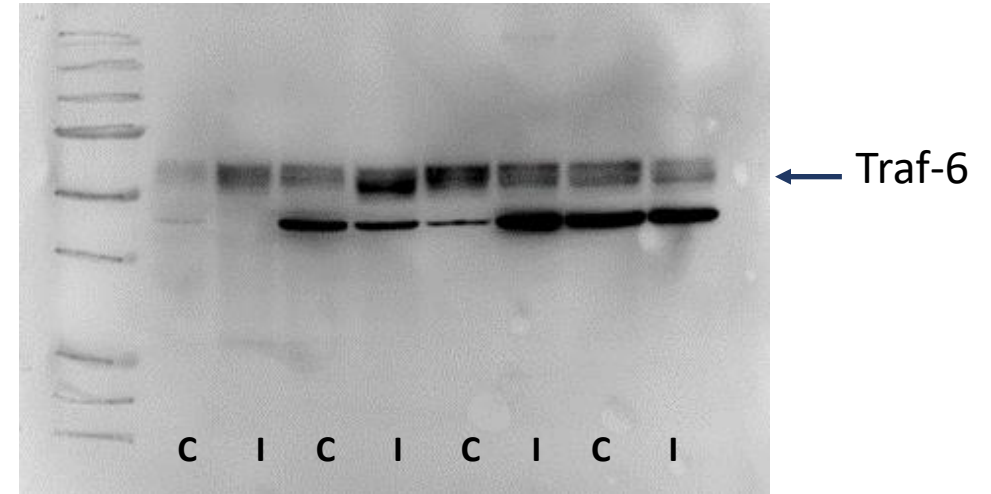
The top membranes were probed for p62 (Antibody: MBL M162-3; Dilution 1:1000), the lower membranes for GAPDH (Antibody: Abcam Ab181602 ; Dilution 1: 40.000). Sample order is as shown at the bottom of the membrane (C=contra; I=Ipsi).

Original Western Blots (corresponding to Figure 7D in the main article). Chemiluminescence was detected using the Amersham ECL kit (Amersham, Buckingham, UK) and the Uvitec Alliance 6.7-01 Western Blot imaging system (Uvitec, Cambridge, UK).

### TRAF-6 (Membrane A)



### TRAF-6 (Membrane B)

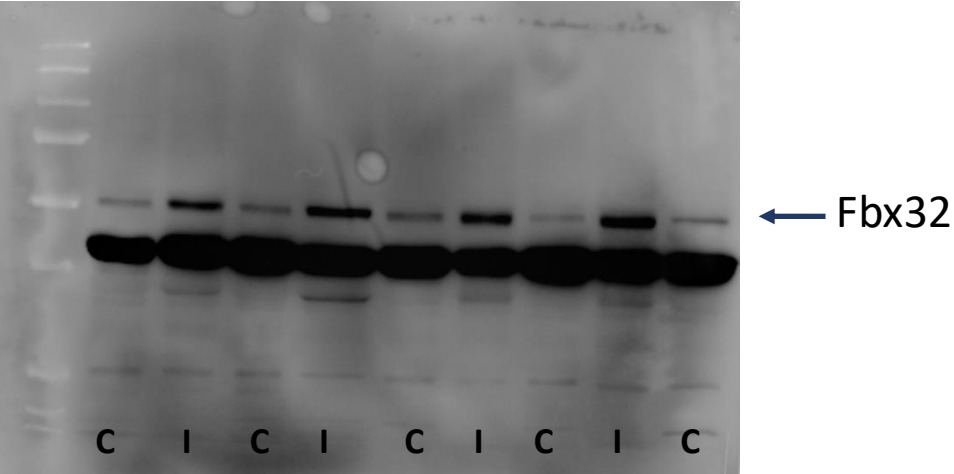


The top membranes were probed for TRAF-6 (Antibody: Abcam Ab33915; Dilution 1:1000), the lower membranes for GAPDH (Antibody: Abcam Ab181602 ; Dilution 1: 40.000). Sample order is as shown at the bottom of the membrane (C=contra; I=Ipsi).

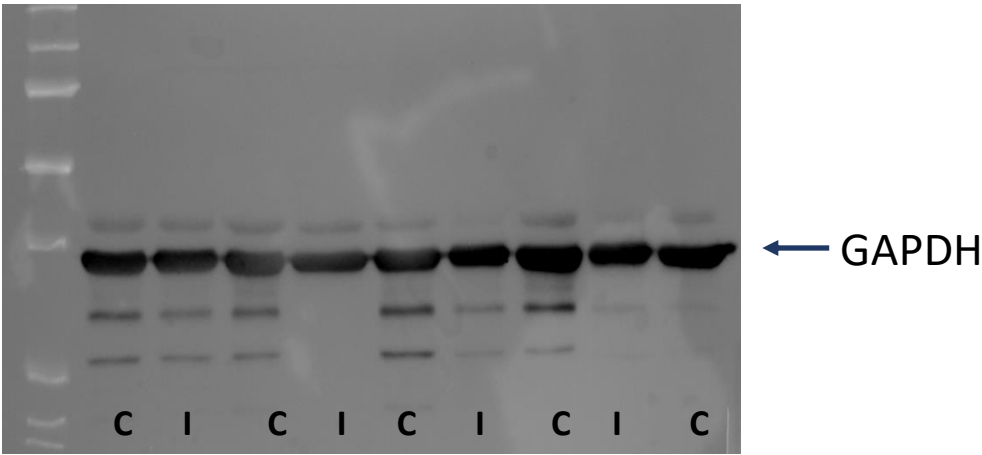
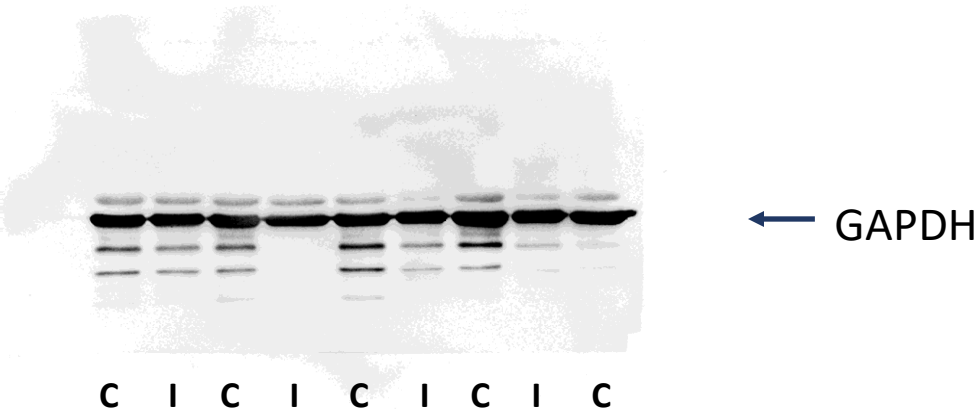
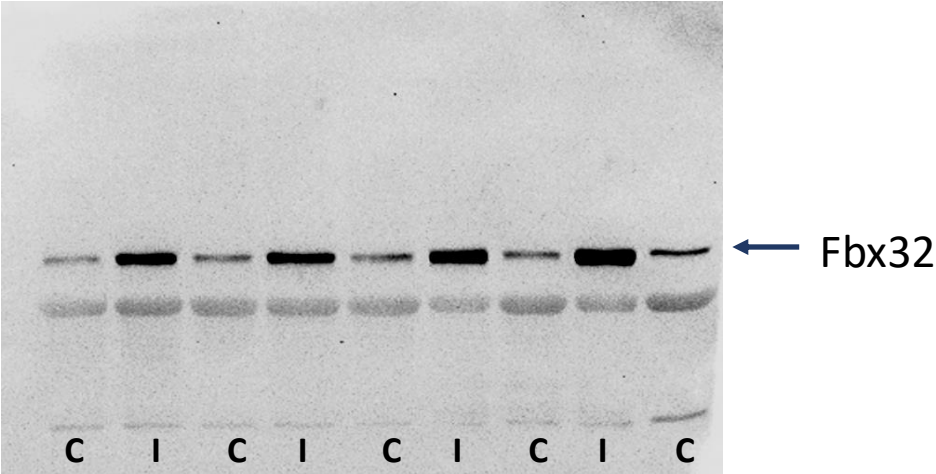


Original Western Blots (corresponding to Figure 7E in the main article). Chemiluminescence was detected using the Amersham ECL kit (Amersham, Buckingham, UK) and the Uvitec Alliance 6.7-01 Western Blot imaging system (Uvitec, Cambridge, UK).

Fbx-32 (Membrane A)



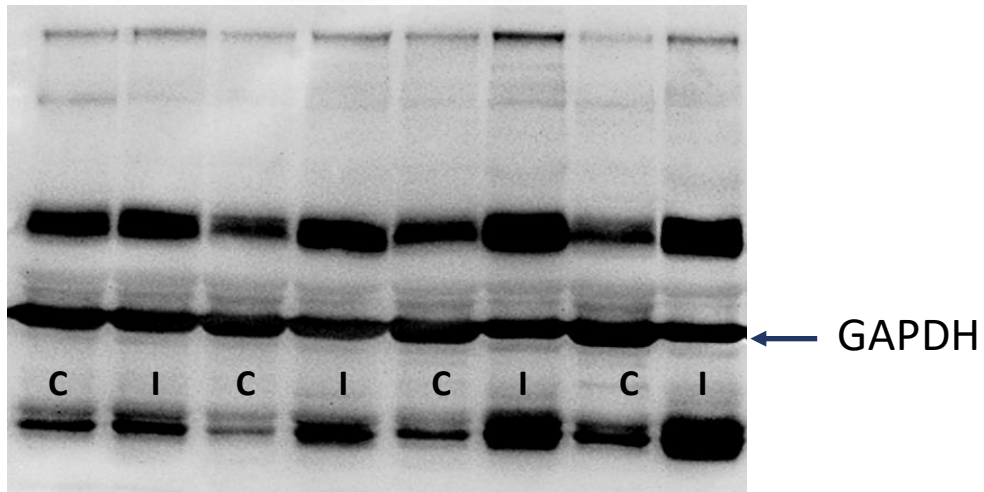
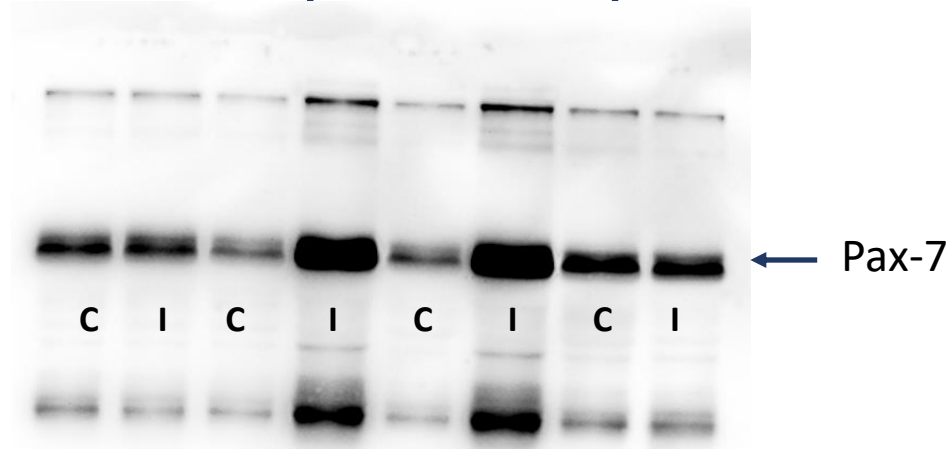
Fbx-32 (Membrane B)



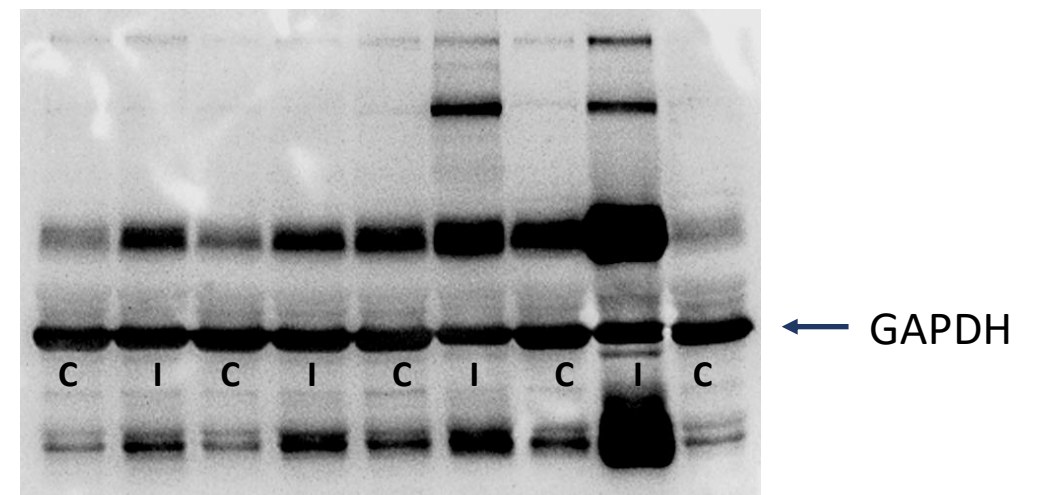
The top membranes were probed for Fbx32 (Antibody: Abcam Ab 168372; Dilution 1:1000), the lower membranes for GAPDH (Antibody: Abcam Ab 168372; Dilution 1:1000). Sample order is as shown at the bottom of the membrane (C=contra; I=Ipsi).

Original Western Blots (corresponding to Figure 7F in the main article). Chemiluminescence was detected using the Amersham ECL kit (Amersham, Buckingham, UK) and the Uvitec Alliance 6.7-01 Western Blot imaging system (Uvitec, Cambridge, UK).

**Pax-7 (Membrane A)**



**Pax-7 (Membrane B)**



The top membranes were probed for Pax-7 (Antibody Merk Millipore, MABD20; Dilution 1:1000), the lower membranes for GAPDH (Antibody: Abcam Ab181602 ; Dilution 1: 40.000). Sample order is as shown at the bottom of the membrane (C=contra; I=Ipsi).