

# **Supplementary Materials**

## **Intracellular conformation of amyotrophic lateral sclerosis-causative TDP-43**

**Akira Kitamura <sup>1,\*</sup>, Sachiko Yuno <sup>2</sup>, Rintaro Kawamura <sup>3</sup>, and Masataka Kinjo <sup>4</sup>**

<sup>1</sup> Laboratory of Molecular Cell Dynamics, Faculty of Advanced Life Science, Hokkaido University;  
PRIME, Japan Agency for Medical Research and Development

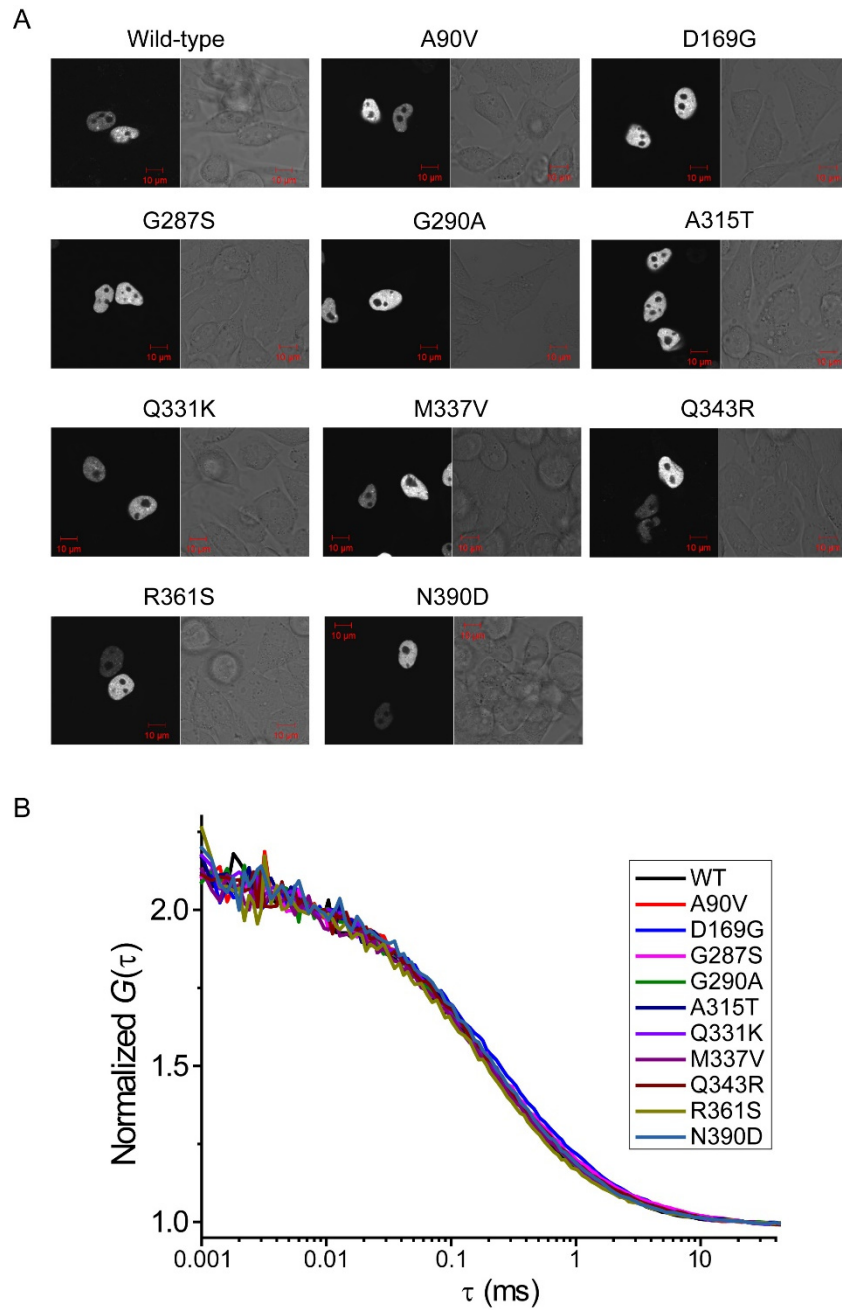
<sup>2</sup> Laboratory of Molecular Cell Dynamics, Graduate School of Life Science, Hokkaido University

<sup>3</sup> Laboratory of Molecular Cell Dynamics, Graduate School of Life Science, Hokkaido University

<sup>4</sup> Laboratory of Molecular Cell Dynamics, Faculty of Advanced Life Science, Hokkaido University

\* Correspondence: akita@sci.hokudai.ac.jp; Tel.: +81(11)-706-9006

**Figure S1**



**Figure S1 Subcellular localization and diffusion state of ALS-associated mutants of TDP-43 tagged with eGFP.**

(A) Confocal fluorescence images of eGFP-labeled wild-type and ALS-associated mutants of TDP-43. Alphabets and numbers indicate the one-letter symbol of the amino acid containing the mutation and the location of the amino acid residue. Bars = 10  $\mu$ m. (B) Normalized autocorrelation functions of eGFP-labeled wild-type (WT) and ALS-associated mutants of TDP-43 in cell lysates. No significant differences in the autocorrelation curve were observed.