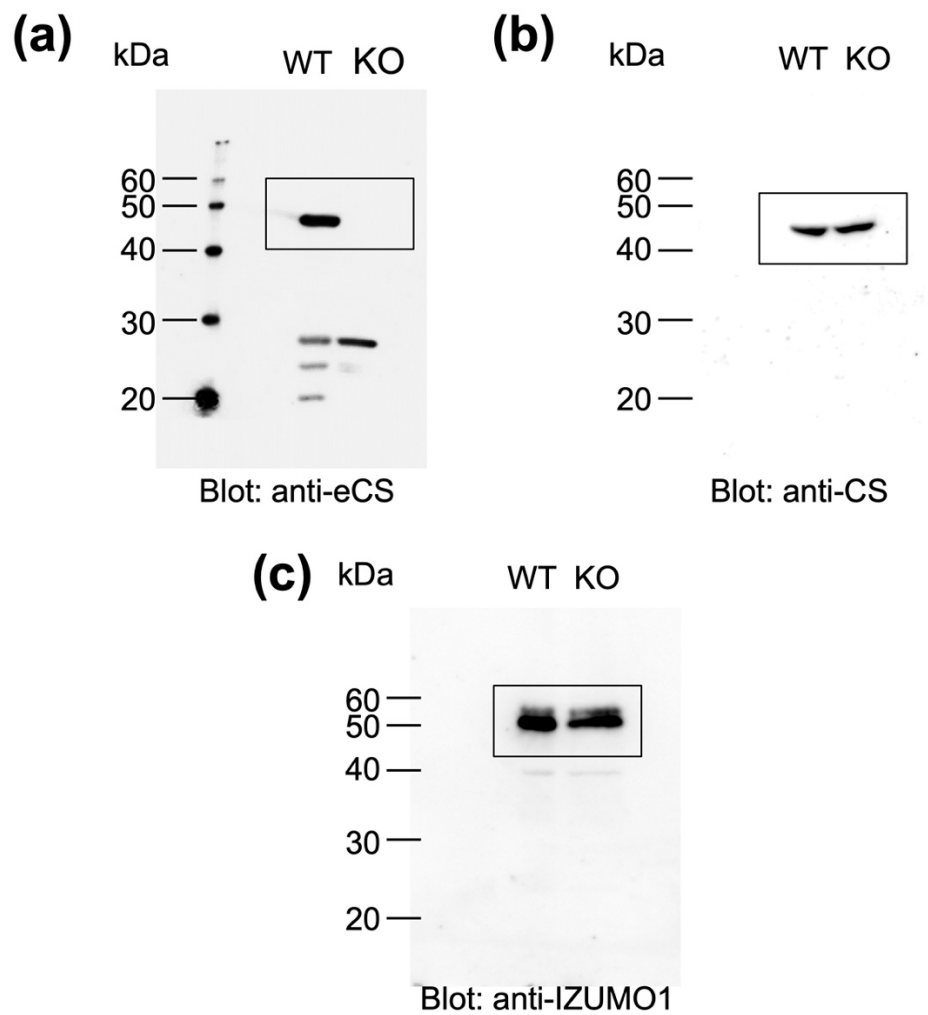
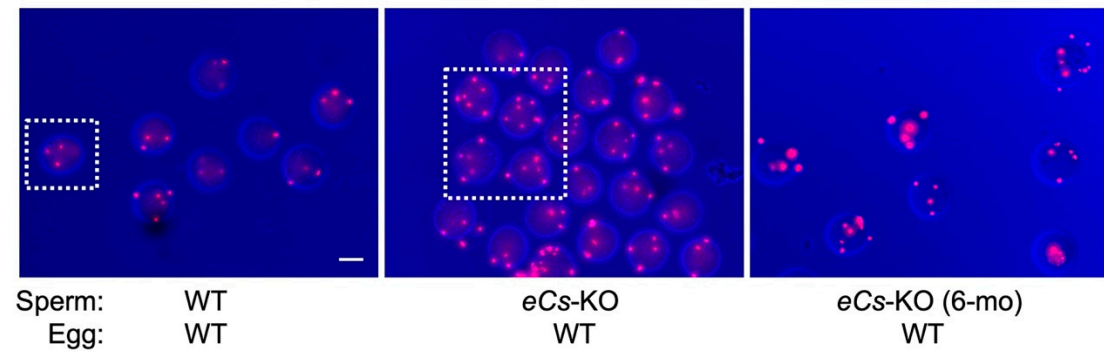


**Figure S1. Localization of CS and eCS fused with EGFP.** Red CMXRos. Green: CS and eCS fused with EGFP; red: mitochondria; blue: DAPI. Boxes were enlarged in Figure 1b. Scale bars: 10  $\mu\text{m}$ .



**Figure S2. Immunoblotting of sperm with anti-IZUMO1, CS and eCS Abs.** Boxes were shown in Figure 4d.



**Figure S3. Polyspermic eggs.** Boxes were enlarged in Figure 5b. Scale bar: 50  $\mu$ m.