

Supplementary Information

The effect of commercially available medical cannabis oils on obesity parameters and microbiota composition

Adi Eitan, Ofer Gover, Liron Sulimani, David Meiri, Naama Shterzer , Erez Mills, and Betty Schwartz

Table S1: Fatty acid composition of the STD and HFD used in this study

	HFD	STD
Total fat (g/kg)	342.7	62
Saturated fat (g/kg)	119.2	0.63
C14:0 myristic	3.1	-
C16:0 Palmitic	74.6	0.49
C18:0 Stearic	41.5	0.14
Monounsaturated fat (g/kg)	134	9.1
C16:1 Palmitoleic	6.2	-
C18:1 Oleic	127.8	8.4
Polyunsaturated fat (g/kg)	77.2	23.8
C18:2 Linoleic	71.7	21.7
C18:3 Linolenic	5.5	0.21
ω 6: ω 3 ration	13	10

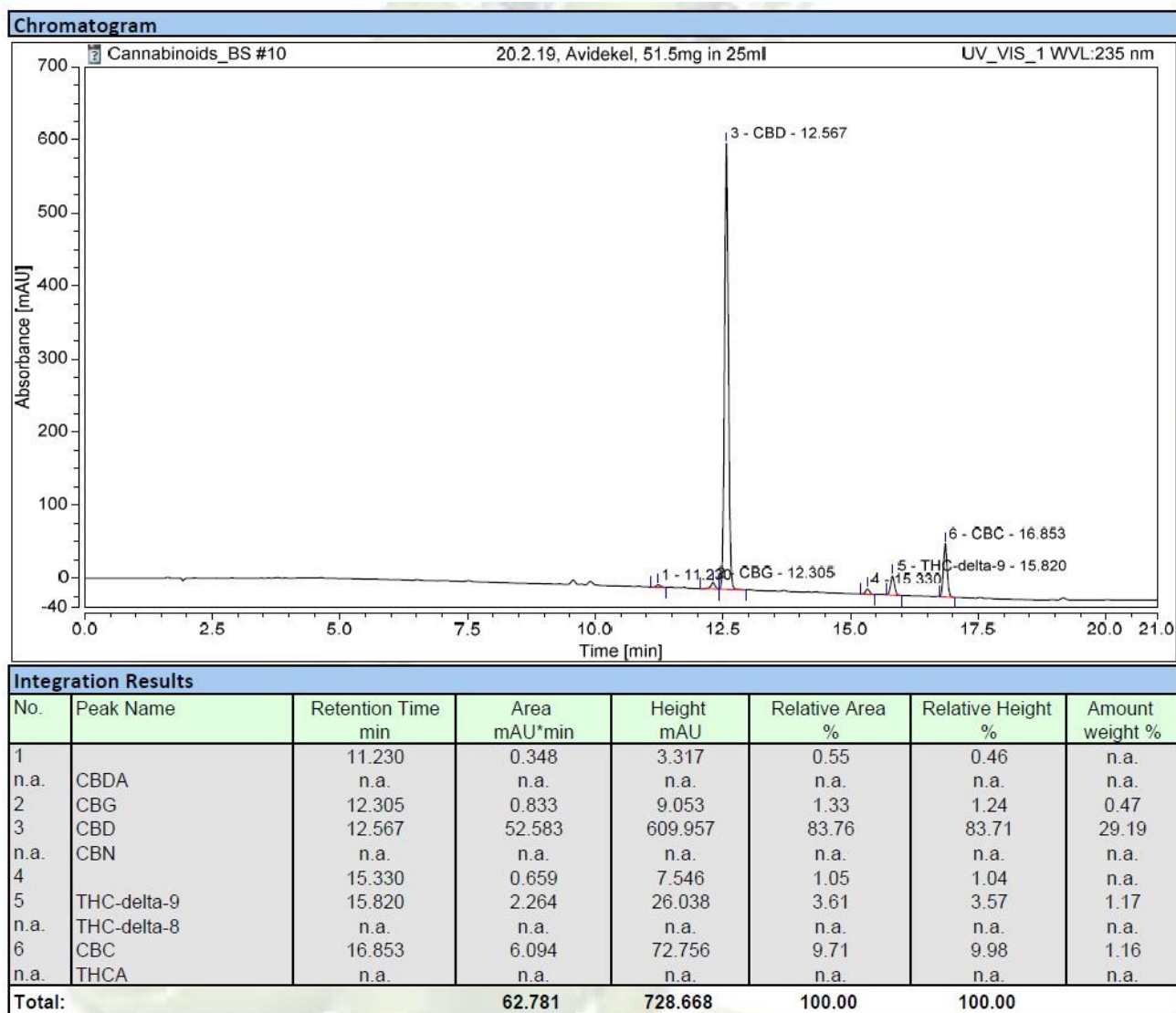


Figure S1. Chromatogram of Avidekel extract. Phytocannabinoid profiling of Avidekel oil extract was performed according to the method described in the materials and method section.

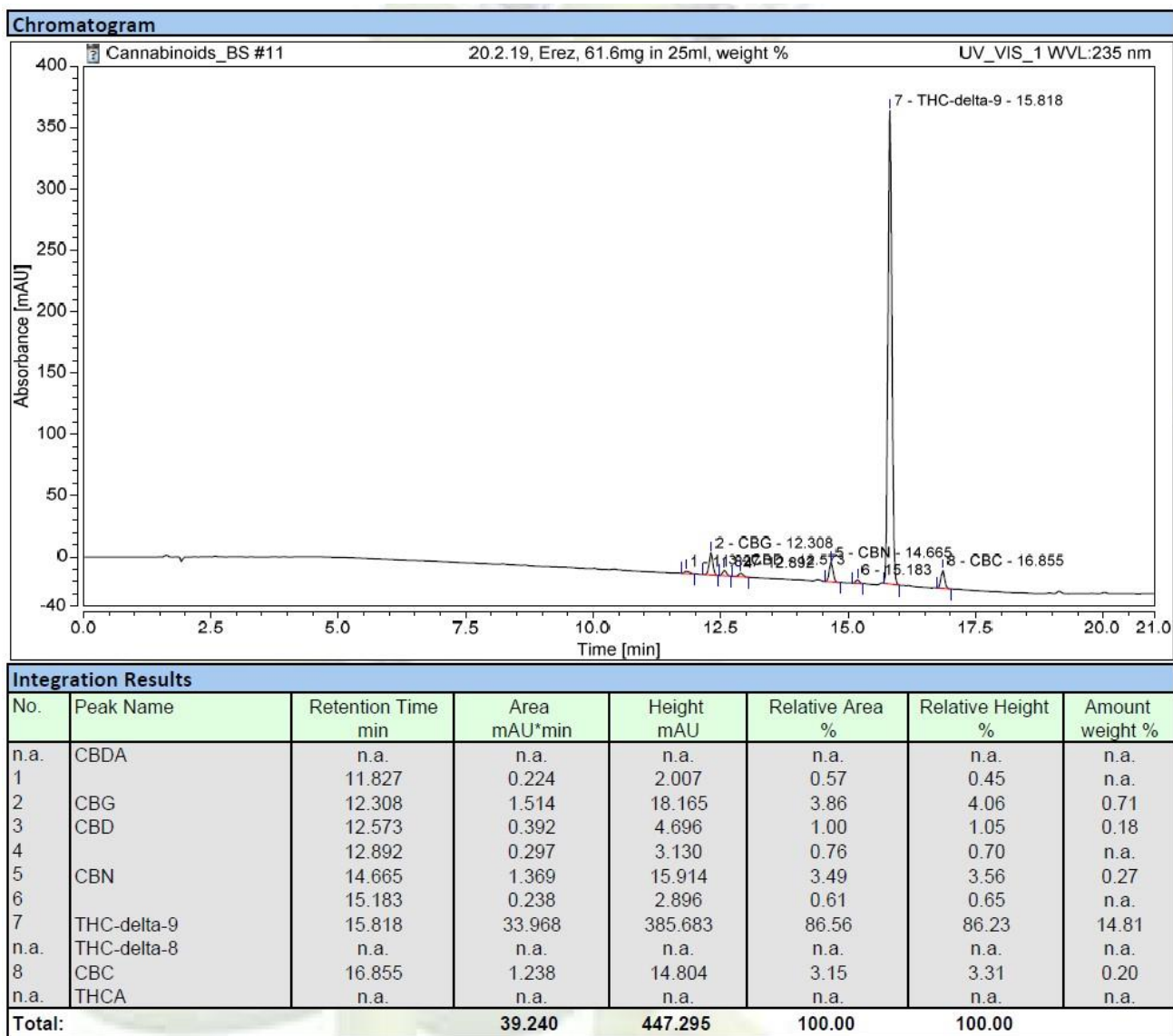


Figure S2. Chromatogram of Erez extract. Phytocannabinoid profiling of Erez oil extract was performed according to the method described in the materials and method section.

Table S2: Terpenes assayed by GC-FID - Avidekel extract

Test	mg/g	% Total Terpenes
Terpenes Assay By GC-FID		
<i>α-pinene</i>	0.02	0.3
<i>Camphene</i>	0.00	0.0
<i>Myrcene</i>	1.98	28.4
<i>β-Pinene</i>	0.05	0.7
<i>d-Limonene</i>	0.90	12.9
<i>β-ocimene</i>	0.17	2.4
<i>Eucalyptol</i>	0.32	4.6
<i>γ-Terpinene</i>	0.06	0.9
<i>Terpinolene</i>	0.19	2.8
<i>Linalool</i>	1.24	17.8
<i>Geraniol</i>	0.00	0.0
<i>β-Caryophyllene</i>	1.67	24.0
<i>α-Humulene</i>	0.37	5.3
<i>Nerolidol</i>	0.00	0.0
<i>α-Bisabolol</i>	0.00	0.0
Total	6.97	100

Table S3: Terpenes assayed by GC-FID - Erez extract

Test	mg/g	% Total Terpenes
Terpenes Assay By GC-FID		
<i>α-pinene</i>	0.01	0.2
<i>Camphene</i>	0.00	0.0
<i>Myrcene</i>	0.13	3.0
<i>β-Pinene</i>	0.03	0.6
<i>d-Limonene</i>	0.12	2.8
<i>β-ocimene</i>	0.12	2.6
<i>Eucalyptol</i>	0.00	0.0
<i>γ-Terpinene</i>	0.04	0.9
<i>Terpinolene</i>	0.17	3.9
<i>Linalool</i>	0.56	12.5
<i>Geraniol</i>	0.00	0.0
<i>β-Caryophyllene</i>	2.51	56.3
<i>α-Humulene</i>	0.77	17.2
<i>Nerolidol</i>	0.00	0.0
<i>α-Bisabolol</i>	0.00	0.0
Total	4.46	100

Table S4: Primer list

Gene	Forward primer	Accession number
	Reverse primer	
F4/80	CCTTTGGCTATGGGCTTCCA	NM_001355722.1
	CCTCAGAACCCACAGTGTCC	
CD14	CTGAAGCCTTTCTCGGAGCC	NM_009841.4
	GCATAAGCTTCATGGTCGGTAGA	
INF- γ	AGCGCCAAGCATTCAATGAG	NM_008337.4
	AATCTCTTCCCCACCCCGAA	
IL-1 β	TCGCTCAGGGTCACAAGAAA	NM_008361.4
	CATCAGAGGCAAGGAGGAAAAC	