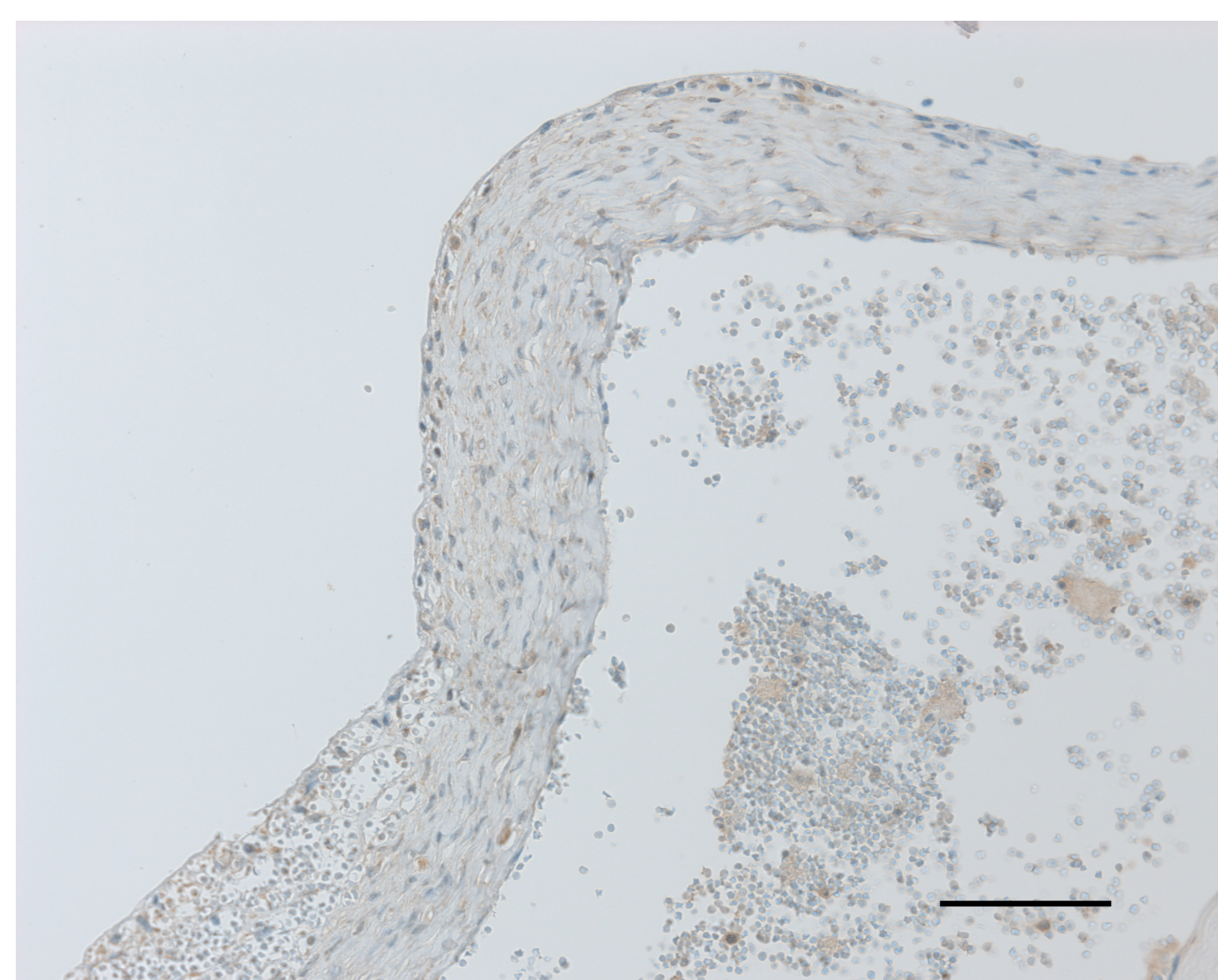
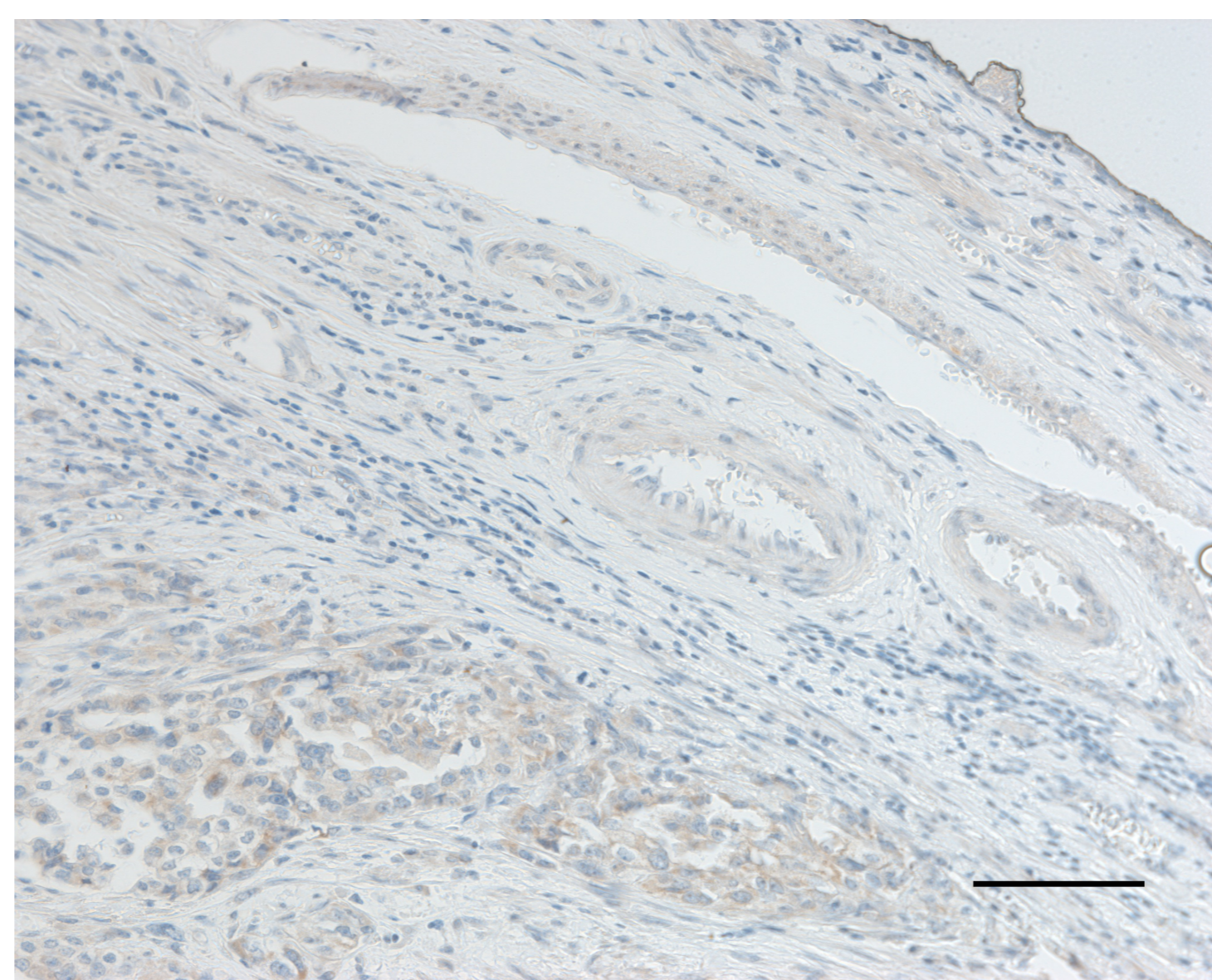


A

Normal ovarian epithelial

B

Tumor and stroma

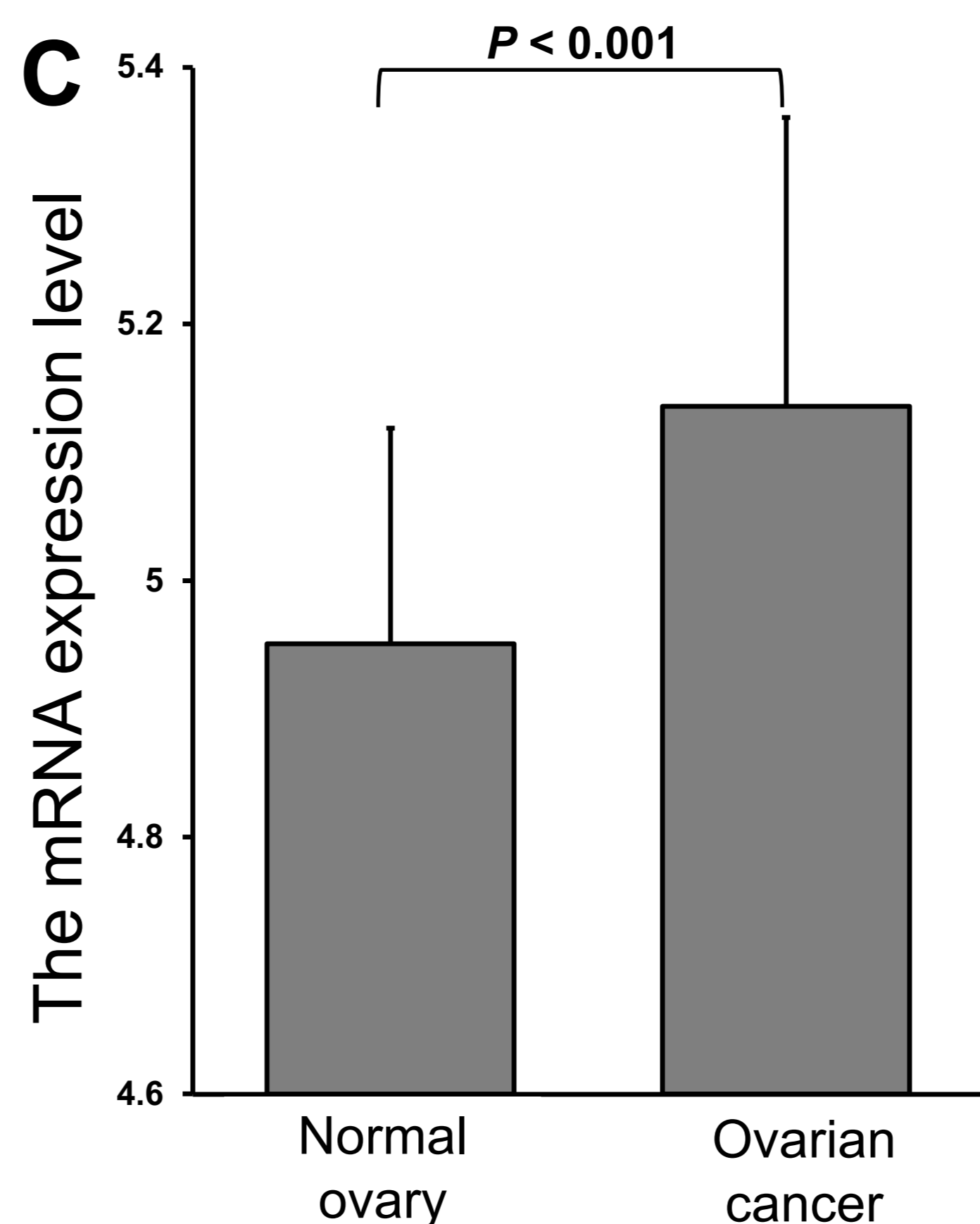
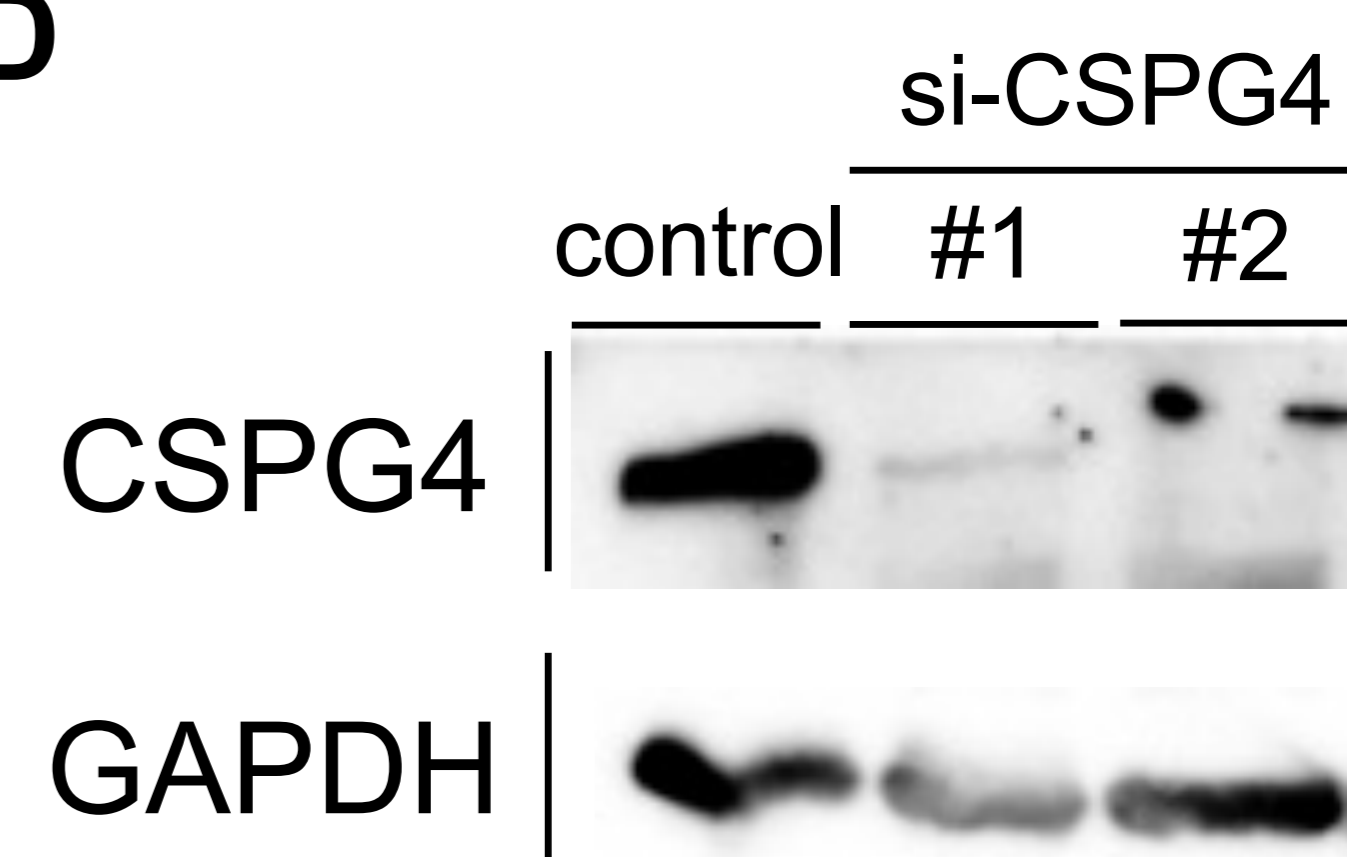
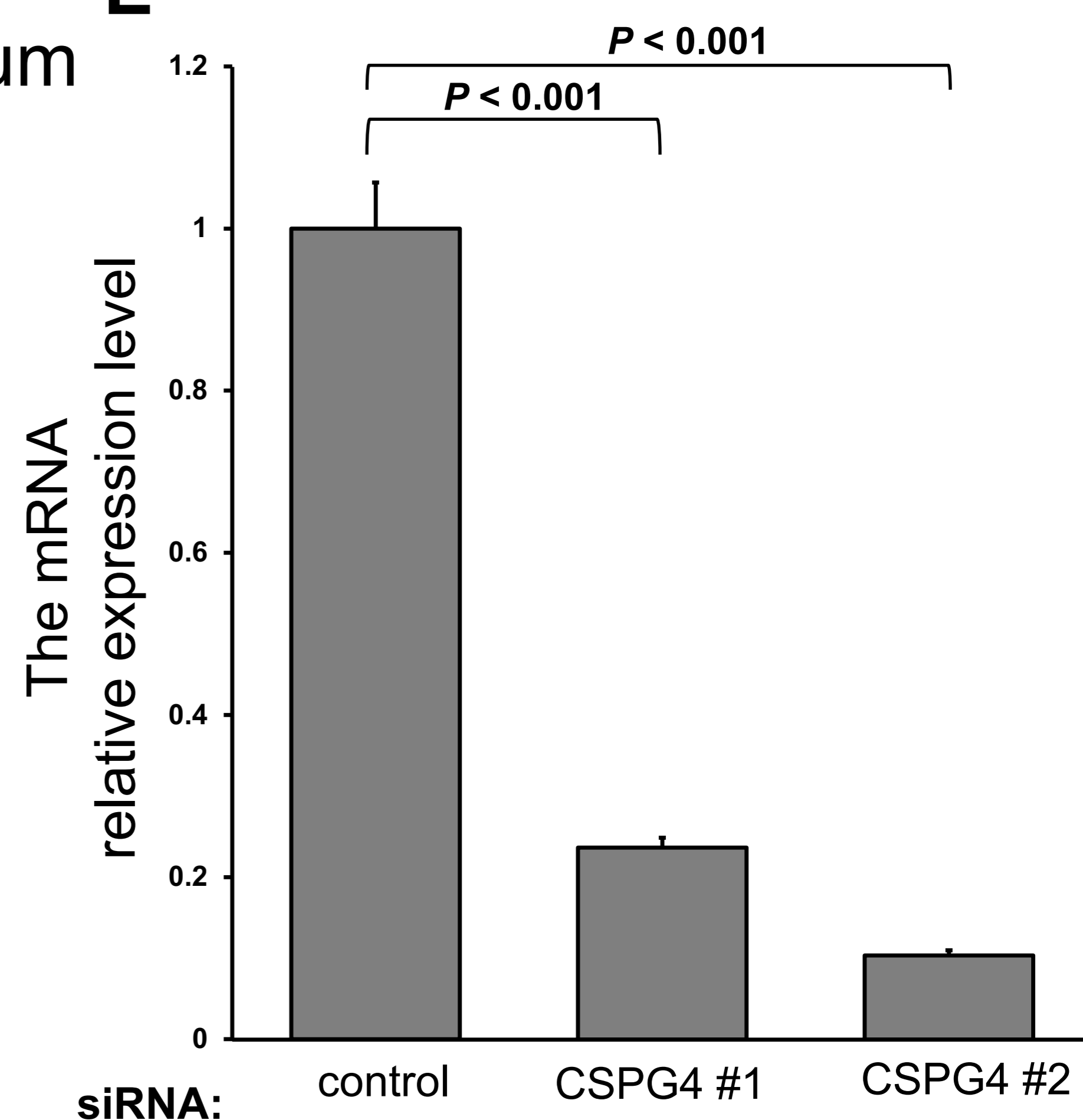
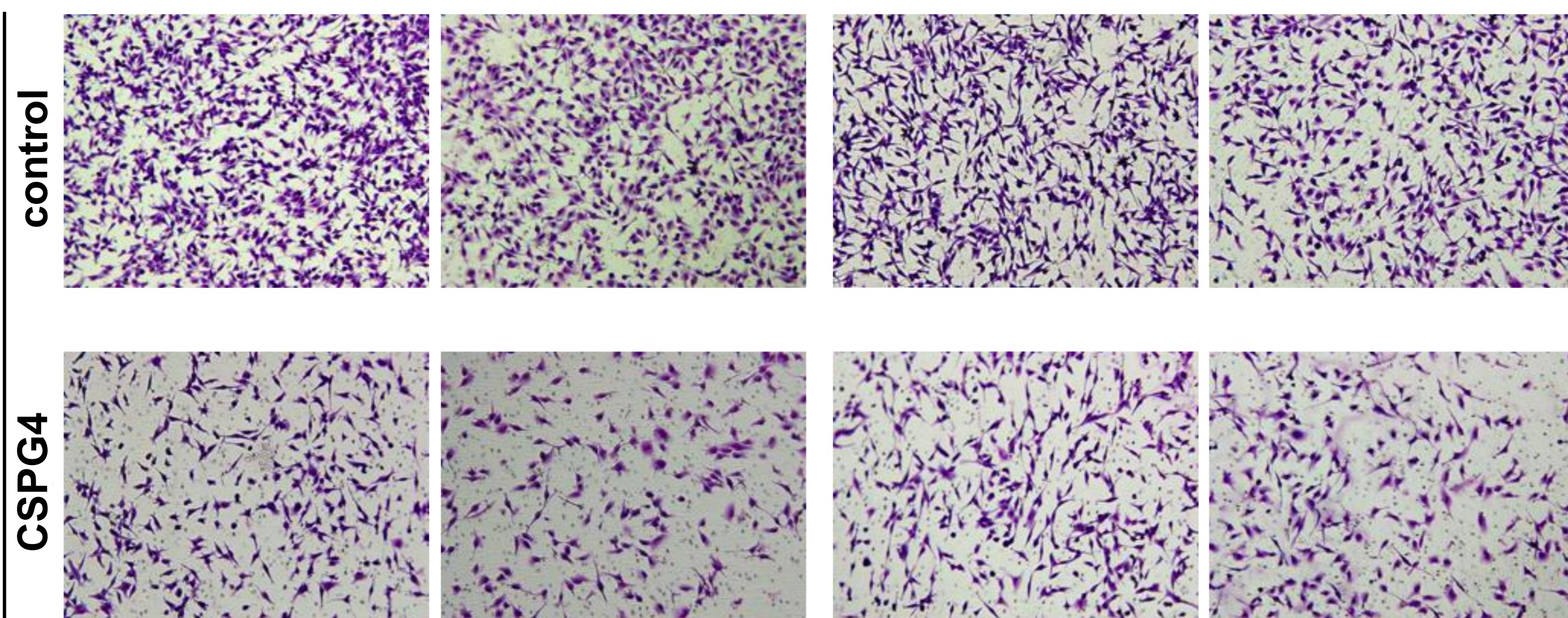
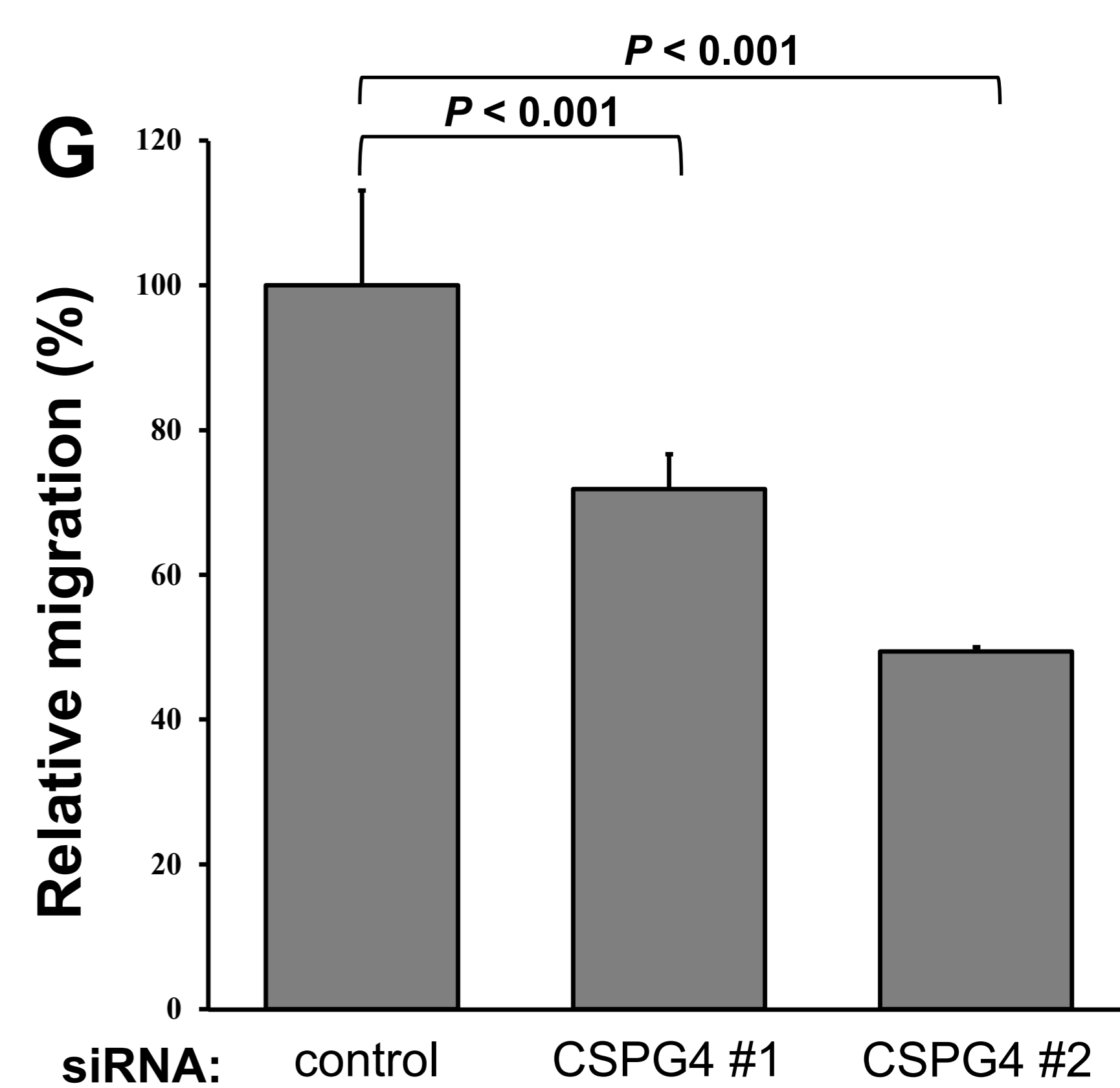
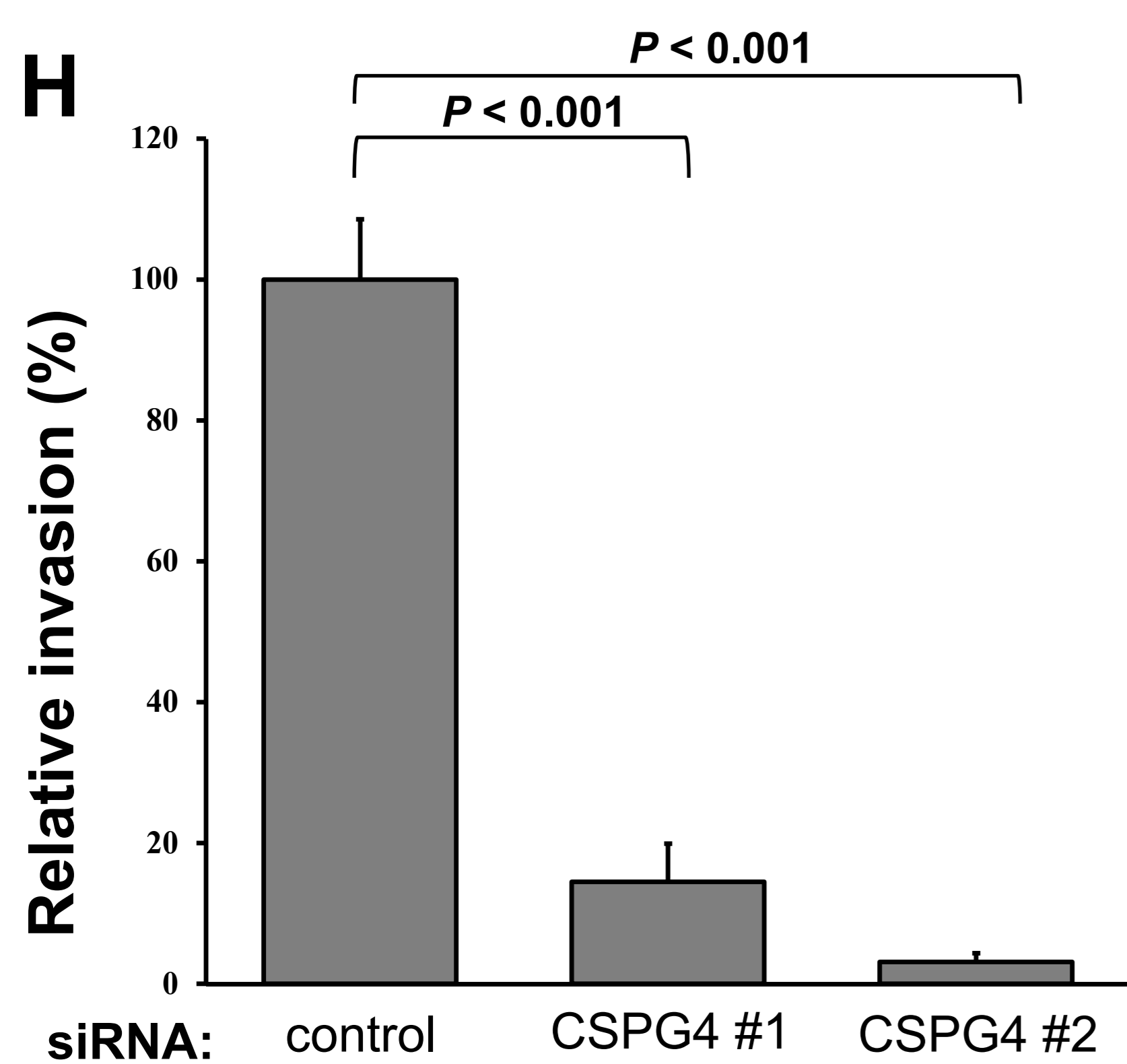
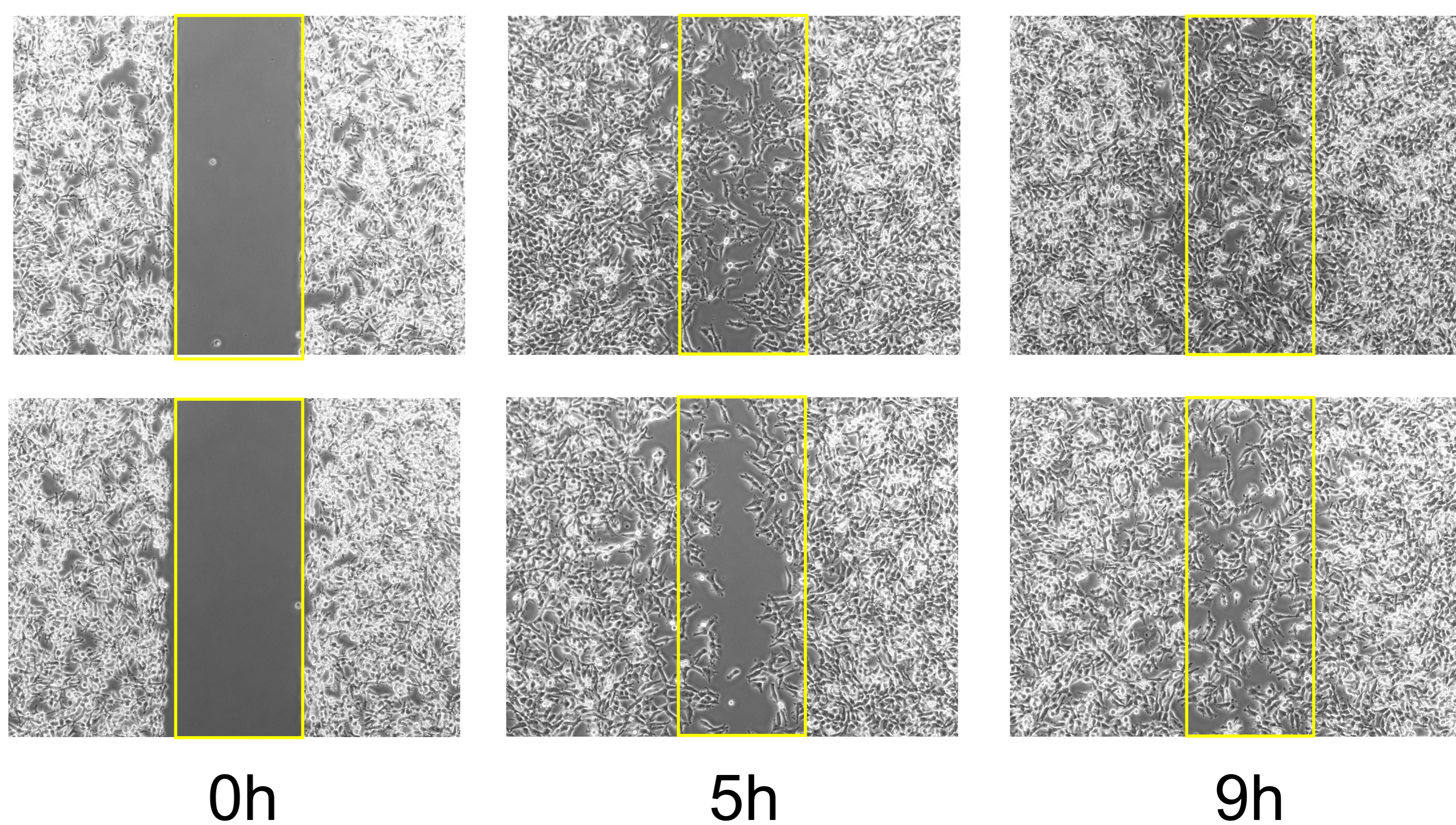
C**D****E****F****ES2****NOE****Migration****Invasion****Migration****Invasion****G****H****I****control****antiCSPG4**

Figure S1. Downregulation of CSPG4 affects invasion, migration, and wound healing abilities in EOC cells

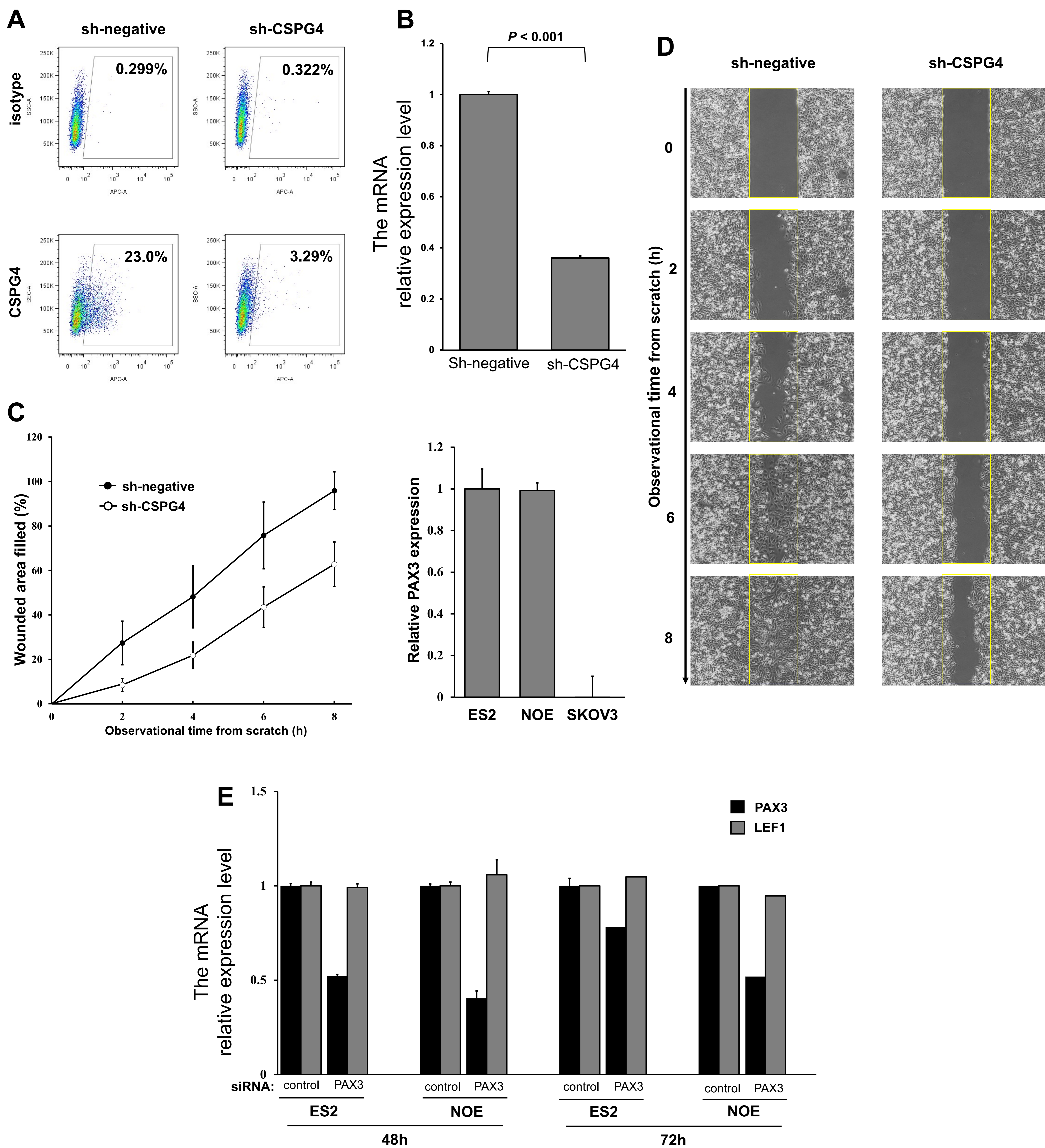


Figure S2. Decreased wound healing ability with sh-CSPG4.

Table S1. Patient backgrounds

Characteristics	All patients (n = 52)
Age in years, median \pm SD (range)	50 \pm 9.2 (26–64)
FIGO tumor stage	
II, n (%)	5 (9.6%)
III, n (%)	47 (90.4%)
Pathology	
Endometrioid carcinoma, G1, n (%)	1 (1.9%)
Endometrioid carcinoma, G2, n (%)	1 (1.9%)
Endometrioid carcinoma, G3, n (%)	1 (1.9%)
High grade Serous carcinoma, n (%)	39 (75.0%)
Mucinous rcinoma, n (%)	2 (3.8%)
Clear cell carcinoma, n (%)	8 (15.4%)
Neo-adjuvant chemotherapy, n (%)	8 (15.4%)

SD, standard deviation; FIGO, International Federation of Gynecology and Obstetrics; G, grade.

Table S2.

Primers	Target gene	primer	Primer sequence (5' to 3')
	<i>cspg4</i>	CSPG4-Fw CSPG4-Rev	TGGCCTTCACTGTCACTGTCCTG CAGAGCCTCCGCAGGGATGG
	<i>gapdh</i>	GAPDH-Fw GAPDH-Rev	CATGTTTCGTCATGGGTGTGAACCA AGTGATGGCATGGACTGTGGTCAT
	<i>pax3</i>	PAX3-Fw PAX3-Rev	GCTCCATACGTCCTGGTGCCAT TCTTCTCCACGTCAGGCGTTGTC
	<i>lef1</i>	LEF1-Fw LEF1-Rev	CCCCGATGACGGAAAGCATC TGTTCTCGGGATGGGTGGAGAA
	<i>fn1</i>	FN1-Fw FN1-Rev	TGTACCATCGCAAACCGCTGCC TGGGCTTGCAGGTCCATTCTCCT

siRNAs	Target gene	siRNA	Target sequence (5' to 3')
	non-targeted	control	TTCTCCGAACGTGTCACGT
	<i>cspg4</i>	CSPG4 #1	CCAGGTCAACCCTGTCAAT
		CSPG4 #2	GCCGTTCTCTATAGCCACA
	<i>lef1</i>	LEF1 #1	GCGATTTAGCTGACATCAA
		LEF1 #2	GCTACATATGCAGCTTTAT

shRNAs	Target gene	shRNA	Target sequence (5' to 3')
	non-targeted	control	TTCTCCGAACGTGTCACGT
	<i>cspg4</i>	CSPG4-7623	TGGCTTTGACCCTGACTATGTTG