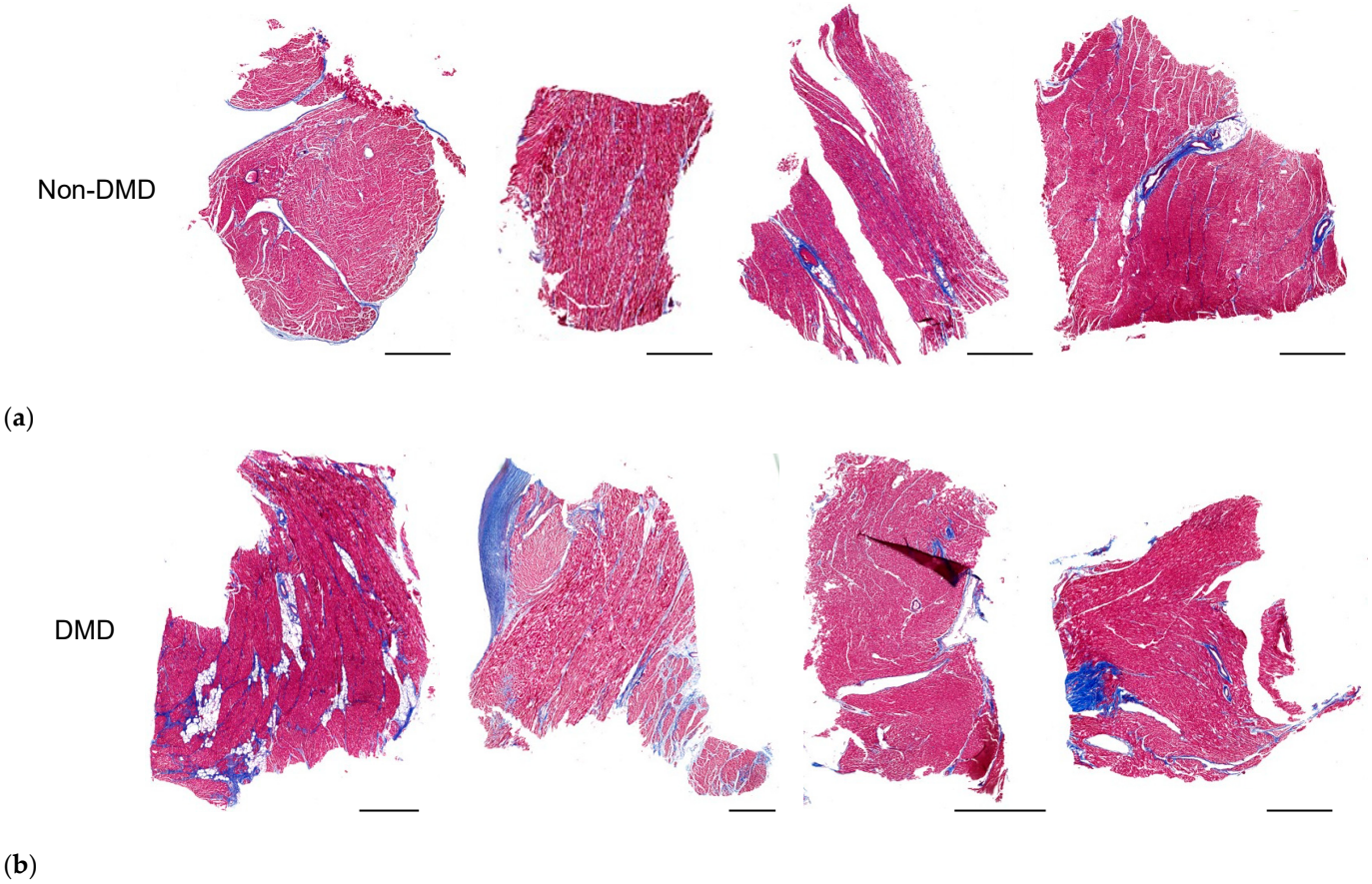
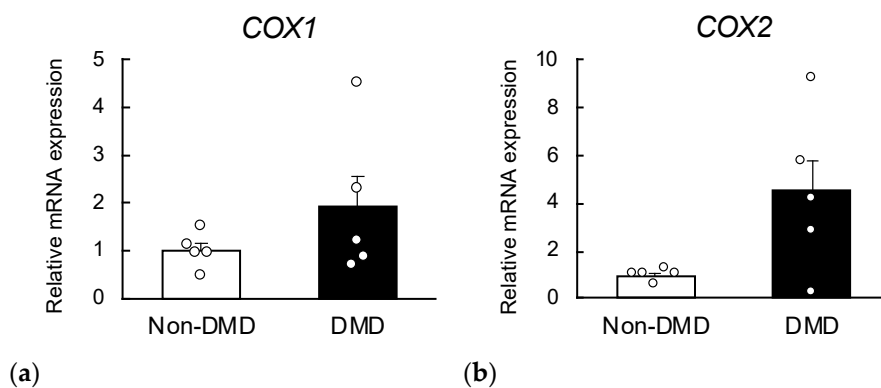


Supplementary Table S1. Primer sets for Quantitative RT-PCR analysis of gene expression.

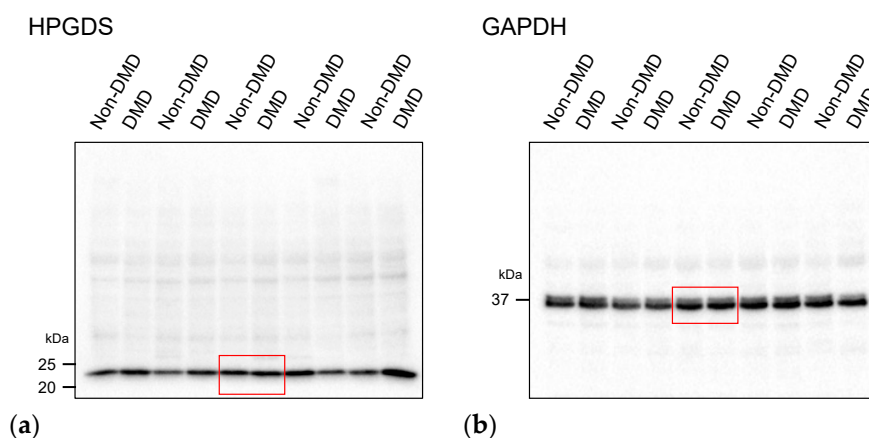
Gene		Sequence
HPGDS	Forward	5'-TCTTCACCAGAGCCTAGCAAT-3'
	Reverse	5'-AAGTCTGCCCAAGTTACAGAGTT-3'
COX1	Forward	5'-GGAGTTCTACCCTGGACTGC-3'
	Reverse	5'-AGACCAGCTTCTTCAGTGTG-3'
COX2	Forward	5'-CCCAGCACTTCACGCATCAG-3'
	Reverse	5'-CGCTGTCTAGCCAGAGTTTC-3'
GAPDH	Forward	5'-GTCTCCTCTGACTTCAACAGCG-3'
	Reverse	5'-ACCACCCTGTTGCTGTAGCCAA-3'



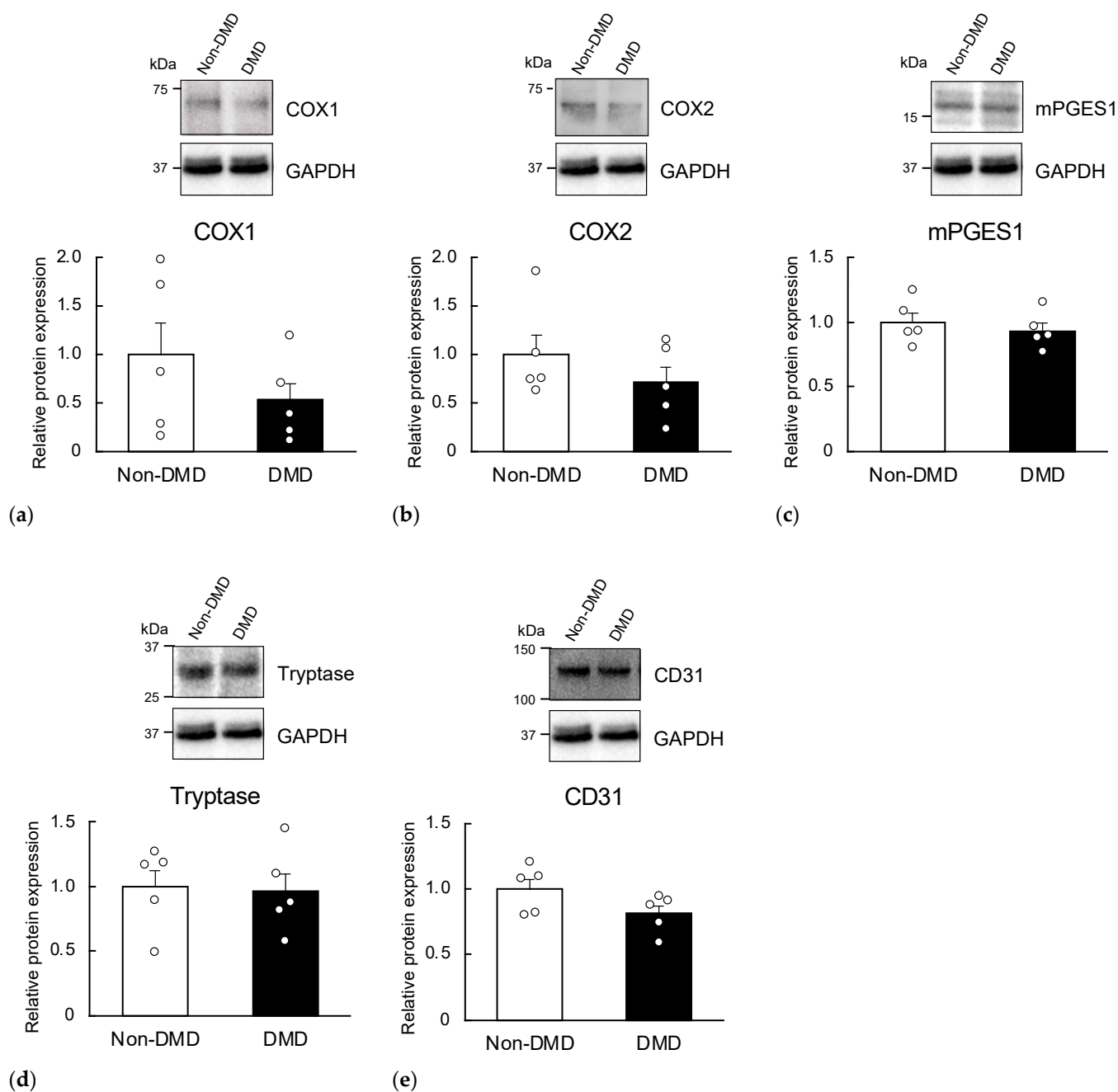
Supplementary Figure S1. Masson's trichrome stain images of autopsy myocardial specimens obtained from non-DMD (a) and DMD patients (b). The scale bar indicates 1,000 μm.



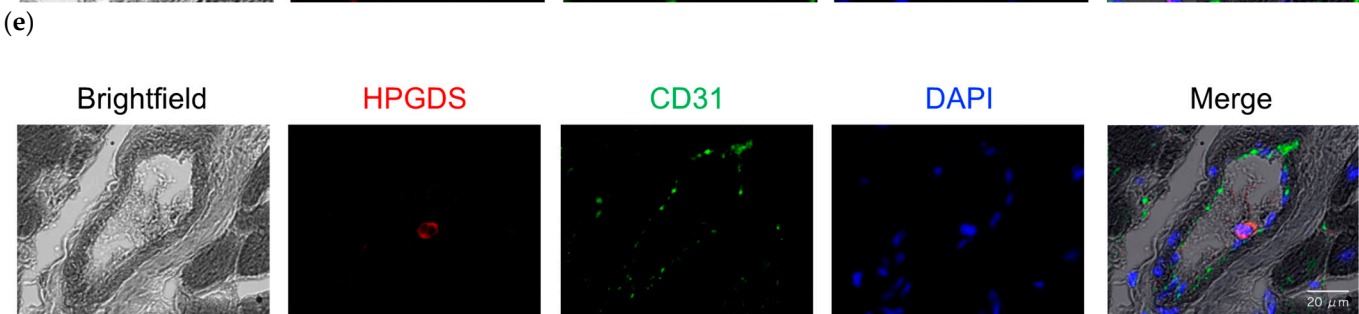
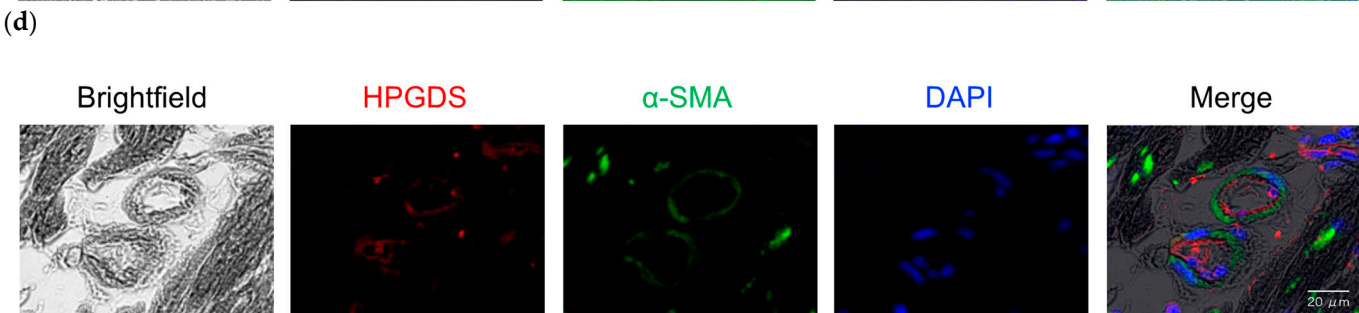
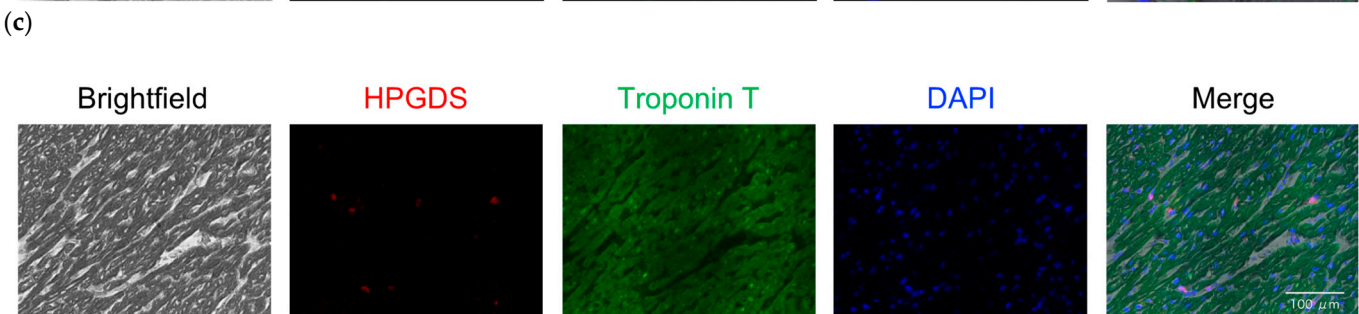
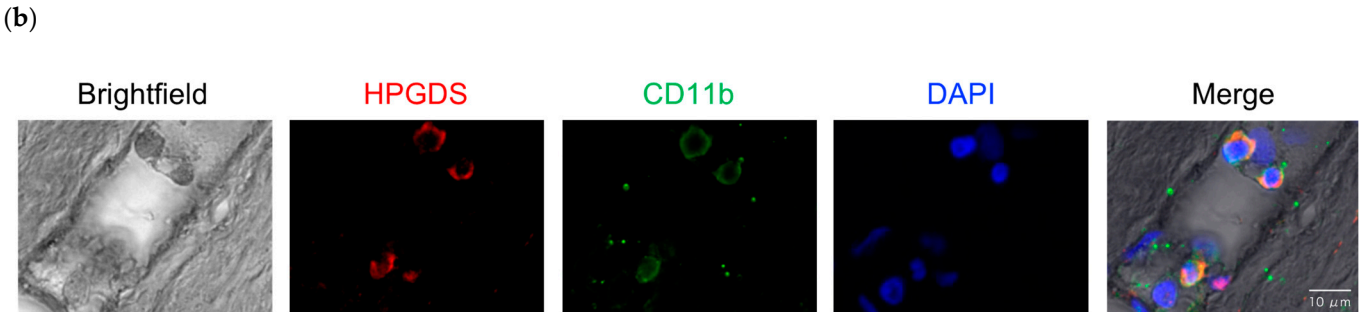
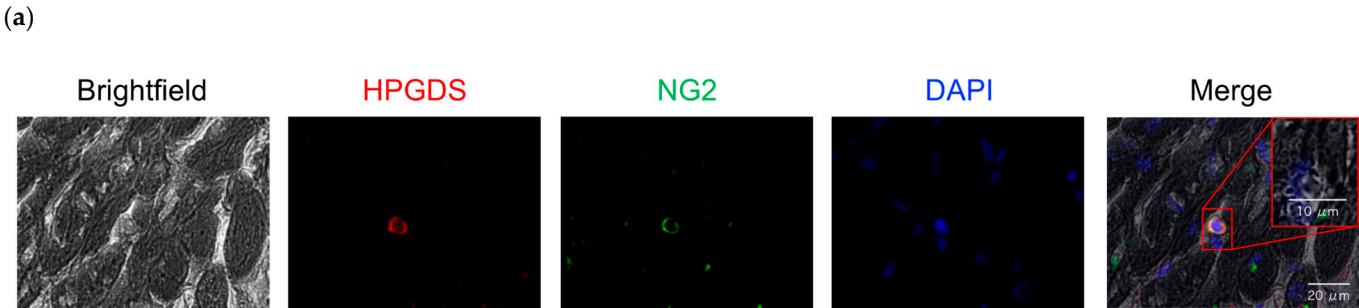
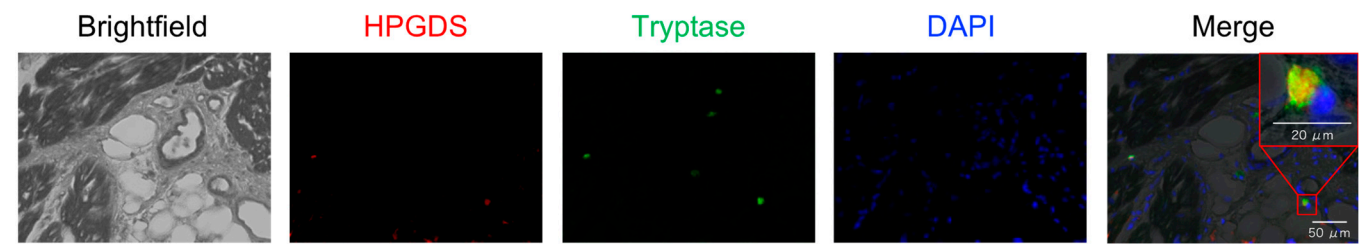
Supplementary Figure S2. Comparison of *COX1* (a) and *COX2* (b) mRNA expression levels in the autopsy myocardial specimens obtained from non-DMD and DMD patients. In all panels, each value represents the mean ± S.E. (n = 5). There were no significant differences between the two groups (unpaired Student's t test).



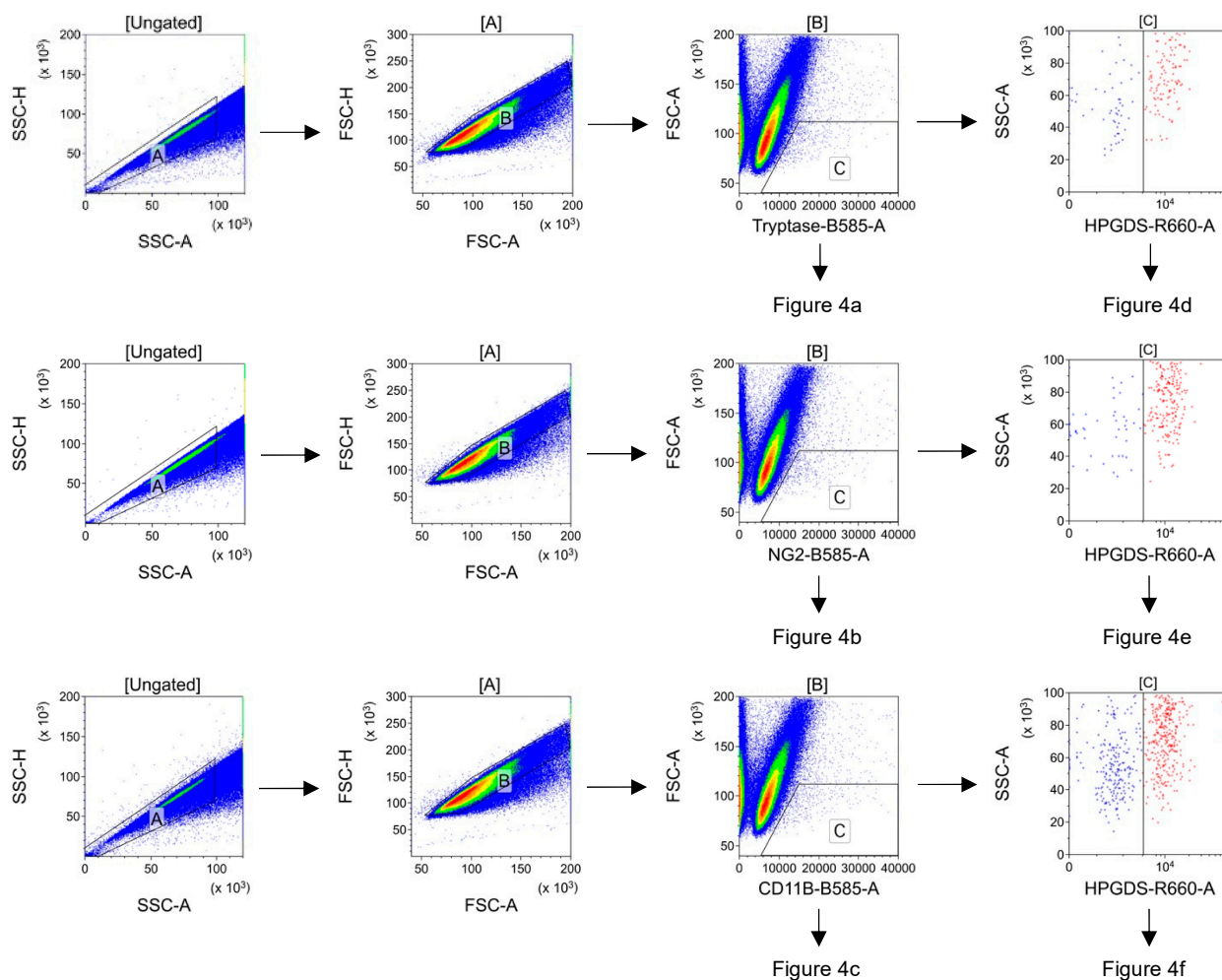
Supplementary Figure S3. Western blotting images of HPGDS (a) and GAPDH (b) proteins extracted from the autopsy myocardial specimens of non-DMD and DMD patients. The parts boxed in red were trimmed and used in Figure 2B.



Supplementary Figure S4. Comparison of COX1 (a), COX2 (b), mPGES1 (c), Tryptase (d), and CD31 (e) protein expression levels in the autopsy myocardial specimens obtained from non-DMD and DMD patients. In all panels, each value is the mean \pm S.E. ($n = 5$). There were no significant differences between the two groups (unpaired Student's t test).



Supplementary Figure S5. Representative images without superimposition of fluorescent immunostaining to identify HPGDS-expressing cells in the autopsy myocardial specimens obtained from DMD patients. All images have the same settings for HPGDS (red), DAPI (blue), and Bright-field, for green: Tryptase (a), NG2 (b), CD11b (c), Troponin T (d), α -SMA (e), and CD31 (f). Each merged image was used in Figure 2B. The scale bars are indicated on each image.



Supplementary Figure S6. Gating strategies used for flow cytometry analysis in Figure 4.