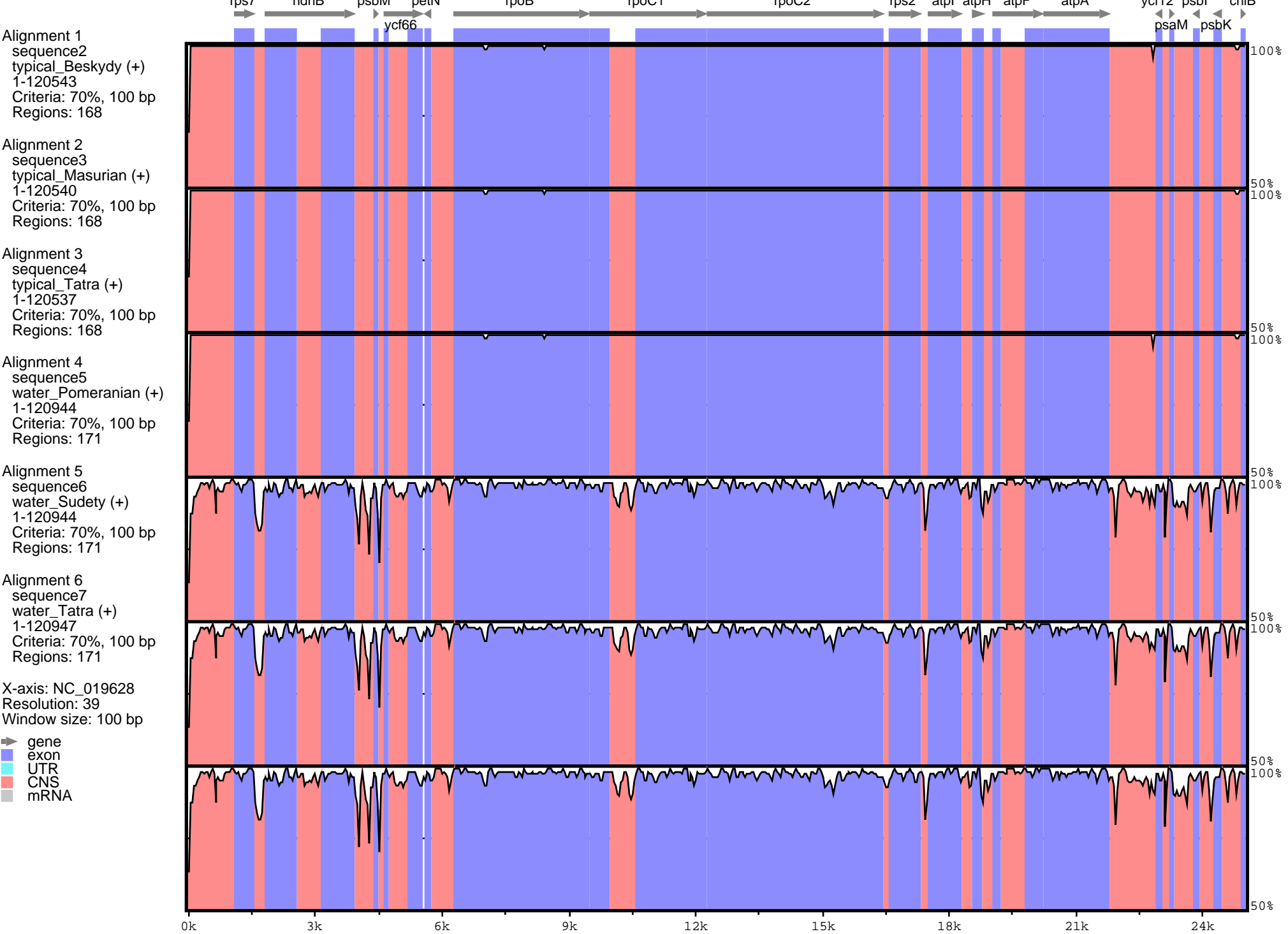
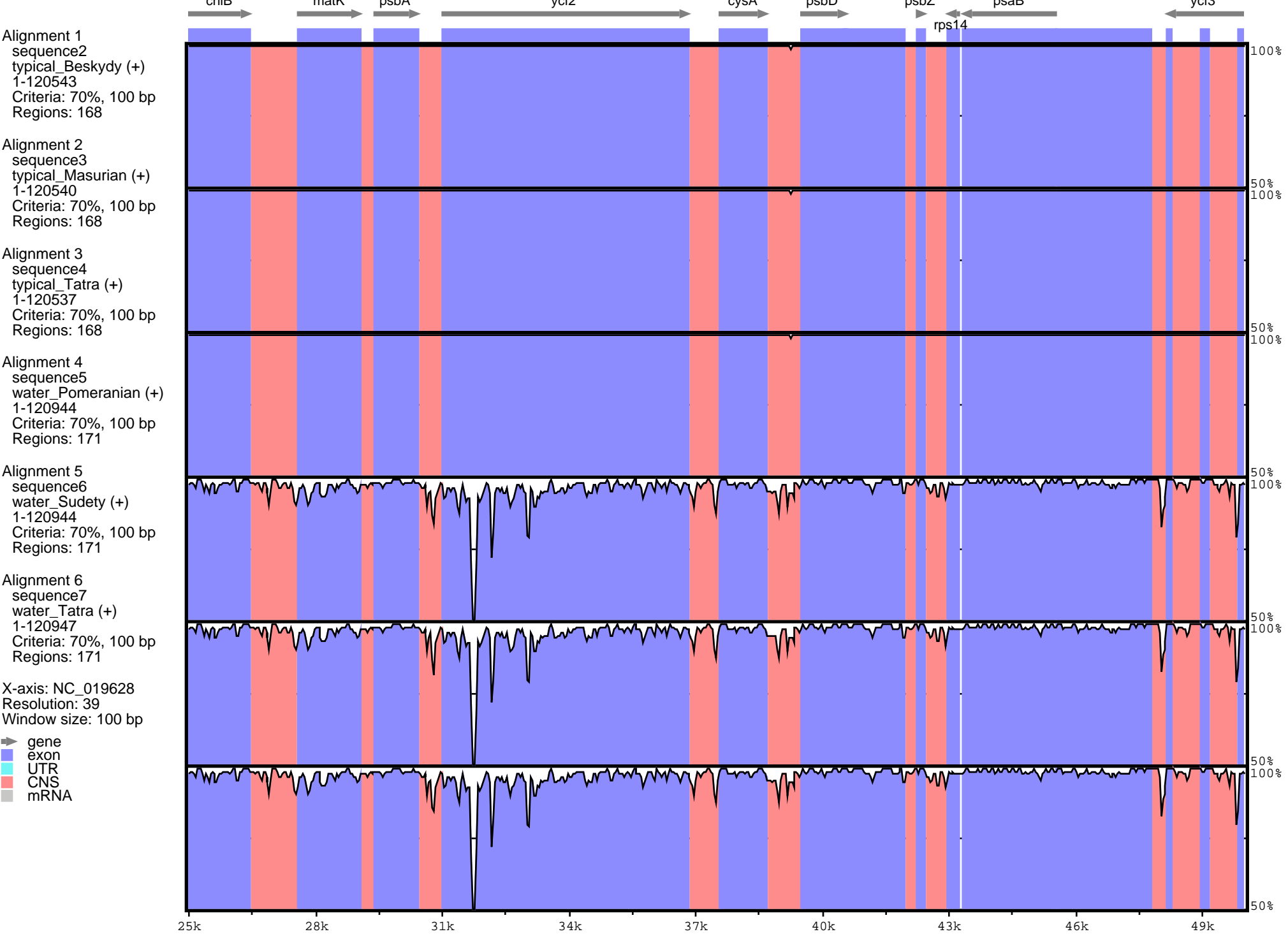


NC_019628 NC_019628:1-120546



NC_019628 NC_019628:1-120546



NC_019628 NC_019628:1-120546

Alignment 1
sequence2
typical_Beskydy (+)
1-120543
Criteria: 70%, 100 bp
Regions: 168

Alignment 2
sequence3
typical_Masurian (+)
1-120540
Criteria: 70%, 100 bp
Regions: 168

Alignment 3
sequence4
typical_Tatra (+)
1-120537
Criteria: 70%, 100 bp
Regions: 168

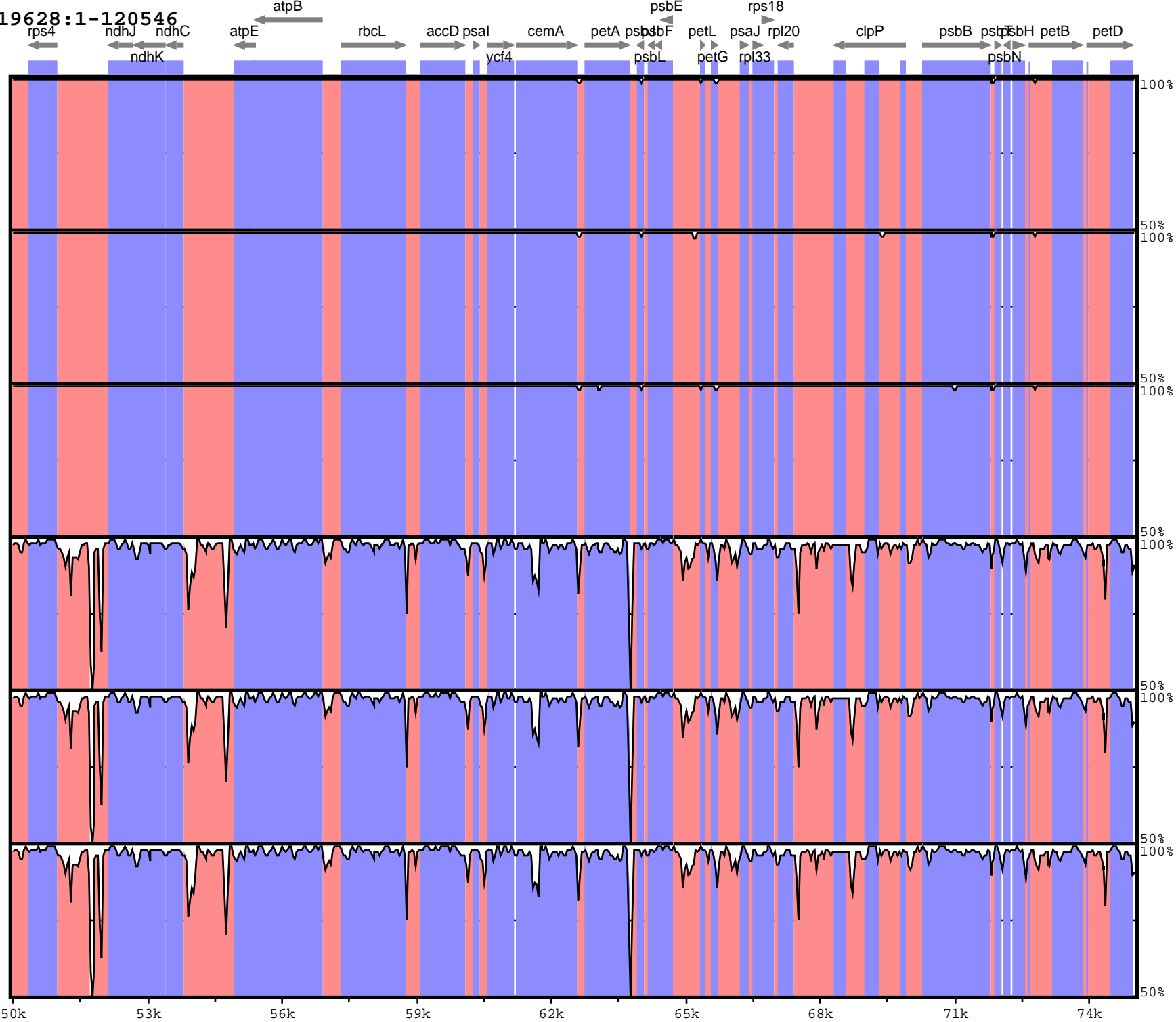
Alignment 4
sequence5
water_Pomeranian (+)
1-120944
Criteria: 70%, 100 bp
Regions: 171

Alignment 5
sequence6
water_Sudety (+)
1-120944
Criteria: 70%, 100 bp
Regions: 171

Alignment 6
sequence7
water_Tatra (+)
1-120947
Criteria: 70%, 100 bp
Regions: 171

X-axis: NC_019628
Resolution: 39
Window size: 100 bp

► gene
■ exon
■ UTR
■ CNS
■ mRNA



NC_019628 NC_019628:1-120546

Alignment 1
sequence2
typical_Beskydy (+)
1-120543
Criteria: 70%, 100 bp
Regions: 168

Alignment 2
sequence3
typical_Masurian (+)
1-120540
Criteria: 70%, 100 bp
Regions: 168

Alignment 3
sequence4
typical_Tatra (+)
1-120537
Criteria: 70%, 100 bp
Regions: 168

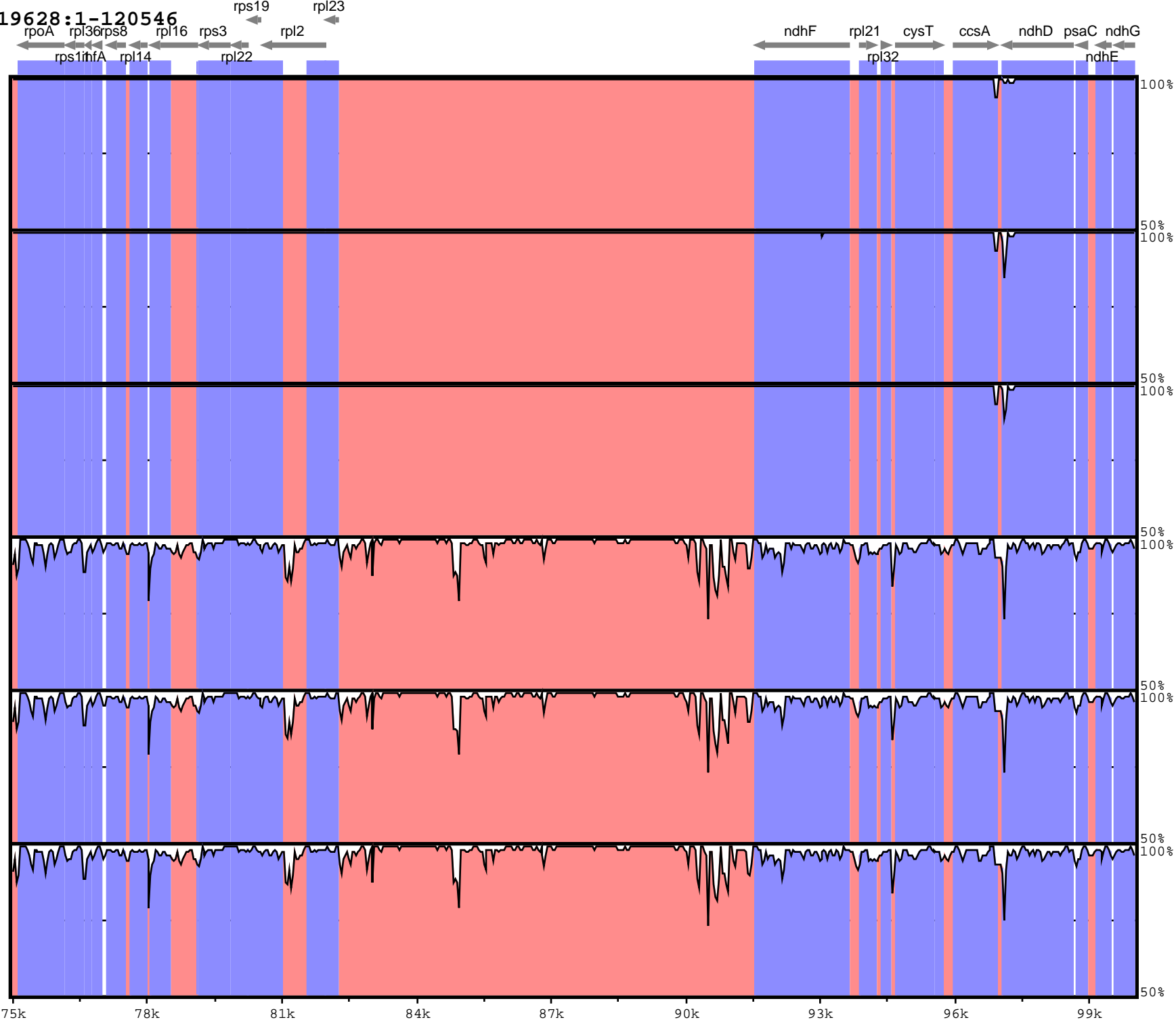
Alignment 4
sequence5
water_Pomeranian (+)
1-120944
Criteria: 70%, 100 bp
Regions: 171

Alignment 5
sequence6
water_Sudety (+)
1-120944
Criteria: 70%, 100 bp
Regions: 171

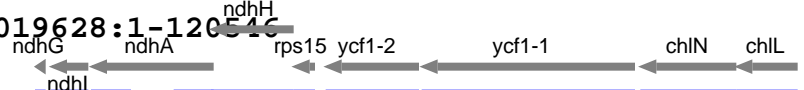
Alignment 6
sequence7
water_Tatra (+)
1-120947
Criteria: 70%, 100 bp
Regions: 171

X-axis: NC_019628
Resolution: 39
Window size: 100 bp

➡ gene
■ exon
■ UTR
■ CNS
■ mRNA



NC_019628 NC_019628:1-120543



Alignment 1
sequence2
typical_Beskydy (+)
1-120543
Criteria: 70%, 100 bp
Regions: 168

Alignment 2
sequence3
typical_Masurian (+)
1-120540
Criteria: 70%, 100 bp
Regions: 168

Alignment 3
sequence4
typical_Tatra (+)
1-120537
Criteria: 70%, 100 bp
Regions: 168

Alignment 4
sequence5
water_Pomeranian (+)
1-120944
Criteria: 70%, 100 bp
Regions: 171

Alignment 5
sequence6
water_Sudety (+)
1-120944
Criteria: 70%, 100 bp
Regions: 171

Alignment 6
sequence7
water_Tatra (+)
1-120947
Criteria: 70%, 100 bp
Regions: 171

X-axis: NC_019628
Resolution: 39
Window size: 100 bp

- gene
- exon
- UTR
- CNS
- mRNA

