

Figure S1: Photos of representative study sites A) grasslands B) shrublands C) planted forests

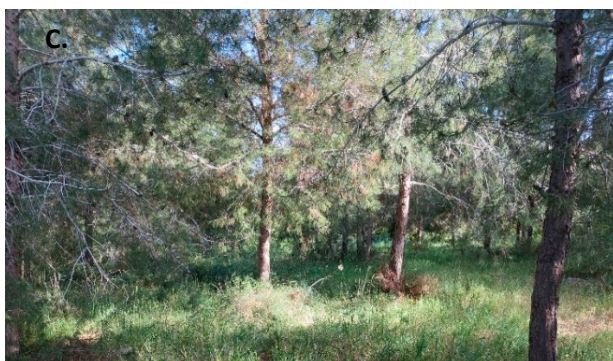
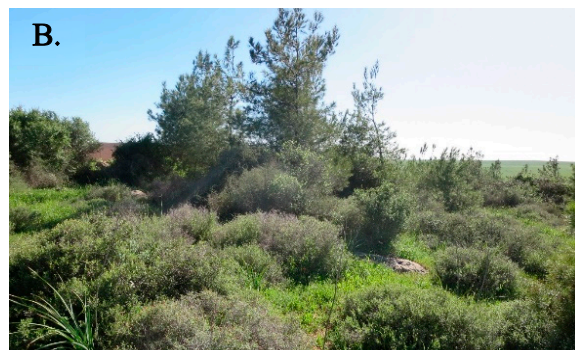


Table S1: Study plot information

Plot Name	Habitat Type	Coordinates (Israeli Transverse Mercator)	Uncultivated area at 100m radii (1000m ²)	Uncultivated area at 500m radii (1000m ²)	Uncultivated area at 1000m radii (1000m ²)	Area of uncultivated patch (1000m ²)
Beit Govrin 1 (BG1)	Planted Forest	N31.86489 E34.935678	57.42	39.78	41.15	88.02
Beit Govrin 2 (BG2)	Planted Forest	N31.85757 E34.985302	49.49	31.33	34.52	76.85
Beit Govrin 3 (BG3)	Planted Forest	N31.78897 E34.873174	56.98	36.08	39.37	76.85
Beit Govrin 4 (BG4)	Grassland	N31.82919 E34.870486	61.71	29.47	36.00	86.97
Hulda 1 (HU1)	Planted Forest	N31.679805 E34.844298	53.82	19.07	19.73	24.21
Hulda 2 (HU2)	Grassland	N31.841735 E34.953967	32.75	16.55	13.52	60.84
Kfar Menachem 1(KM1)	Shrubland	N31.814163 E34.88045	68.15	19.41	20.91	29.13
Kfar Menachem 2 (KM2)	Planted Forest	N31.851238 E34.991359	49.32	31.83	19.91	48.59
Mishmar David 1 (MD1)	Grassland	N31.747411 E34.842132	53.40	31.24	20.64	57.52
Mishmar David 2 (MD2)	Grassland	N31.634838 E34.886551	44.61	12.96	15.87	74.3
Nahshon 1 (NA1)	Planted Forest	N31.756569 E34.854881	57.54	53.64	41.51	73.05
Nahshon 2 (NA2)	Planted Forest	N31.602037 E34.868908	58.24	39.97	51.94	123
Netiv HaLamed-Heh 1 (NL1)	Grassland	N31.679815 E34.996296	50.44	43.47	51.00	34.41
Netiv HaLamed Heh 2 (NL2)	Grassland	N31.8205 E34.890915	61.06	20.67	21.06	47.6
Shaalavim 1 (SH1)	Grassland	N31.832395 E34.865079	67.39	40.66	34.71	343.81
Shaalavim 3 (SH3)	Grassland	N31.627241 E34.885012	21.48	17.17	25.40	19.44
Shaalavim 4 (SH4)	Planted Forest	N31.607181 E34.866469	45.31	26.08	28.28	63.14
Shaalavim 5 (SH5)	Grassland	N31.618879 E34.853685	58.59	31.34	42.01	198.34
Tal Shachar 1 (TS1)	Shrubland	N31.597754 E34.883518	62.49	50.40	46.88	516.6

Tal Shachar 2 (TS2)	Shrubland	N31.815352E 34.923495	66.11	47.69	38.26	516.6
Beit Nir 1 (BN1)	Shrubland	N31.815772E 34.929333	56.83	56.65	60.19	299
Beit Nir 2 (BN2)	Shrubland	N31.842777E 34.987128	47.95	61.94	53.21	61
Gal'on 1 (GAL1)	Shrubland	N31.777244E 34.84797	57.30	86.28	58.05	64
Kfar Menachem 3 (KM3)	Shrubland	N31.675464E 34.992184	46.80	16.25	9.46	33
Karmeit Yosef 1 (KY1)	Planted Forest	N31.61001 E34.860744	61.89	58.12	15.62	331
Nahshon 3 (NA3)	Grassland	N31.794362E 34.890562	41.45	27.59	25.19	55
Revadim 1 (R1)	Grassland	N31.682822E 34.848616	25.53	34.83	14.49	18
Revadim 2 (R2)	Grassland	N31.79029 E34.894271	59.62	28.65	30.14	33
Tel Zafit 1 (TZ1)	Shrubland	N31.86827 E34.976905	63.29	47.55	20.31	193
Tel Zafit 2 (TZ2)	Shrubland	N31.761718E 34.854044	57.60	28.02	17.44	40

Figure S2: Study plot set up (not to scale)

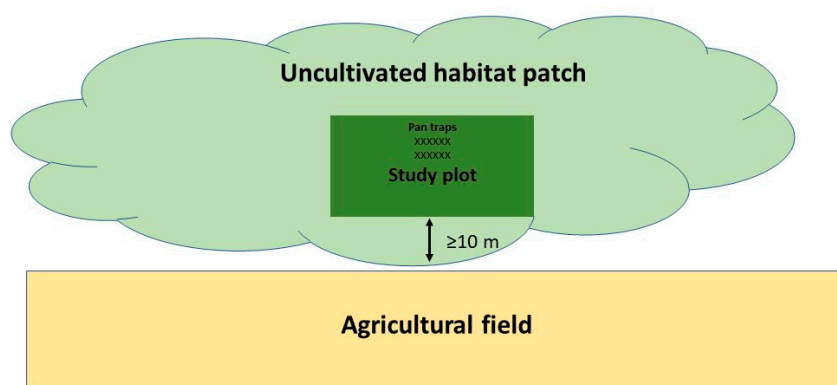


Table S2: Bee species sampled in the study, grouped by families

Andrenidae	Apidae	Colletidae
<i>Andrena Aciandrena</i> sp. 1	<i>Anthophora agama</i>	<i>Colletes alfkeni</i>
<i>Andrena Aciandrena</i> sp. 2	<i>Anthophora</i> cf. <i>caheles</i>	<i>Hylaeus albonotatus</i>
<i>Andrena aeneiventris</i>	<i>Anthophora crinipes</i>	<i>Hylaeus araxanus</i>
<i>Andrena aerinifrons levantina</i>	<i>Anthophora dispar</i>	<i>Hylaeus cornutus</i>
<i>Andrena alfkenelloides cardalia</i>	<i>Anthophora dufourii</i>	O
<i>Andrena aruana</i>	<i>Anthophora plumipes</i>	<i>Hylaeus intermedius</i>
	<i>Eucera</i> sp. <i>eucnemidea</i>	
<i>Andrena astica</i>	group	<i>Hylaeus kahri</i>
<i>Andrena bassana</i>	<i>Eucera</i> sp. <i>seminuda</i> group	<i>Hylaeus lineolatus</i>
<i>Andrena bisulcata/chaetogastra</i>	<i>Eucera spinipes</i>	<i>Hylaeus moricei</i>
<i>Andrena brumanensis</i>	<i>Eucera syriaca</i>	<i>Hylaeus orientalicus</i>
<i>Andrena butea</i>	<i>Eucera wolffi</i>	<i>Hylaeus punctatus</i>
<i>Andrena caspica</i>	<i>Nomada basalis</i>	<i>Hylaeus scutellatus</i>
<i>Andrena Chlorandrena</i> sp. 1	<i>Nomada cherkesiana</i>	<i>Hylaeus sidensis</i>
<i>Andrena Chlorandrena</i> sp. 2	<i>Nomada crenulata</i>	<i>Hylaeus soror</i>
<i>Andrena cinereophila</i>	<i>Nomada femoralis</i>	<i>Hylaeus stellatus</i>
<i>Andrena colletiformis</i>	<i>Nomada filicornis</i>	<i>Hylaeus syriacus</i>
<i>Andrena combusta ochraceohirta</i>	<i>Nomada flavoguttata</i>	
<i>Andrena danini</i>	<i>Nomada glaucopis</i>	<i>Hylaeus taeniolatus</i>
<i>Andrena dauma</i>	<i>Nomada israelis</i>	<i>Hylaeus trifidus</i>
<i>Andrena elmaria</i>	<i>Nomada lapillula</i>	
<i>Andrena Euandrena</i> sp. 1	<i>Nomada limassolica</i>	
<i>Andrena falcinella</i>	<i>Nomada nobilis</i>	
<i>Andrena fimbriatoides</i>	<i>Nomada ottomanensis</i>	
<i>Andrena flavipes</i>	<i>Nomada propinqua</i>	
<i>Andrena florea</i>	<i>Nomada puncticeps</i>	
<i>Andrena fuligula</i>	<i>Nomada rubiginosa</i>	
<i>Andrena fulvitarsis</i>	<i>Nomada rubricollis</i>	
<i>Andrena glareola</i>	<i>Nomada scheuchli</i>	
	<i>Nomada</i> sp.17, aff.	
<i>Andrena hesperia</i>	<i>trispinosa</i>	
<i>Andrena hyemala repressa</i>	<i>Nomada</i> sp.2	
<i>Andrena iliaca</i>	<i>Nomada succincta</i>	
<i>Andrena immaculata</i>	<i>Xylocopa iris</i>	
<i>Andrena isabellina</i>	<i>Anthophora rutilans</i>	
<i>Andrena israelica</i>	<i>Anthophora</i> sp.	
<i>Andrena janthina</i>	<i>Ceratina bifida</i>	
<i>Andrena melittoides</i>	<i>Ceratina bispinosa</i>	
<i>Andrena menahemella</i>	<i>Ceratina chalcites</i>	
<i>Andrena merula</i>	<i>Ceratina cucurbitina</i>	
<i>Andrena Micrandrena-female-sp.</i>		
10	<i>Ceratina dallatorreana</i>	
<i>Andrena Micrandrena-female-sp. 2</i>	<i>Ceratina mandibularis</i>	
<i>Andrena Micrandrena-female-sp. 3</i>	<i>Ceratina moricei</i>	

<i>Andrena Micrandrena-female-sp. 4</i>	<i>Ceratina parvula</i>
<i>Andrena Micrandrena-female-sp. 5</i>	<i>Ceratina schwarzi</i>
<i>Andrena Micrandrena-female-sp. 9</i>	<i>Eucera albofasciata</i>
<i>Andrena Micrandrena-male-sp. 11</i>	<i>Eucera caerulescens</i>
<i>Andrena Micrandrena-male-sp. 12</i>	<i>Eucera cf. Clypeata</i>
<i>Andrena Micrandrena-male-sp. 13</i>	<i>Eucera cf. edentata</i>
<i>Andrena Micrandrena-male-sp. 14</i>	<i>Eucera cf. maxima</i>
<i>Andrena Micrandrena-male-sp. 15</i>	<i>Eucera cf. obsoleta</i>
<i>Andrena mucronata/mizorhina</i>	<i>Eucera cf. sinufascia</i> (=penicillata)
<i>Andrena nisoria</i>	<i>Eucera cinnamomea</i>
<i>Andrena nitidiuscula nigellata</i>	<i>Eucera clypeata</i>
<i>Andrena nubica</i>	<i>Eucera cubitalia parvicornis</i>
<i>Andrena oedictema</i>	<i>Eucera curvitaris</i>
<i>Andrena orientana</i>	<i>Eucera cypria</i>
<i>Andrena palaestina</i>	<i>Eucera decipiens</i>
<i>Andrena panurgimorpha</i>	<i>Eucera ebmeri</i>
<i>Andrena pinkeunia</i>	<i>Eucera edentata</i>
<i>Andrena rufomaculata</i>	<i>Eucera friesei</i>
<i>Andrena sedumella</i>	<i>Eucera gaullei</i>
<i>Andrena sigiella</i>	<i>Eucera grozdanici</i>
<i>Andrena similis</i>	<i>Eucera kullenbergi</i>
<i>Andrena speciosa</i>	<i>Eucera laxiscopa</i>
<i>Andrena sphecodimorpha</i>	
<i>mediterranea</i>	<i>Eucera lucasi</i>
<i>Andrena statuta</i>	<i>Eucera major</i>
<i>Andrena tadauchii</i>	<i>Eucera maxima</i>
<i>Andrena truncatilabris</i>	<i>Eucera microsoma</i>
<i>Andrena ungeri</i>	<i>Eucera</i> <i>nigrifacies/penicollata</i>
<i>Andrena uncinata</i>	<i>Eucera nigrilabris</i>
<i>Andrena urfanella</i>	<i>Eucera obsoleta</i>
<i>Andrena vetula</i>	<i>Eucera paraclypeata</i>
<i>Andrena wilhelmi</i>	<i>Eucera parvicornis</i>
<i>Andrena wolffi</i>	<i>Eucera penicillata</i>
<i>Clavipanurgus orientalis</i>	<i>Eucera plumigera</i>
<i>Melitturga sp.</i>	<i>Eucera proxima</i>
<i>Panurginus female-sp.2</i>	<i>Eucera pseudeucnemidae</i>
<i>Panurginus male-sp.1</i>	<i>Eucera rhodia</i>
<i>Panurginus sp.</i>	<i>Eucera sinufascia</i> (=penicillata)
<i>Panurginus turcomanicus</i>	
<i>Panurgus posticus</i>	

Halictidae

Halictus berlandi

Megachilidae

Afranthidium lebanense

Halictus resurgens
Halictus tetrazonianellus
Lasioglossum aegyptiellum
Lasioglossum aff. morio
Lasioglossum anellum
Lasioglossum clypeiferellum
Lasioglossum epipygiale
Lasioglossum glabriusculum
Lasioglossum imbecillum
Lasioglossum israelense
Lasioglossum lineare
Lasioglossum malachurum
Lasioglossum mamdilulae
Lasioglossum marginatum
Lasioglossum mesosclerum
Lasioglossum nigripes pharaonis
Lasioglossum obscuratum
Lasioglossum politum atomarium
Lasioglossum pseudosphecodimorphum
Lasioglossum pygmaeum
Lasioglossum sp.
Lasioglossum tadschicum
Lasioglossum truncaticolle
Lasioglossum vagans
Nomioidinae
Rophites nigripes
Seladonia cephalica
Sphecodes rubicundes
Systropha planidens

Anthidium dalmaticum
Anthidium diadema
Anthidium punctatum
Chelostoma diodon
Chelostoma isabellinum
Chelostoma mocsaryi
Chelostoma spec. 24
Chelostoma spec. 3
Hoplitis acuticornis
Hoplitis anipuncta
Hoplitis antalyiae
Hoplitis cf. obtusa
Hoplitis cf. serainae
Hoplitis cypriaca
Hoplitis hierichonica
Hoplitis onychophora
Hoplitis pallicornis
Hoplitis praestans
Hoplitis serainae
Hoplitis sp.
Hoplitis unispina
Megachile giraudi
Megachile manicata
Osmia cephalotes
Osmia cyanoxantha
Osmia dives
Osmia erythrogastra
Osmia latreillei
Osmia ligurica
Osmia nana
Osmia niveata
Osmia rufohirta

Osmia rufotibialis
Osmia scutellaris
Osmia signata
Osmia subcornuta
Osmia teunissenii
Osmia viridana
Protosmia sp.
Protosmia angustimandibulae
Protosmia paradoxa
Protosmia spec. ("humeralis")
Rhodanthidium septemdentatum
Stenoheriades levantica