

Supplementary materials

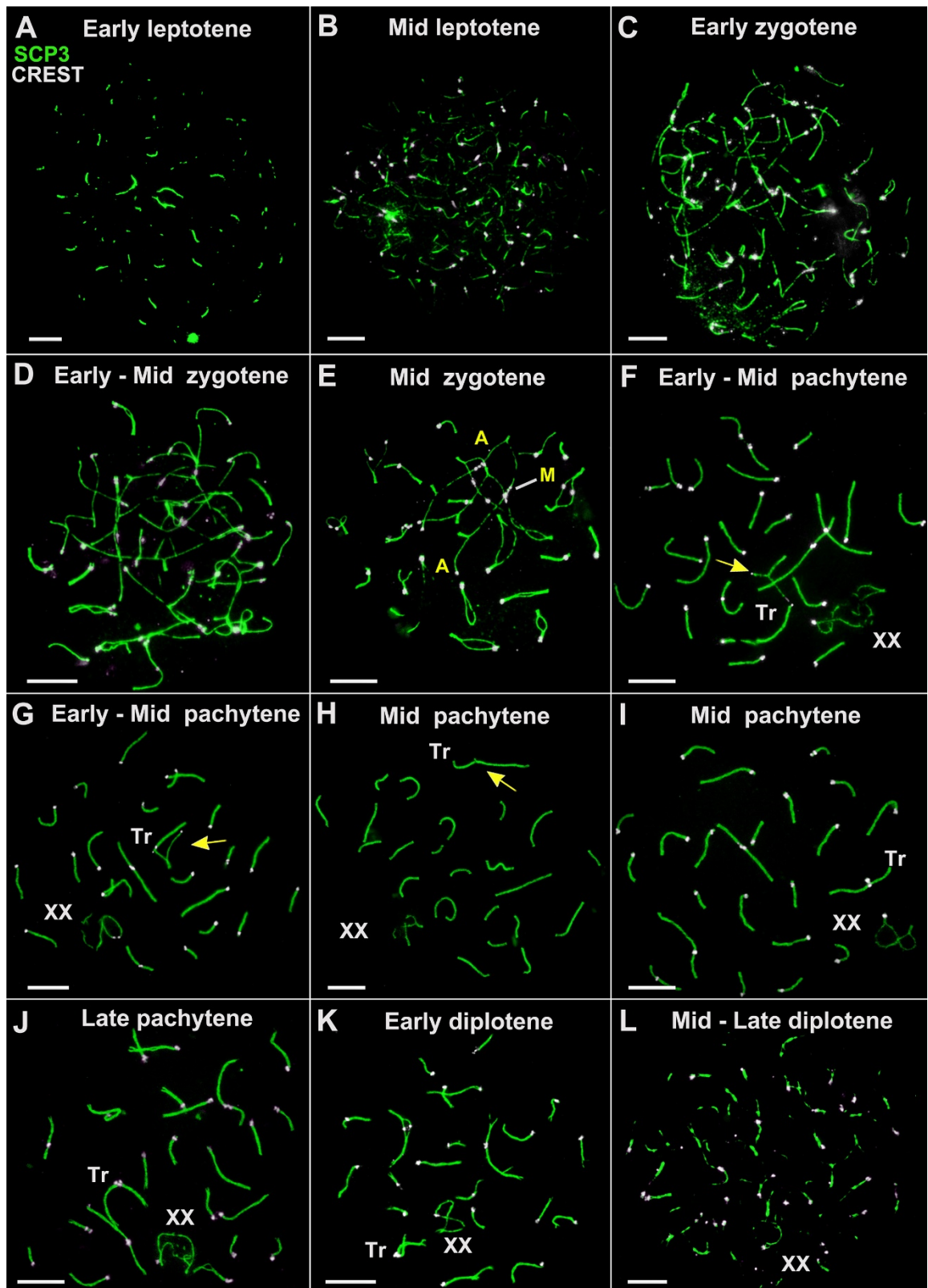
# **Irregularities in Meiotic Prophase I as Prerequisites for Reproductive Isolation in Experimental Hybrids Carrying Robertsonian Translocations**

**Oxana Kolomiets<sup>1</sup>, Irina Bakloushinskaya<sup>2,\*</sup>, Mark Pankin<sup>1</sup>, Valentina Tambovtseva<sup>2</sup>  
and Sergey Matveevsky<sup>1,\*</sup>**

<sup>1</sup> Vavilov Institute of General Genetics, Russian Academy of Sciences, 119991 Moscow, Russia

<sup>2</sup> Koltzov Institute of Developmental Biology, Russian Academy of Sciences,  
119334 Moscow, Russia

\* Correspondence: i.bakloushinskaya@idbras.ru (I.B.); sergey8585@mail.ru (S.M.)



**Figure S1.** Chromosome dynamics in prophase I of *E. tancrei* sterile F10 hybrid (A-L). Axial and lateral elements of the SCs were identified using the anti-SYP3 antibody (green); kinetochores were detected by means of the anti-CREST antibody (white) (except for A and H); XX – male sex bivalent. Tr – SC trivalent. A – autosomal bivalent. The yellow arrow indicates the asynaptic regions of SC trivalent (F, G, H). A similar set of microphotos (with  $\gamma$ H2AFX) is shown in the Figure 5. Scale bar (A) = 5  $\mu$ m

**Table S1.** Meiotic data in *E. tancrei* and hybrids

[illegible]