

Supplementary Materials

Description of *Neochlorella semenenkoi* gen. et. sp. nov. (Chlorophyta, Trebouxiophyceae), a novel *Chlorella*-like alga with high biotechnological potential

Elena Krivina, Lidia Bobrovnikova , Anna Temraleeva, Alexandra Markelova, David Gabrielyan and Maria Sinetova

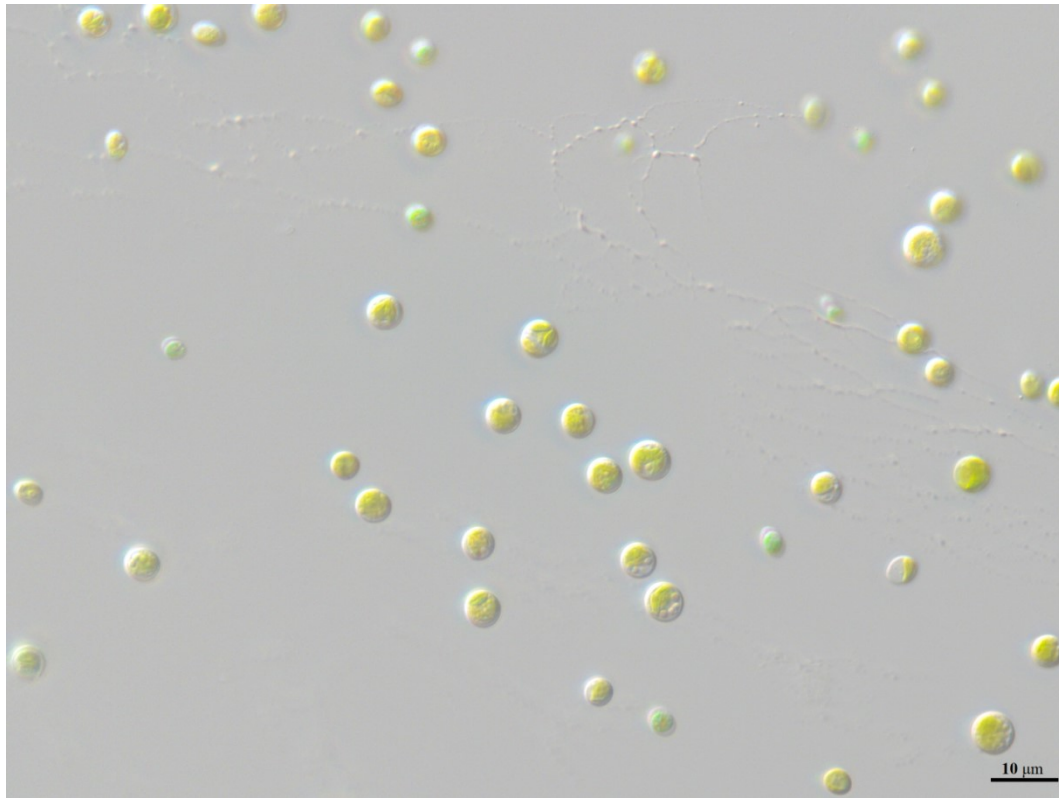


Figure S1. Cell morphology of *Neochlorella semenenkoi* IPPAS C-1210 after the grazing test: a 3-day-old culture grown in BG-11 with the phycophagous *Brachionus rotundiformis*.

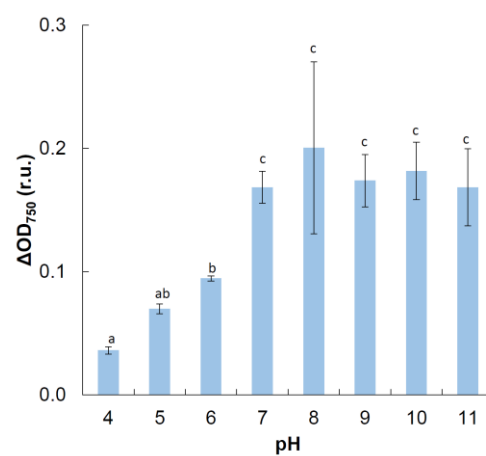


Figure S2. Growth of *Neochlorella semenenkoi* IPPAS C-1210 at different pH. Error bars show standard deviations of the mean (n=3). The variants with the same letter are not significantly different (one-way ANOVA analysis, post hoc Tukey HSD test; $p < 0.05$). The second experiment out of two is shown.

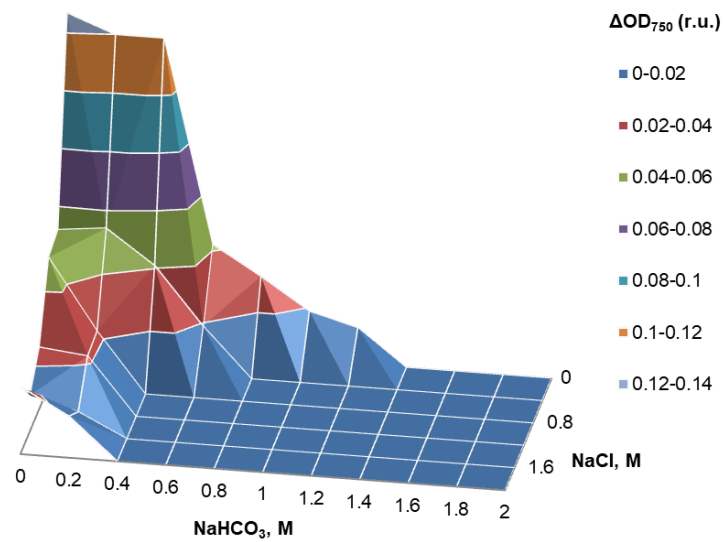


Figure S3. Growth of *Neochlorella semenenkoi* IPPAS C-1210 in the concentration matrix NaHCO_3 and NaCl . The second experiment out of two is shown.