

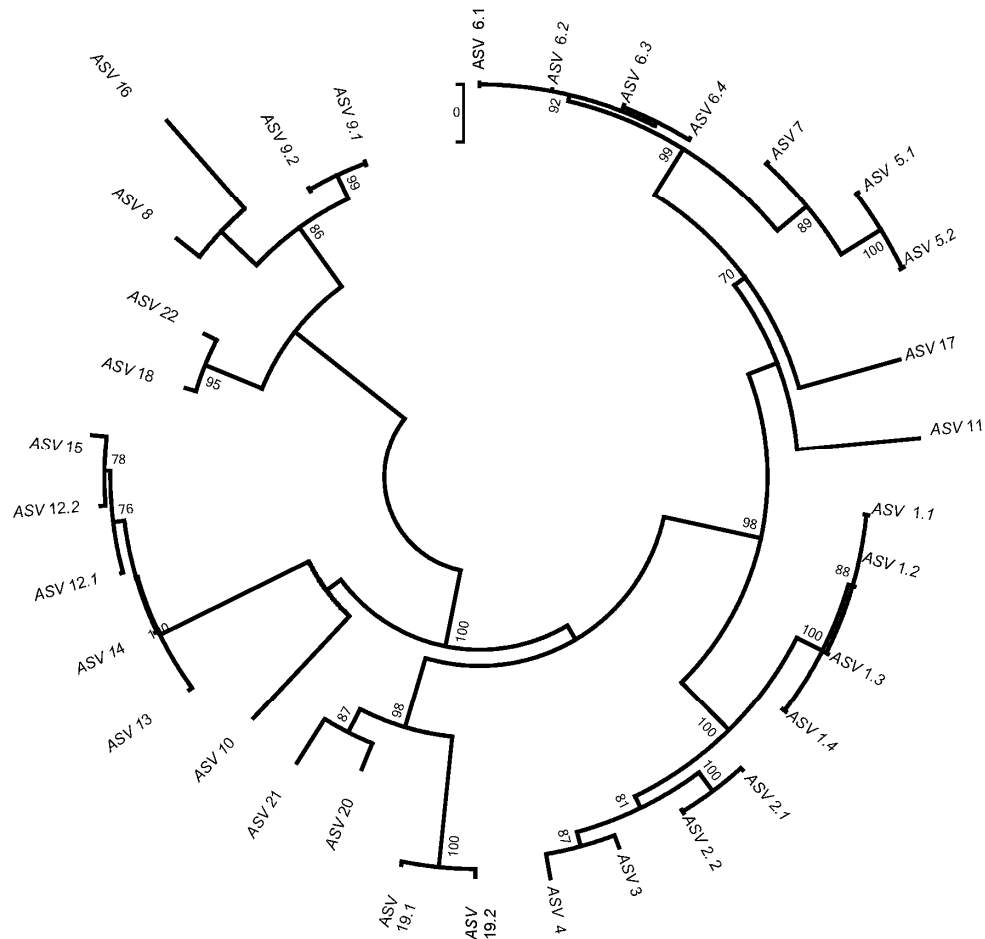
# Detection of a diverse endophyte assemblage within fungal communities associated with the Arundo leaf miner, *Lasioptera donacis* (Diptera: Cecidomyiidae)

Marie-Claude Bon<sup>1, \*</sup>, John A. Goolsby<sup>2</sup>, Guy Mercadier<sup>1,3</sup>, Fatiha Guermache<sup>1</sup>, Javid Kashefi<sup>1</sup>, Massimo Cristofaro<sup>4</sup>, Ann T. Vacek<sup>5,3</sup> and Alan Kirk<sup>1,3</sup>

**Table S1.** Collection sites and dates, name of the collector, and abbreviation for the fungus isolates recovered in each site. In bold are the fungus isolates recovered from ovarioles and ovipositors of *L. donacis*.

Collection site / Country	Collection date/ Collector name	Abbeivation for fungus isolate
Antequerra/Spain	10/11/2011/Guy Mercadier	Ante 1, Ante 2
Badajoz/Spain	09/11/2011/Guy Mercadier	Bada 1, Bada 2
Bonarès/Spain	10/11/2011/Guy Mercadier	Bona 1
La Bernadilla/Spain	11/11/2011/Guy Mercadier	Bern 1, Bern 2
Medellin/Spain	08/11/2011/Guy Mercadier	Med 1, Med 2
Muro de Alcoy/Spain	15/11/2011/Guy Mercadier	Muro 1
Vilobi/Spain	26/09/2011/Guy Mercadier	Vil 1 to Vil 5
Tortosa/Spain	26/09/2011/Guy Mercadier	Tort 4 to Tort 6
Camprils/Spain	27/09/2011/Guy Mercadier	Camp 1, Camp 2
Girona/Spain	16/11/2011/Guy Mercadier	Giro 3 to Giro 5
Huétor Tajar/Spain	10/11/2011/Guy Mercadier	Huet 1 to Huet 3
Jete/Spain	11/11/2011/Guy Mercadier	Jetp 1 to Jetp 4
	03/05/2012 John Goolsby	Tjet 1 to Tjet 3
Villanueva/Spain	08/11/2011/Guy Mercadier	Villa 1
San Juan del Puerto/Spain	09/11/2011/Guy Mercadier	San 2, San 3
La Puebla de Cazalla/Spain	10/11/2011/Guy Mercadier	Pueb 1
Adra Zapata/Spain	11/11/2011/Guy Mercadier	Adra 1, Adra 2
Village Catalan/France	16/11/2011/Guy Mercadier	Cat 1
Assas/France	13/10/2011& 22/10/2013/Guy Mercadier & Fatiha Guermache	Ass1, Ass3; BMWL, BMBL
Restinclières/France	19/10/2011/Guy Mercadier	Rest 1 to Rest 4
Baillarguet/France	13/10/2011/Guy Mercadier	Bail 3, Bail 5, Bail 6
Prades le Lez/France	15/10/2012/Alan kirk	<b>Ovi1 to Ovi3, Egg1 to Egg3</b>
Ireapetra/Crete	22/06/2012/Alan Kirk	<b>Ire 1, Ire 2 to Ire 3</b>
Agia Triada/Greece	14/07/2013/Javid Kashefi & Marie Claude Bon	Agia 1 to Agia 10
Fiumedinisi/Sicily	17/06/2012/Alan Kirk	Fiu 1
Laredo LCC/Texas USA	29/08/2012/John Goolsby	Lar 1 to Lar 3
Del Rio/Texas USA	29/08/2012/ John Goolsby	Rio 1 to Rio 5
Pond MAB/Texas USA	29/08/2012/John Goolsby	Pond 1 to Pond 4

Moore Air Base/Texas USA	29/08/2012/John Goolsby	Moo 1 to Moo 3
Quemado/Texas USA	29/08/2012/John Goolsby	Que 1 to Que 4



**Figure S1.** Circular phylogenetic tree inferred from maximum likelihood (ML) using ITS Amplicon variant sequences (ASVs) depicting the within and between MOTUs diversity of the endophytes recovered from fungal communities associated with *Lasioptera donacis* and leaf sheath of giant reed. The first number after the ASV code corresponds to the MOTU number. ML values greater than 70% are indicated near the nodes.

**Table S2.** List of the MOTUs evidenced in the study with taxonomic code assignment provided by UNITE database and associated strains. In bold are the strains recovered from ovarioles and ovipositors of *L. donacis*.

MOTU number / Reference UNITE fungal Species Hypothesis (SH)	Fungal strain
MOTU1/ SH1541923.08FU	Ante1, Ass3, Bada2, Bona1, Ire2, Bern1, Med2, Muro1, Rest2, Rest4, Vil2, Vil5, Agia1, Agia2, Agia4, Agia5, Tjet1, Tjet3, Lar1
MOTU2/ SH1541921.08FU	Bail6, Bern2
MOTU3/ SH1541924.08FU	Rio 3, 4, 5
MOTU4/SH1541928.08FU	Pond1, Lar2
MOTU5/SH1567483.08FU	Ass1, Bada1, Bail5, Ire3, Rest3, Tort6, Villa1

MOTU6/ SH1610159.08FU	Camp2, Fiu1, Giro3, Giro5, Huet1, Huet3, Jetp1, Jetp3, Vil1, Vil3, Agia7, Agia8, Agia9, Agia10, BMWL, BMBL, Rio1, Pond2, <b>Ire11</b>
MOTU7/ SH1610157.08FU	Moo2
MOTU8/ SH1505921.08FU	Huet2
MOTU9/ SH1526398.08FU	Que1, Que2, Pond3, Pond4
MOTU10/ SH1507367.08FU	Bail3, San2, Tort4, Agia6
MOTU11/ SH1615599.08FU	Rest1
MOTU12/ SH1572816.08FU	Pueb1, Lar3
MOTU13/ SH1572792.08FU	Giro4, Tjet2
MOTU14/ SH1572792.08FU	Vil4
MOTU15/ SH1572820.08FU	Agia3
MOTU16/ SH1526406.08FU	Moo1, Que3
MOTU17/ SH1524421.08FU	Adra1, Adra2
MOTU18/ SH1547057.08FU	Moo3
MOTU19/ SH1516144.08FU	Ante2, Jetp4, Jetp2, San1, San3, Cat, Rio2
MOTU20/ SH1529984.08FU	Camp1, Med1
MOTU21/ SH1530001.08FU	Tort5
MOTU22/ SH1547057.08FU	Que 4
MOTU23/ SH1540045.08FU	<b>Egg1 to Egg 2, ovi1 to ovi3</b> <b>Egg 3</b>