

SUPPLEMENTARY MATERIAL for
Free-living and Particle-associated Microbial Communities of Lake Baikal Differ by
Season and Nutrient Intake

Bashenkhaeva M.V.*, Yeletskaia Ye.V., Tomberg I.V., Marchenkov A.M., Titova L.A.,
Galachyants Yu.P.

Limnological institute Siberian branch of Russian Academy of Science

*Corresponding author: maria.bashenkhaeva@gmail.com

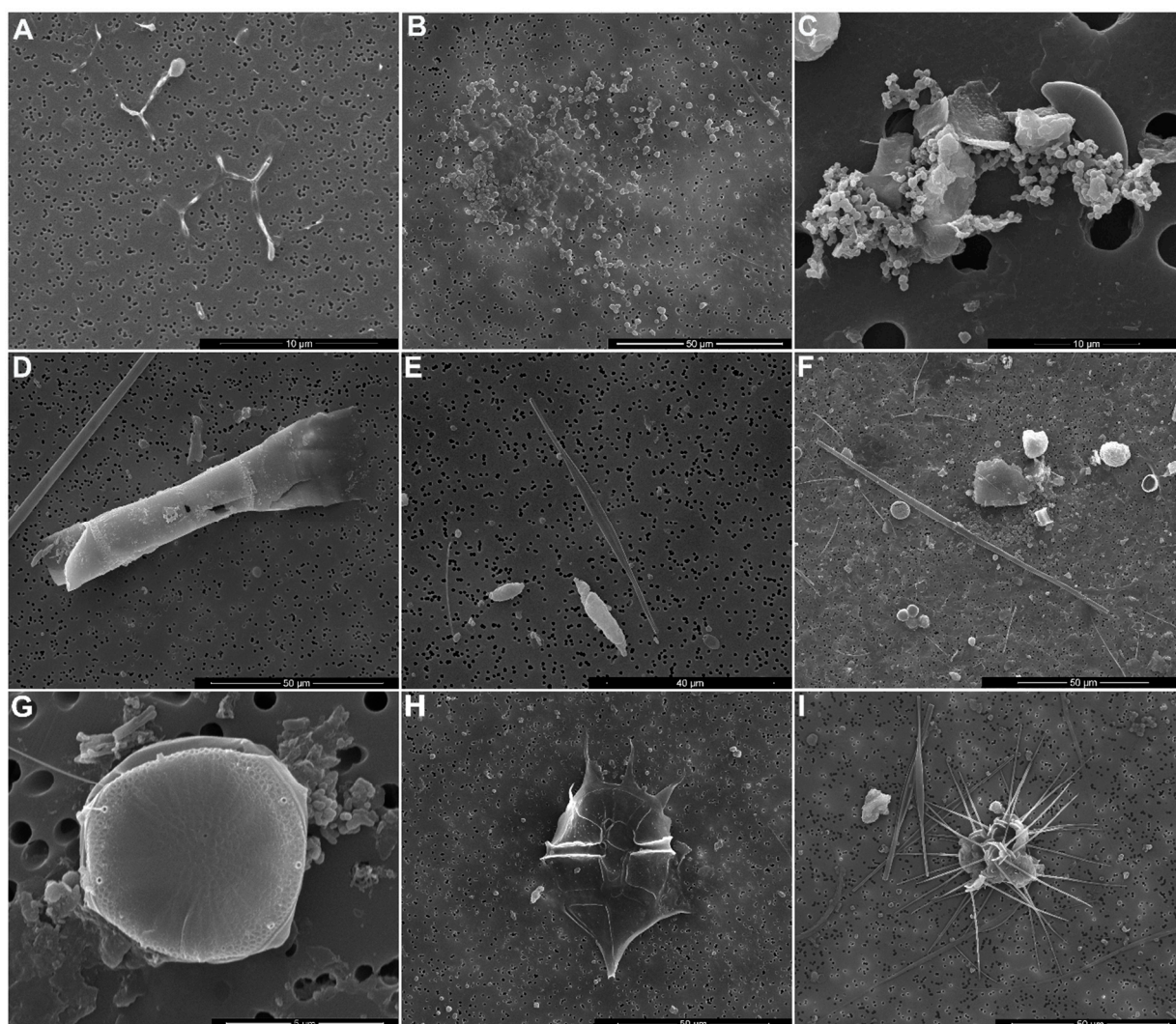


Figure S1. SEM microphotography. Sample of FL fraction deposited on a 0.22-μm pore-size filter (A, B); sample of PA bacteria (C); PA bacteria on the cell of: diatom *Aulacoseira islandica* (D); diatom *Nitzschia graciliformis* (E); diatom *Ulnaria* (F); diatom *Stephanodiscus* (G); dinoflagellate *Peridinium baicalense* (H) and chrysophyta *Chrysosphaerella* sp.

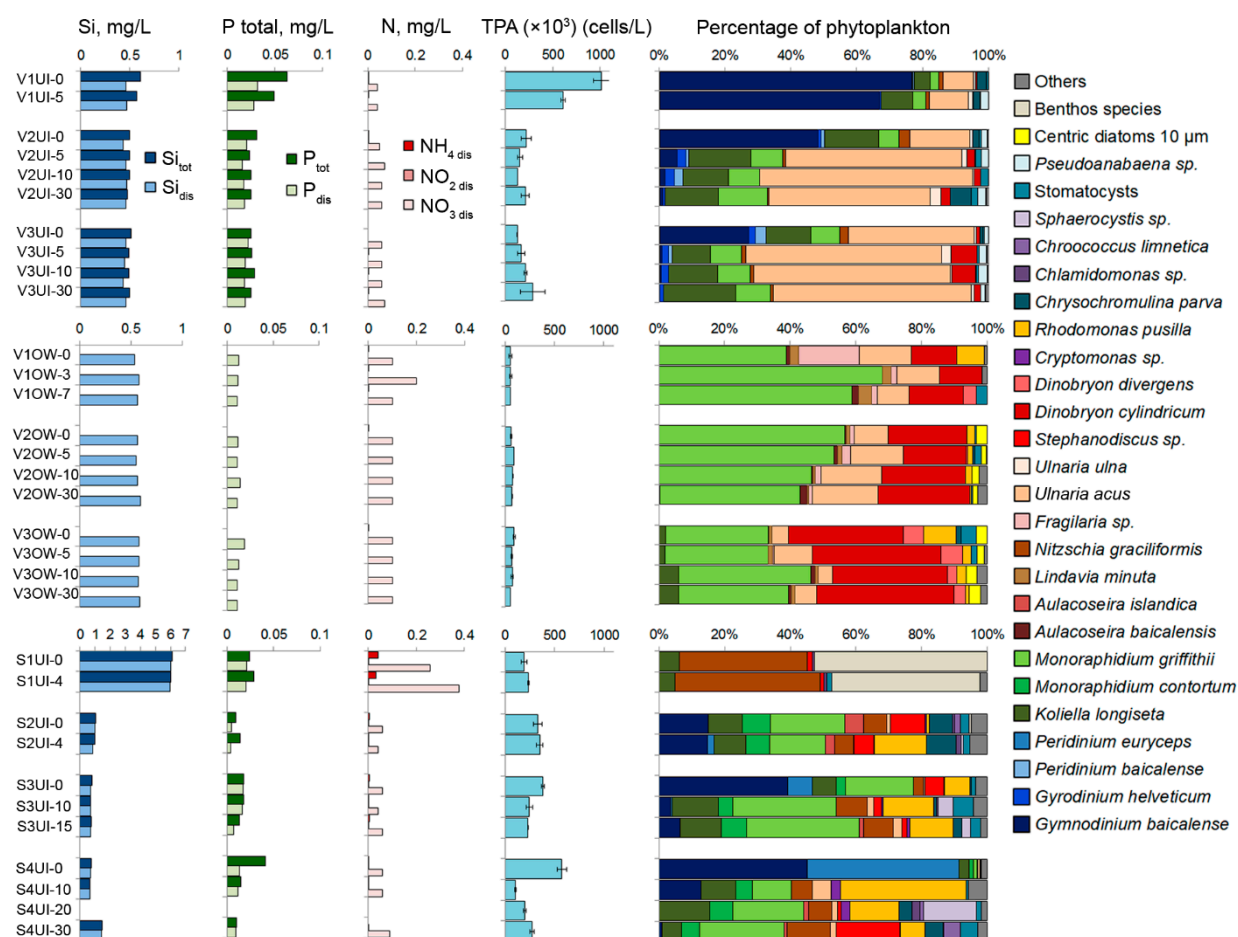


Figure S2. Nutrient concentrations, total abundance and species composition of microalgae using light microscopy of samples. UI – under ice samples; OW – open water samples; the last number in the sample name indicates the sampling depth; tot - concentration of total biogenic elements; dis - concentration of dissolved biogenic elements.

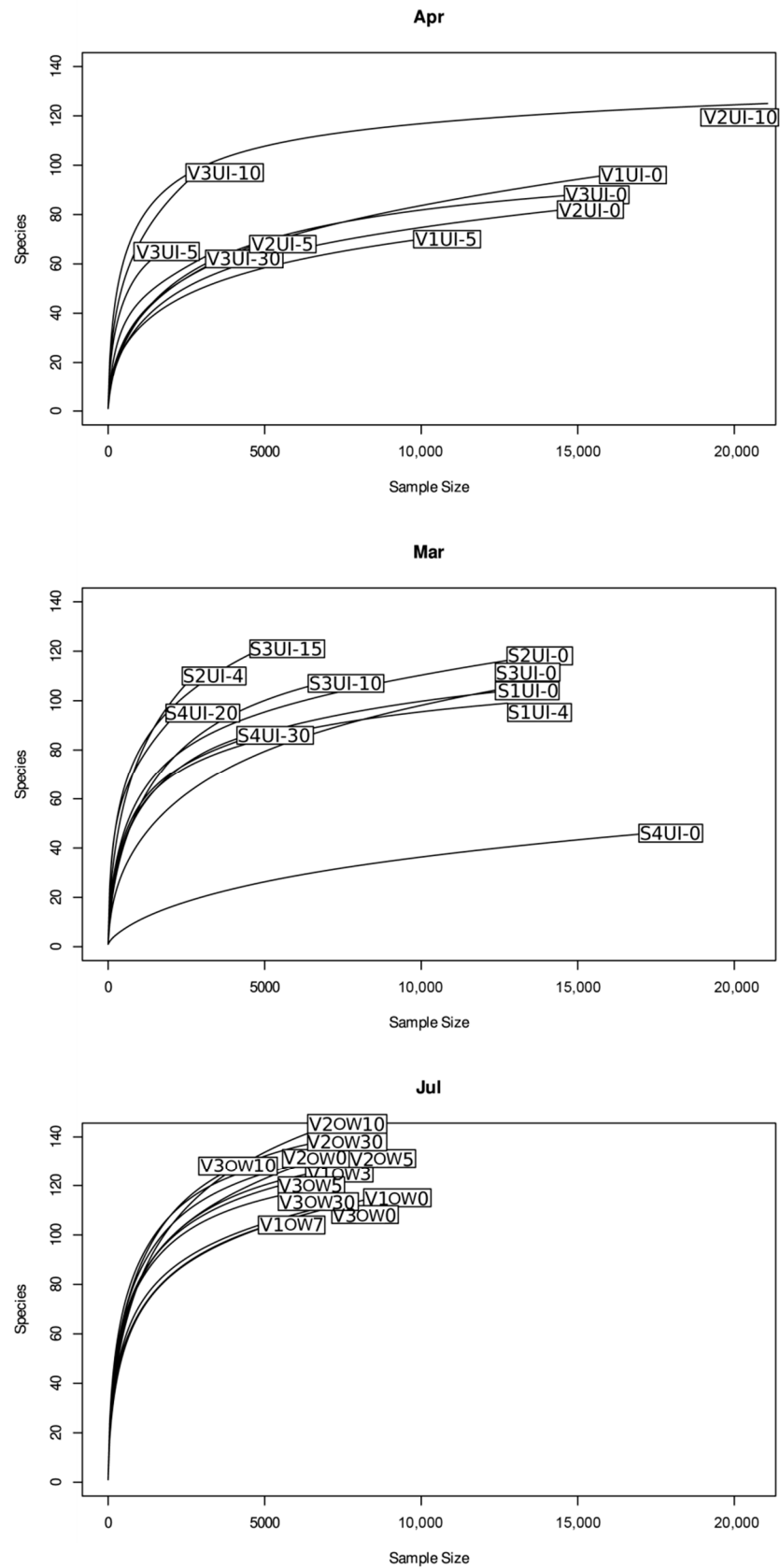


Figure S3. Microeukaryotic diversity in April, March and July communities as characterized by rarefaction curves of OTUs defined at genetic distance levels of 0.03.

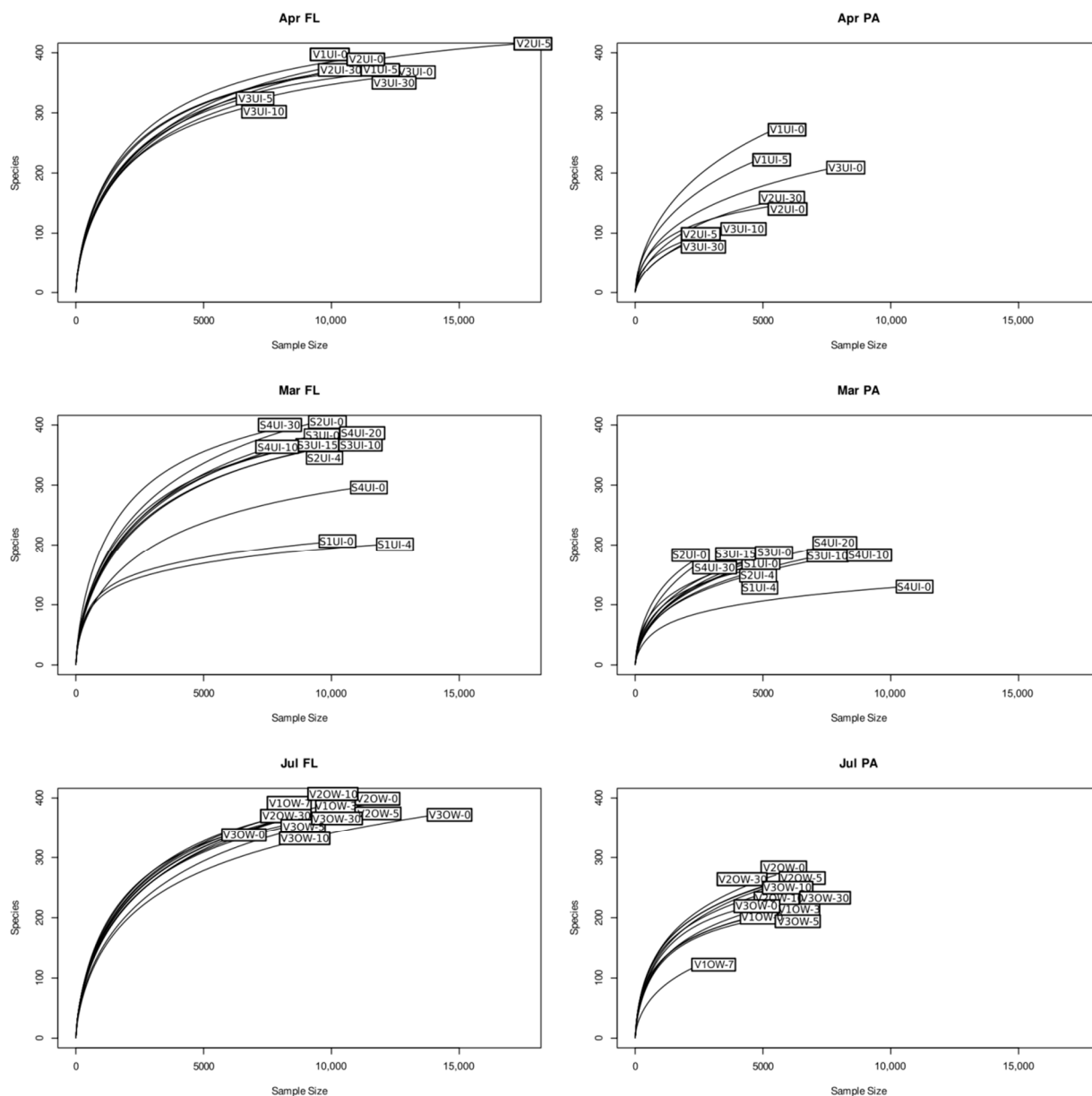


Figure S4. Bacterial diversity in FL and PA communities as characterized by rarefaction curves of OTUs defined at genetic distance levels of 0.03.

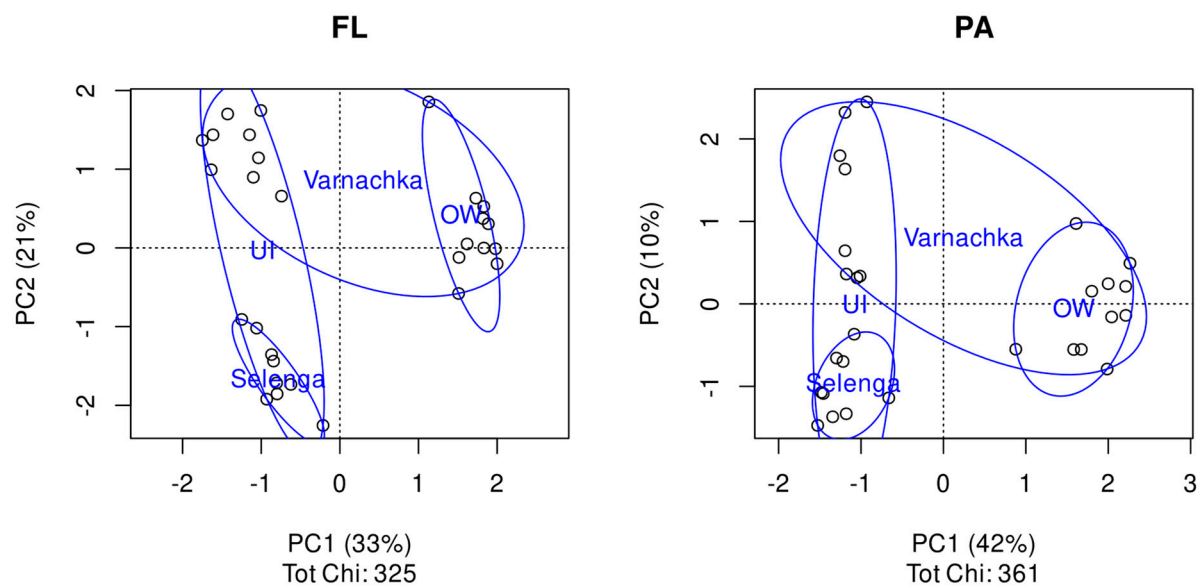


Figure S5. The tb-PCoA ordination of the FL and PA bacterial profiles. Points (profiles) are grouped by independent factor variables "site" and "season" (blue ovals). The profiles of Selenga mouth were excluded from this analysis.

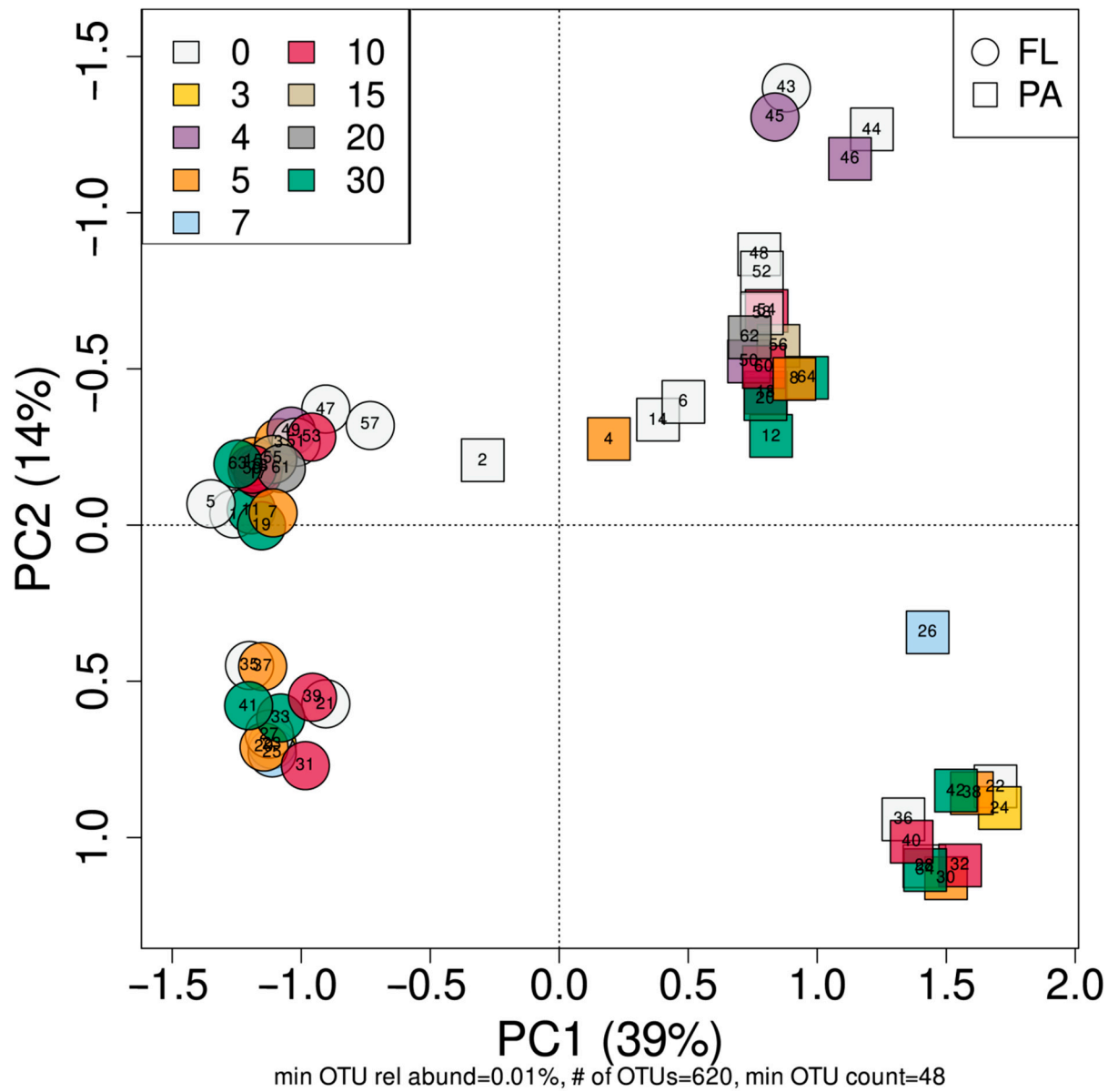


Figure S6. PCoA of FL and PA communities. Glyph shape denotes the community lifestyle: FL – circle, PA – square. Glyphs are colored according to depth of sampling.