

Figure S1. The degradation capacity for all isolates for both substrates are given. The data were normalized by subtracting one based on the negative control's absorbance. The lowest data refers to low chromophores absorbance, indicating degradation activity by isolates when enzymes act on aromatic substrate molecules, releasing oxygen atoms to the medium and leading to a change of DCPIP color. The positive control is at the top of the figure, and the genus of each isolate is shown.

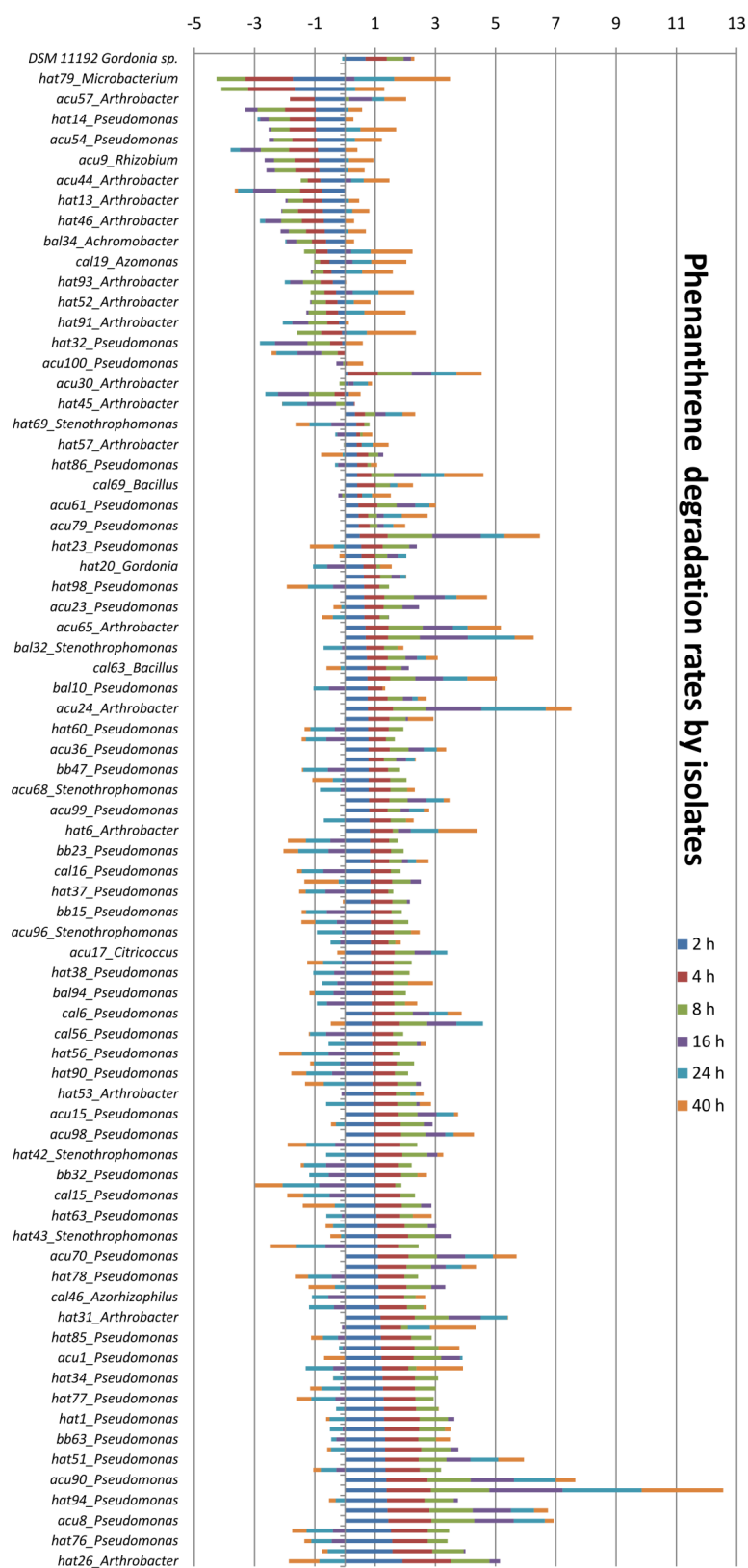


Figure S1. Cont.

