

Article

Integrating Wearable Sensors and Video to Determine Microlocation-Specific Physiologic and Motion Biometrics-Method Development for Competitive Climbing

Miyuki Breen ^{1,*}, Taylor Reed ^{2,3}, Hannah M. Breen ², Charles T. Osborne ^{2,4} and Michael S. Breen ⁵

¹ Department of Mathematics, North Carolina State University, Raleigh, NC 27695, USA

² The Beta Angel Project, Alexandria, VA 22304, USA

³ Sportrock Performance Institute, Alexandria, VA 22304, USA

⁴ Department of Biomedical Engineering, The University of Utah, Salt Lake City, UT 84112, USA

⁵ Department of Civil, Construction, and Environmental Engineering, North Carolina State University, Raleigh, NC 27695, USA

* Correspondence: mbreen@ncsu.edu

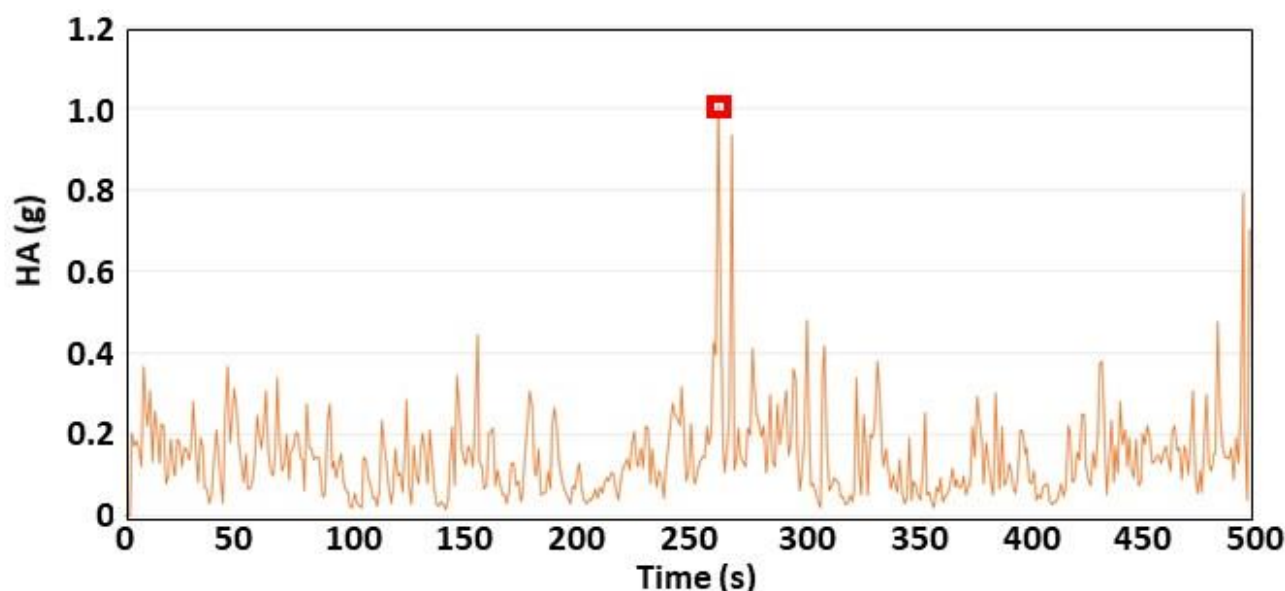


Figure S1. Hip acceleration (HA) during a lead climb with a fall. The red square indicates the time when the lead fall occurs and HA = 1.0 g.