

SUPPLEMENTARY MATERIAL

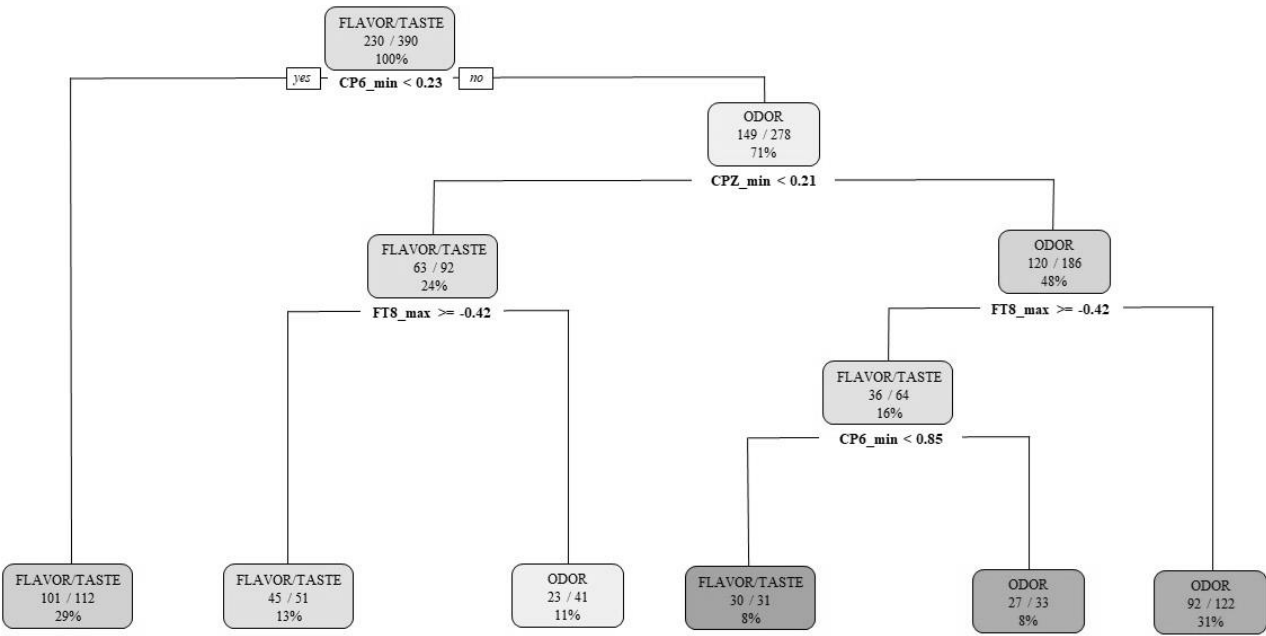


Figure S1a. Decision tree of odor vs. taste/flavor discrimination task.

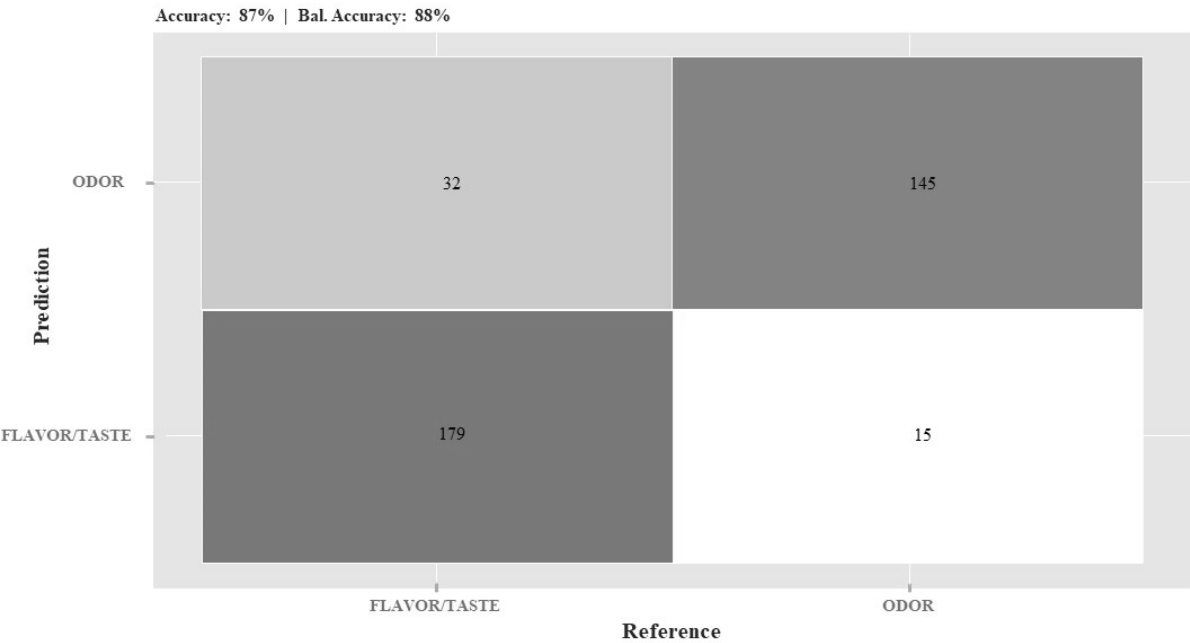


Figure S1b. Confusion matrix of the descriptive model shown in Figure S1a.

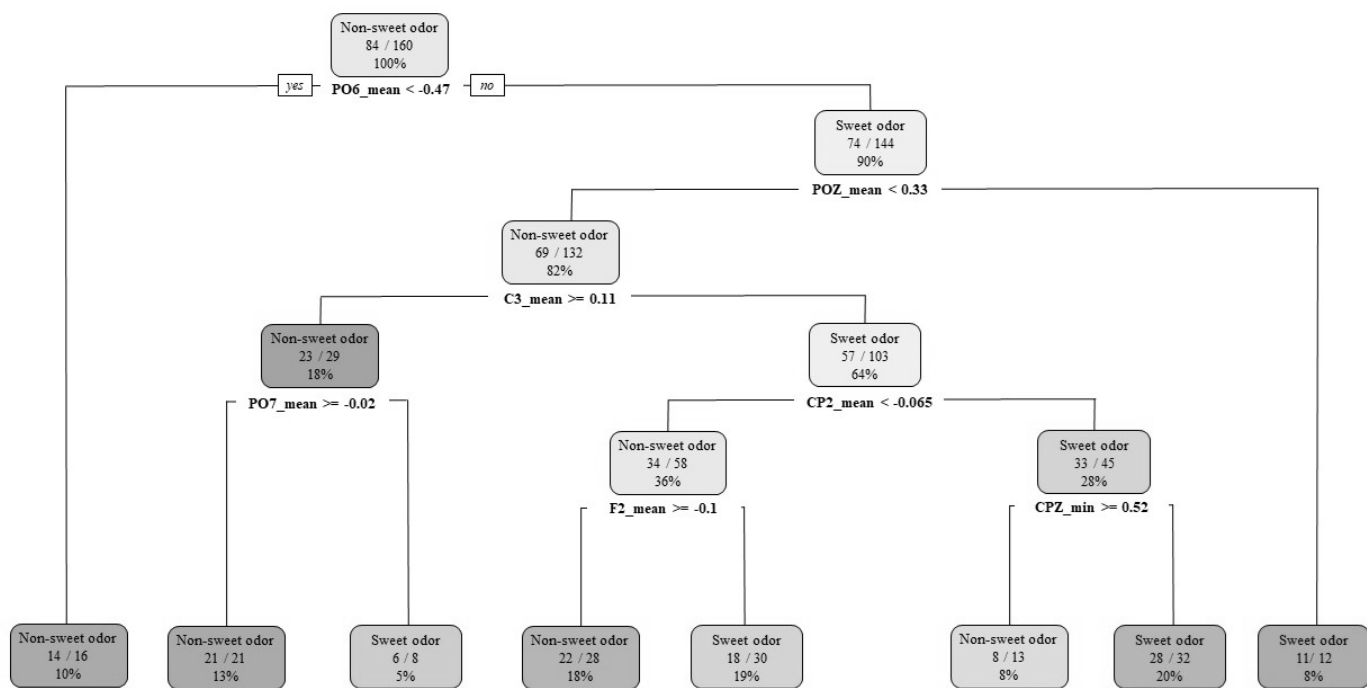


Figure S2a. Decision tree of sweet odor vs. non-sweet odor discrimination task.

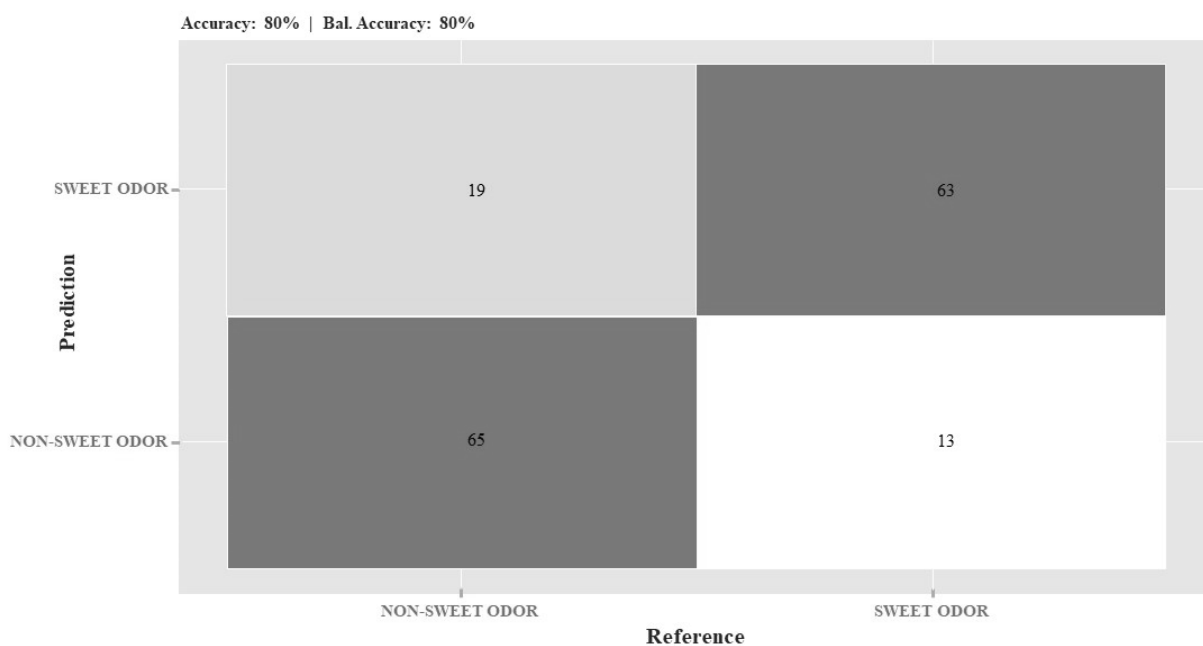


Figure S2b. Confusion matrix of the descriptive model shown in Figure S2a.

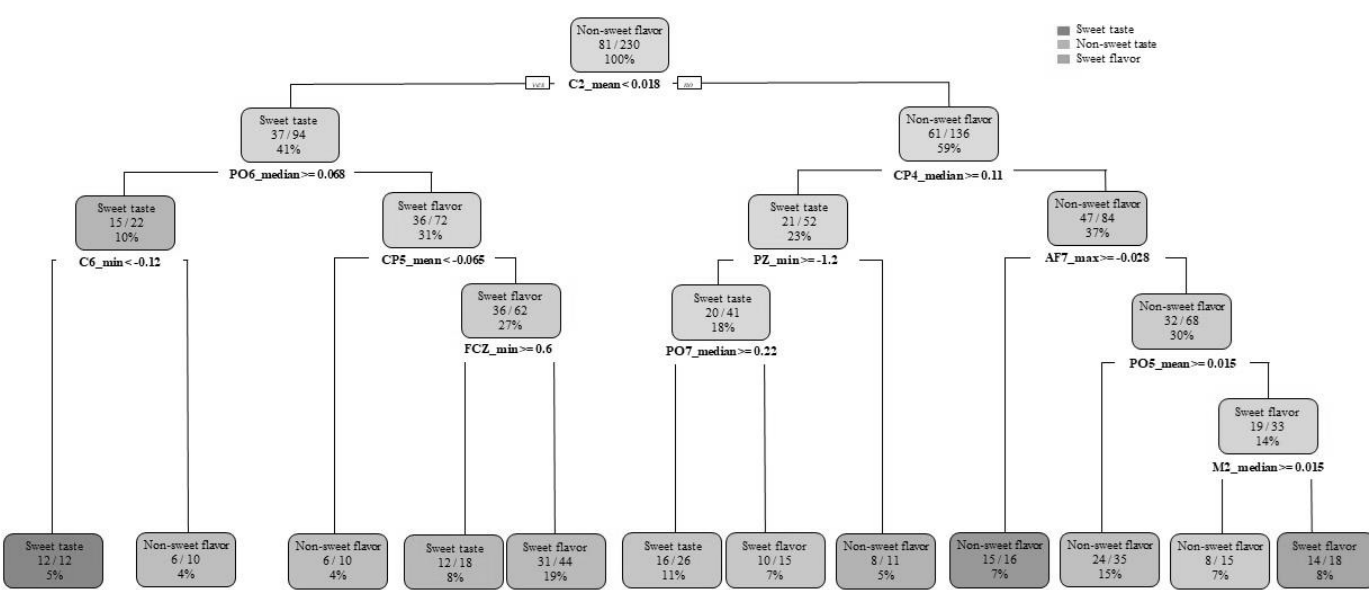


Figure S3a. Decision tree of taste/flavor discrimination task (sweet taste, sweet flavor & non-sweet flavor).

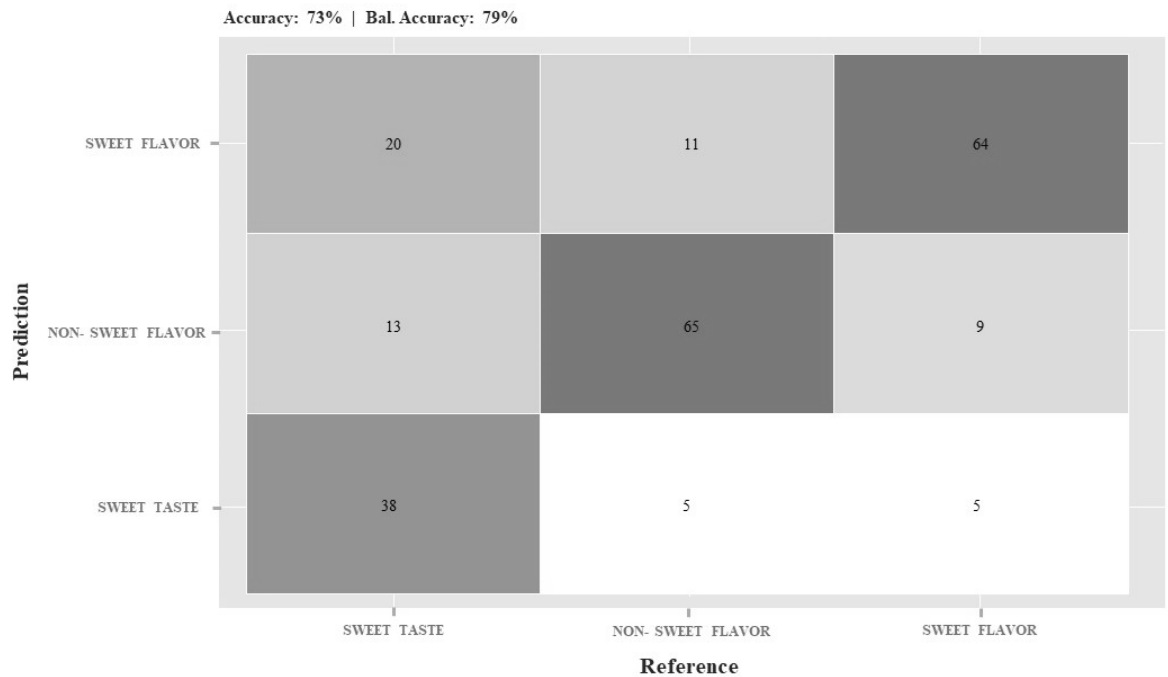


Figure S3b. Confusion matrix of the descriptive model shown in Figure S3a.

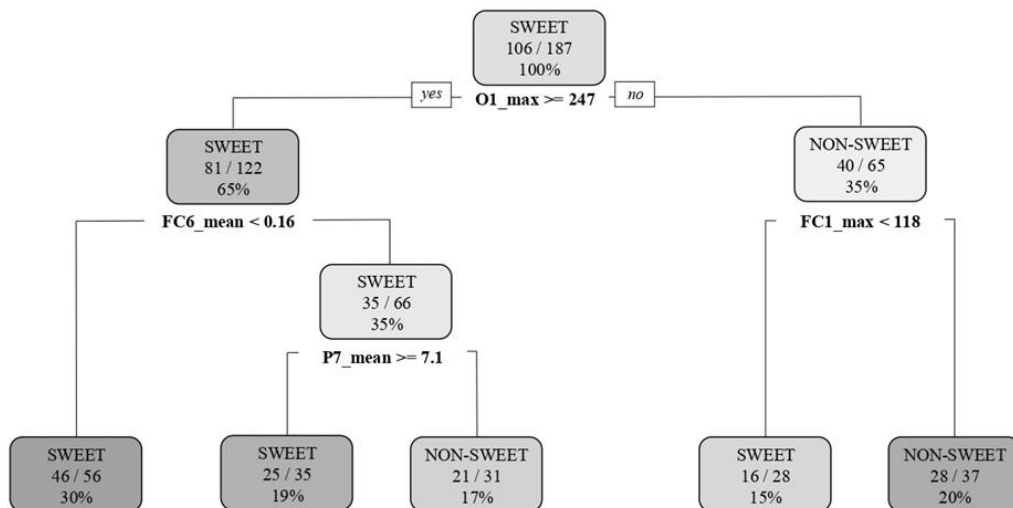


Figure S4a. Decision tree of sweet (sweet odor, sweet taste & sweet flavor) vs. non-sweet (non-sweet odor & non-sweet flavor) discrimination task.

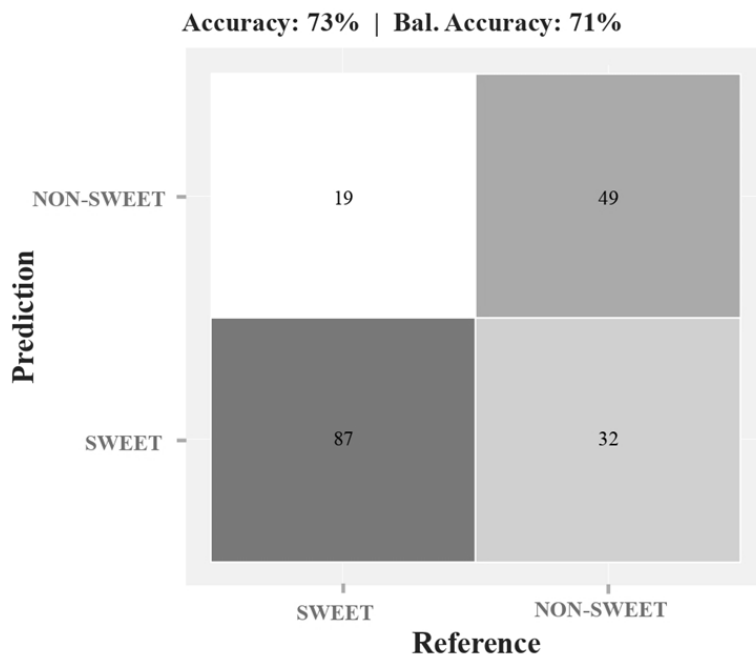


Figure S4b. Confusion matrix of the descriptive model shown in Figure S4a.