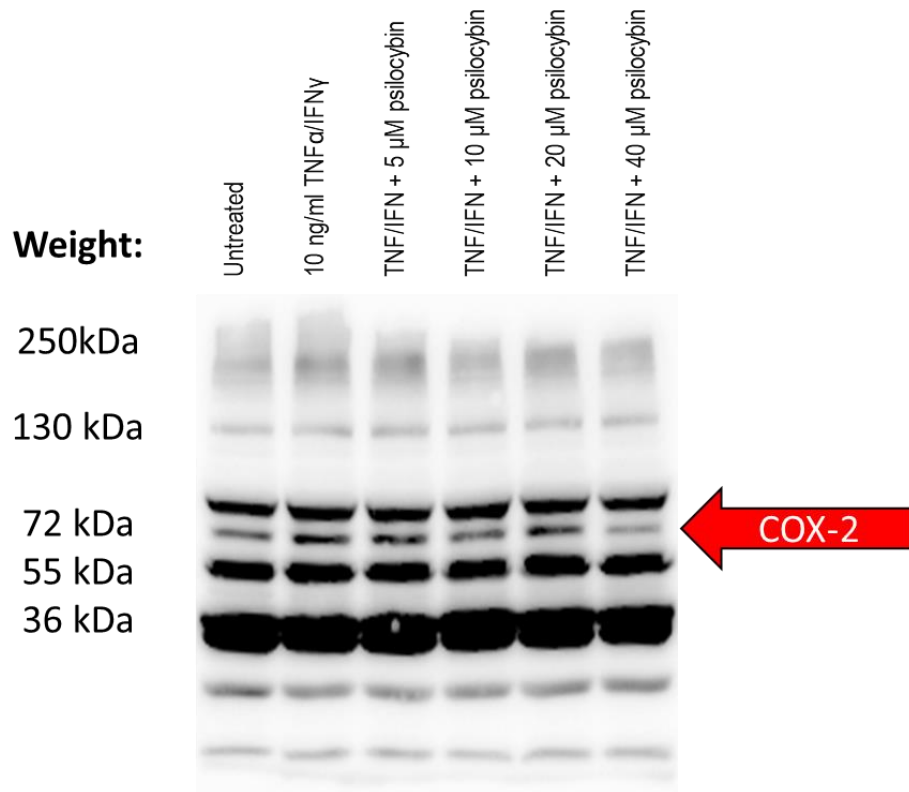


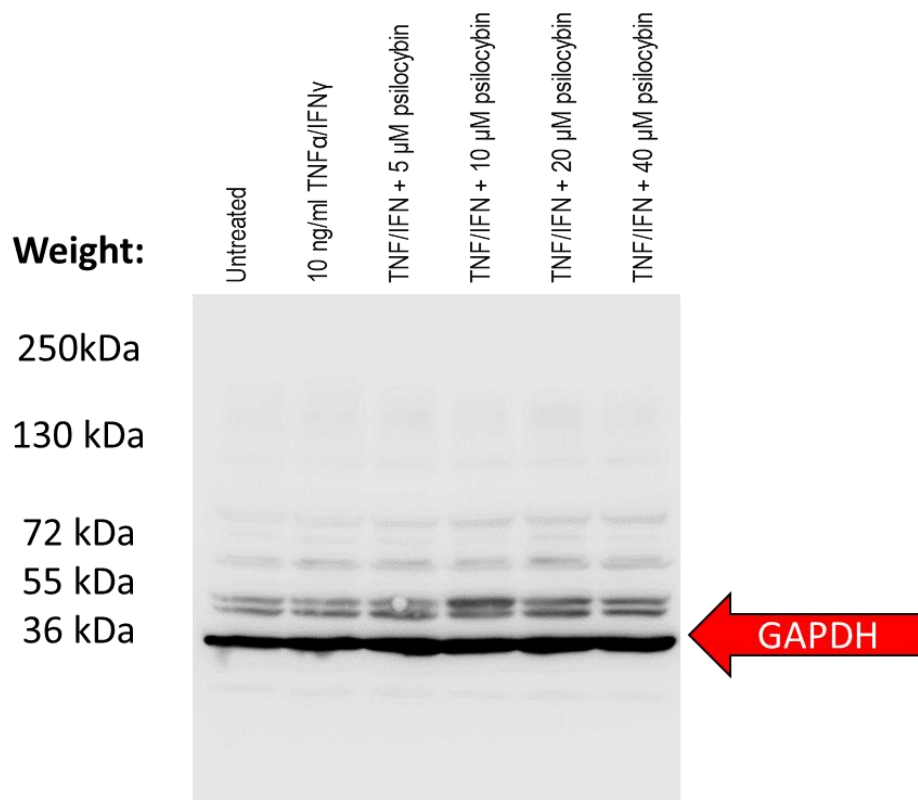
Supplementary Materials

# COX-2 (72 kDa) in Figure 6A



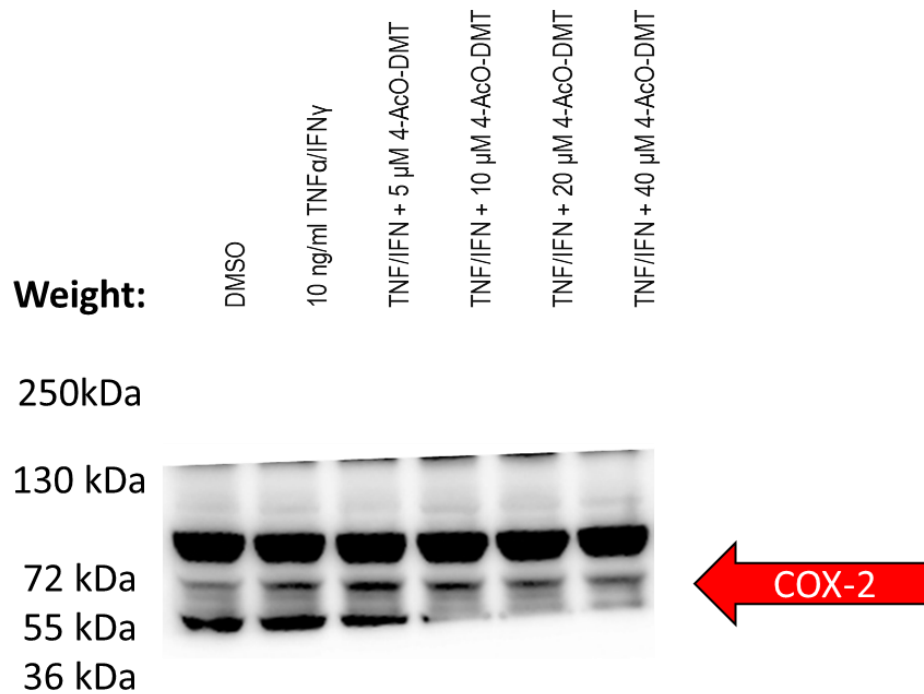
**Figure S1.** Original Western blots of HSEIC proteins showing COX-2 at molecular weight of 72 kDa. Red arrow indicates bands shown in Figure 6A.

# GAPDH (36 kDa) in Figure 6A



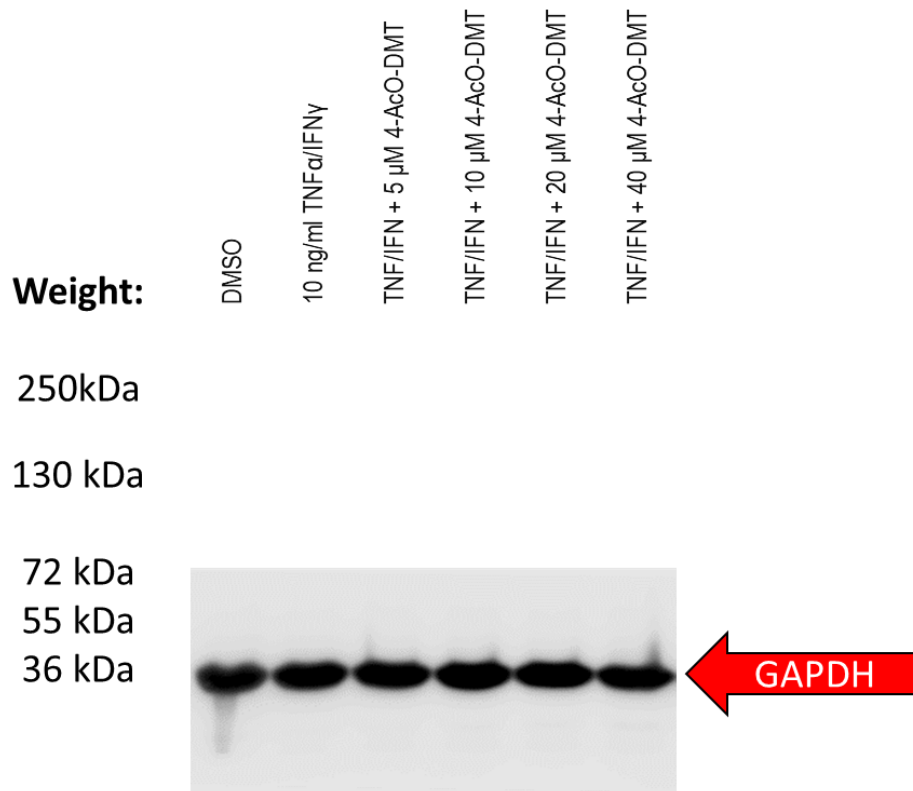
**Figure S2.** Original Western blots of HSEIC proteins showing GAPDH at molecular weight of 36 kDa. Red arrow indicates bands shown in Figure 6A.

# COX-2 (72 kDa) in Figure 6B



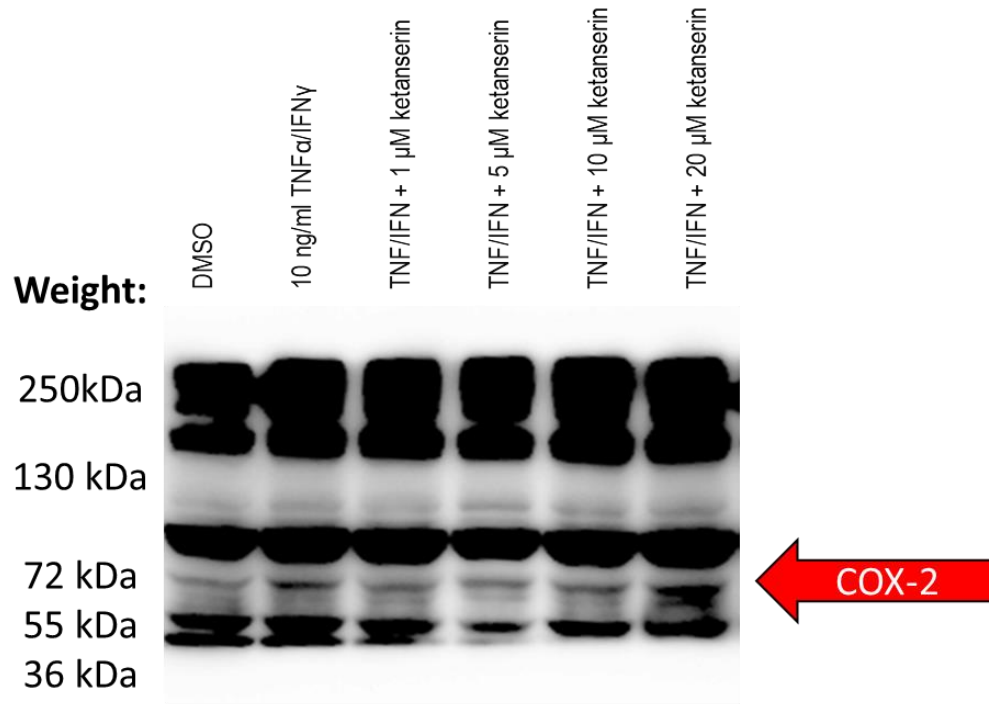
**Figure S3.** Original Western blots of HSEIC proteins showing COX-2 at molecular weight of 72 kDa. Red arrow indicates bands shown in Figure 6B. This blot membrane has been cut into pieces. Each membrane received different exposure times, and the images were taken separately.

# GAPDH (36 kDa) in Figure 6B



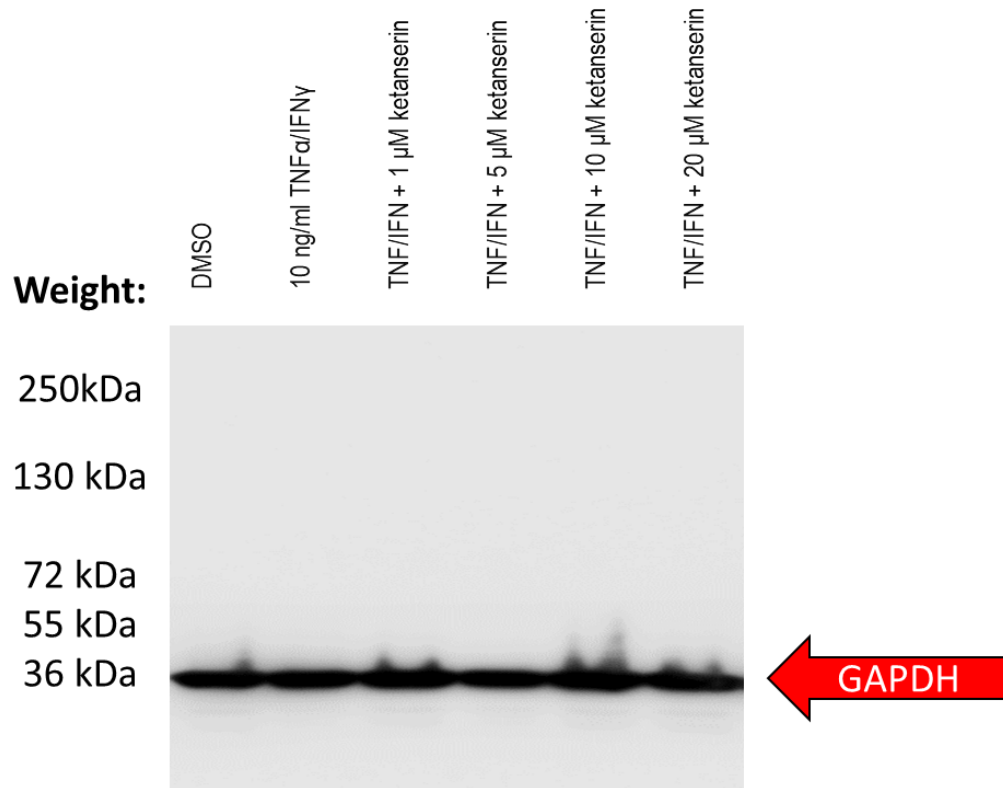
**Figure S4.** Original Western blots of HSEIC proteins showing GAPDH at molecular weight of 36 kDa. Red arrow indicates bands shown in Figure 6B. This blot membrane has been cut into pieces. Each membrane received different exposure times, and the images were taken separately.

# COX-2 (72 kDa) in Figure 6C



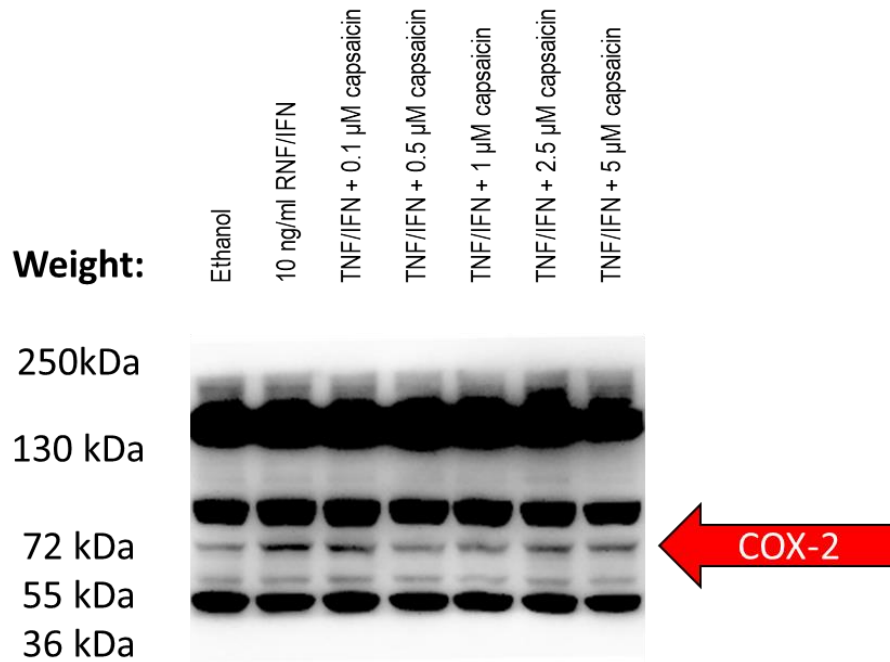
**Figure S5.** Original Western blots of HSEIC proteins showing COX-2 at molecular weight of 72 kDa. Red arrow indicates bands shown in Figure 6C.

# GAPDH (36 kDa) in Figure 6C



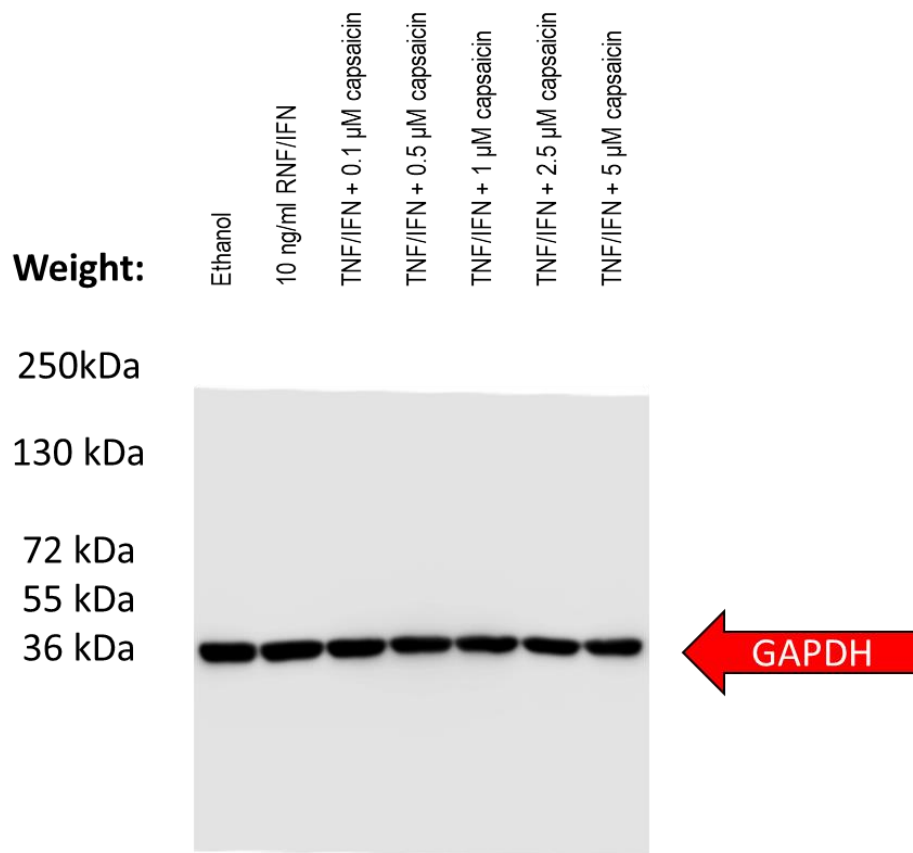
**Figure S6.** Original Western blots of HSEIC proteins showing GAPDH at molecular weight of 36 kDa. Red arrow indicates bands shown in Figure 6C.

# COX-2 (72 kDa) in Figure 6D



**Figure S7.** Original Western blots of HSEIC proteins showing COX-2 at molecular weight of 72 kDa. Red arrow indicates bands shown in Figure 6D.

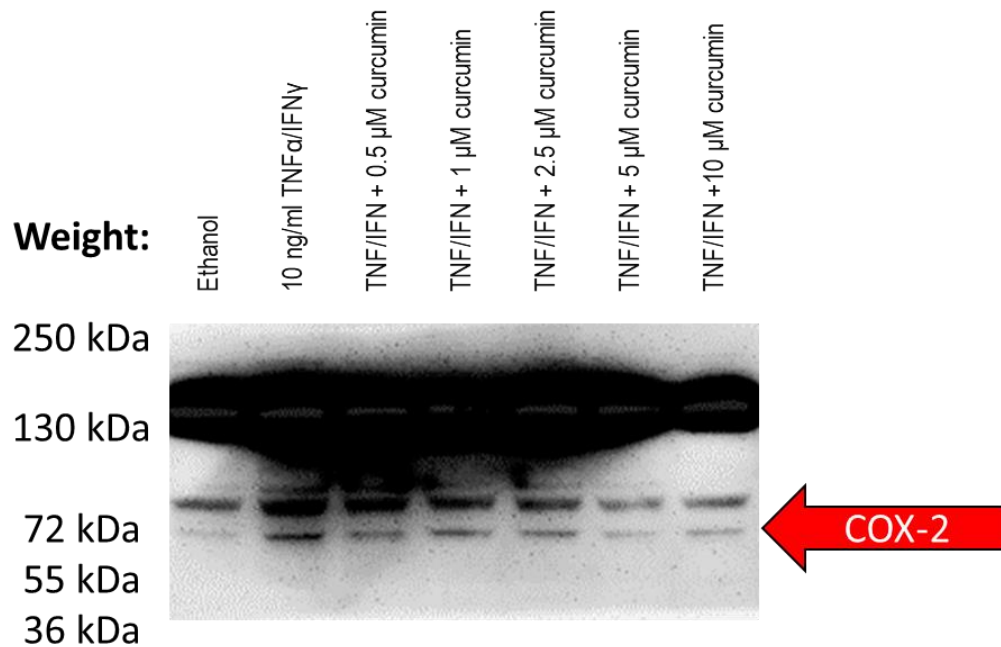
# GAPDH (36 kDa) in Figure 6D



**Figure S8.** Original Western blots of HSEIC proteins showing GAPDH at molecular weight of 36 kDa. Red arrow indicates bands shown in Figure 6D.

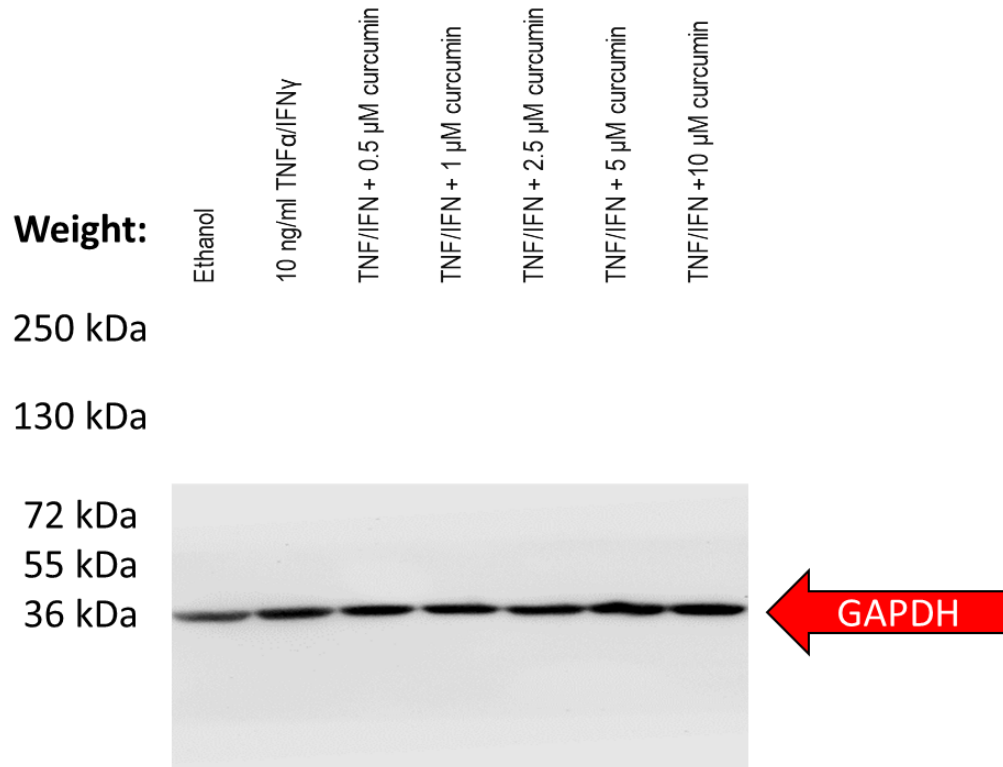


# COX-2 (72 kDa) in Figure 6E



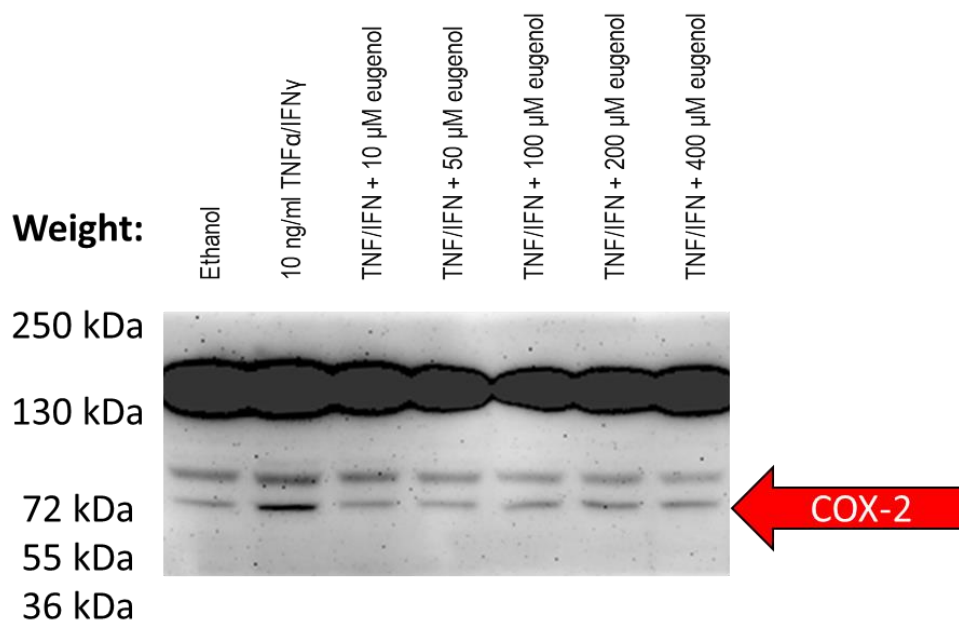
**Figure S9.** Original Western blots of HSEIC proteins showing COX-2 at molecular weight of 72 kDa. Red arrow indicates bands shown in Figure 6E. This blot membrane has been cut into pieces. Each membrane received different exposure times, and the images were taken separately.

# GAPDH (36 kDa) in Figure 6E



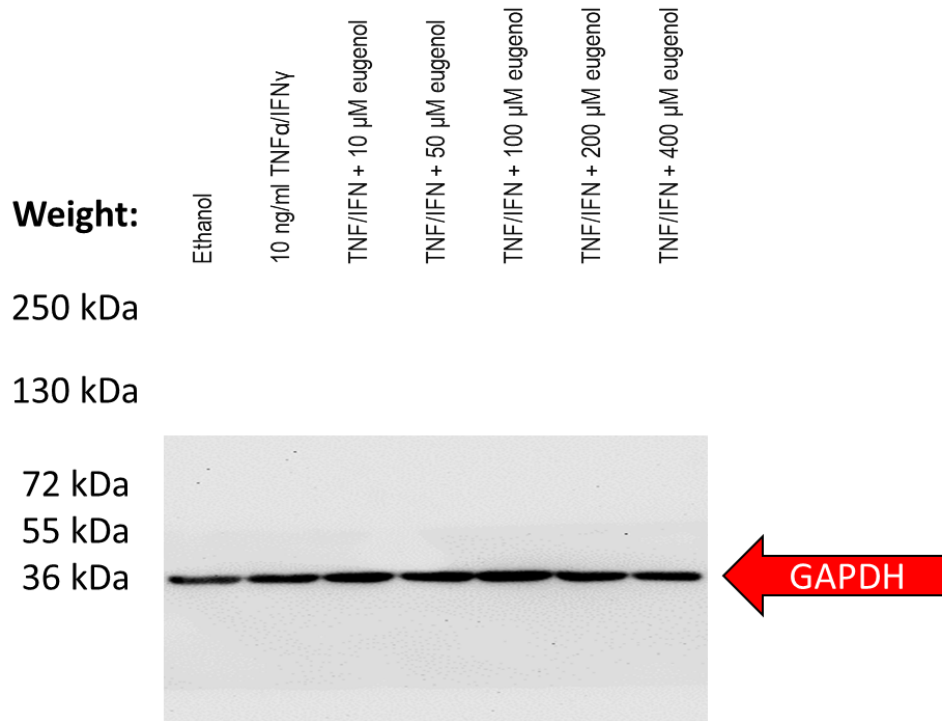
**Figure S10.** Original Western blots of HSEIC proteins showing GAPDH at molecular weight of 36 kDa. Red arrow indicates bands shown in Figure 6E. This blot membrane has been cut into pieces. Each membrane received different exposure times, and the images were taken separately.

# COX-2 (72 kDa) in Figure 6F



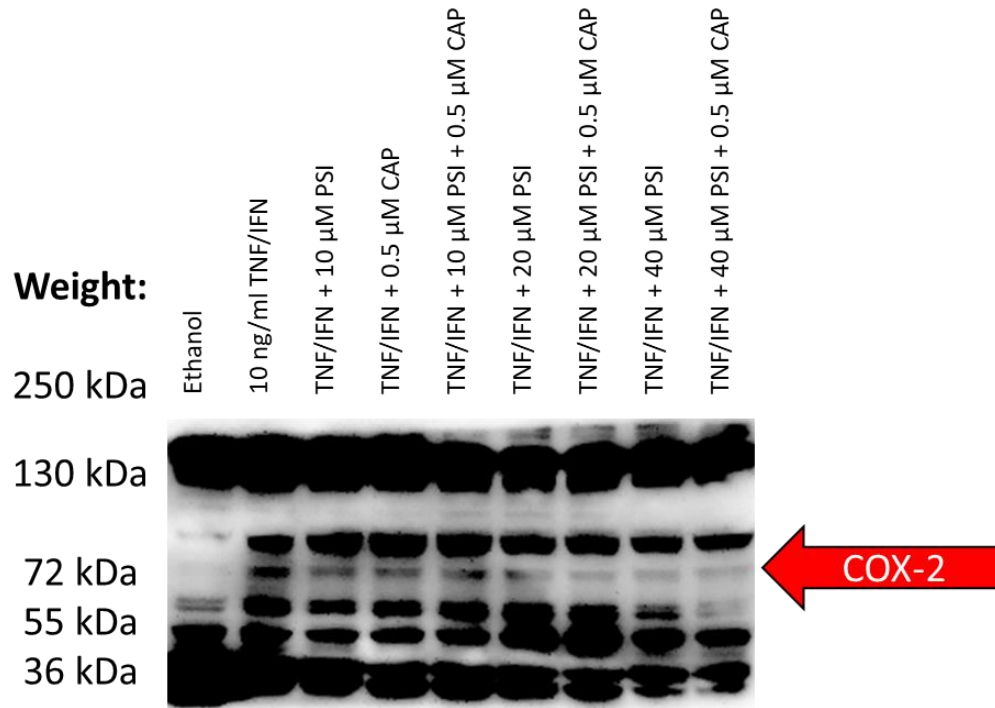
**Figure S11.** Original Western blots of HSEIC proteins showing COX-2 at molecular weight of 72 kDa. Red arrow indicates bands shown in Figure 6F. This blot membrane has been cut into pieces. Each membrane received different exposure times, and the images were taken separately.

# GAPDH (36 kDa) in Figure 6F



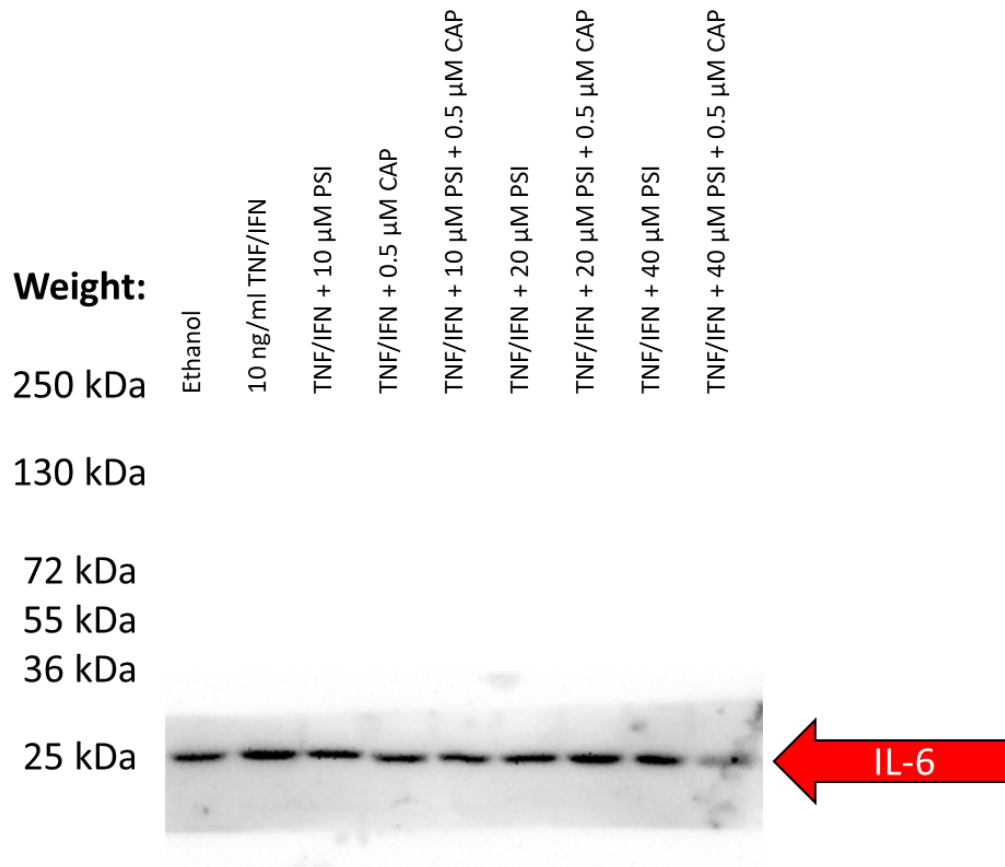
**Figure S12.** Original Western blots of HSEIC proteins showing GAPDH at molecular weight of 36 kDa. Red arrow indicates bands shown in Figure 6F. This blot membrane has been cut into pieces. Each membrane received different exposure times, and the images were taken separately.

# COX-2 (72 kDa) in Figure 7C



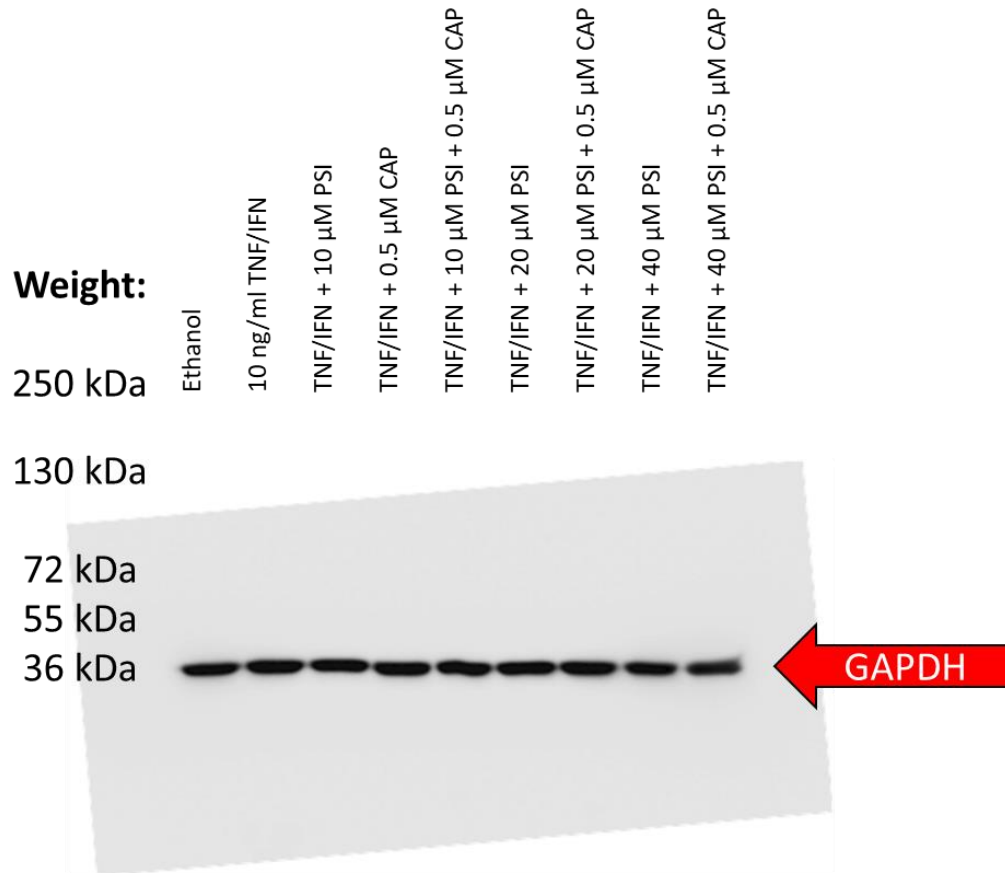
**Figure S13.** Original Western blots of HSEIC proteins showing COX-2 at molecular weight of 72 kDa. Red arrow indicates bands shown in Figure 7C. This blot membrane has been cut into pieces. Each membrane received different exposure times, and the images were taken separately.

# IL-6 (21 kDa) in Figure 7C



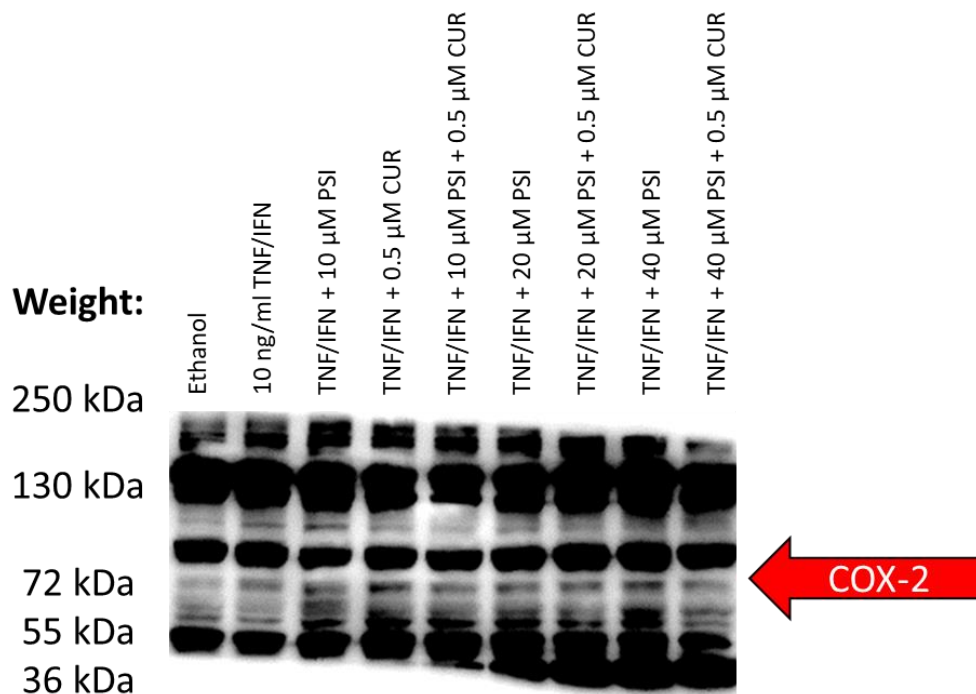
**Figure S14.** Original Western blots of HSEIC proteins showing IL-6 at molecular weight of 21 kDa. Red arrow indicates bands shown in Figure 7C. This blot membrane has been cut into pieces. Each membrane received different exposure times, and the images were taken separately.

# GAPDH (36 kDa) in Figure 7C



**Figure S15.** Original Western blots of HSEIC proteins showing GAPDH at molecular weight of 36 kDa. Red arrow indicates bands shown in Figure 7C. This blot membrane has been cut into pieces. Each membrane received different exposure times, and the images were taken separately.

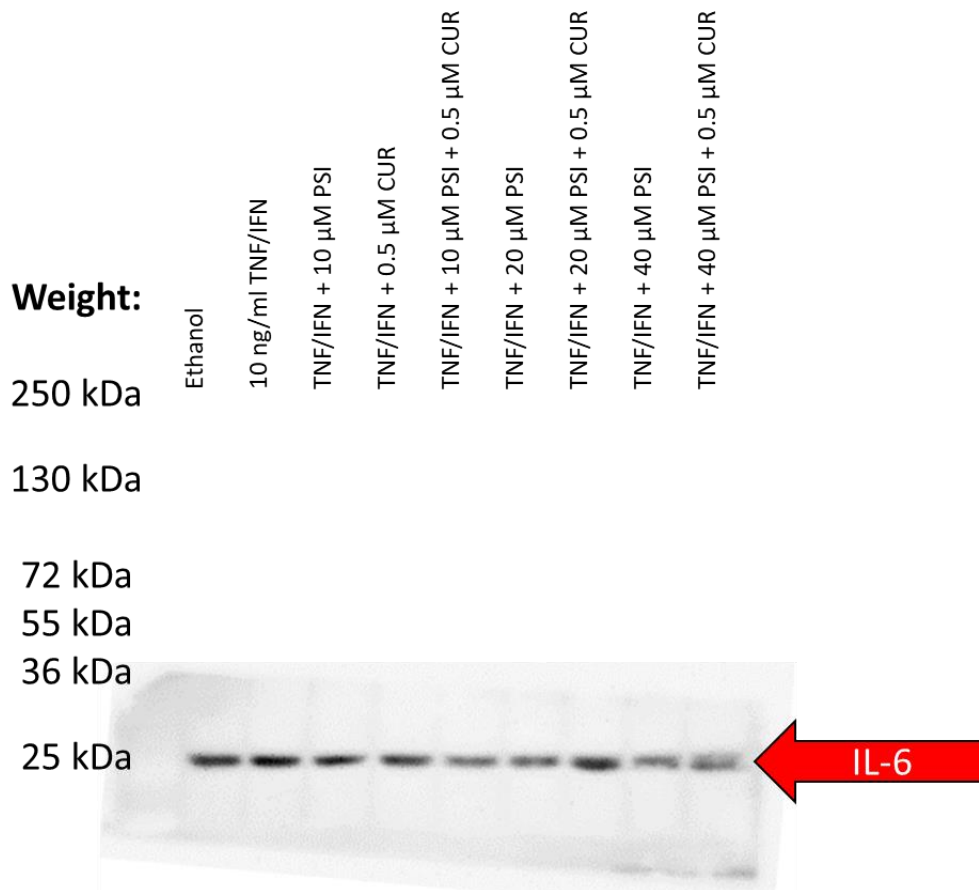
# COX-2 (72 kDa) in Figure 8C



**Figure S16.** Original Western blots of HSEIC proteins showing COX-2 at molecular weight of 72 kDa. Red arrow indicates bands shown in Figure 8C. This blot membrane has been cut into pieces. Each membrane received different exposure times, and the images were taken separately.

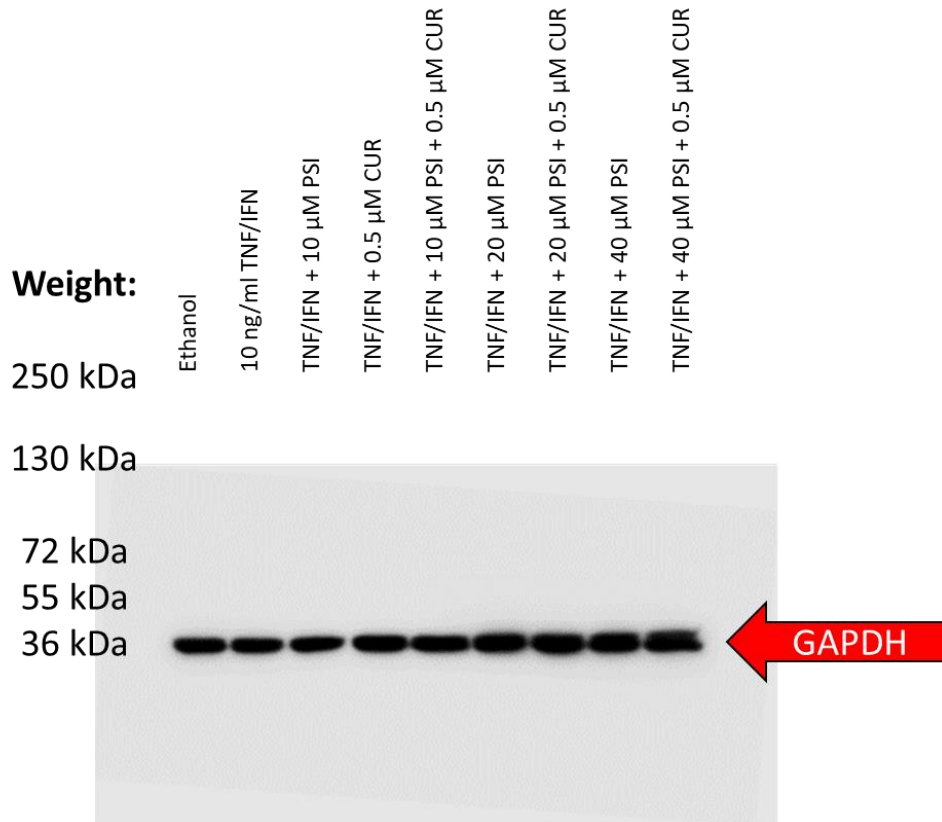


# IL-6 (25 kDa) in Figure 8C



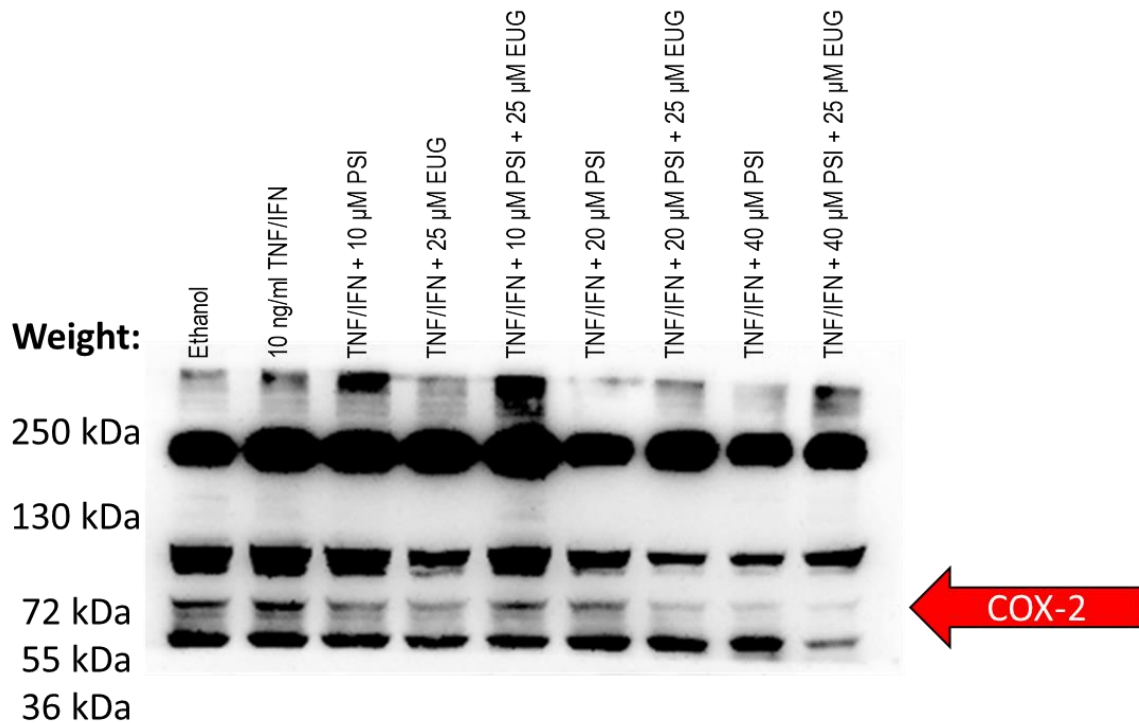
**Figure S17.** Original Western blots of HSEIC proteins showing IL-6 at molecular weight of 21 kDa. Red arrow indicates bands shown in Figure 8C. This blot membrane has been cut into pieces. Each membrane received different exposure times, and the images were taken separately.

# GAPDH (36 kDa) in Figure 8C



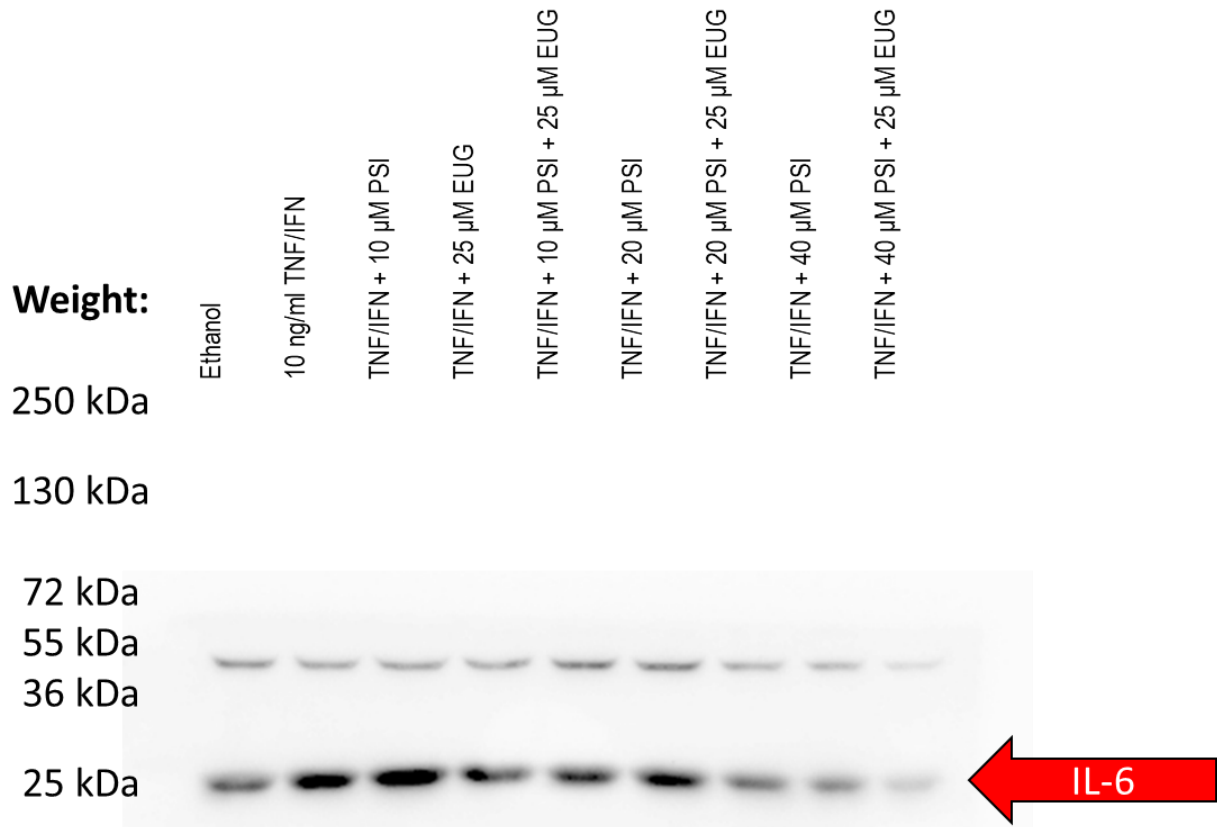
**Figure S18.** Original Western blots of HSEIC proteins showing GAPDH at molecular weight of 36 kDa. Red arrow indicates bands shown in Figure 8C. This blot membrane has been cut into pieces. Each membrane received different exposure times, and the images were taken separately.

# COX-2 (72 kDa) in Figure 9C



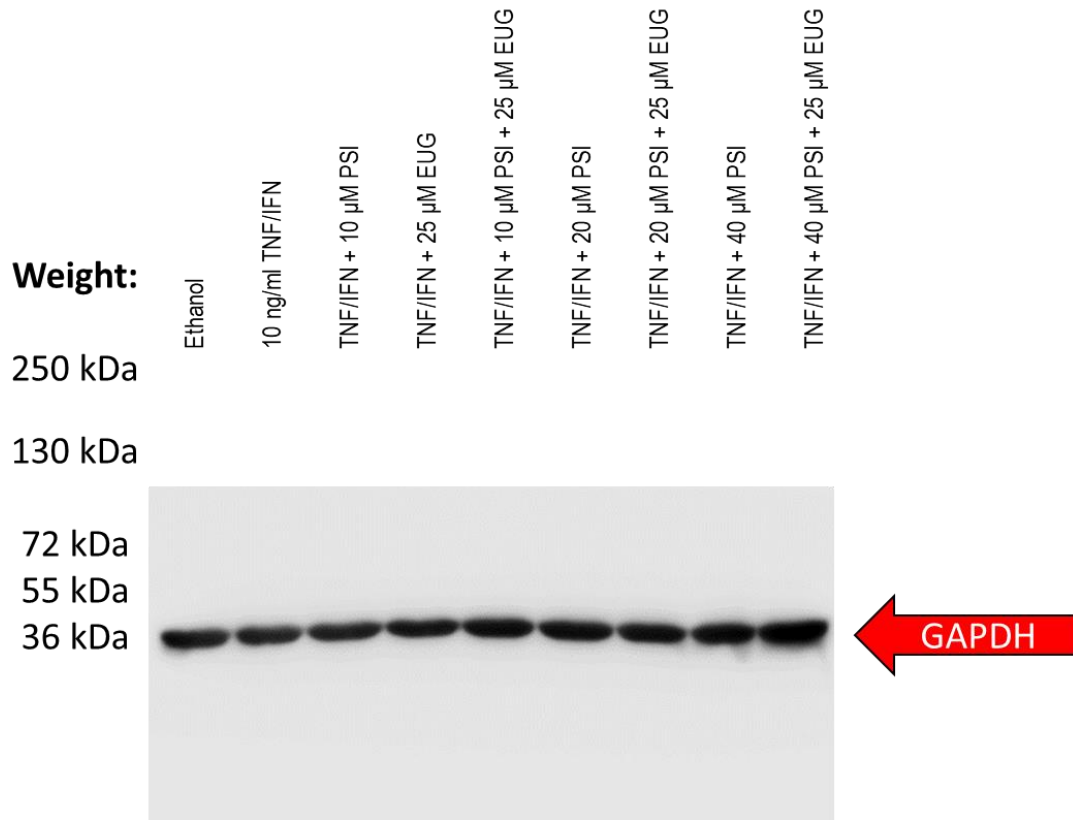
**Figure S19.** Original Western blots of HSEIC proteins showing COX-2 at molecular weight of 72 kDa. Red arrow indicates bands shown in Figure 9C. This blot membrane has been cut into pieces. Each membrane received different exposure times, and the images were taken separately.

# IL-6 (25 kDa) in Figure 9C



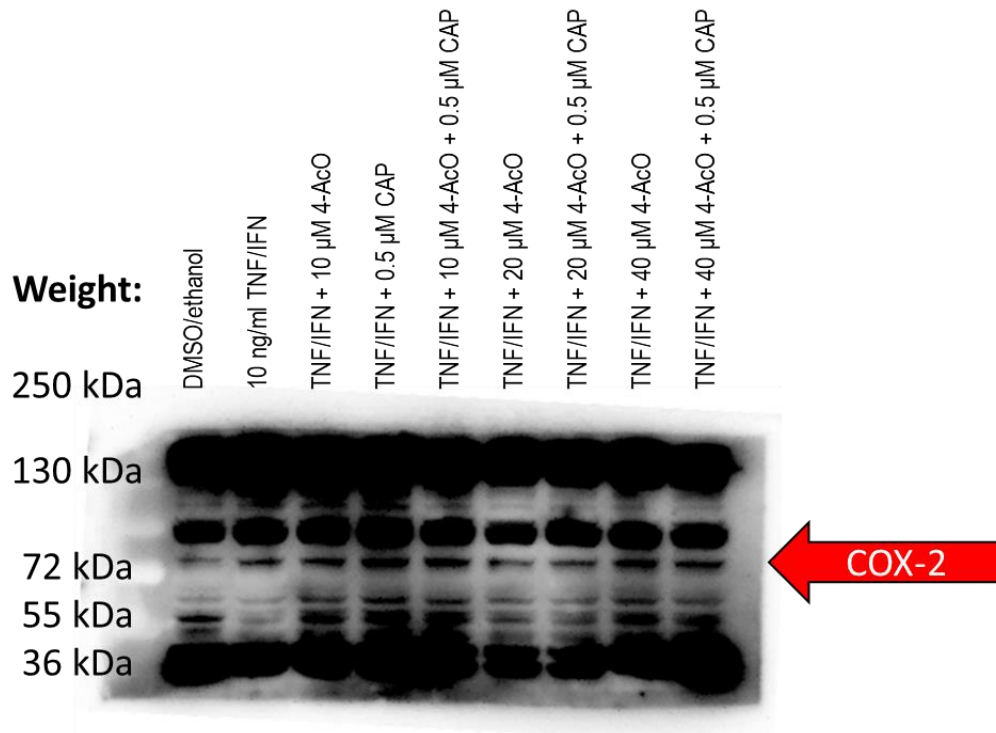
**Figure S20.** Original Western blots of HSEIC proteins showing IL-6 at molecular weight of 21 kDa. Red arrow indicates bands shown in Figure 9C. This blot membrane has been cut into pieces. Each membrane received different exposure times, and the images were taken separately.

# GAPDH (36 kDa) in Figure 9C



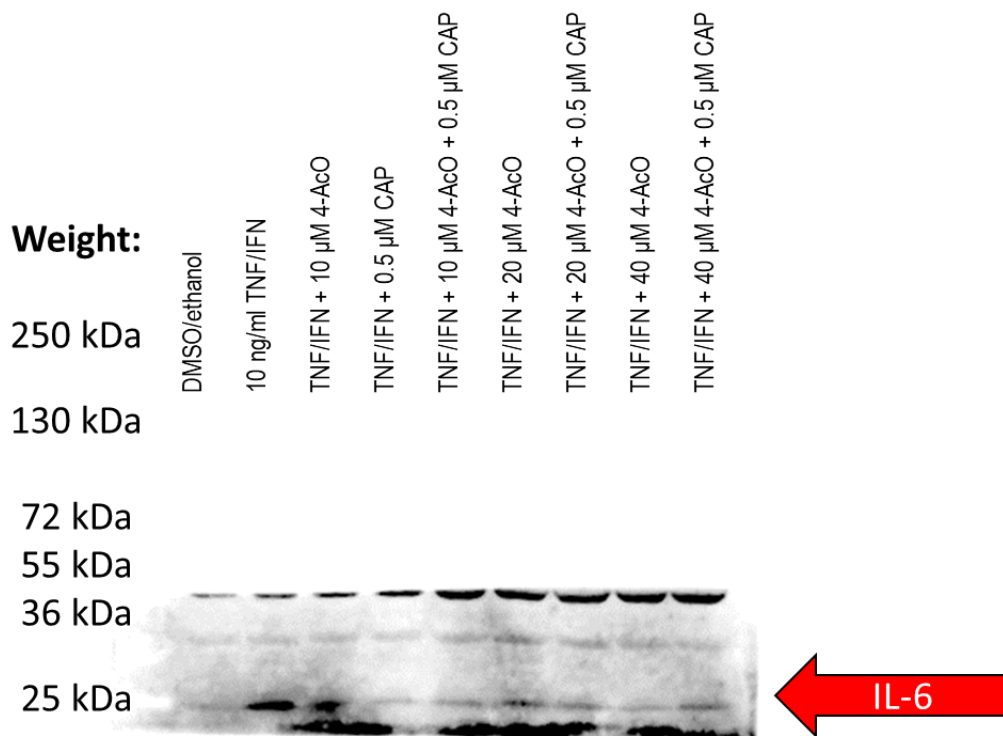
**Figure S21.** Original Western blots of HSEIC proteins showing GAPDH at molecular weight of 36 kDa. Red arrow indicates bands shown in Figure 9C. This blot membrane has been cut into pieces. Each membrane received different exposure times, and the images were taken separately.

# COX-2 (72 kDa) in Figure 10C



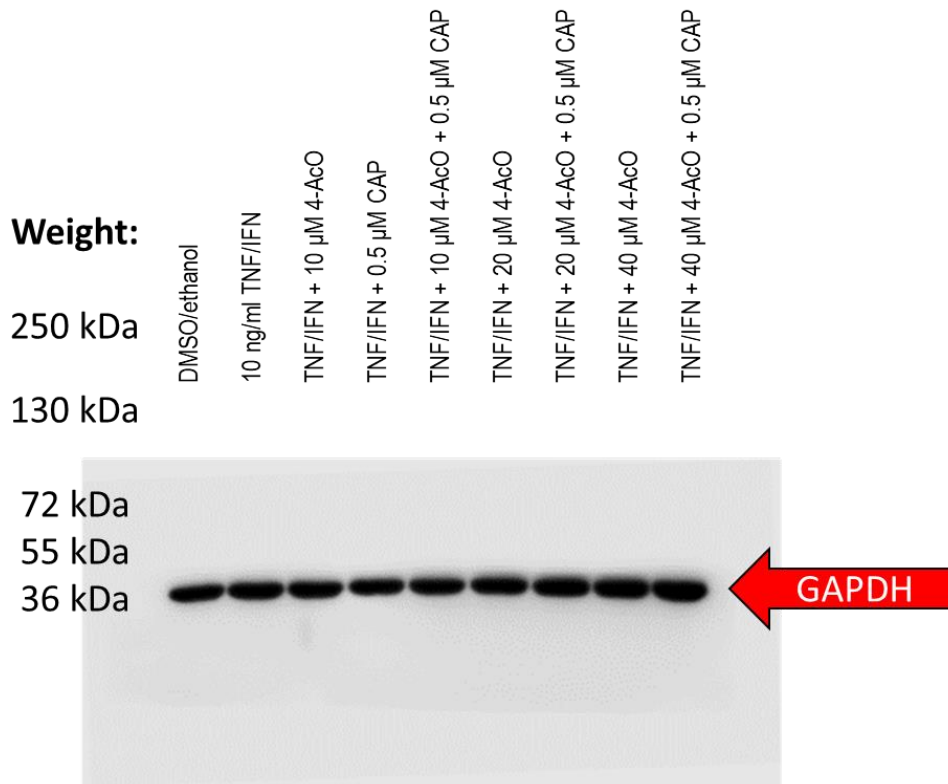
**Figure S22.** Original Western blots of HSEIC proteins showing COX-2 at molecular weight of 72 kDa. Red arrow indicates bands shown in Figure 10C. This blot membrane has been cut into pieces. Each membrane received different exposure times, and the images were taken separately.

# IL-6 (25 kDa) in Figure 10C



**Figure S23.** Original Western blots of HSEIC proteins showing IL-6 at molecular weight of 21 kDa. Red arrow indicates bands shown in Figure 10C. This blot membrane has been cut into pieces. Each membrane received different exposure times, and the images were taken separately.

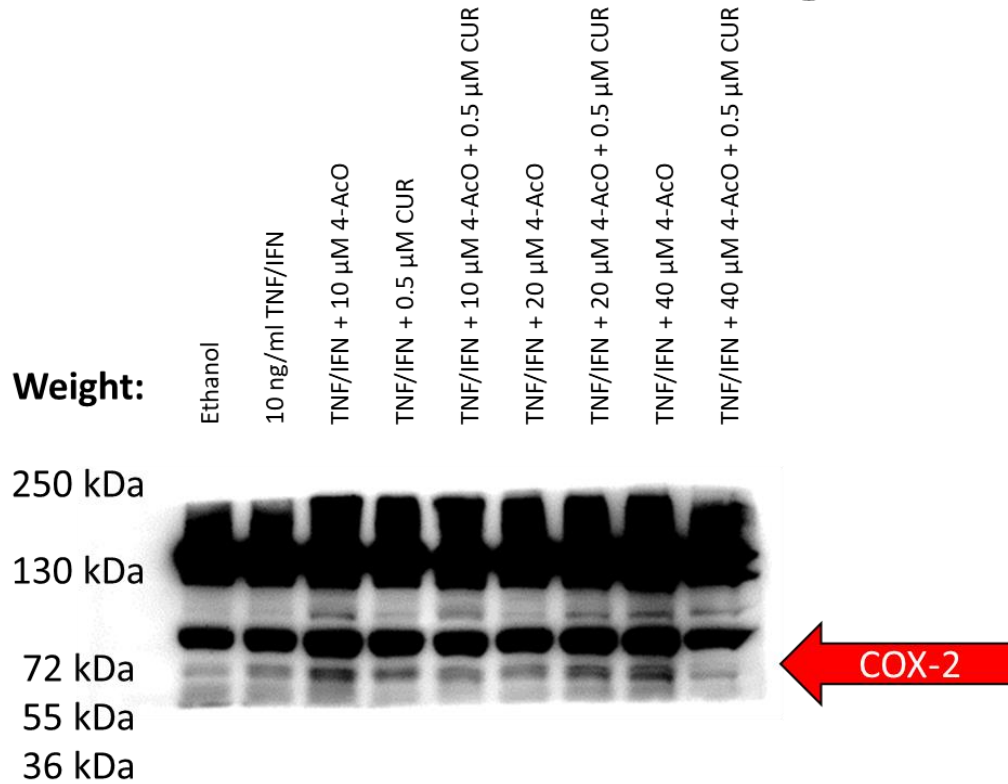
# GAPDH (36 kDa) in Figure 10C



**Figure S24.** Original Western blots of HSEIC proteins showing GAPDH at molecular weight of 36 kDa. Red arrow indicates bands shown in Figure 10C. This blot membrane has been cut into pieces. Each membrane received different exposure times, and the images were taken separately.

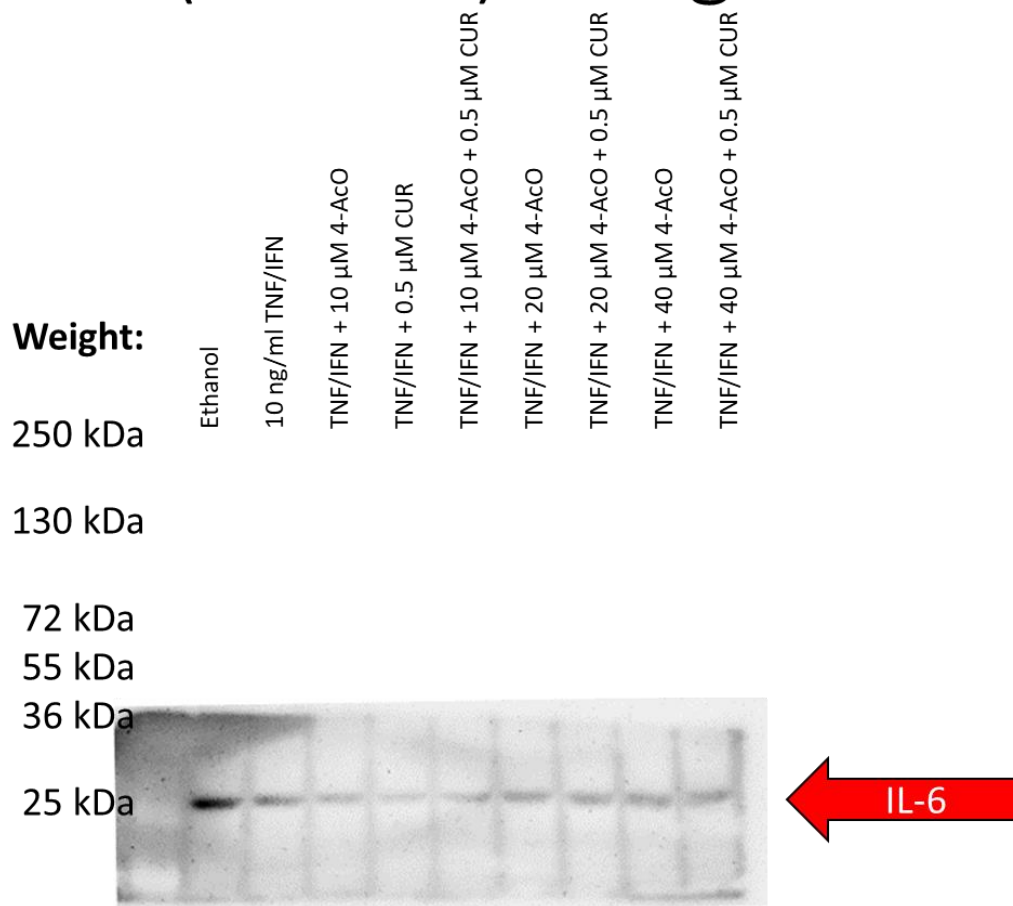


# COX-2 (72 kDa) in Figure 11C



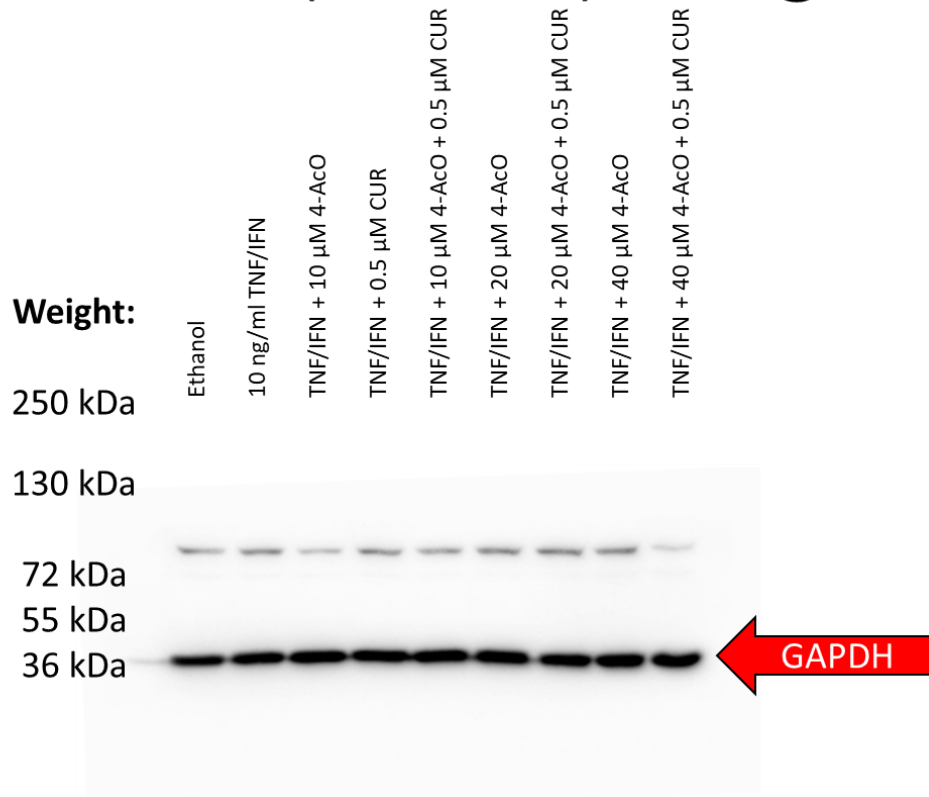
**Figure S25.** Original Western blots of HSEIC proteins showing COX-2 at molecular weight of 72 kDa. Red arrow indicates bands shown in Figure 11C. This blot membrane has been cut into pieces. Each membrane received different exposure times, and the images were taken separately.

# IL-6 (25 kDa) in Figure 11C



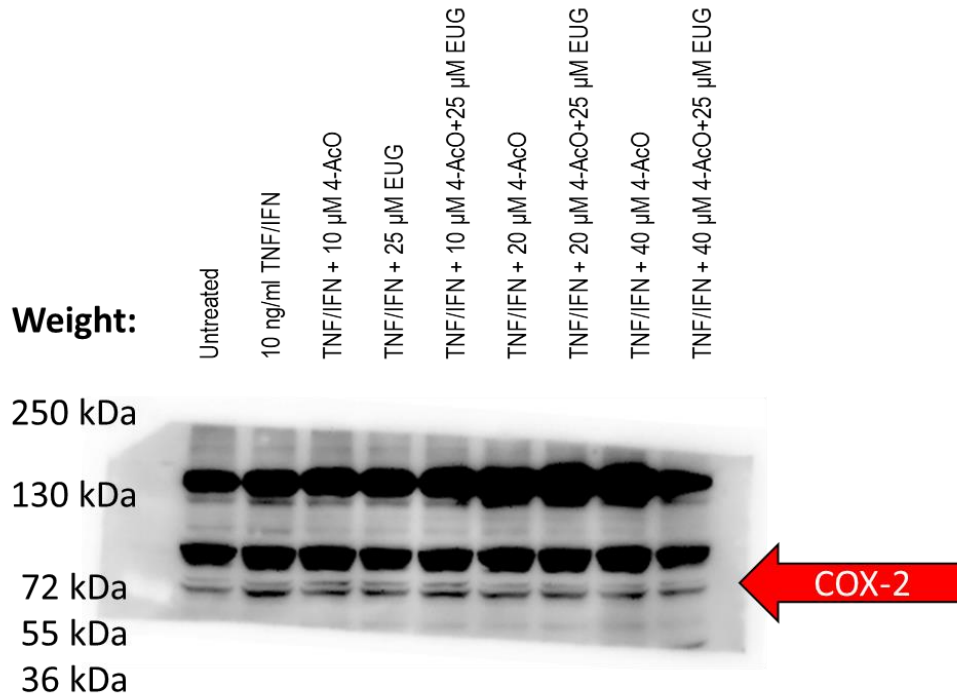
**Figure S26.** Original Western blots of HSEIC proteins showing IL-6 at molecular weight of 21 kDa. Red arrow indicates bands shown in Figure 11C. This blot membrane has been cut into pieces. Each membrane received different exposure times, and the images were taken separately.

# GAPDH (36 kDa) in Figure 11C



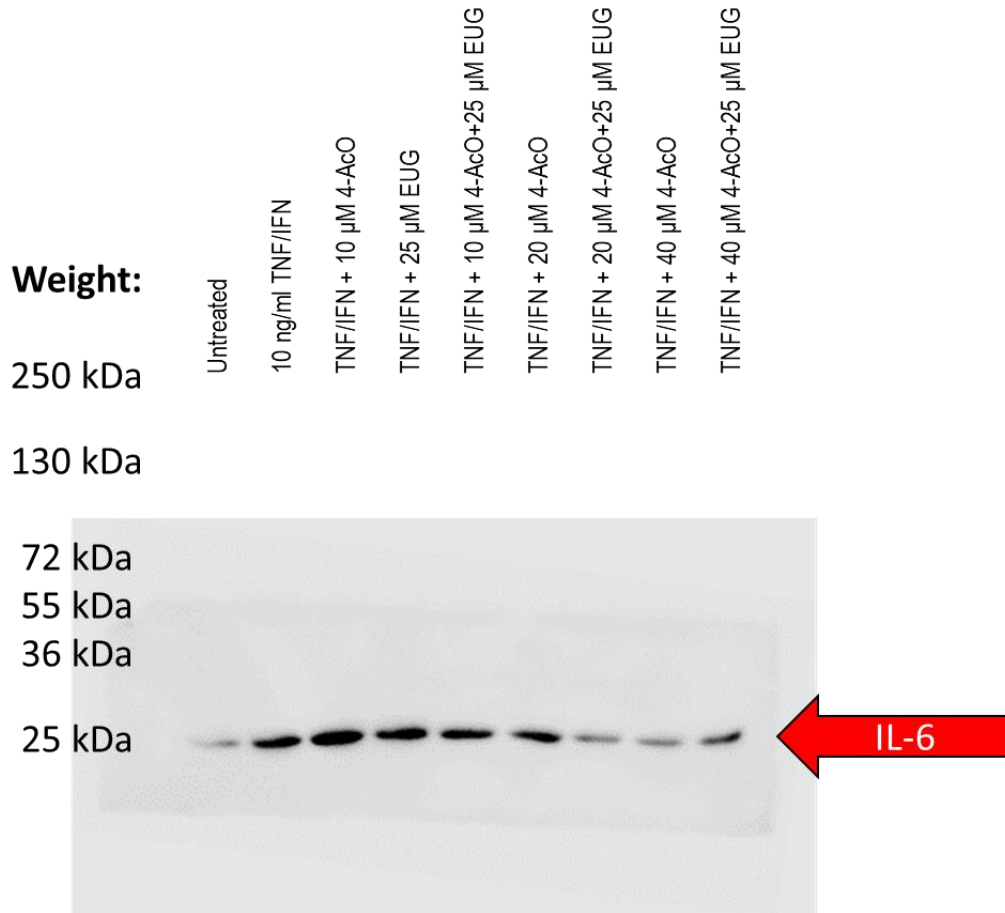
**Figure S27.** Original Western blots of HSEIC proteins showing GAPDH at molecular weight of 36 kDa. Red arrow indicates bands shown in Figure 11C. This blot membrane has been cut into pieces. Each membrane received different exposure times, and the images were taken separately.

# COX-2 (72 kDa) in Figure 12C



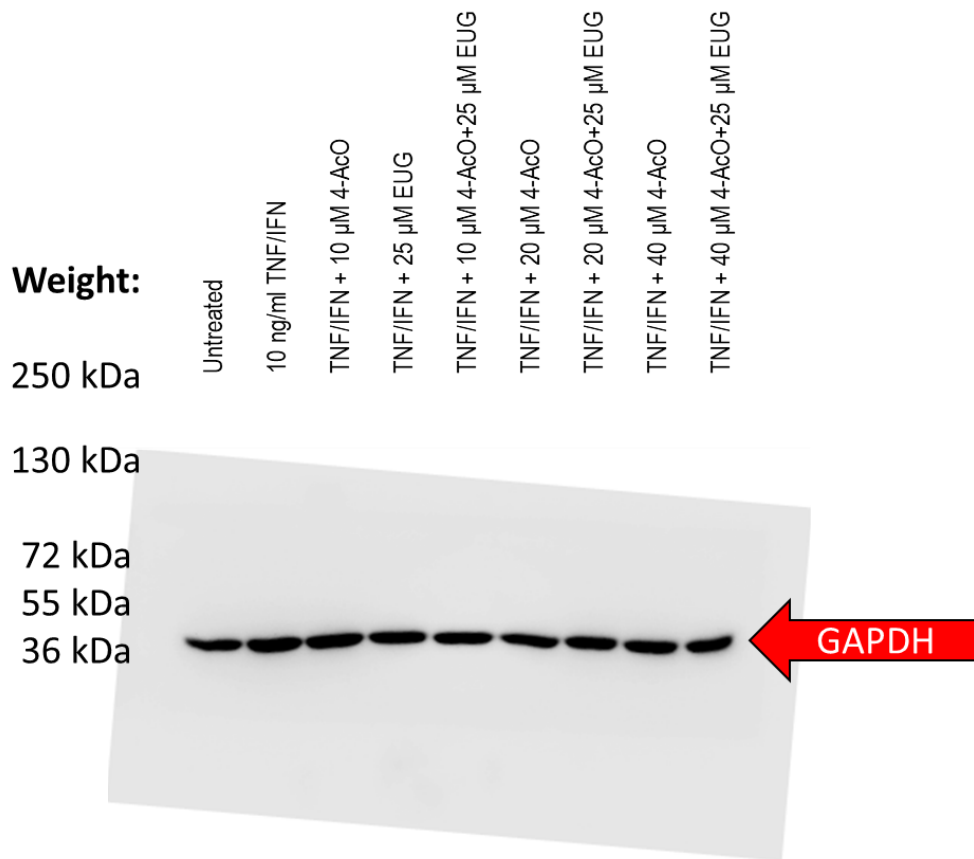
**Figure S28.** Original Western blots of HSEIC proteins showing COX-2 at molecular weight of 72 kDa. Red arrow indicates bands shown in Figure 12C. This blot membrane has been cut into pieces. Each membrane received different exposure times, and the images were taken separately.

# IL-6 (25 kDa) in Figure 12C



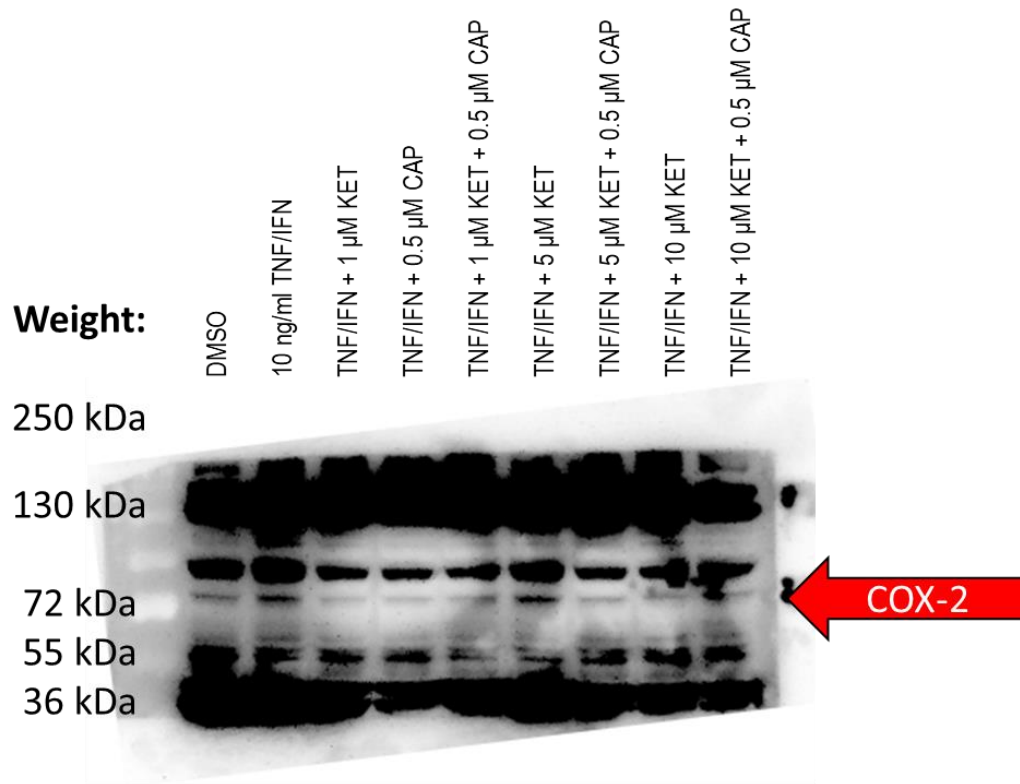
**Figure S29.** Original Western blots of HSEIC proteins showing IL-6 at molecular weight of 21 kDa. Red arrow indicates bands shown in Figure 12C. This blot membrane has been cut into pieces. Each membrane received different exposure times, and the images were taken separately.

# GAPDH (36 kDa) in Figure 12C



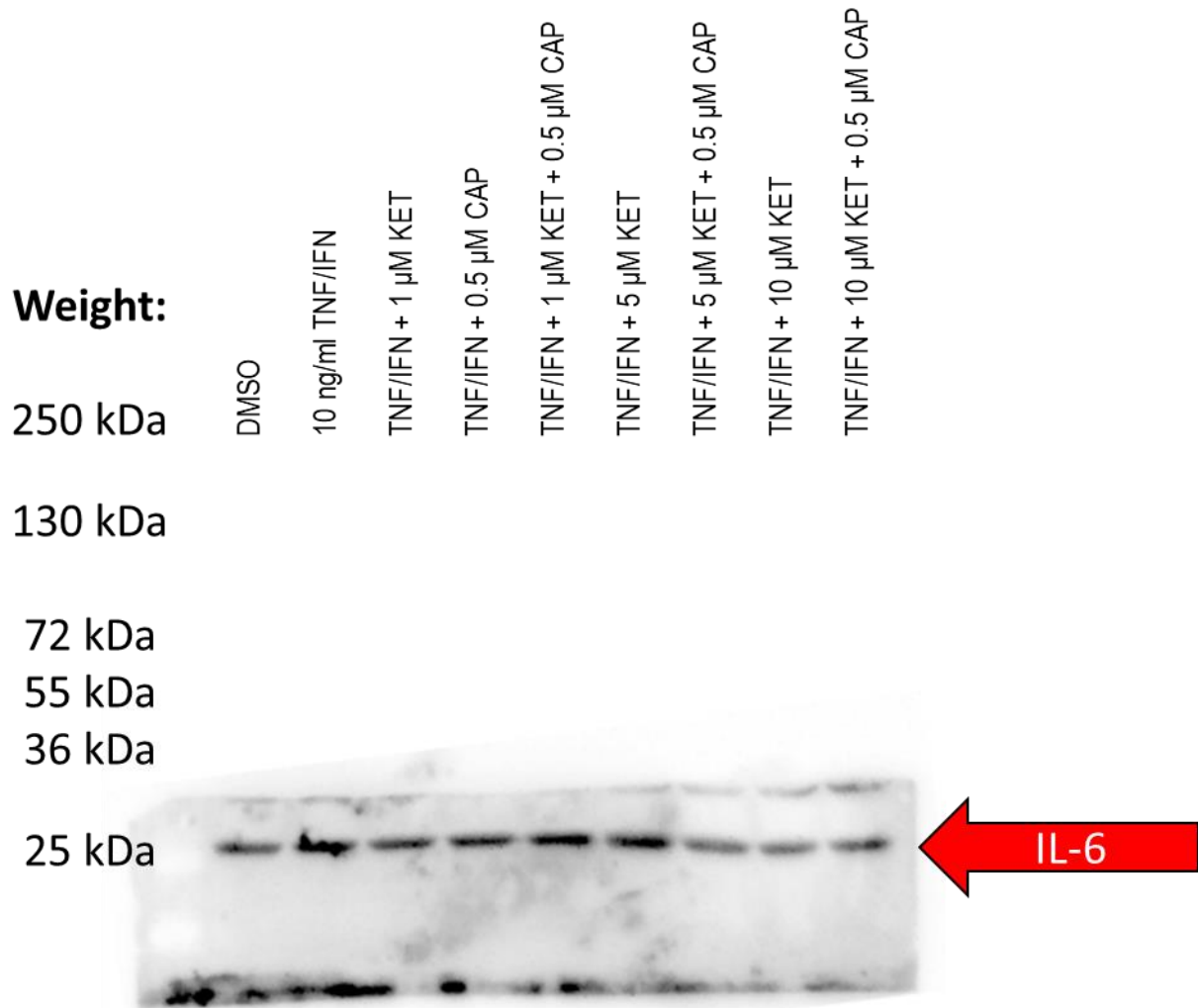
**Figure S30.** Original Western blots of HSEIC proteins showing GAPDH at molecular weight of 36 kDa. Red arrow indicates bands shown in Figure 12C. This blot membrane has been cut into pieces. Each membrane received different exposure times, and the images were taken separately.

# COX-2 (72 kDa) in Figure 13C



**Figure S31.** Original Western blots of HSEIC proteins showing COX-2 at molecular weight of 72 kDa. Red arrow indicates bands shown in Figure 13C. This blot membrane has been cut into pieces. Each membrane received different exposure times, and the images were taken separately.

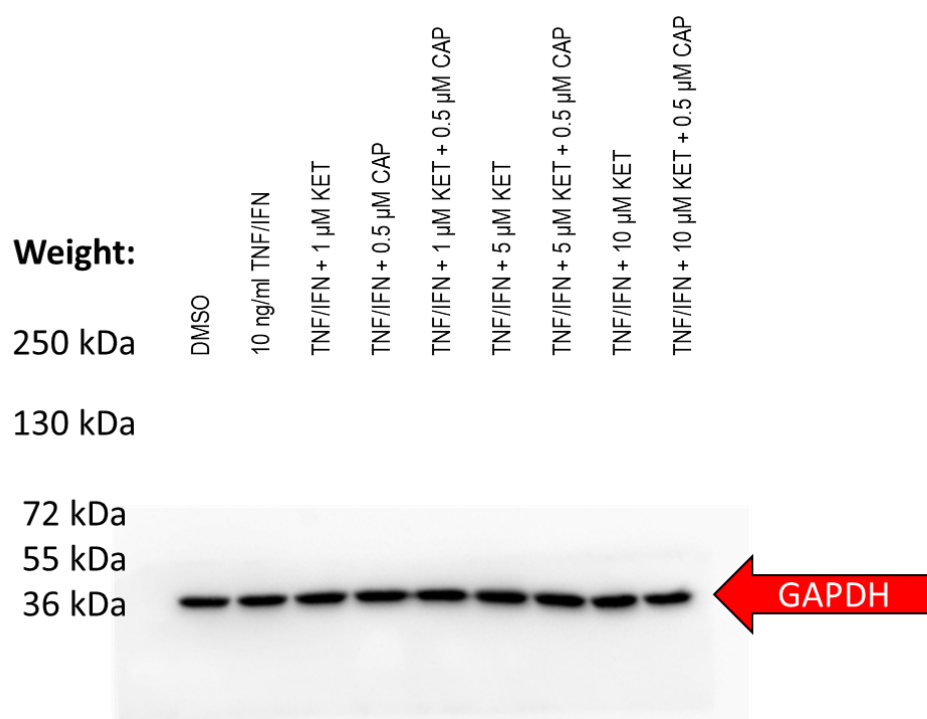
# IL-6 (25 kDa) in Figure 13C



**Figure S32.** Original Western blots of HSEIC proteins showing IL-6 at molecular weight of 21 kDa. Red arrow indicates bands shown in Figure 13C. This blot membrane has been cut into pieces. Each membrane received different exposure times, and the images were taken separately.

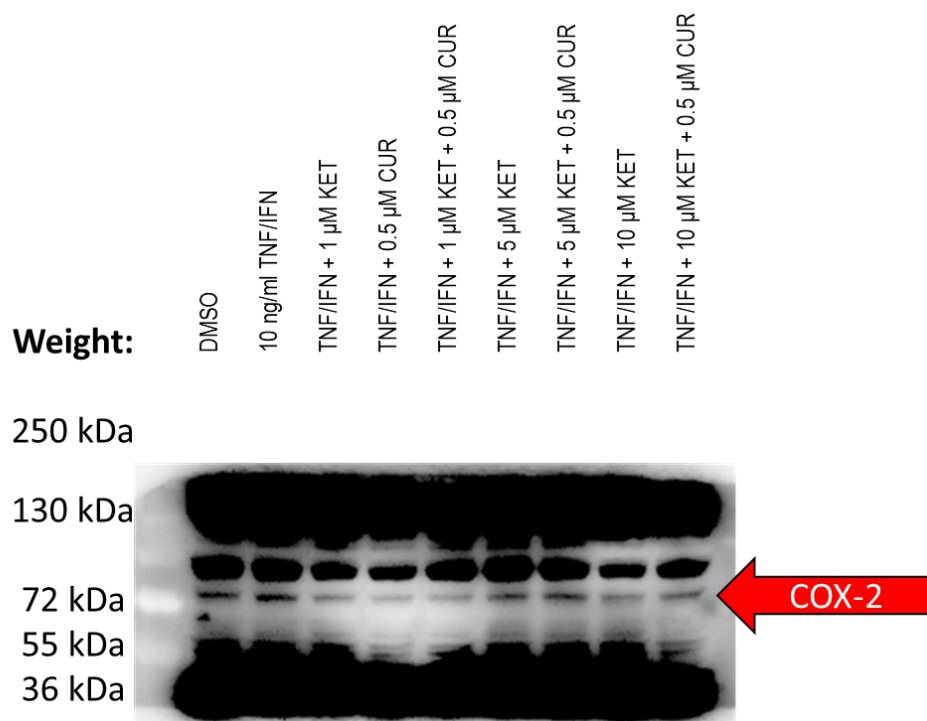


# GAPDH (36 kDa) in Figure 13C



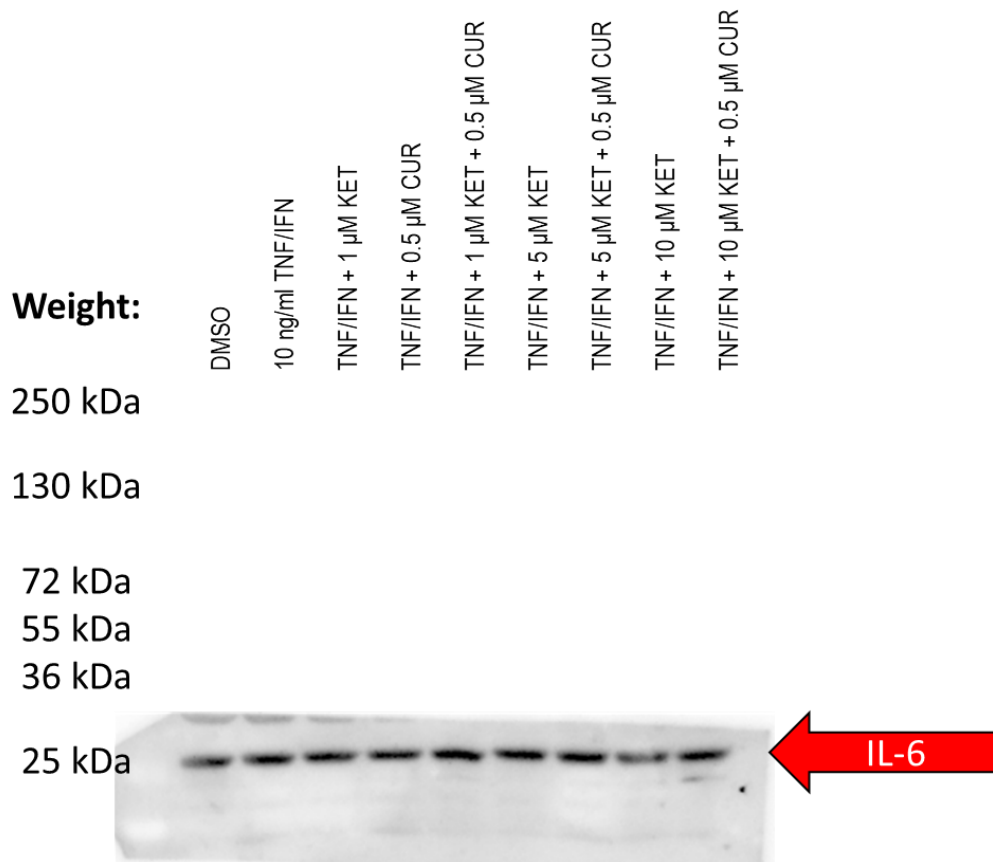
**Figure S33.** Original Western blots of HSEIC proteins showing GAPDH at molecular weight of 36 kDa. Red arrow indicates bands shown in Figure 13C. This blot membrane has been cut into pieces. Each membrane received different exposure times, and the images were taken separately.

# COX-2 (72 kDa) in Figure 14C



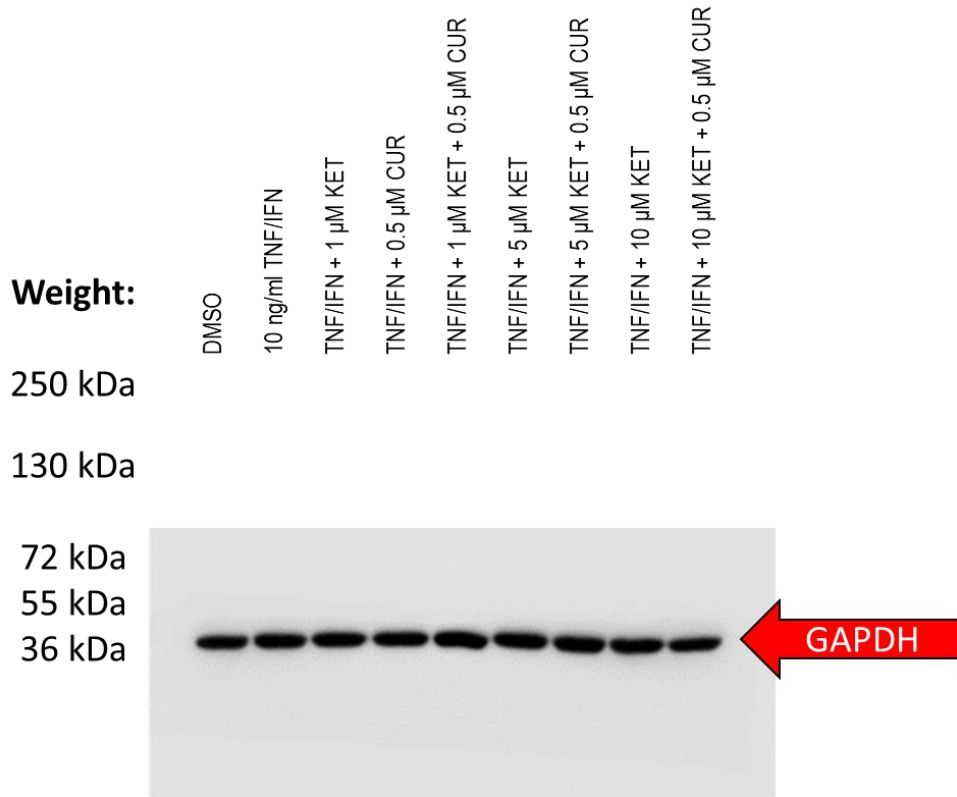
**Figure S34.** Original Western blots of HSEIC proteins showing COX-2 at molecular weight of 72 kDa. Red arrow indicates bands shown in Figure 14C. This blot membrane has been cut into pieces. Each membrane received different exposure times, and the images were taken separately.

# IL-6 (25 kDa) in Figure 14C



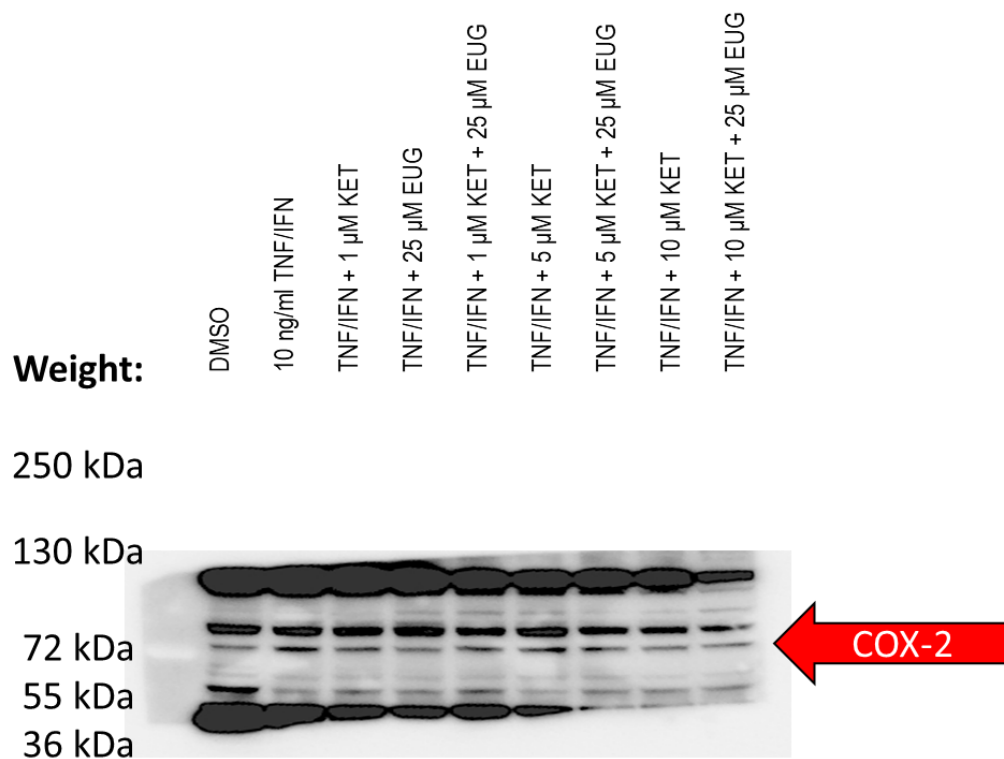
**Figure S35.** Original Western blots of HSEIC proteins showing IL-6 at molecular weight of 21 kDa. Red arrow indicates bands shown in Figure 14C. This blot membrane has been cut into pieces. Each membrane received different exposure times, and the images were taken separately.

# GAPDH (36 kDa) in Figure 14C



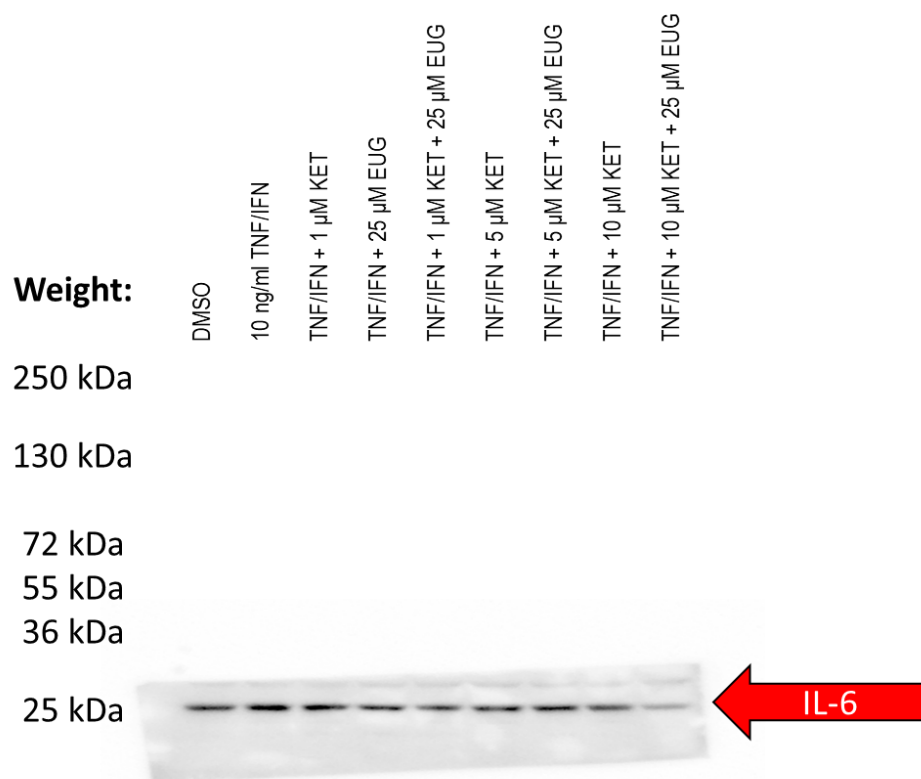
**Figure S36.** Original Western blots of HSEIC proteins showing GAPDH at molecular weight of 36 kDa. Red arrow indicates bands shown in Figure 14C. This blot membrane has been cut into pieces. Each membrane received different exposure times, and the images were taken separately.

# COX-2 (72 kDa) in Figure 15C



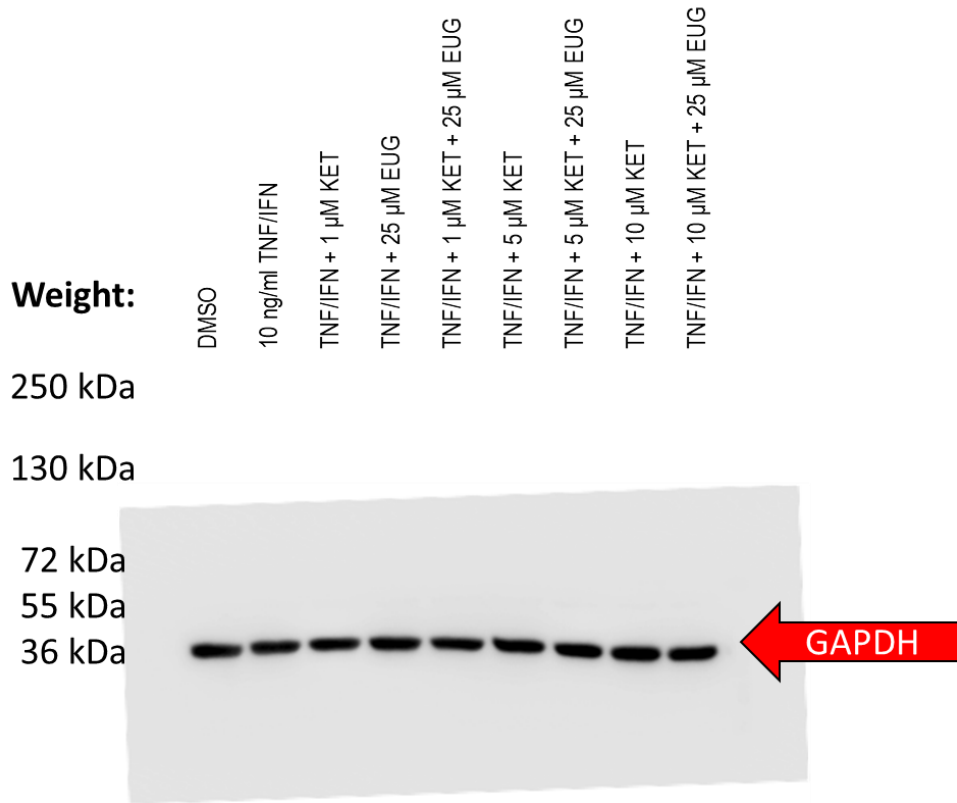
**Figure S37.** Original Western blots of HSEIC proteins showing COX-2 at molecular weight of 72 kDa. Red arrow indicates bands shown in Figure 15C. This blot membrane has been cut into pieces. Each membrane received different exposure times, and the images were taken separately.

# IL-6 (25 kDa) in Figure 15C



**Figure S38.** Original Western blots of HSEIC proteins showing IL-6 at molecular weight of 21 kDa. Red arrow indicates bands shown in Figure 15C. This blot membrane has been cut into pieces. Each membrane received different exposure times, and the images were taken separately.

# GAPDH (36 kDa) in Figure 15C



**Figure S39.** Original Western blots of HSEIC proteins showing GAPDH at molecular weight of 36 kDa. Red arrow indicates bands shown in Figure 15C. This blot membrane has been cut into pieces. Each membrane received different exposure times, and the images were taken separately.