

Supplementary Materials for

***In vivo* Evaluation of the Wound Healing Activity of
Extracts and Bioactive Constituents of the Marine
Isopod *Ceratothoa oestroides***

Evgenia Sofrona ^{1,2}, Leto-Aikaterini Tziveleka ¹, Maria Harizani ¹, Panagiota Koroli ², Ioannis Sfiniadakis ³, Vassilios Roussis ¹, Michail Rallis ^{2,*} and Efstathia Ioannou ^{1,*}

¹ Section of Pharmacognosy and Chemistry of Natural Products, Department of Pharmacy, School of Health Sciences, National and Kapodistrian University of Athens, Athens 15771, Greece; evgenia.sofrona@gmail.com (E.S.); ltziveleka@pharm.uoa.gr (L.A.T.); mariachariz@pharm.uoa.gr (M.H.); roussis@pharm.uoa.gr (V.R.)

² Section of Pharmaceutical Technology, Department of Pharmacy, School of Health Sciences, National and Kapodistrian University of Athens, Athens 15784, Greece; giotakor17@hotmail.com (P.K.)

³ Athens Naval Hospital, Pathologoanatomic Laboratory, Athens 11521, Greece; jsfiniadakis@yahoo.gr (I.S.)

* Correspondence: rallis@pharm.uoa.gr (M.R.); eioannou@pharm.uoa.gr (E.I.); Tel.: +30-210-7274699 (M.R.); +30-210-7274913 (E.I.).

Table of Contents

Figure S1. TEWL values for the various mice groups receiving different treatments (no treatment, control; 1% olive oil extract, COOE; 1% total organic extract, COTOE; 1% cHex extract, COA; 1% CH ₂ Cl ₂ extract, COB; 1% <i>n</i> -BuOH extract, COC; 1% H ₂ O extract, COD) on day 18 of the experiment. Values are presented as the mean±SD (n=3-4 mice per group). One-way ANOVA followed by Tukey's test was applied for comparison between the extract-treated mice groups and the negative control (* <i>p</i> <0.05 vs control).	S3
Figure S2. (A) TEWL values for male and female mice groups receiving different treatments (ointment base, BASE; Madecassol; 1% olive oil extract, COOE; 1% CH ₂ Cl ₂ extract, COB; 1% H ₂ O extract, COD) on day 1 and day 25 of the experiment. (B) Hydration values for male and female mice groups receiving different treatments on day 1 and day 25 of the experiment. (C) Skin elasticity values for male and female mice groups receiving different treatments on day 1 and day 25 of the experiment. (D) Skin thickness values (mm) for male and female mice groups receiving different treatments on day 1 and day 25 of the experiment. Values are presented as the mean±SD (n=7 animals per group). One-way ANOVA followed by Tukey's test was applied for comparison between the treated mice and the control (* <i>p</i> <0.05 vs control).	S3
Figure S3. Representative histopathological images of male and female mice skin after treatment with the ointment base (A and B, respectively), Madecassol (C and D, respectively), 1% COB extract (E and F, respectively) or 1% COD extract (G and H, respectively) (magnification 100× (C-G), 200× (A, B) and 400× (H)). Samples were stained with hematoxylin and eosin.	S4
Figure S4. ¹ H NMR spectrum of fraction COB-A in CDCl ₃ .	S5
Figure S5. ¹ H NMR spectrum of fraction COB-B in CDCl ₃ .	S5
Figure S6. ¹ H NMR spectrum of fraction COB-C in CDCl ₃ .	S6
Figure S7. (A) TEWL values for the various mice groups receiving different treatments (no treatment, control; ointment base, BASE; 1%, 2%, and 4% CH ₂ Cl ₂ extract, COB1%; COB2% and COB4%, respectively; 0.3% COB-A fraction, COB-A; 0.3% COB-B fraction; COB-B; 0.3% COB-C fraction, COB-C) on day 1 and day 24 of the experiment. (B) Hydration values for the various mice groups on day 1 and day 24 of the experiment. Values are presented as the mean±SD (n=4 mice per group). One-way ANOVA followed by Tukey's test was applied for comparison between the treated mice and the control (* <i>p</i> <0.05 vs control).	S6

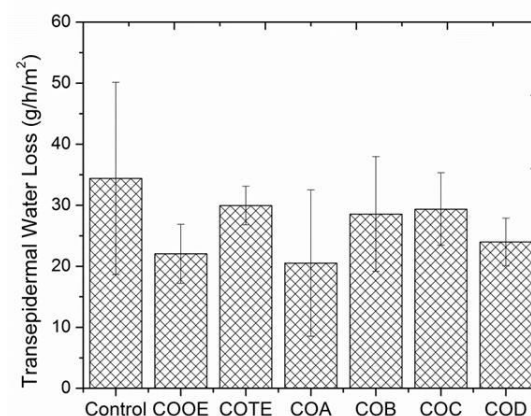


Figure S1. TEWL values for the various mice groups receiving different treatments (no treatment, control; 1% olive oil extract, COOE; 1% total organic extract, COTE; 1% cHex extract, COA; 1% CH₂Cl₂ extract, COB; 1% *n*-BuOH extract, COC; 1% H₂O extract, COD) on day 18 of the experiment. Values are presented as the mean±SD (n=3-4 mice per group). One-way ANOVA followed by Tukey's test was applied for comparison between the extract-treated mice groups and the negative control (**p*<0.05 vs control).

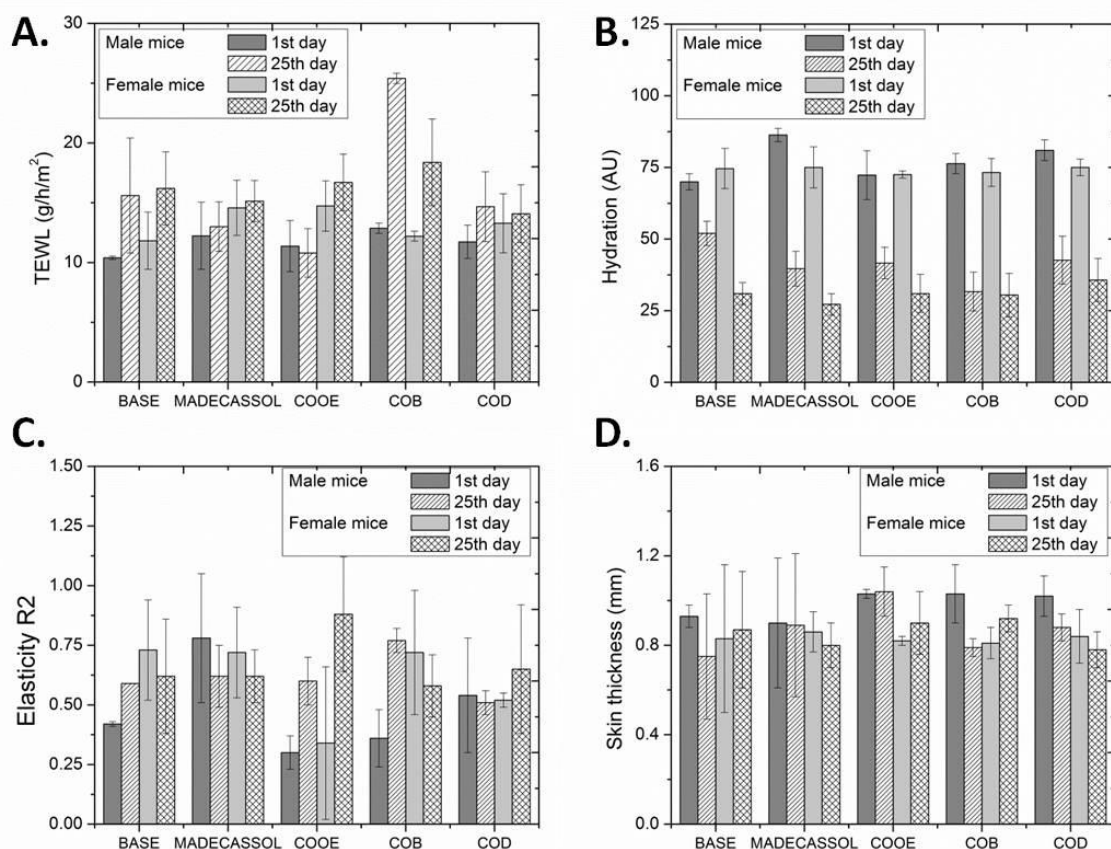


Figure S2. (A) TEWL values for male and female mice groups receiving different treatments (ointment base, BASE; Madecassol; 1% olive oil extract, COOE; 1% CH₂Cl₂ extract, COB; 1% H₂O extract, COD) on day 1 and day 25 of the experiment. (B) Hydration values for male and female mice groups receiving different treatments on day 1 and day 25 of the experiment. (C) Skin elasticity values for male and female mice groups receiving different treatments on day 1 and day 25 of the experiment. (D) Skin thickness values (mm) for male and female mice groups receiving different treatments on day 1 and day 25 of the experiment. Values are presented as the mean±SD (n=7 animals per group). One-way ANOVA followed by Tukey's test was applied for comparison between the treated mice and the control (**p*<0.05 vs control).

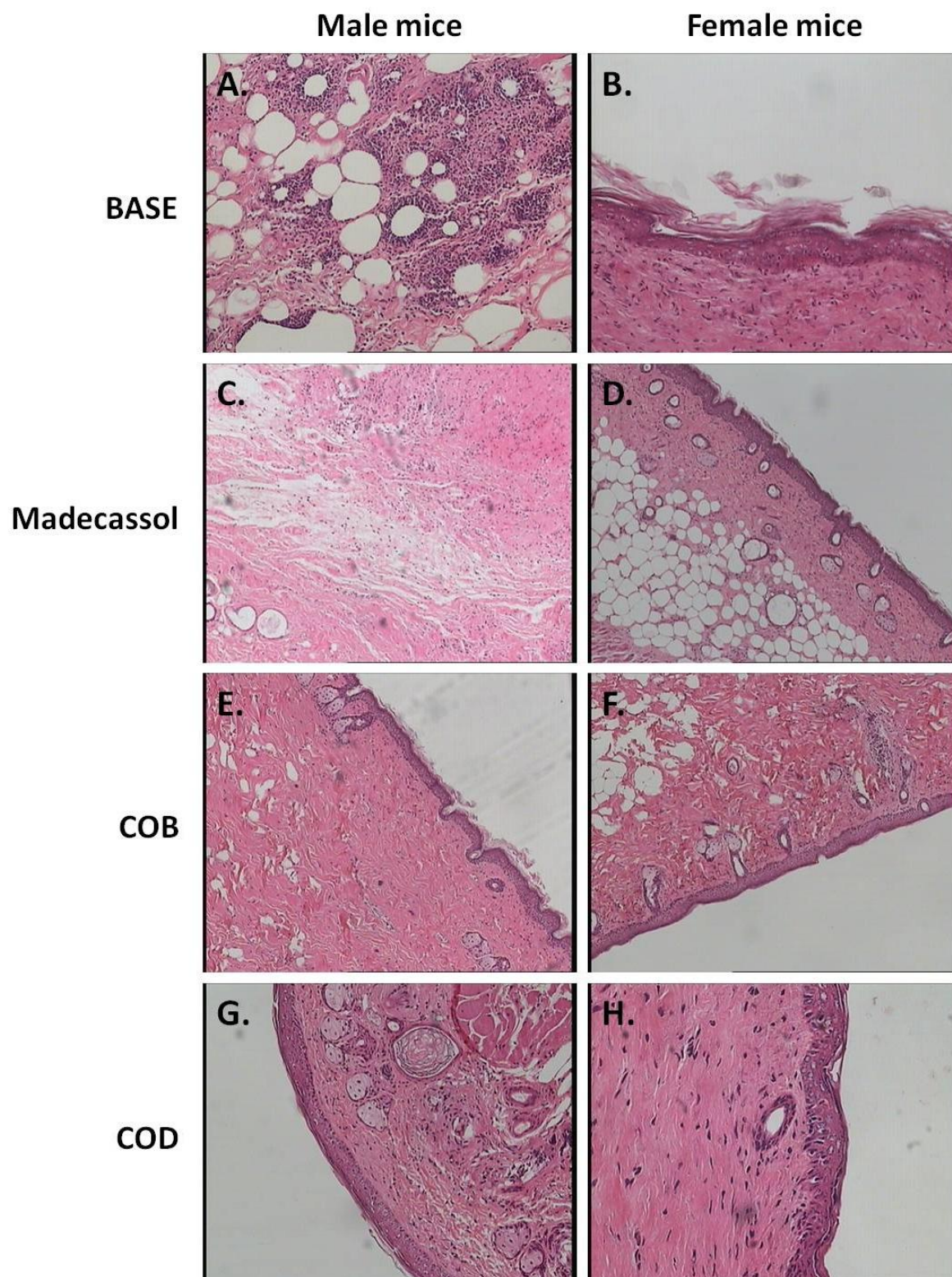


Figure S3. Representative histopathological images of male and female mice skin after treatment with the ointment base (A and B, respectively), Madecassol (C and D, respectively), 1% COB extract (E and F, respectively) or 1% COD extract (G and H, respectively) (magnification 100× (C-G), 200× (A, B) and 400× (H)). Samples were stained with hematoxylin and eosin.

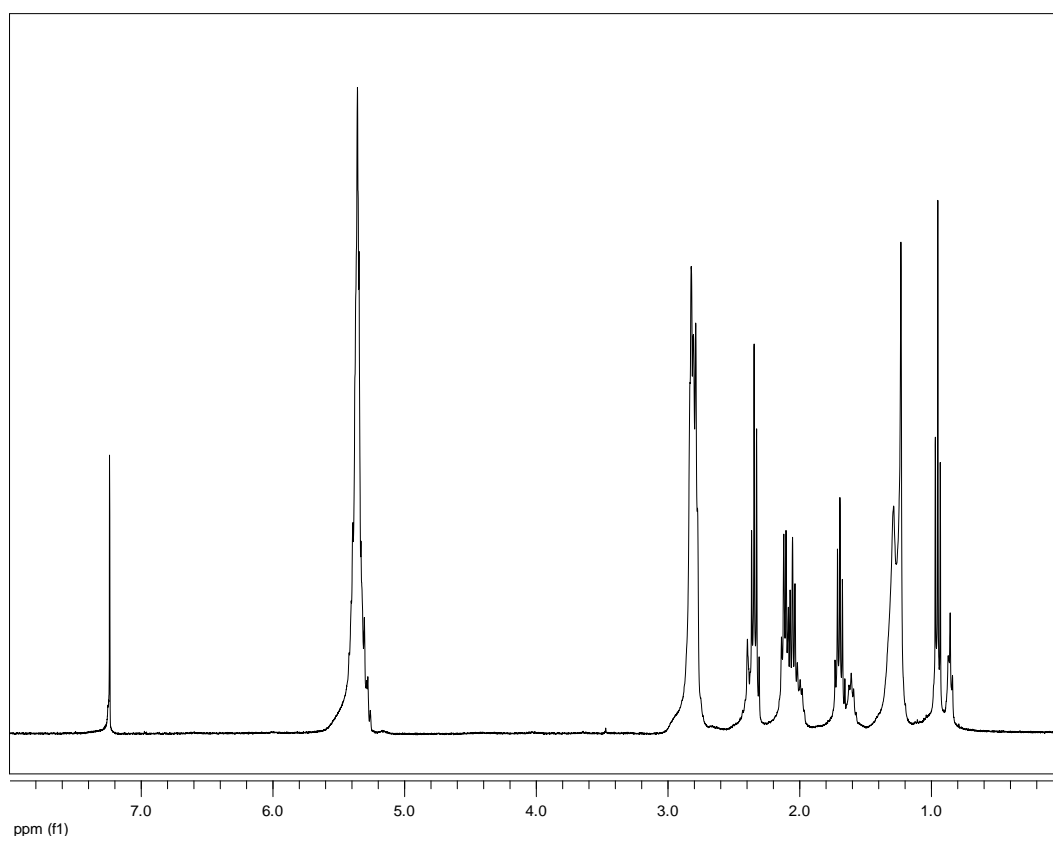


Figure S4. ^1H NMR spectrum of fraction COB-A in CDCl_3 .

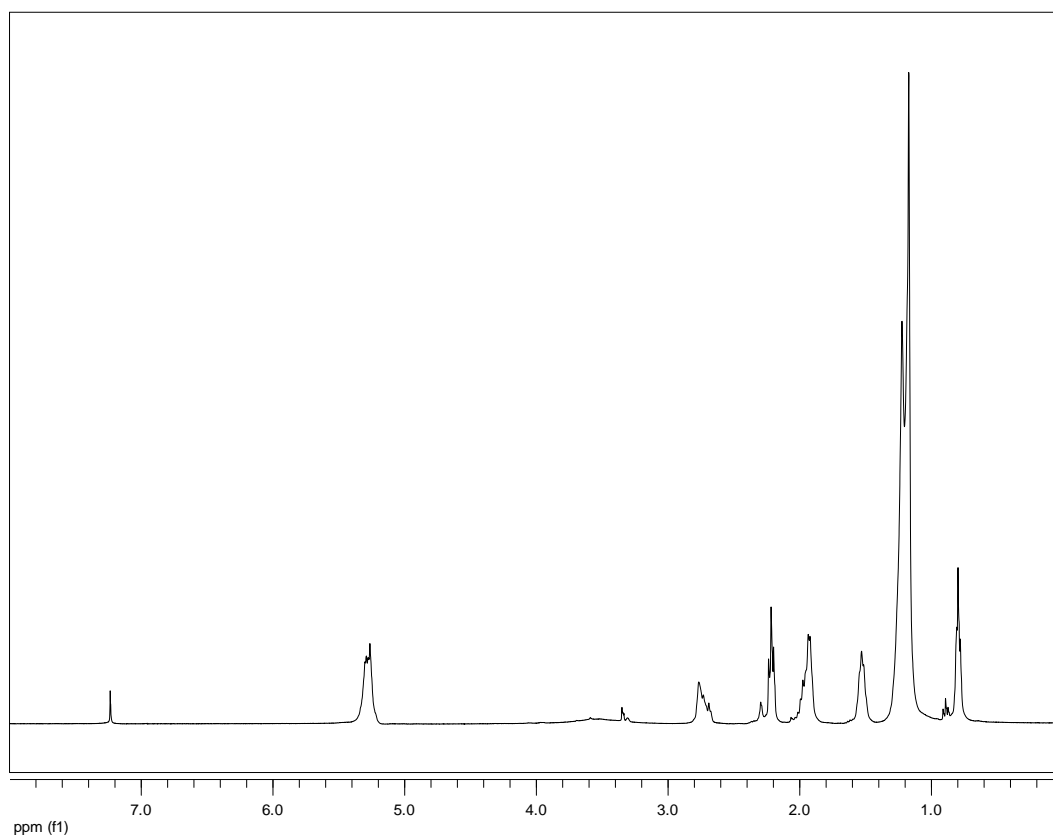


Figure S5. ^1H NMR spectrum of fraction COB-B in CDCl_3 .

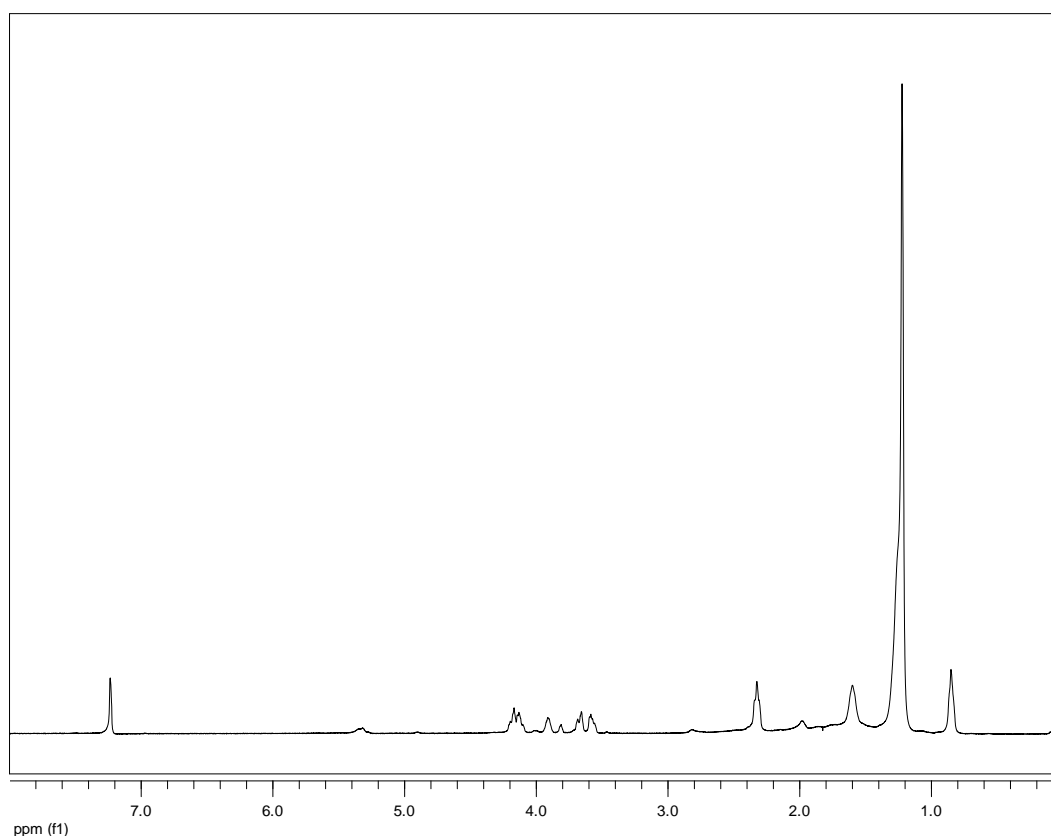


Figure S6. ^1H NMR spectrum of fraction COB-C in CDCl_3 .

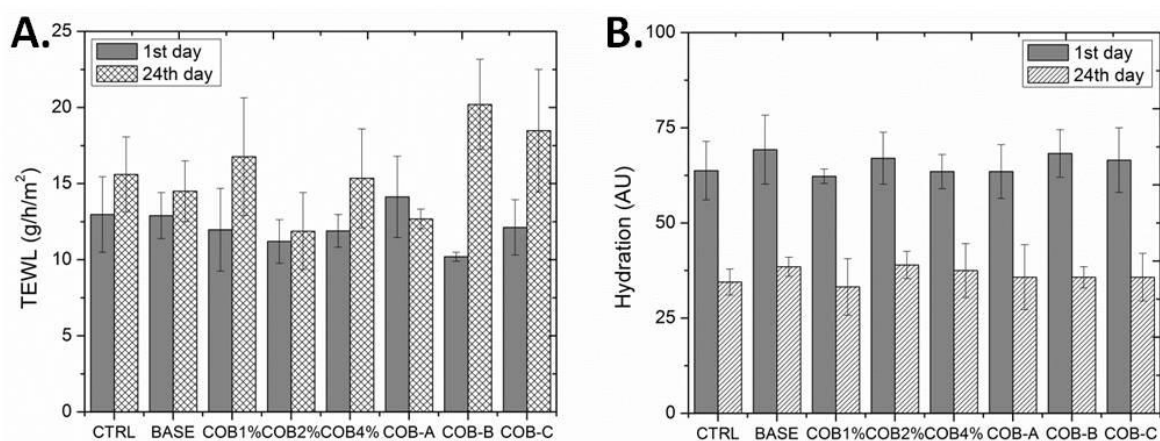


Figure S7. (A) TEWL values for the various mice groups receiving different treatments (no treatment, control; ointment base, BASE; 1%, 2%, and 4% CH_2Cl_2 extract, COB1%; COB2% and COB4%, respectively; 0.3% COB-A fraction, COB-A; 0.3% COB-B fraction; COB-B; 0.3% COB-C fraction, COB-C) on day 1 and day 24 of the experiment. (B) Hydration values for the various mice groups on day 1 and day 24 of the experiment. Values are presented as the mean \pm SD ($n=4$ mice per group). One-way ANOVA followed by Tukey's test was applied for comparison between the treated mice and the control ($*p<0.05$ vs control).