
Design, synthesis, antifungal activity and molecular docking of streptochlorin derivatives containing nitrile group

Jing-Rui Liu¹, Ya Gao¹, Bing Jin¹, Dale Guo², Fang Deng², Qiang Bian³, Haifeng Zhang⁴, Xinya Han⁵, Abdallah S. Ali⁶, Ming-Zhi Zhang^{1*}, Wei-Hua Zhang¹ and Yu-Cheng Gu⁷

¹*Jiangsu Key Laboratory of Pesticide Science, College of Sciences, Nanjing Agricultural University, Nanjing 210095, China*

²*State Key Laboratory Breeding Base of Systematic Research Development and Utilization of Chinese Medicine Resources, School of Pharmacy, Chengdu University of Traditional Chinese Medicine, Chengdu, 611137, China*

³*National Pesticide Engineering Research Center (Tianjin), College of Chemistry, Nankai University, Tianjin 300071, China*

⁴*Department of Plant Pathology, College of Plant Protection, Nanjing Agricultural University, Nanjing 210095, China*

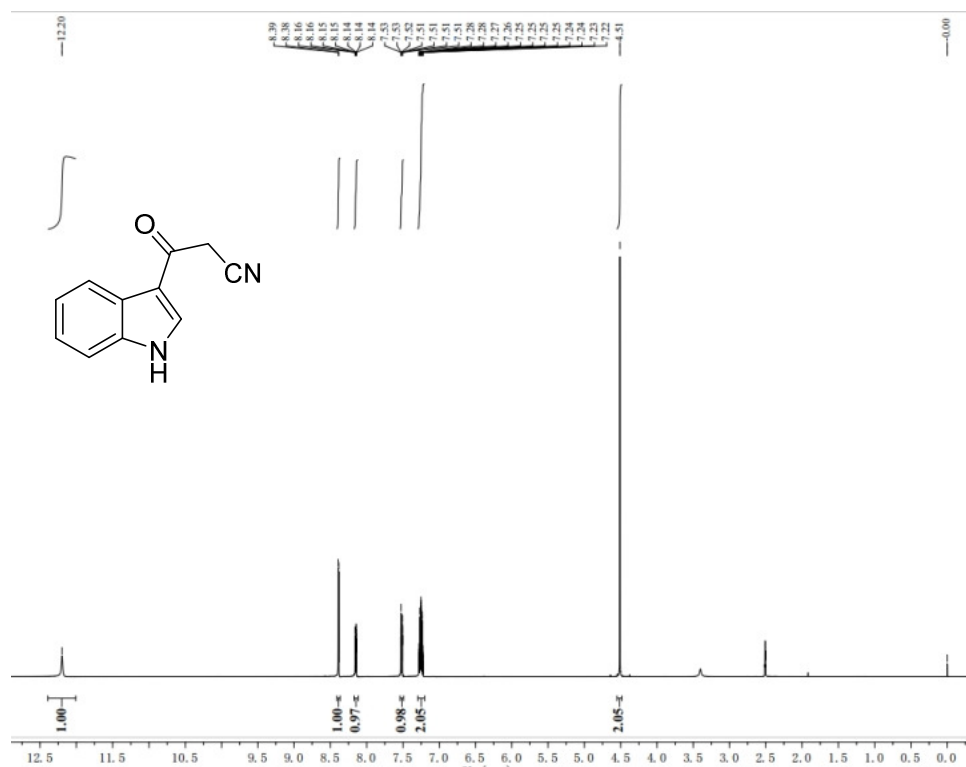
⁵*School of Chemistry & Chemical Engineering, Anhui University of Technology, Ma'anshan 243002, China*

⁶*Department of Microbiology, Faculty of Agriculture, Cairo University, Giza 12613, Egypt*

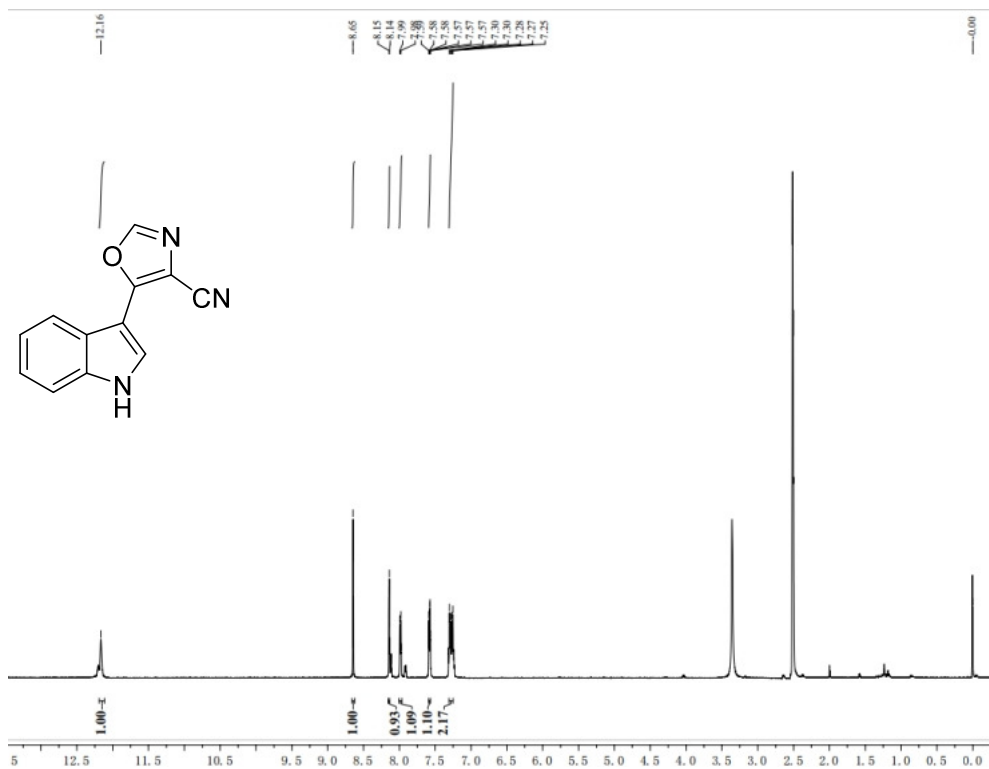
⁷*Syngenta Jealott's Hill International Research Centre, Bracknell RG42 6EY, Berkshire, UK*

1. ¹H NMR

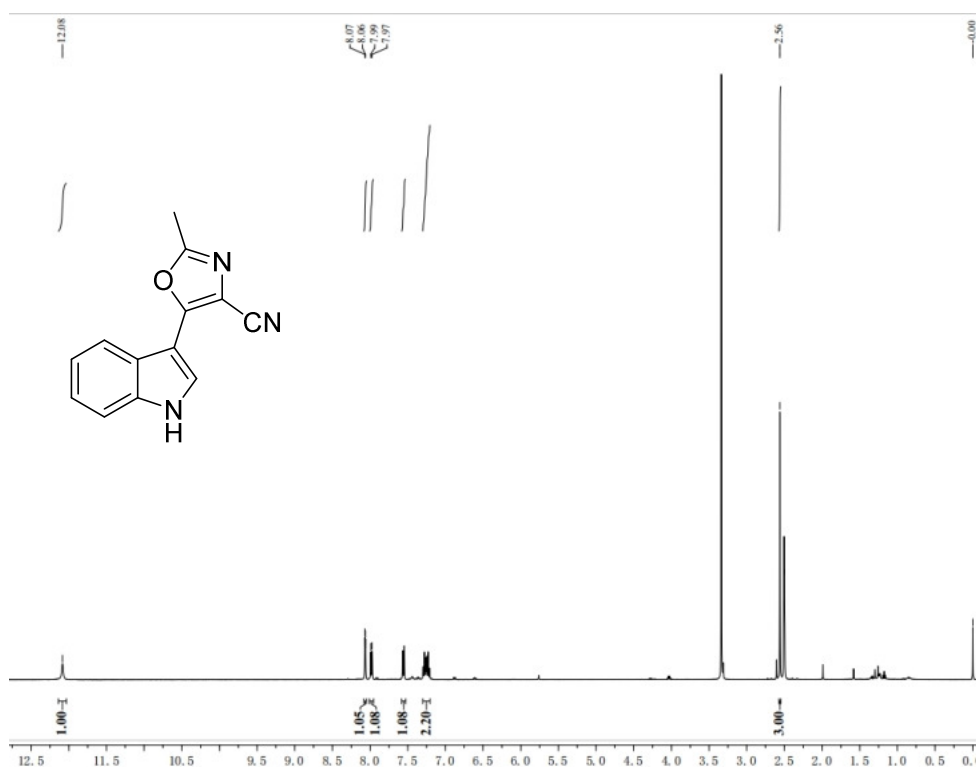
Compound 2



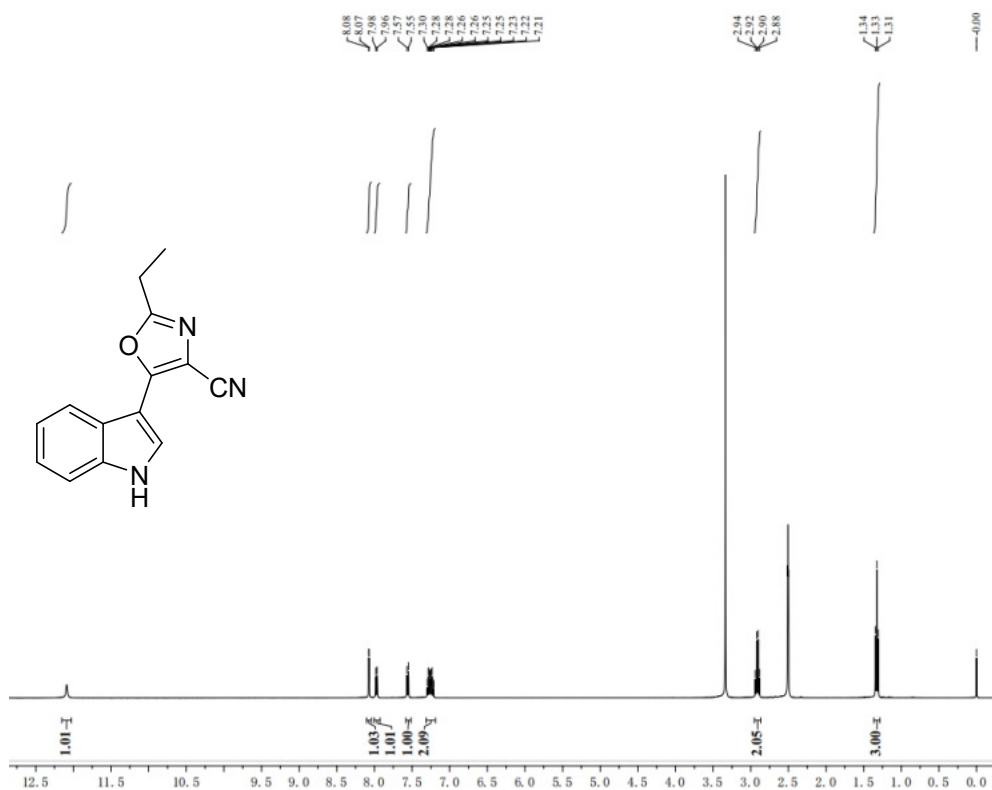
Compound 3a



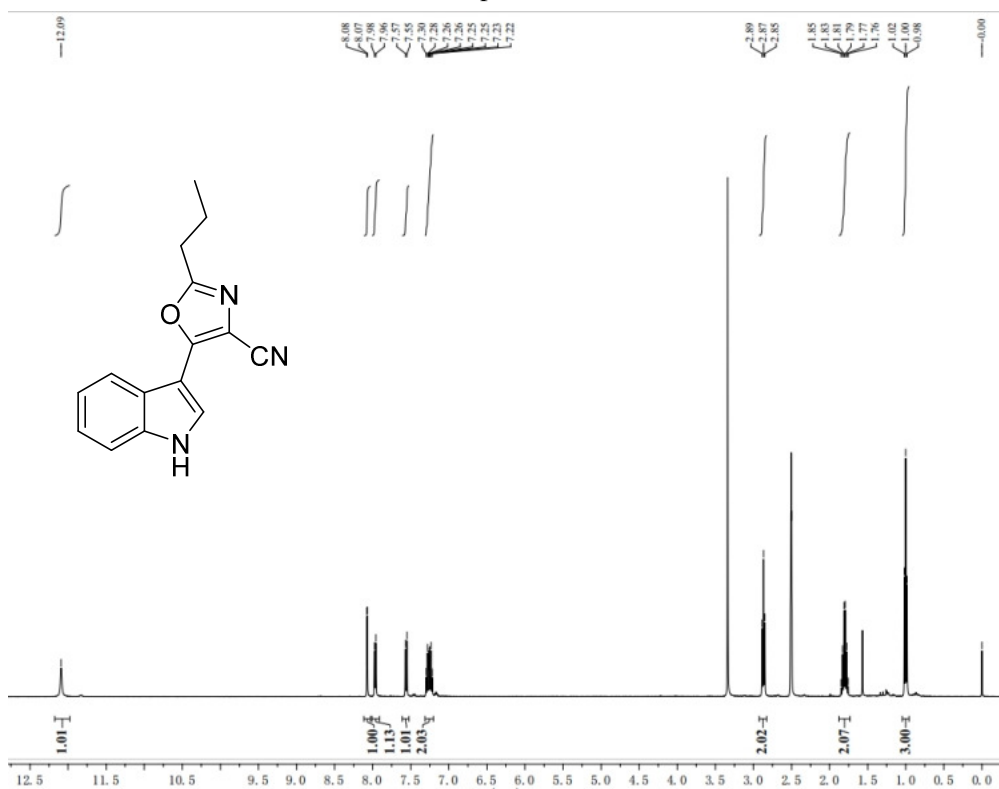
Compound 3b



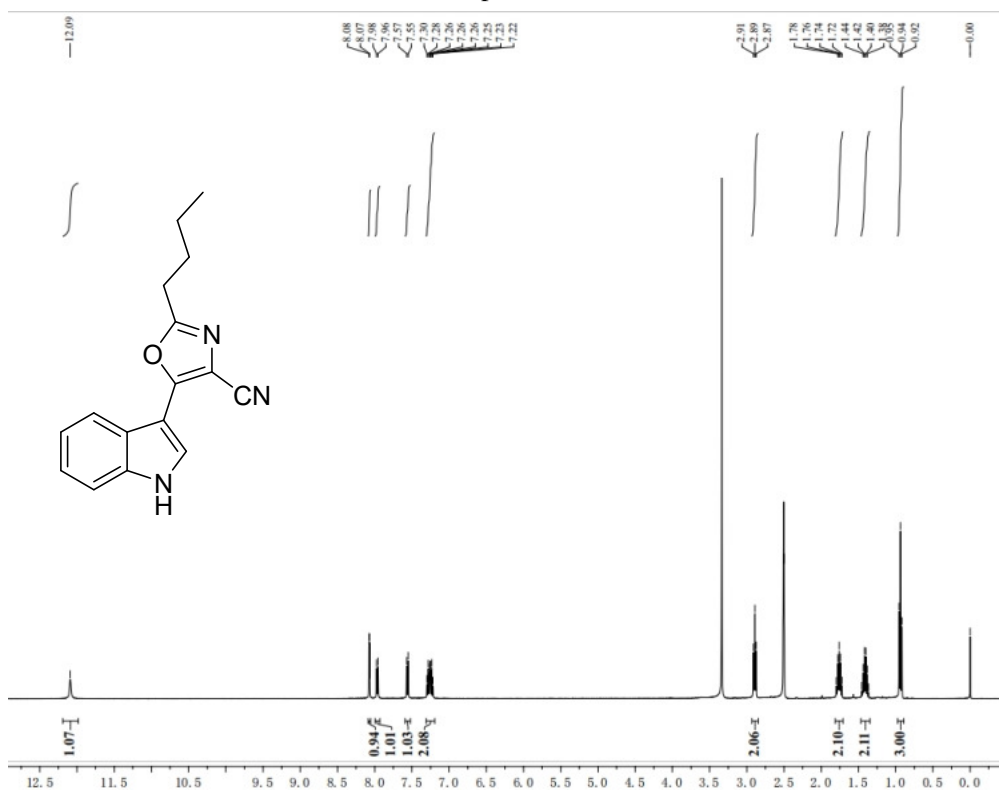
Compound 3c



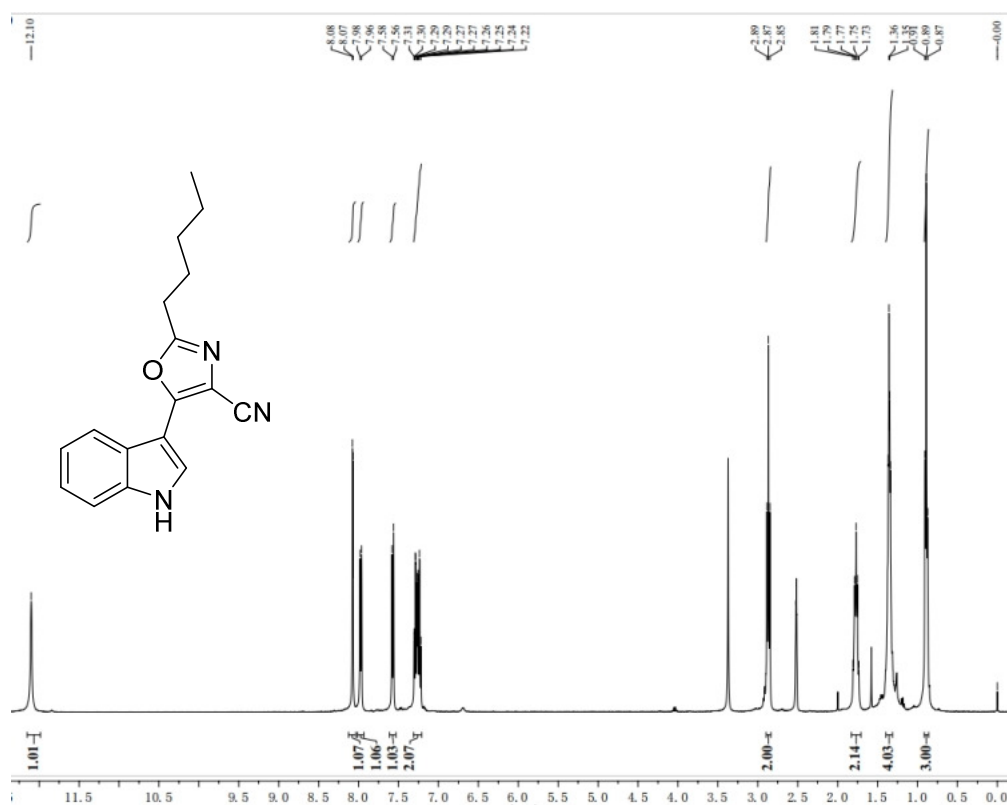
Compound 3d



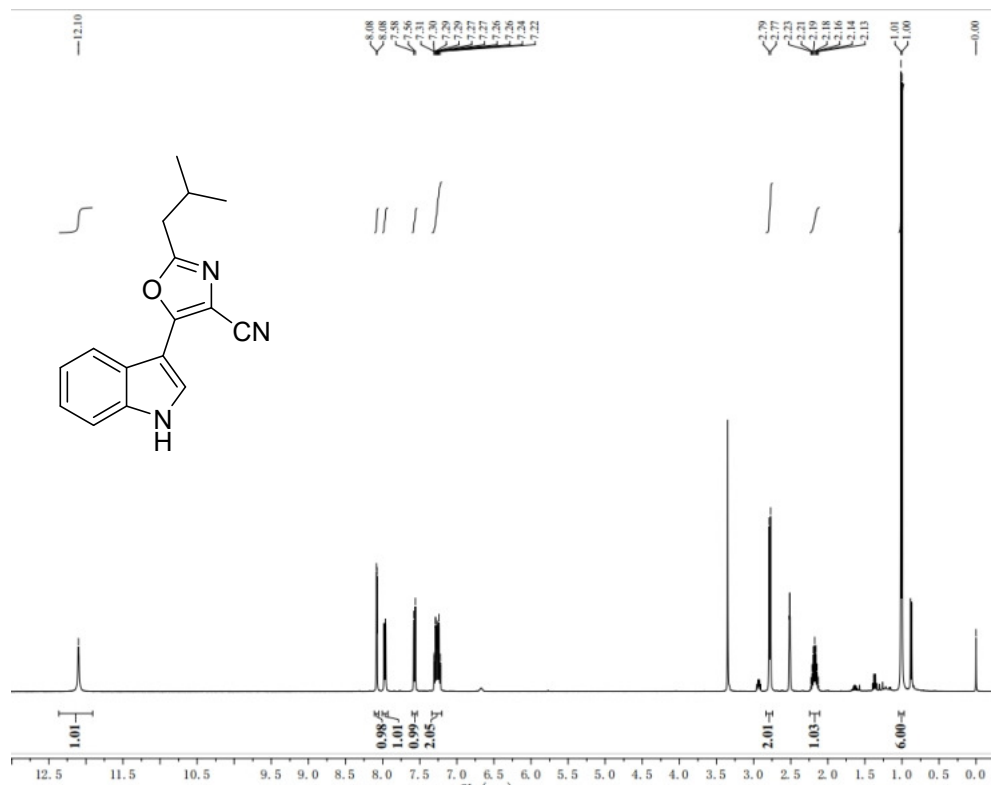
Compound 3e



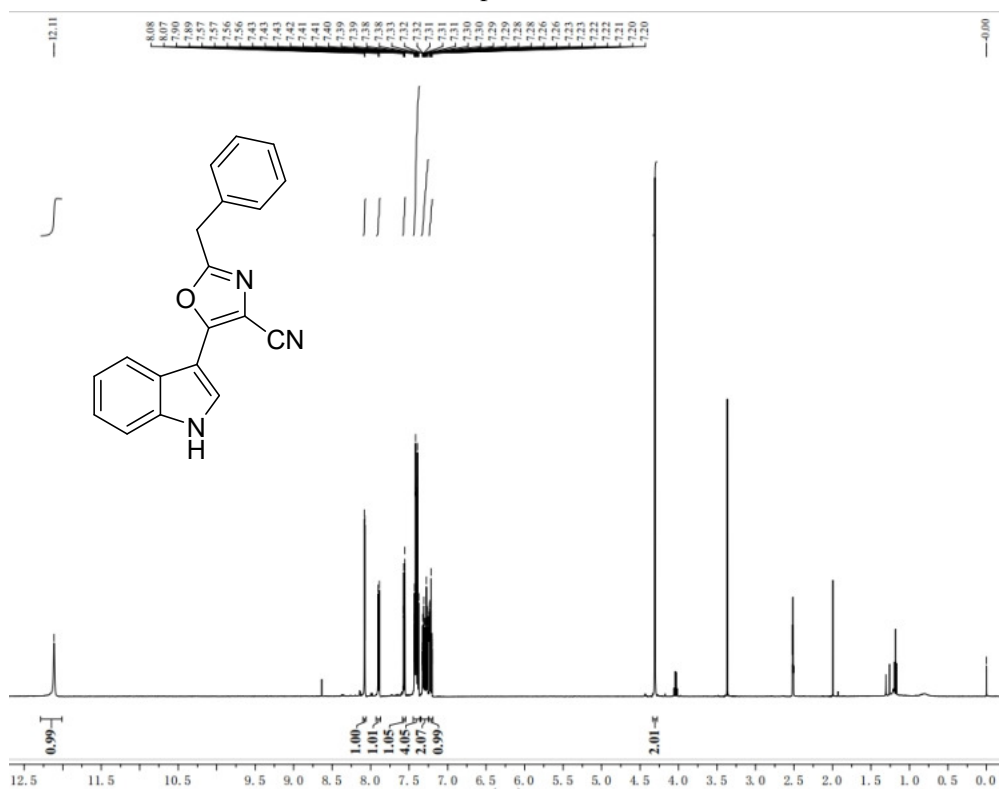
Compound 3f



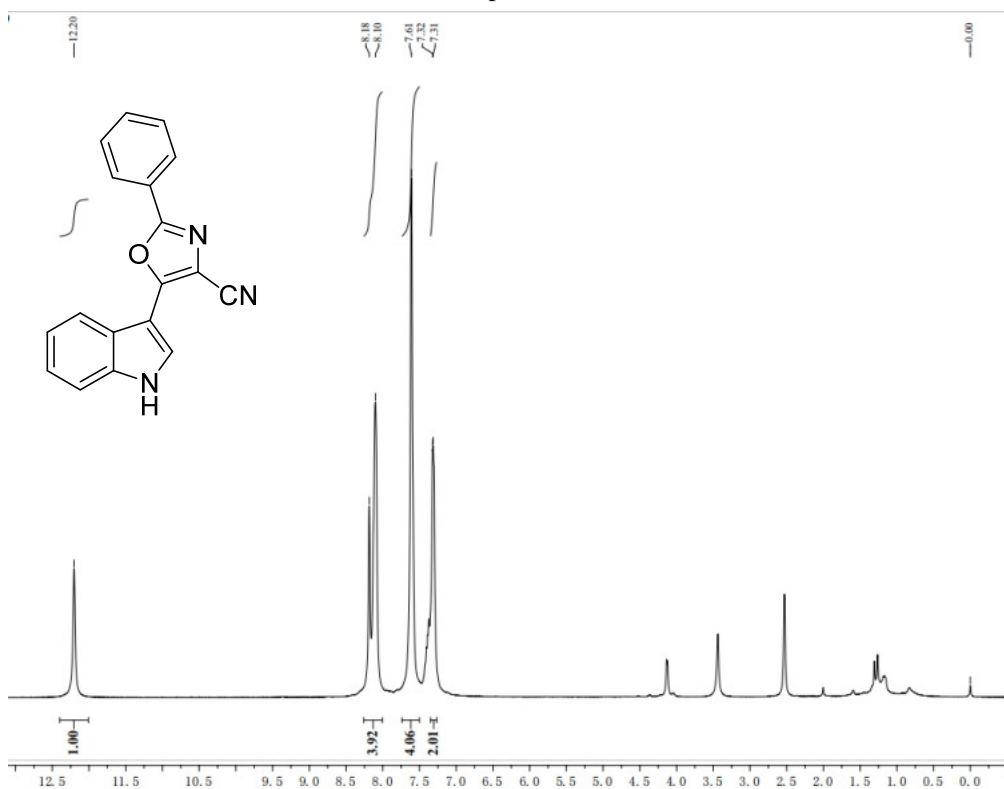
Compound 3g



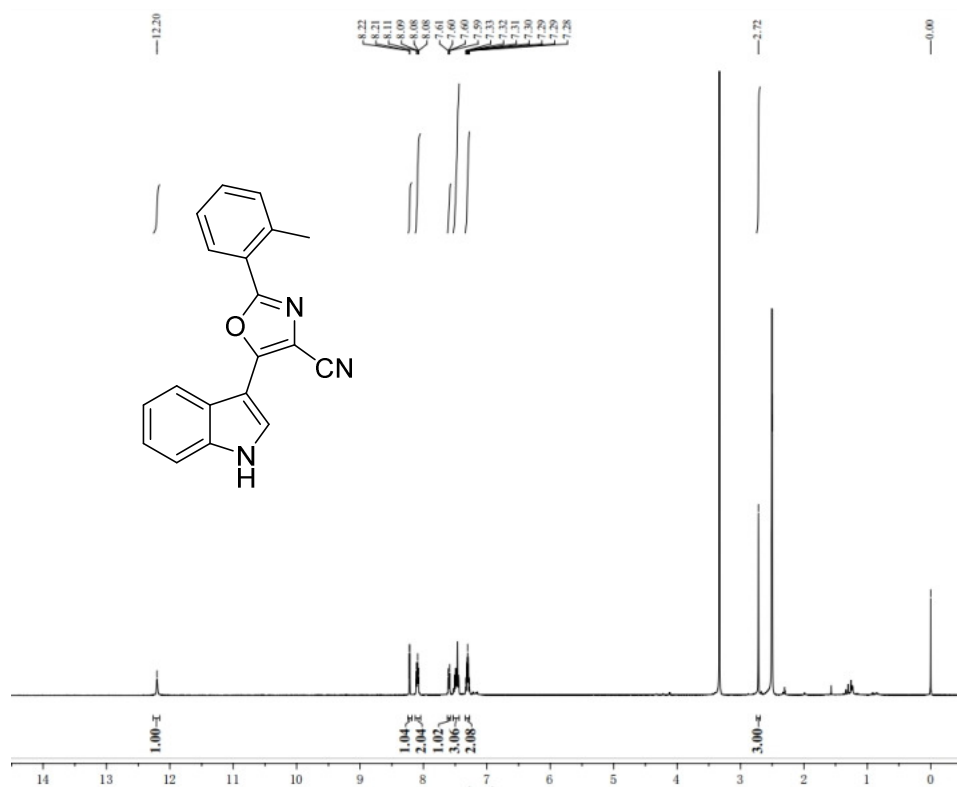
Compound 3h



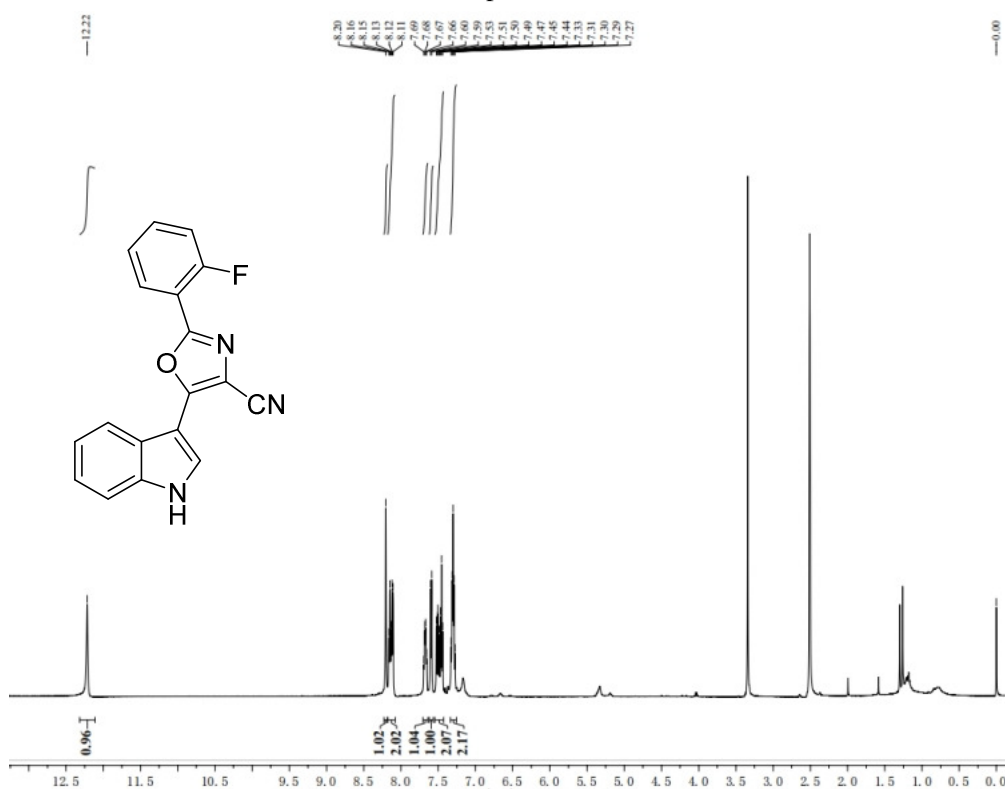
Compound 3i



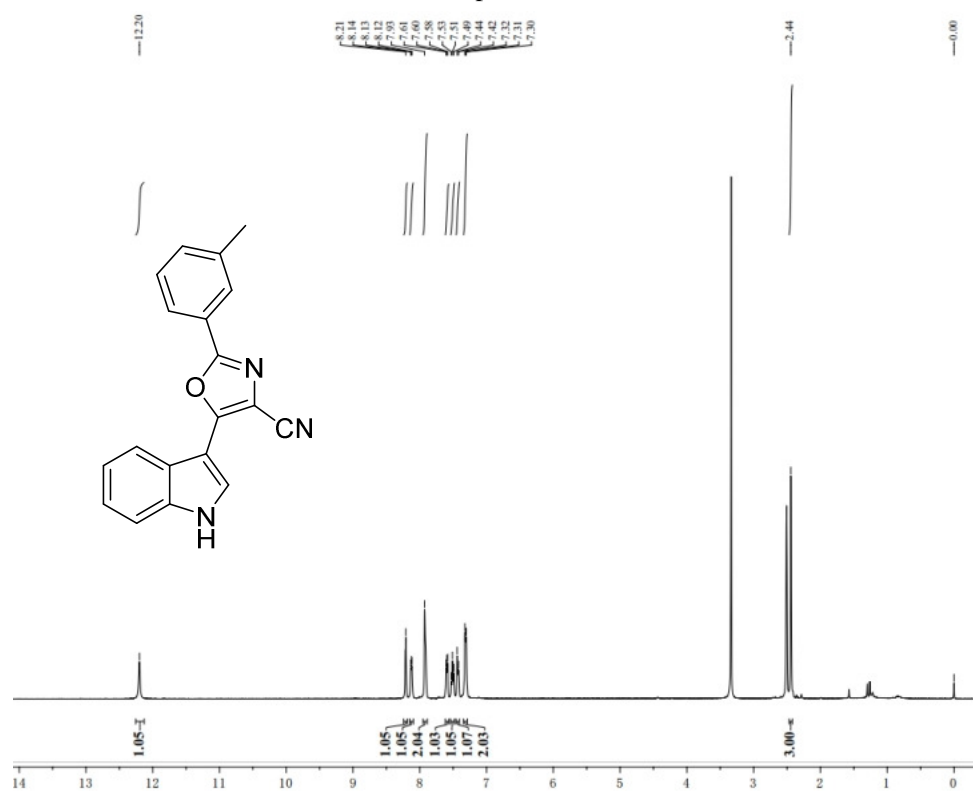
Compound 3j



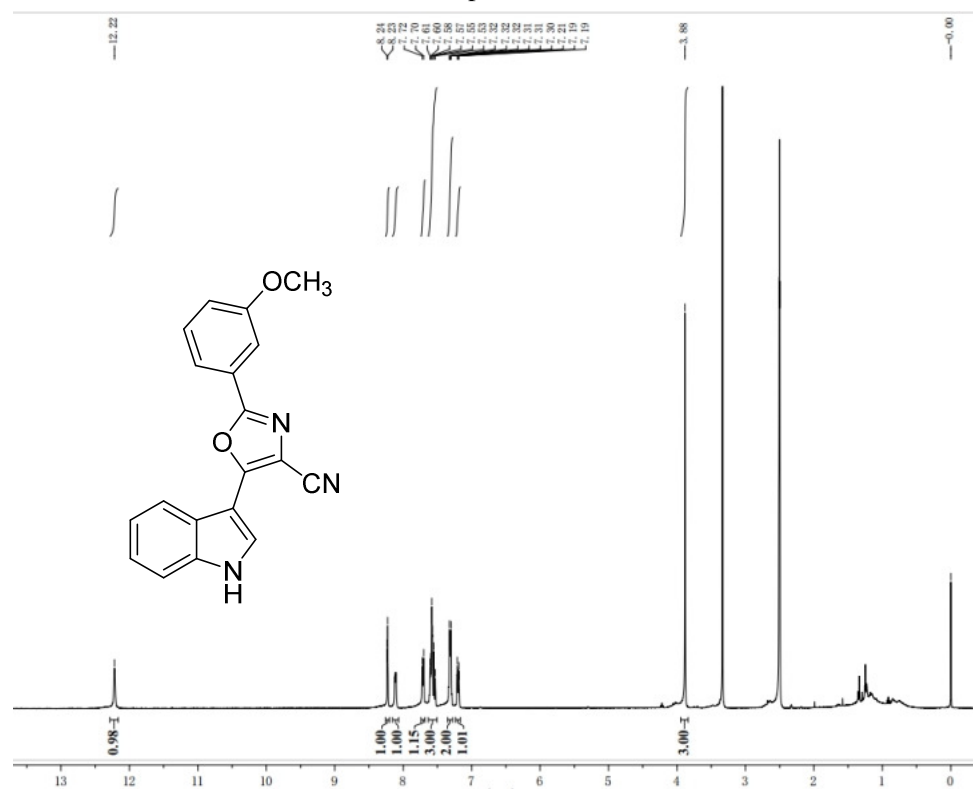
Compound 3k



Compound 3l



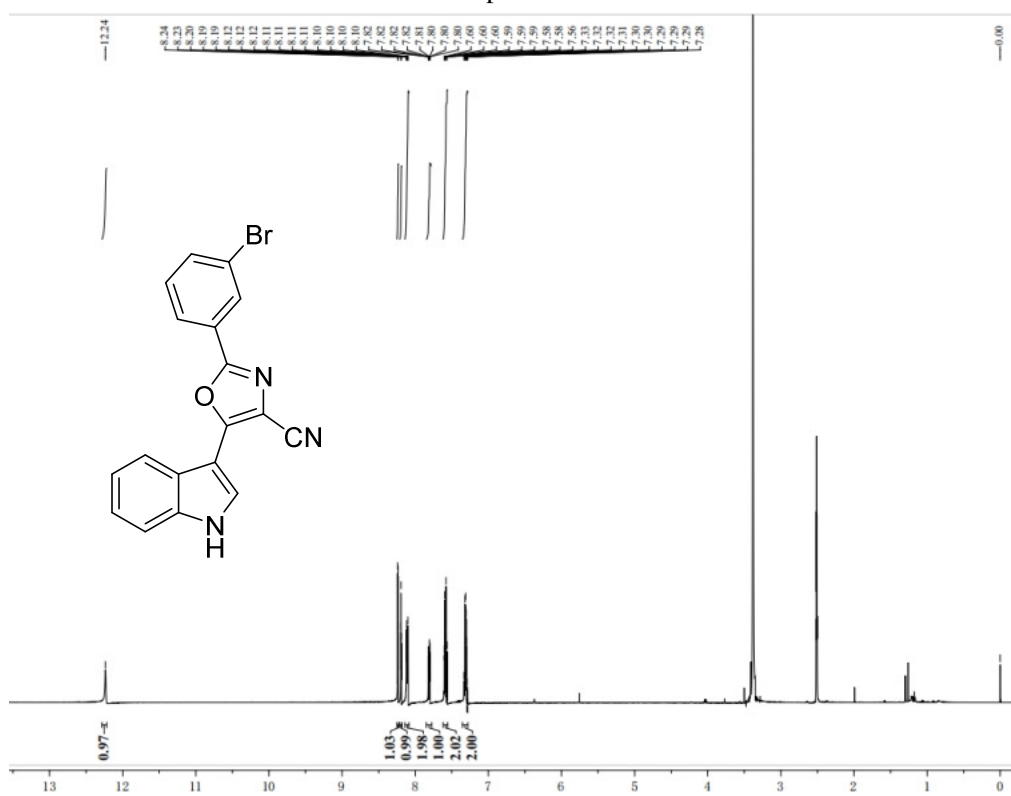
Compound 3m



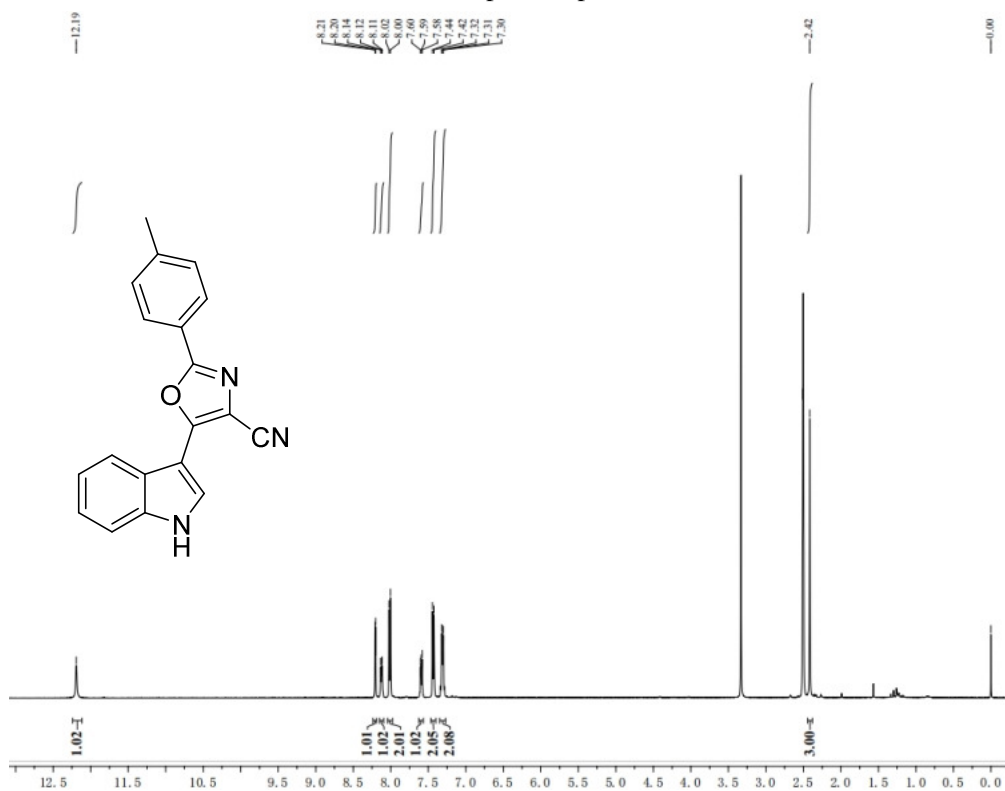
Compound 3n



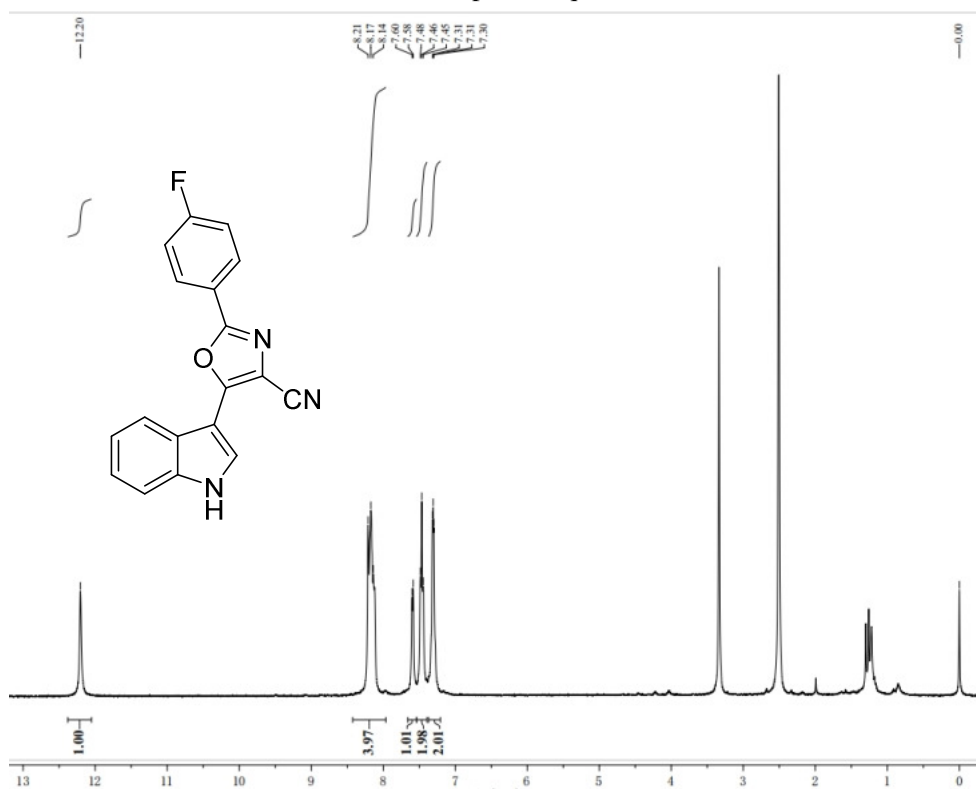
Compound 3o



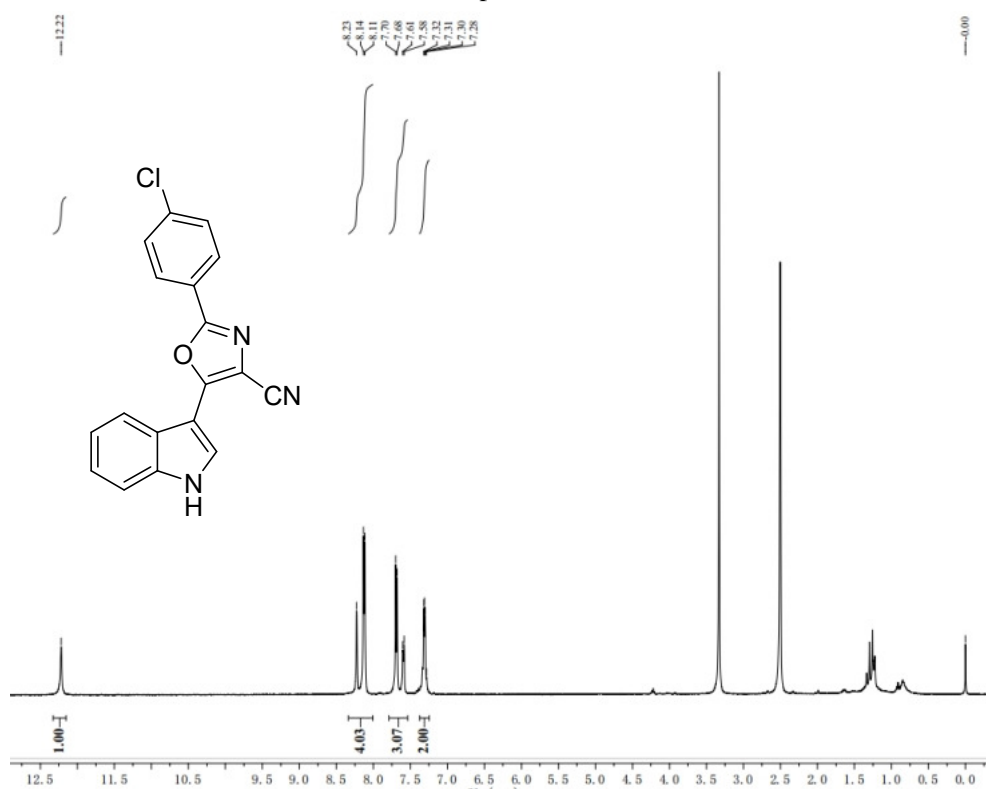
Compound 3p



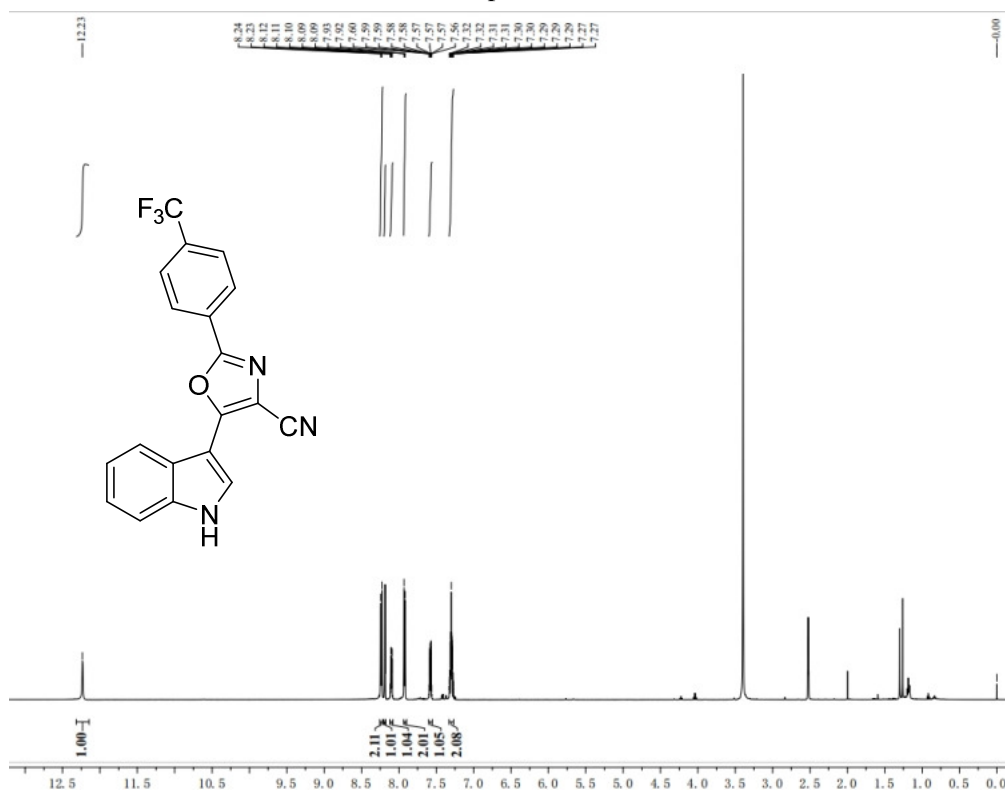
Compound 3q



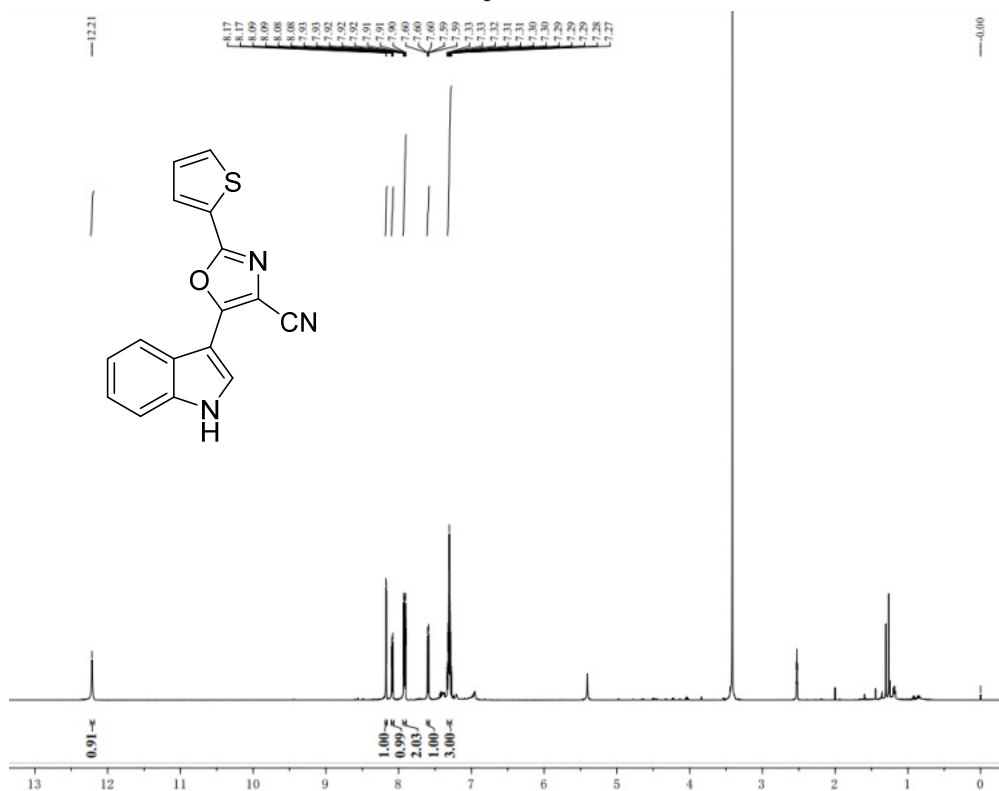
Compound 3r



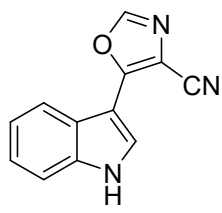
Compound 3s



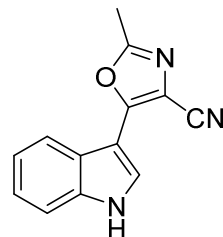
Compound 3t



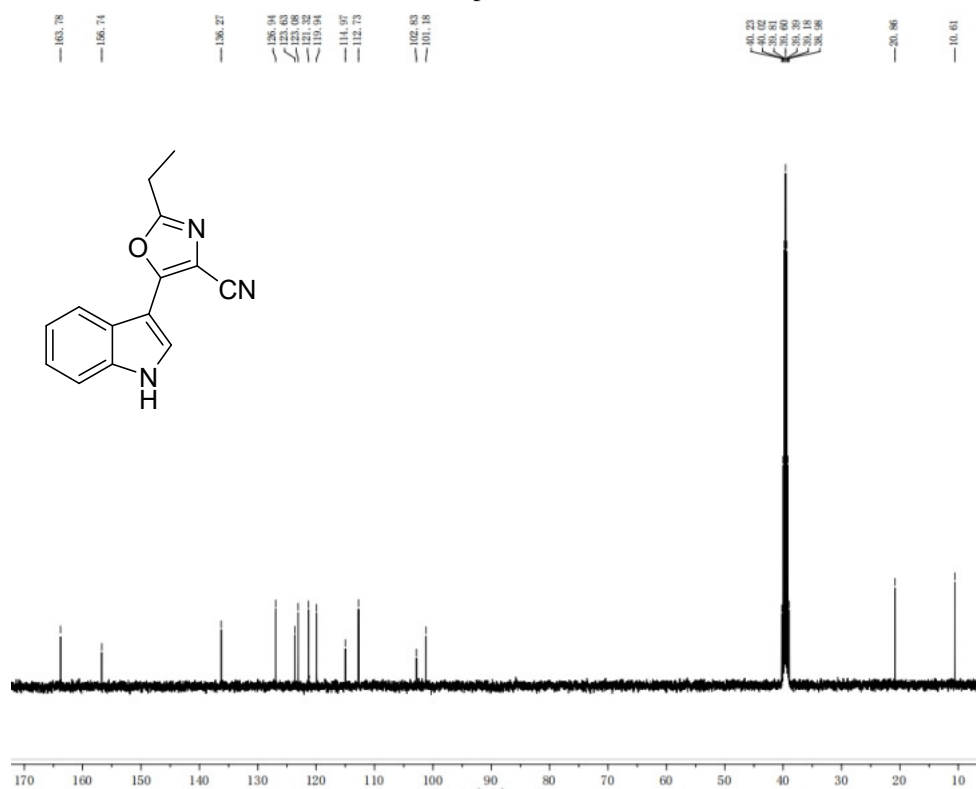
Compound 3a



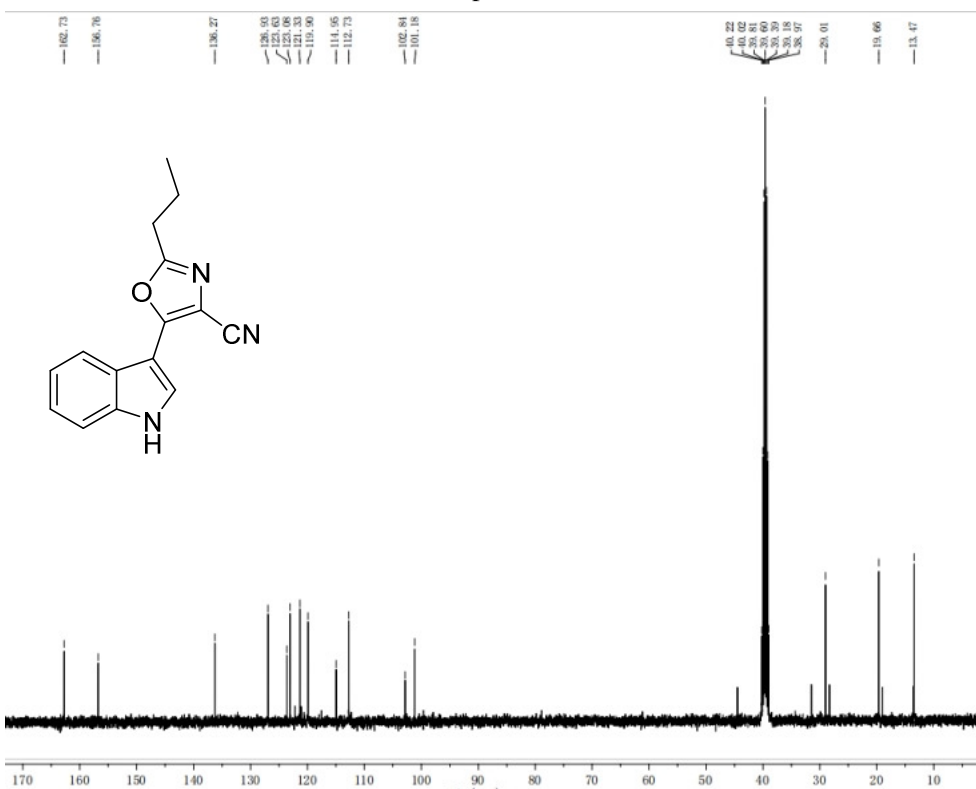
Compound 3b



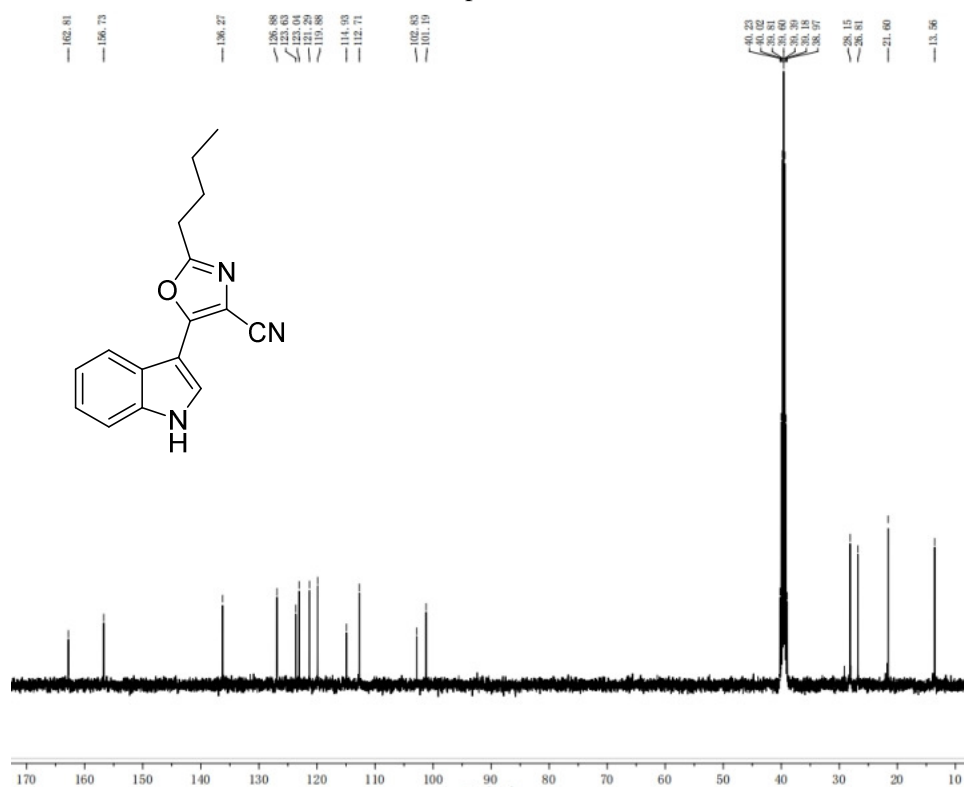
Compound 3c



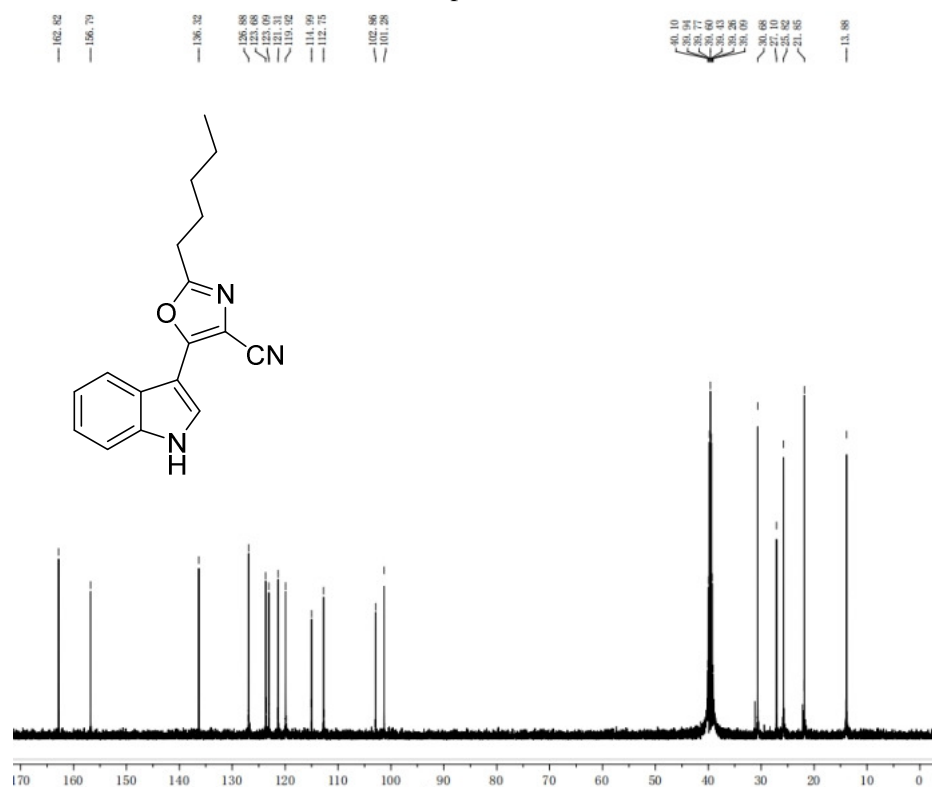
Compound 3d



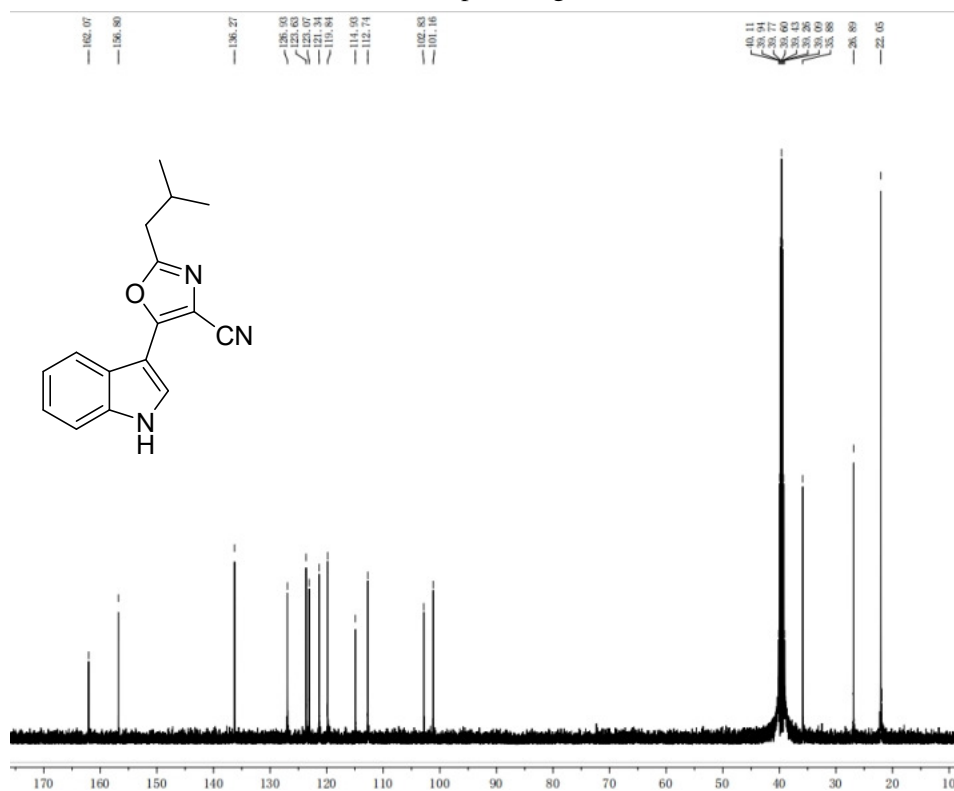
Compound 3e



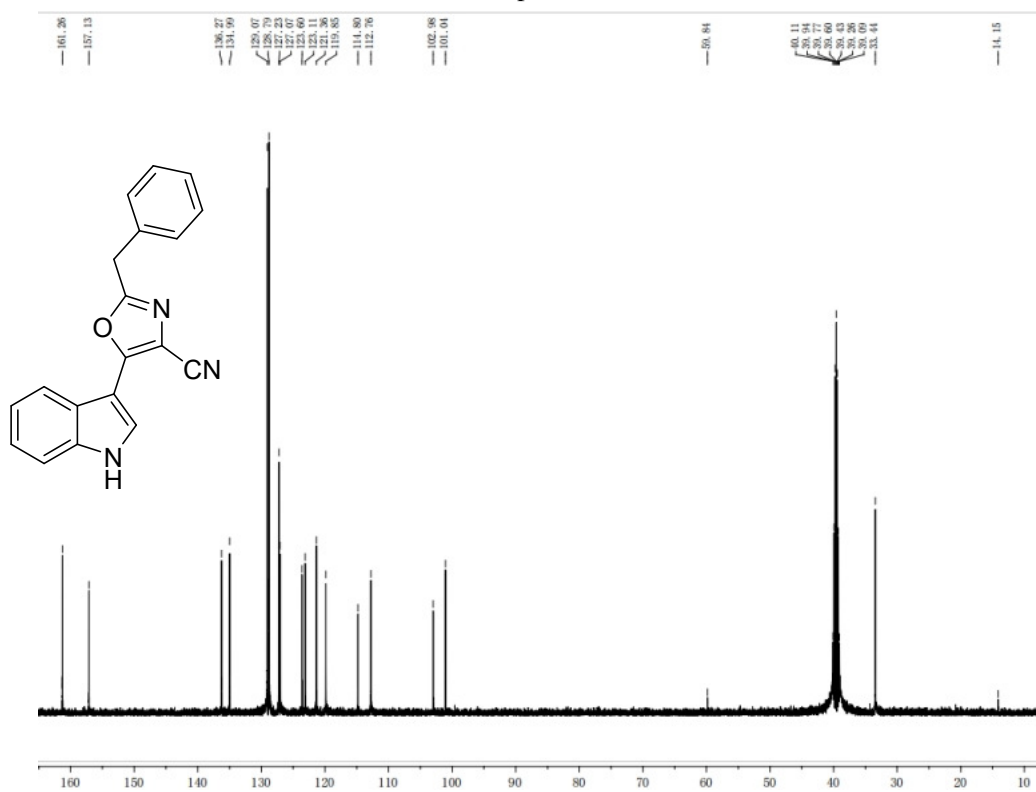
Compound 3f



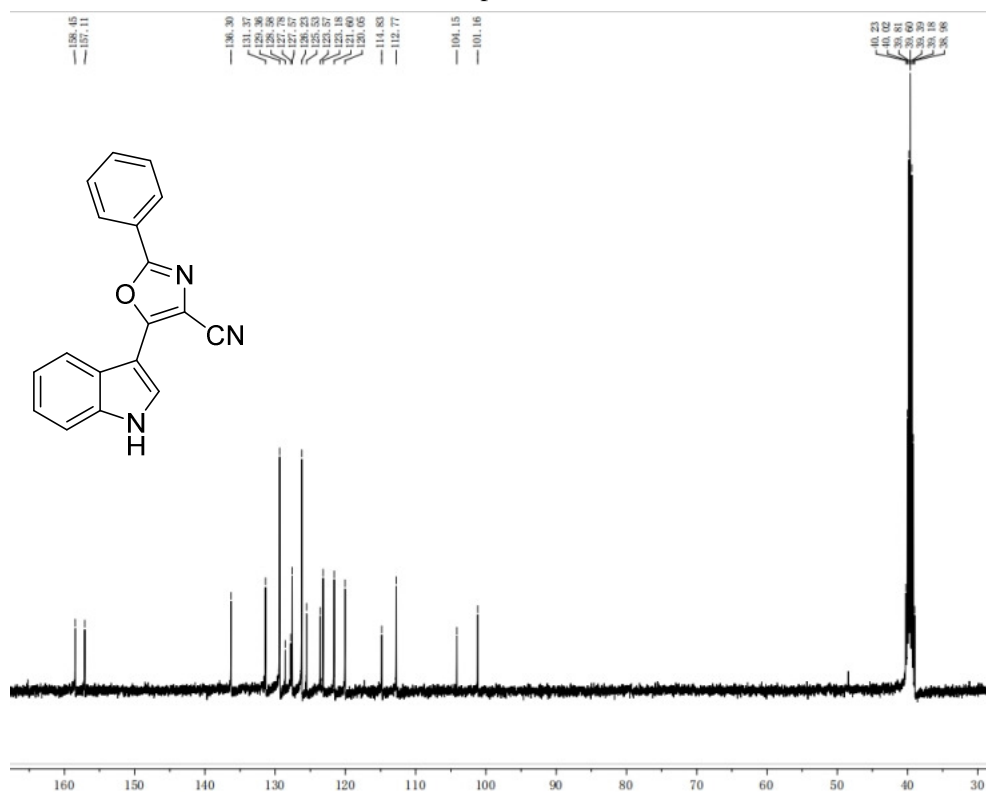
Compound 3g



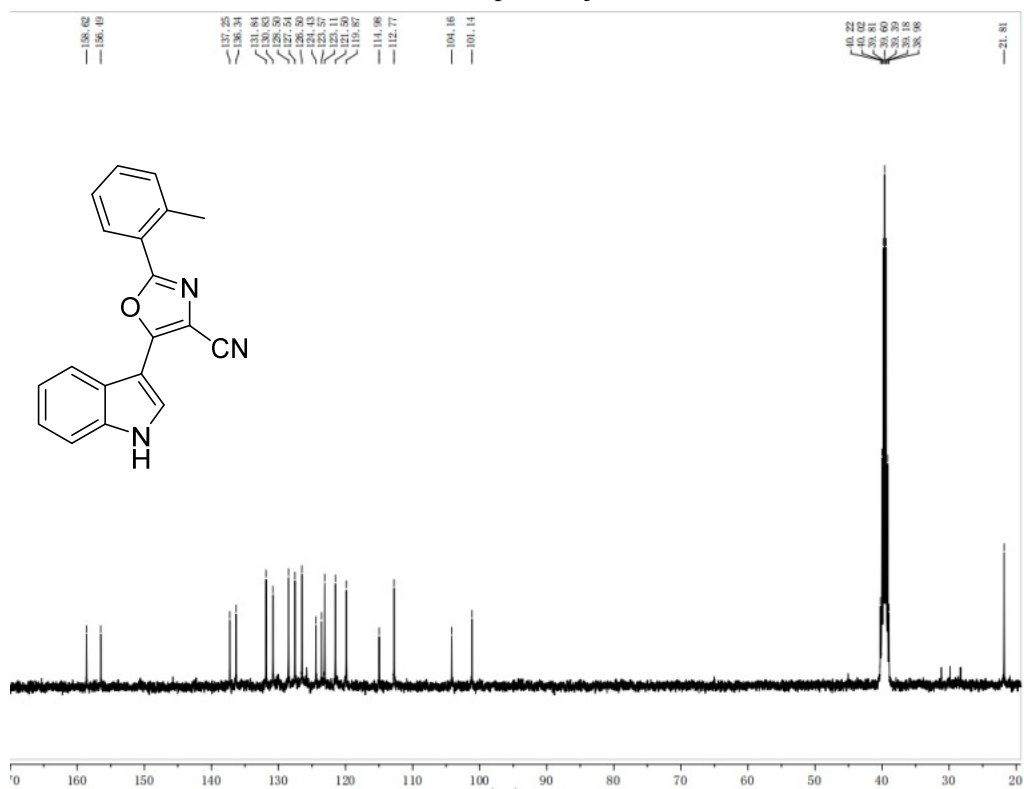
Compound 3h



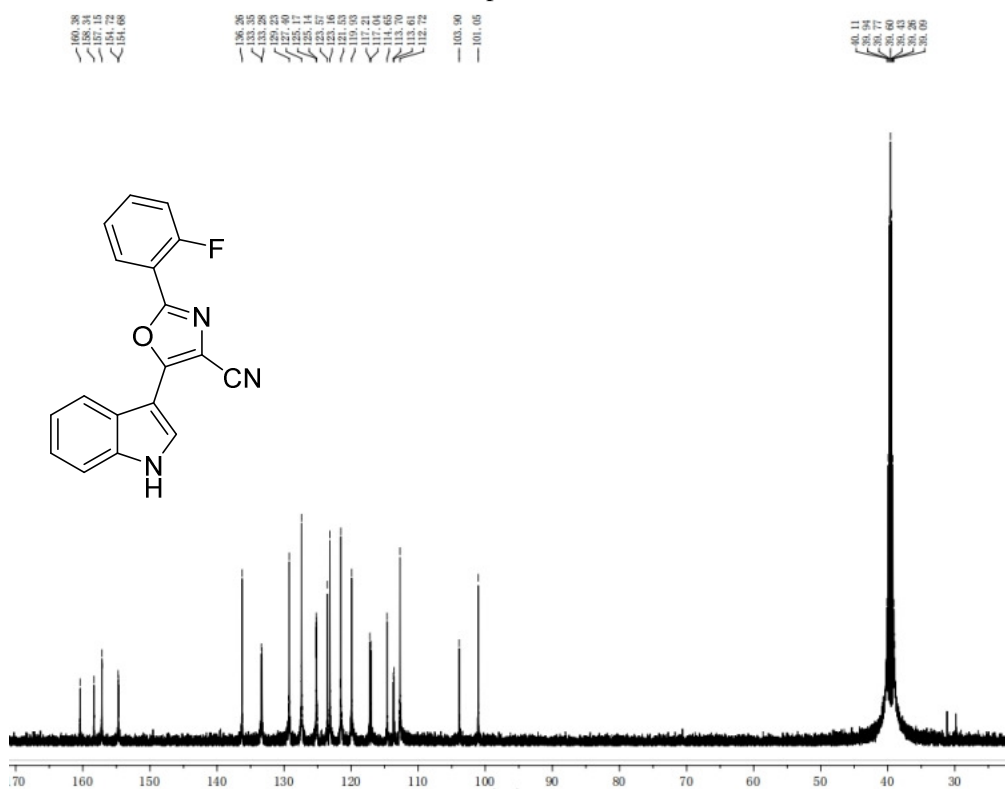
Compound 3i



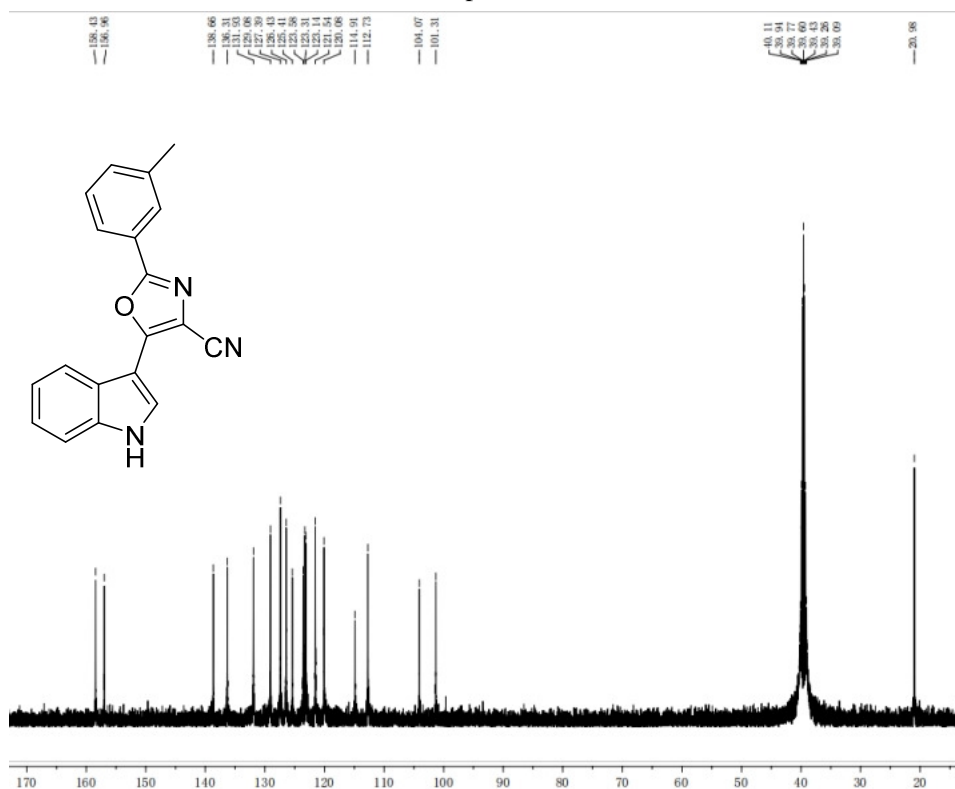
Compound 3j



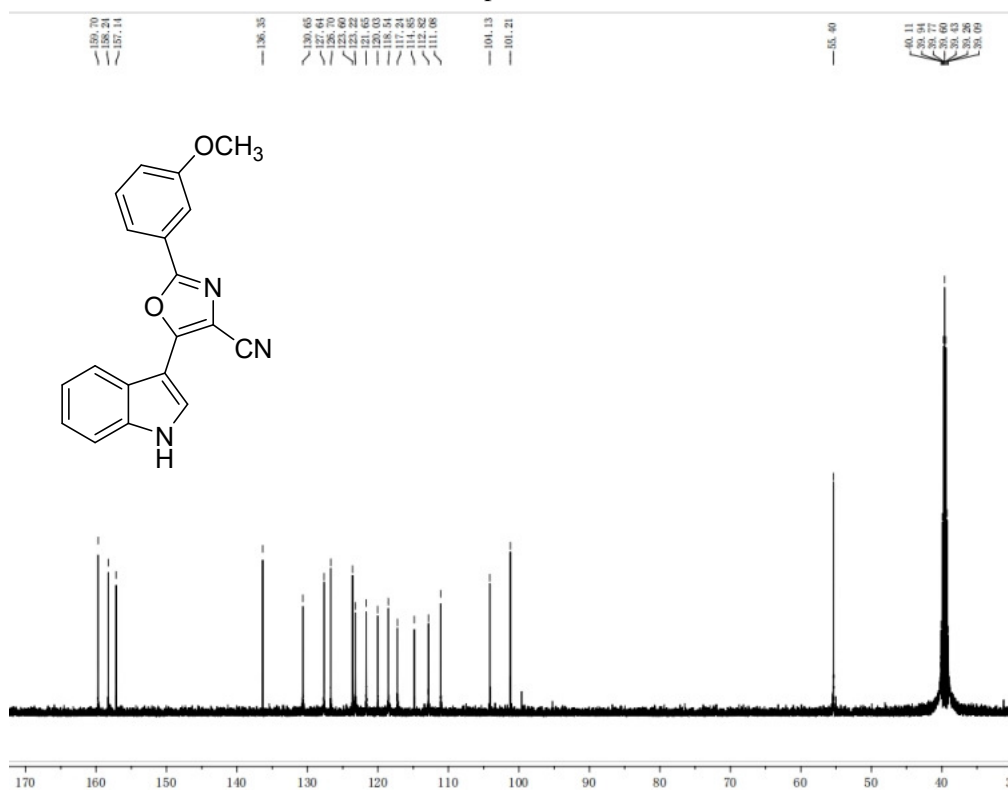
Compound 3k



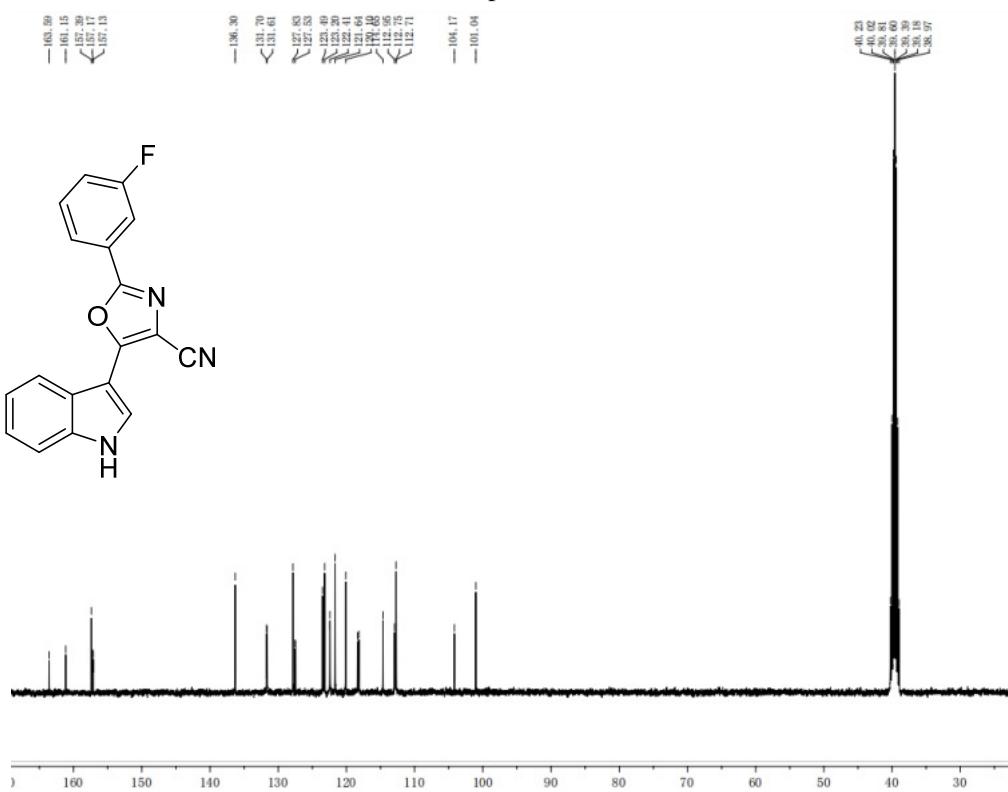
Compound 3l



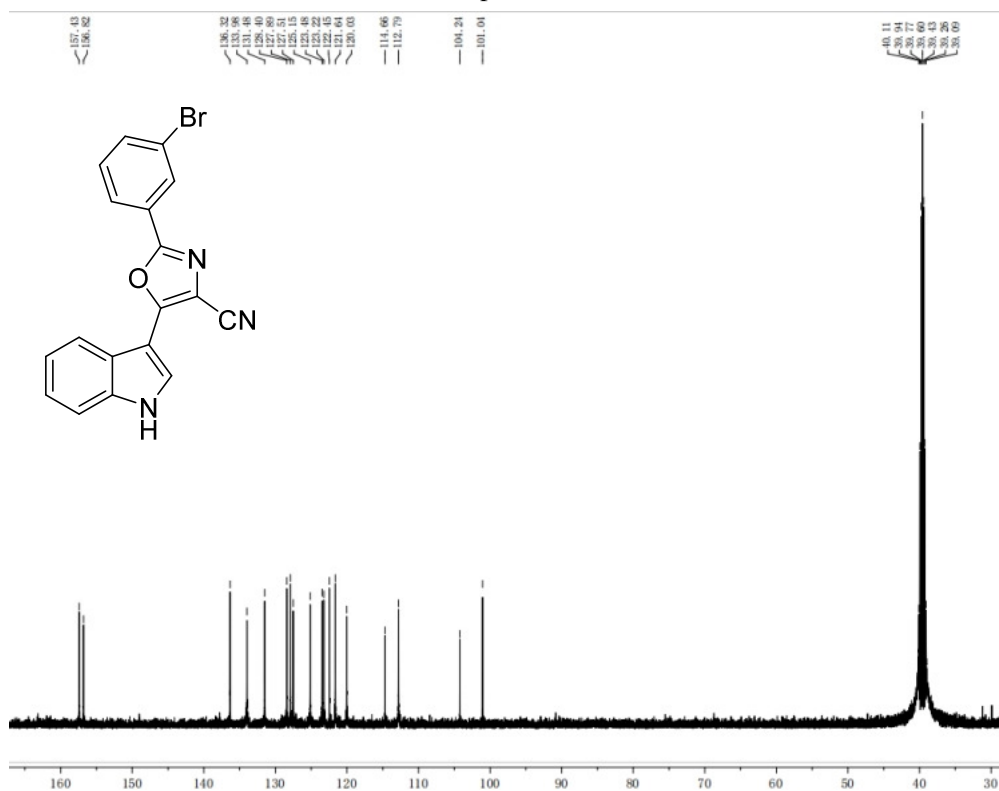
Compound 3m



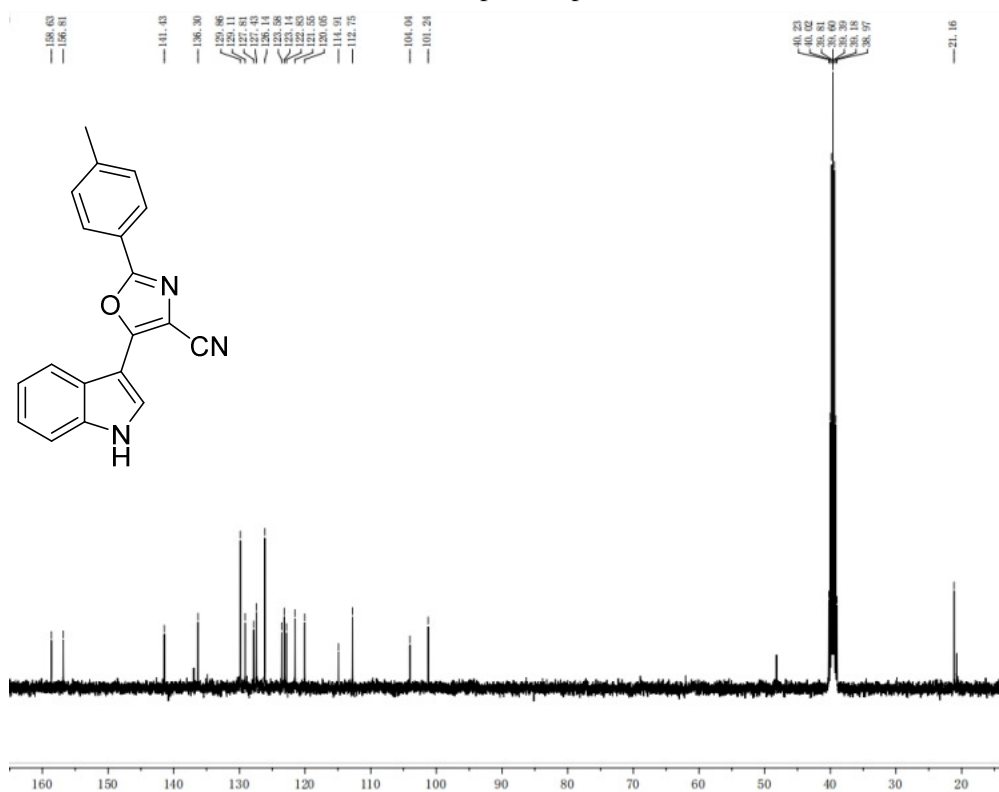
Compound 3n



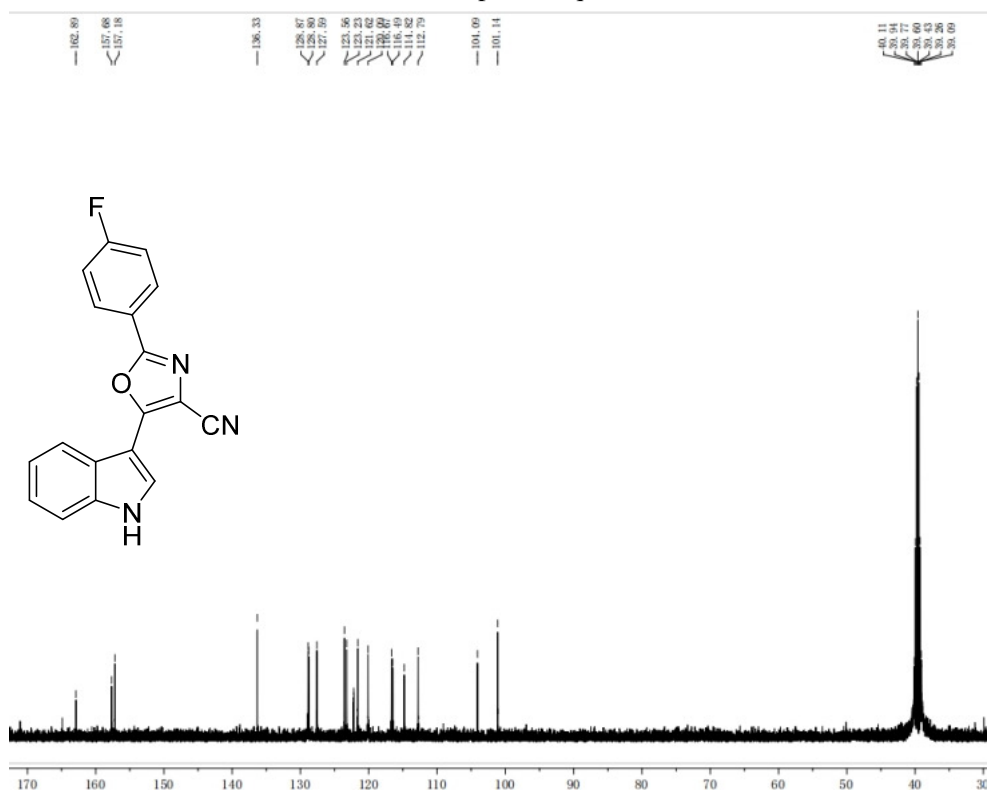
Compound 3o



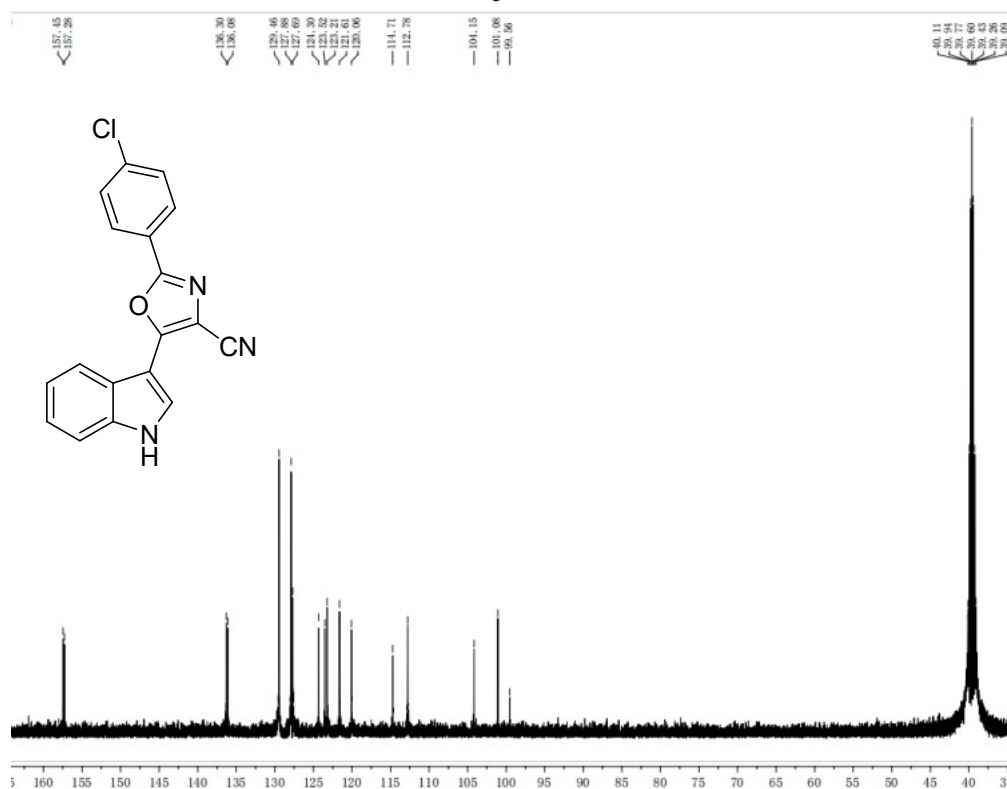
Compound 3p



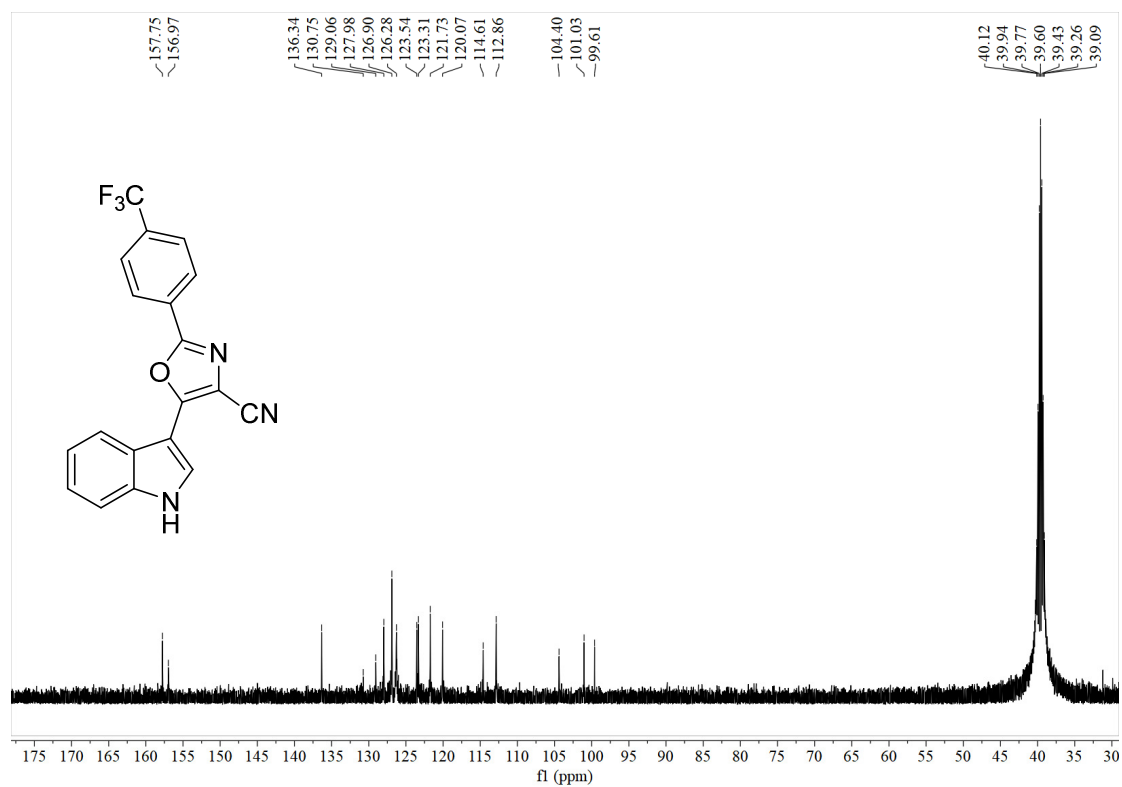
Compound 3q



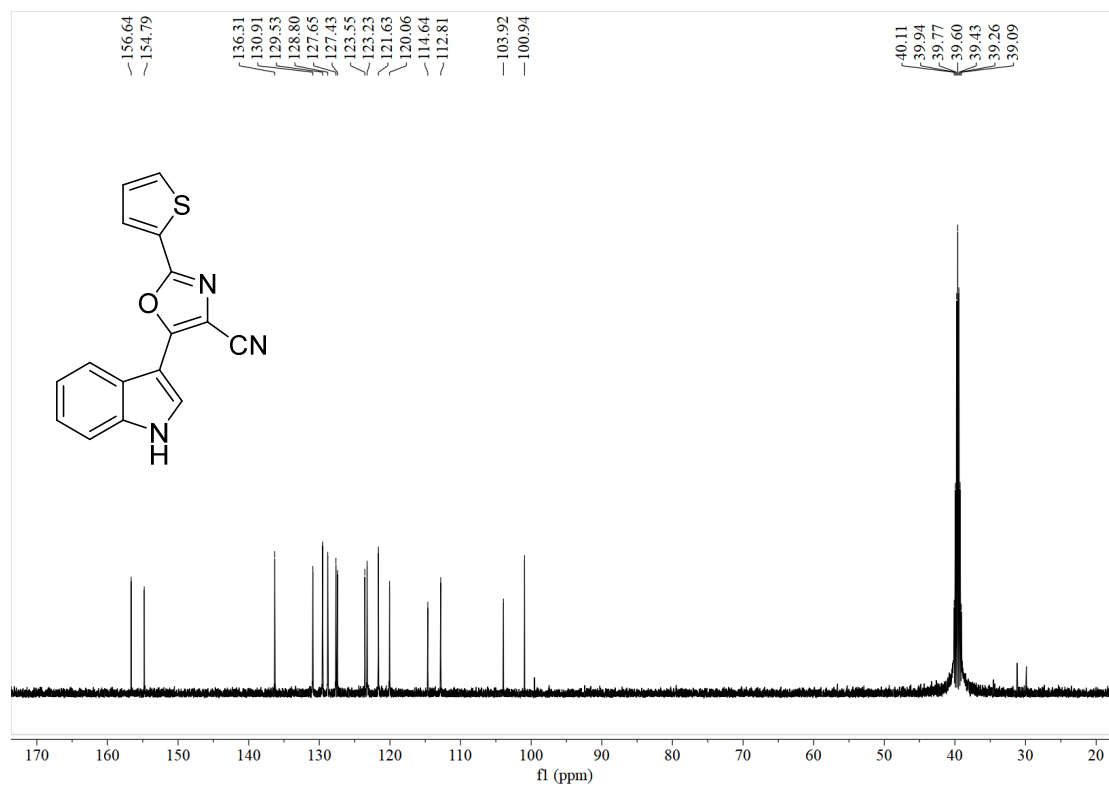
Compound 3r



Compound 3s



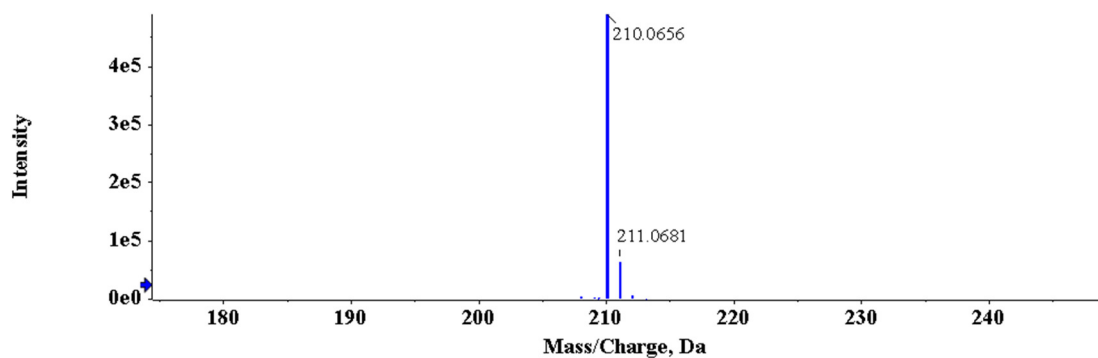
Compound 3t



3. HR-MS

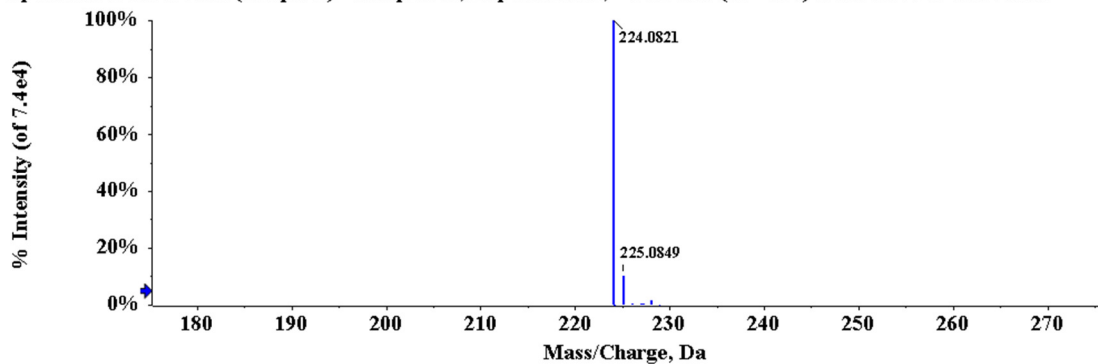
Compound 3a

Spectrum from 11.wiff (sample 1) - Sample011, Experiment 1, +TOF MS (100 - 800) from 0.097 to 0.108 min



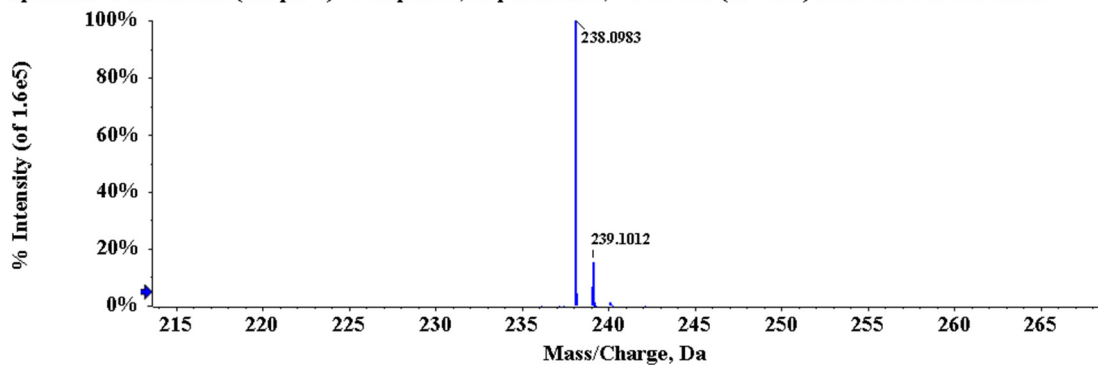
Compound 3b

Spectrum from 09.wiff (sample 1) - Sample009, Experiment 1, +TOF MS (50 - 800) from 0.076 to 0.087 min



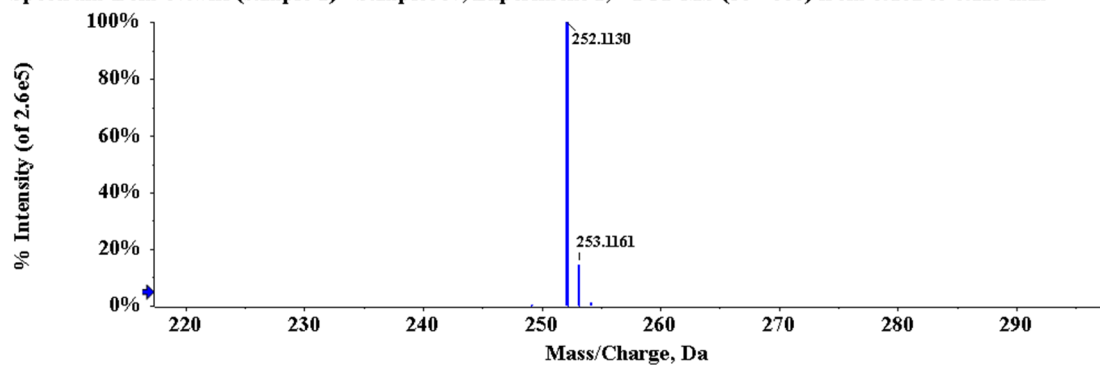
Compound 3c

Spectrum from 06.wiff (sample 1) - Sample006, Experiment 1, +TOF MS (50 - 800) from 0.080 to 0.091 min



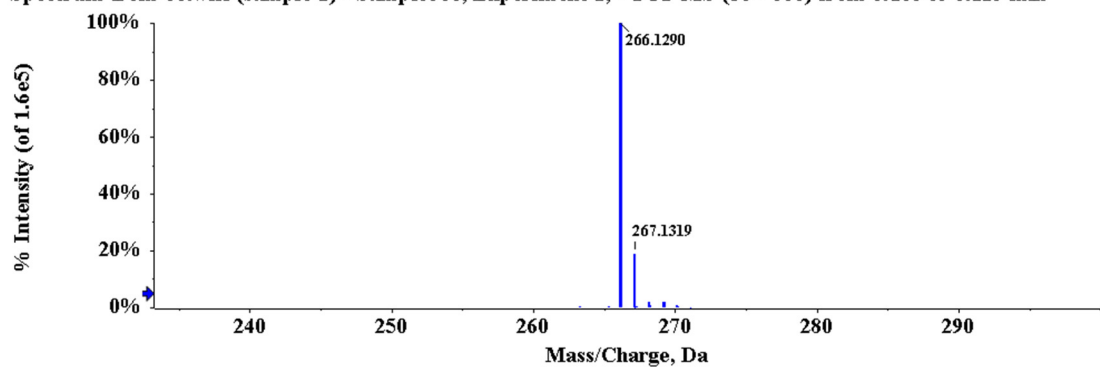
Compound 3d

Spectrum from 07.wiff (sample 1) - Sample007, Experiment 1, +TOF MS (50 - 800) from 0.102 to 0.113 min



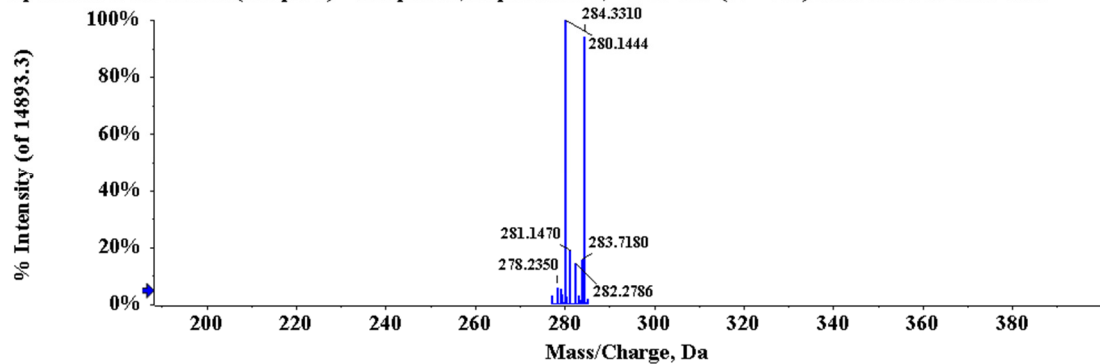
Compound 3e

Spectrum from 08.wiff (sample 1) - Sample008, Experiment 1, +TOF MS (50 - 800) from 0.103 to 0.113 min



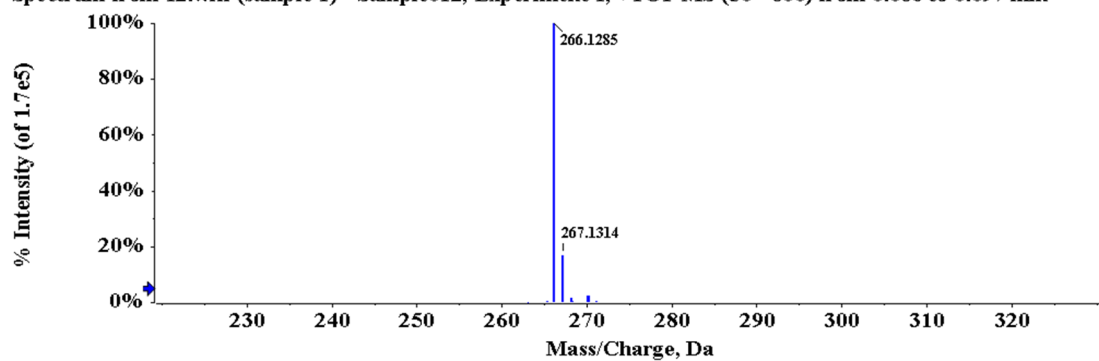
Compound 3f

Spectrum from 11.wiff (sample 1) - Sample011, Experiment 1, +TOF MS (50 - 800) from 0.097 to 0.109 min



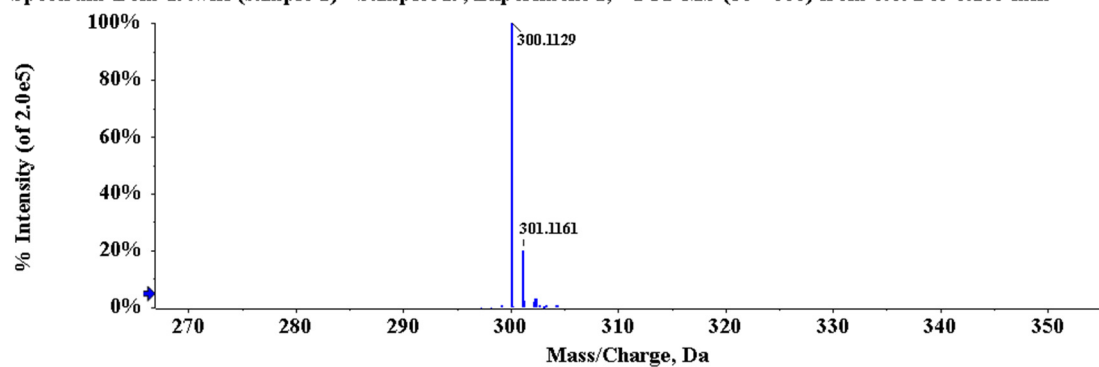
Compound 3g

Spectrum from 12.wiff (sample 1) - Sample012, Experiment 1, +TOF MS (50 - 800) from 0.086 to 0.097 min



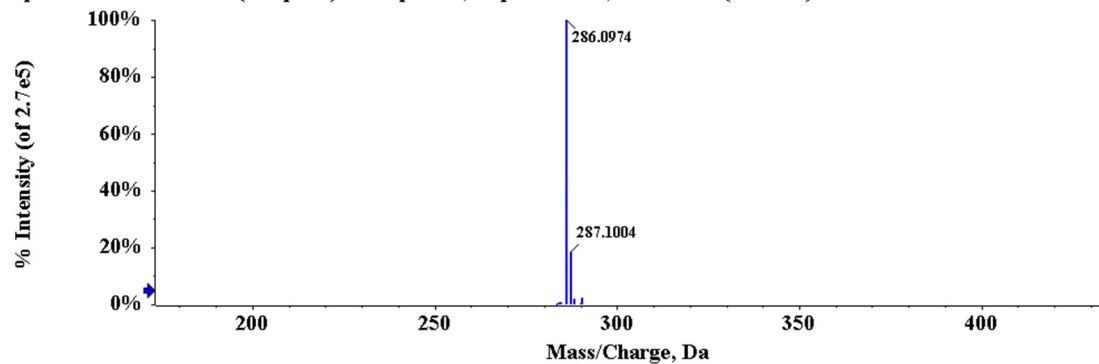
Compound 3h

Spectrum from 19.wiff (sample 1) - Sample019, Experiment 1, +TOF MS (50 - 800) from 0.092 to 0.103 min



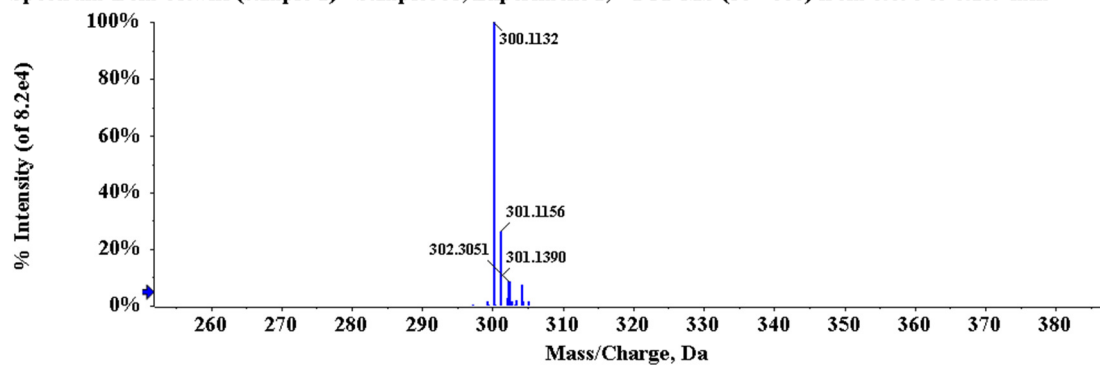
Compound 3i

Spectrum from 01.wiff (sample 1) - Sample001, Experiment 1, +TOF MS (50 - 800) from 0.097 to 0.107 min



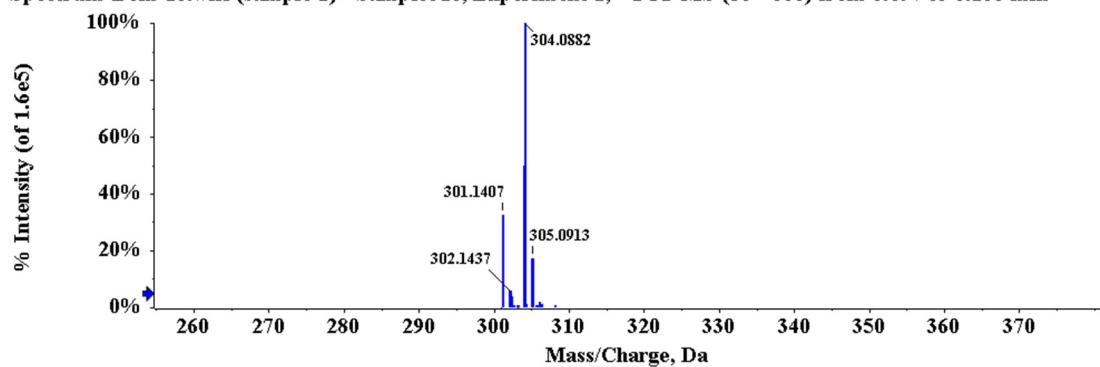
Compound 3j

Spectrum from 05.wiff (sample 1) - Sample005, Experiment 1, +TOF MS (50 - 800) from 0.098 to 0.109 min



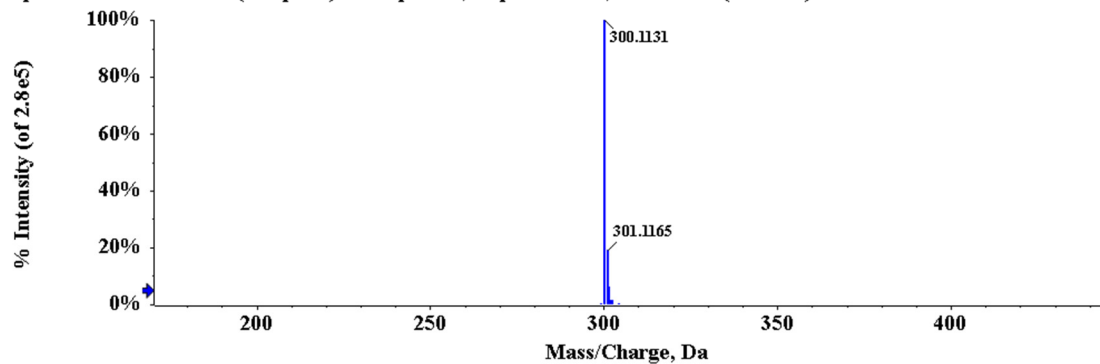
Compound 3k

Spectrum from 18.wiff (sample 1) - Sample018, Experiment 1, +TOF MS (50 - 800) from 0.097 to 0.108 min



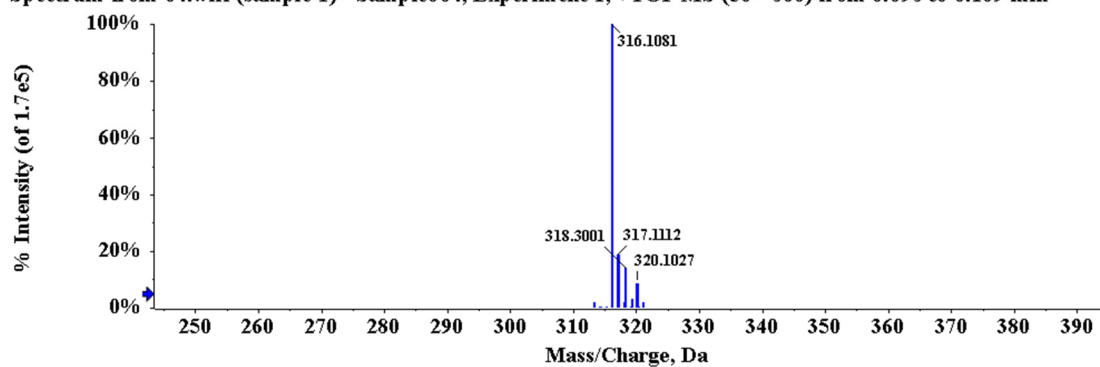
Compound 3l

Spectrum from 03.wiff (sample 1) - Sample003, Experiment 1, +TOF MS (50 - 800) from 0.097 to 0.108 min



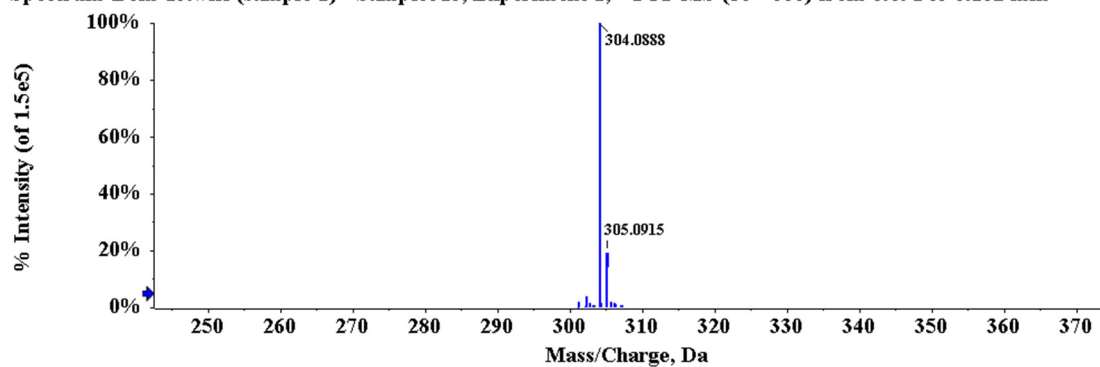
Compound 3m

Spectrum from 04.wiff (sample 1) - Sample004, Experiment 1, +TOF MS (50 - 800) from 0.098 to 0.109 min



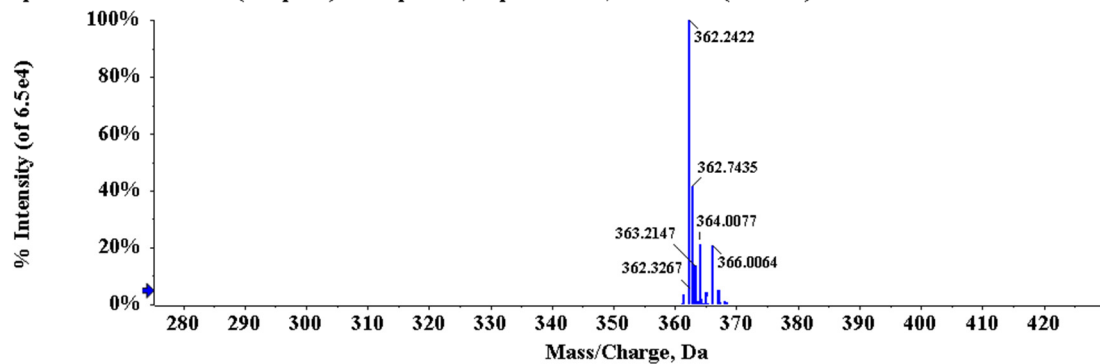
Compound 3n

Spectrum from 13.wiff (sample 1) - Sample013, Experiment 1, +TOF MS (50 - 800) from 0.091 to 0.102 min



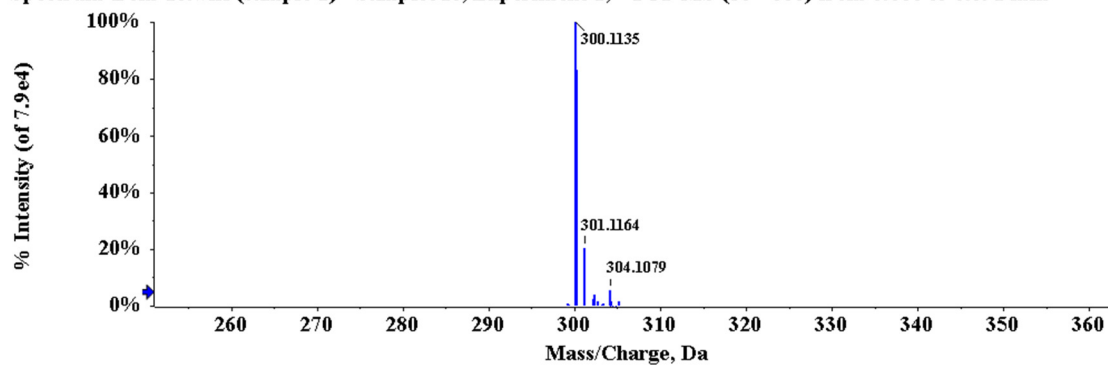
Compound 3o

Spectrum from 16.wiff (sample 1) - Sample016, Experiment 1, +TOF MS (50 - 800) from 0.087 to 0.098 min



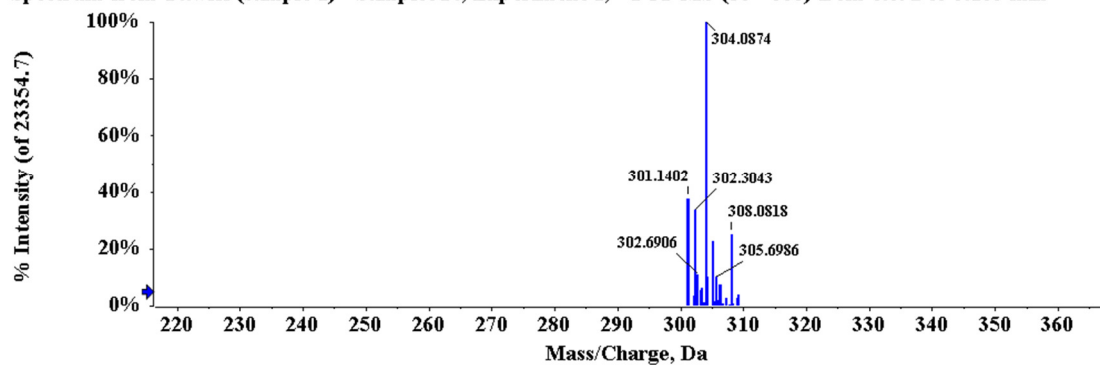
Compound 3p

Spectrum from 10.wiff (sample 1) - Sample010, Experiment 1, +TOF MS (50 - 800) from 0.080 to 0.091 min



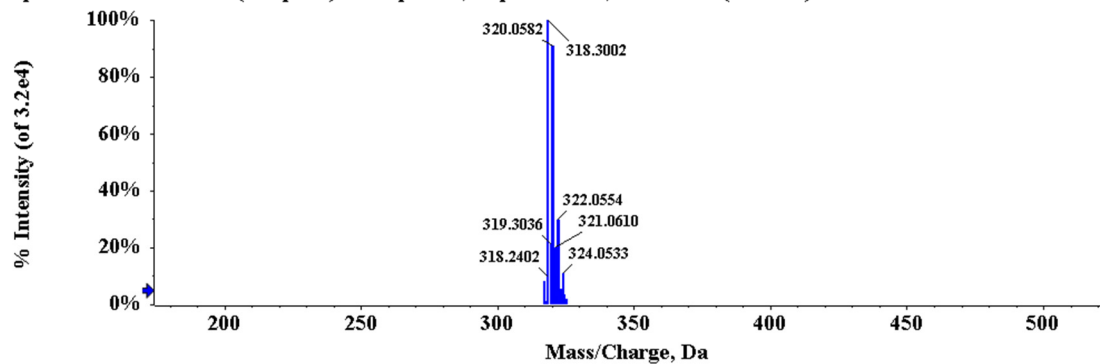
Compound 3q

Spectrum from 14.wiff (sample 1) - Sample014, Experiment 1, +TOF MS (50 - 800) from 0.092 to 0.103 min



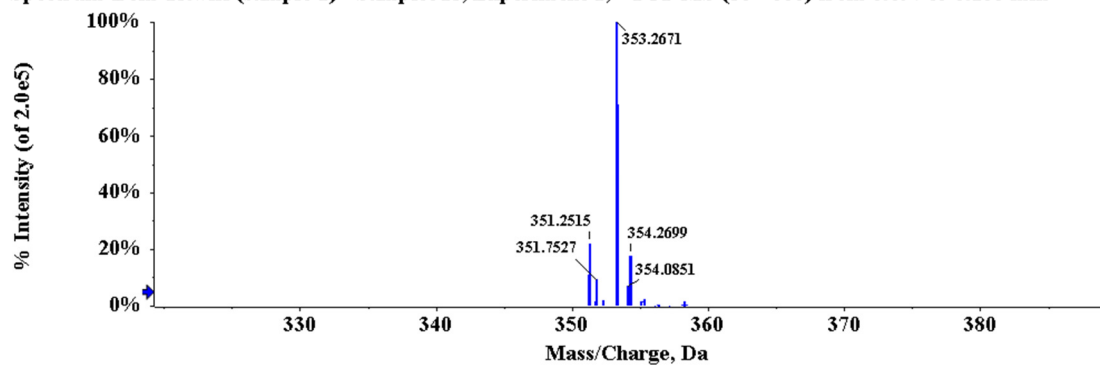
Compound 3r

Spectrum from 02.wiff (sample 1) - Sample002, Experiment 1, +TOF MS (50 - 800) from 0.103 to 0.114 min



Compound 3s

Spectrum from 15.wiff (sample 1) - Sample015, Experiment 1, +TOF MS (50 - 800) from 0.097 to 0.108 min



Compound 3t

Spectrum from 17.wiff (sample 1) - Sample017, Experiment 1, +TOF MS (50 - 800) from 0.098 to 0.108 min

