

Figure S1. Elution profiles of PRFs derived from Alcalase (a) and Esperase (b) hydrolysates. The fractions were collected at different elution times (in minutes): a) 6 (A_I), 7 (A_{II}), 8-12 (A_{III}), 19-22 (A_{IV}), 23-30 (A_V); b) 6-8 (E_I), 18-19 (E_{II}), 20-22 (E_{III}), 23-25 (E_{IV}).

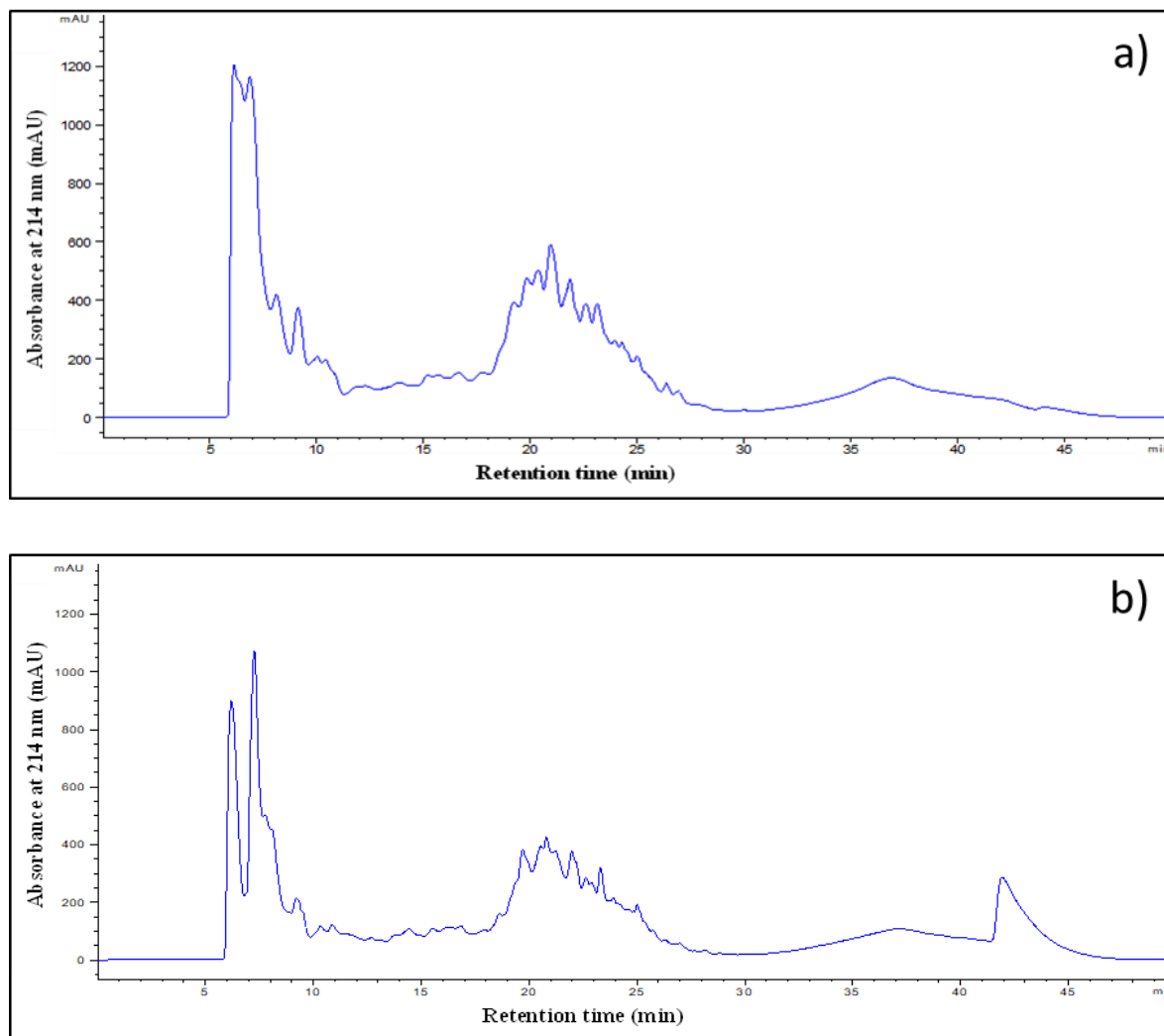


Figure S2. Elution profiles of PRFs that showed the most potent ACE-inhibiting activity, at 214 nm (in red) and 280 nm (in green). The fractions were collected at different elution times (in minutes): A_{IV}: 9.5-11.5 (A_{IV-1}), 11.5-12 (A_{IV-2}), 12-14,5 (A_{IV-3}); 14.5-15.5 (A_{IV-4}), 15.5-17 (A_{IV-5}), 17-19,5 (A_{IV-6}); A_V: 15.5-17.5 (A_{V-1}), 17.5-19.5 (A_{V-2}), 19.5-21.5 (A_{V-3}), 21.5-27 (A_{V-4}); E_{IV}: 12-13 (E_{IV-1}), 13-15 (E_{IV-2}), 15-16 (E_{IV-3}), 16-19 (E_{IV-4}), 19-20 (E_{IV-5}).

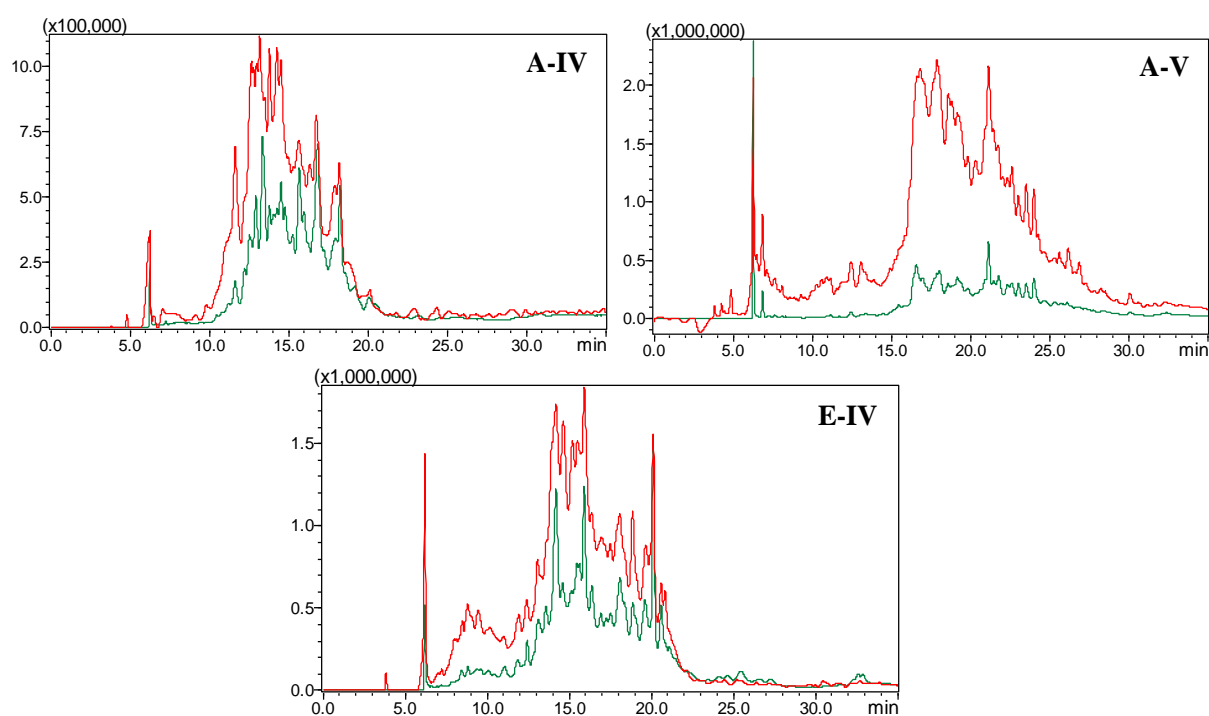


Table S1: ACE-inhibitory activity of fractions obtained by chromatography at a final concentration of 0.12 mg/ml (dried weight).

HPLC Sub-fractions		ACE inhibition (%)
Esperase-PRF	E _I	86.59±0.48
	E _{II}	85.33±2.01
	E _{III}	84.32±0.43
	E _{IV}	93.25±3.06
Alcalase-PRF	A _I	35.93±1.99
	A _{II}	52.69±0.80
	A _{III}	70.37±0.78
	A _{IV}	84.25±0.65
	A _V	86.06±0.30

Table S2: ACE-inhibitory activity of sub-fractions obtained by chromatography at a final concentration of 13 µg/ml (dried weight) and IC₅₀ values of those showing the most potent activity.

HPLC Sub-fractions		ACE inhibition (%)	IC ₅₀ value (µg/ml)
E_{IV}	E _{IV} -1	23.17±2.37	33±3
	E _{IV} -2	No activity	
	E _{IV} -3	16.86±0.75	
	E _{IV} -4	10.56±3.77	
	E _{IV} -5	No activity	
A_{IV}	A _{IV} -1	7.90±3.40	29±6
	A _{IV} -2	38.46±0.23	
	A _{IV} -3	6.01±0.85	
	A _{IV} -4	14.47±2.56	
	A _{IV} -5	44.95±2.35	
	A _{IV} -6	No activity	
A_V	A _V -1	16.30±0.15	
	A _V -2	2.86±0.67	
	A _V -3	11.06±2.34	
	A _V -4	2.86±0.53	