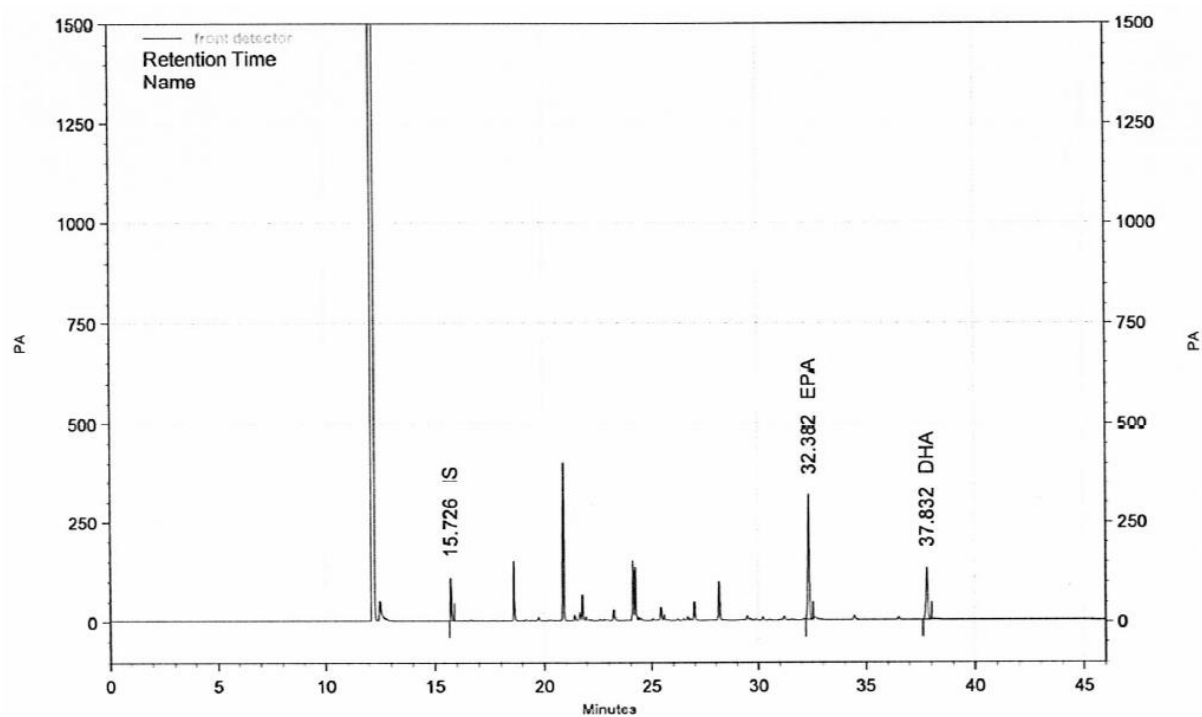
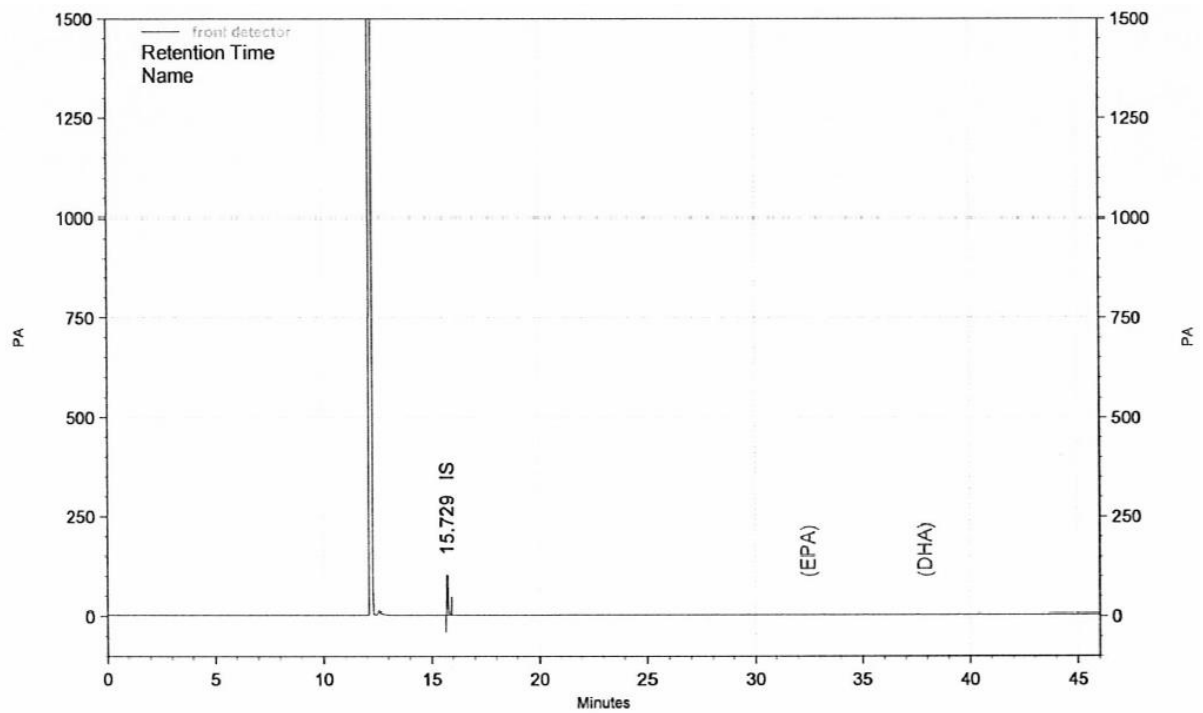


Figure S1: GC analysis of KO for EPA+DHA contents

[Krill oil; EPA+DHA]



[Blank; EPA+DHA]



[Standard; EPA+DHA]

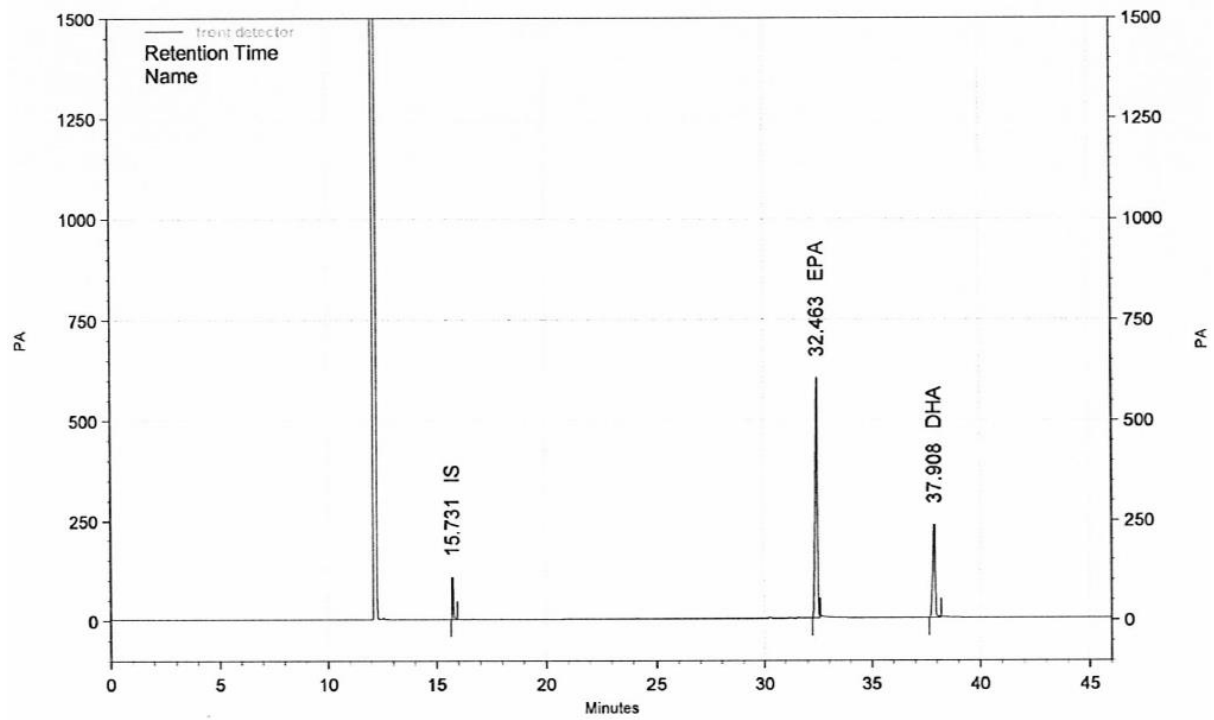


Table S1. Primer sequences for real-time RT-PCR

Target	5' – 3'	Sequence
Hyaluronic acid synthase 1	Sense	GCATGGGCTATGCTACCAAGTAT
	Antisense	AGGAGGGCGTCTCCGAGTA
Hyaluronic acid synthase 2	Sense	GACCCTATGGTTGGAGGTGTTG
	Antisense	ACGCTGCTGAGGAAGGAGATC
Hyaluronic acid synthase 3	Sense	AGACCGAGCTAGCCTTCCTAGT
	Antisense	TAATGGCCAGATACAGCATGAG
Collagen type I alpha 1	Sense	GCGGTAACGATGGTGCTGTT
	Antisense	CTTACCCTTAGCACCAAC
Collagen type I alpha 2	Sense	ATTGTCGCCAGTGAG
	Antisense	CTGGTCCTGCTGGT
TGF- $\beta$ 1	Sense	GCAACATGTGGAAGTCTACCAGAA
	Antisense	GACGTCAAAGACAGCCACTCA
p38 MAPK	Sense	CGTTGTTTCCTGGTACAGACC
	Antisense	CCATTCTTCTTGGTCAAGGG
Protein kinase B (AKT)	Sense	TACTCATTCCAGACCCACGA
	Antisense	GAGGTTCTCCAGCTTCAGGT
Matrix metalloprotease-1	Sense	AAGGTTAGCTTACTGTCACACGCTT
	Antisense	CGACTCTAGAAACACAAGAGCAAGA
Matrix metalloprotease-9	Sense	CCCGGACCAAGGATACAG
	Antisense	GGCTTTCTCTCGGTACTG
Matrix metalloprotease-13	Sense	CATCCATCCCGTGACCTTAT
	Antisense	GCATGACTCTCACAATGCGA
Glutathione reductase	Sense	TGCGTGAATGTTGGATGTGTACCC
	Antisense	CCGGCATTCTCCAGTTCCTCG
Nox2	Sense	AGCTATGAGGTGGTGTGTTAGTGG
	Antisense	CACAATATTTGTACCAGACAGACTTGAG
$\beta$ -actin	Sense	AGCTGCGTTTTACACCCTTT
	Antisense	AAGCCATGCCAATGTTGTCT

RT-PCR = reverse transcription polymerase chain reaction; TGF- $\beta$ 1= transforming growth factor (TGF)- $\beta$ 1; MAPK = Mitogen-activated protein kinase; Nox2 = *gp91phox* subunit of the phagocyte NADPH oxidase