

Supporting Information

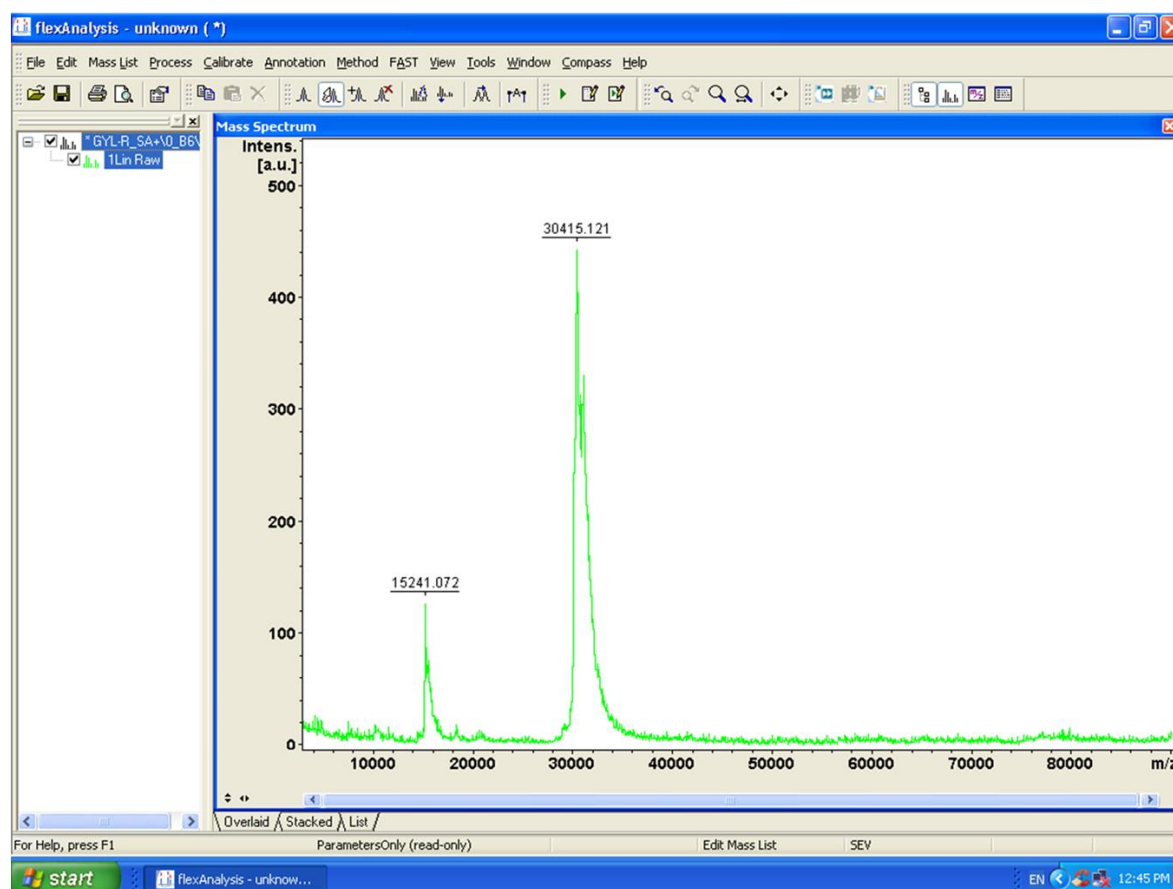
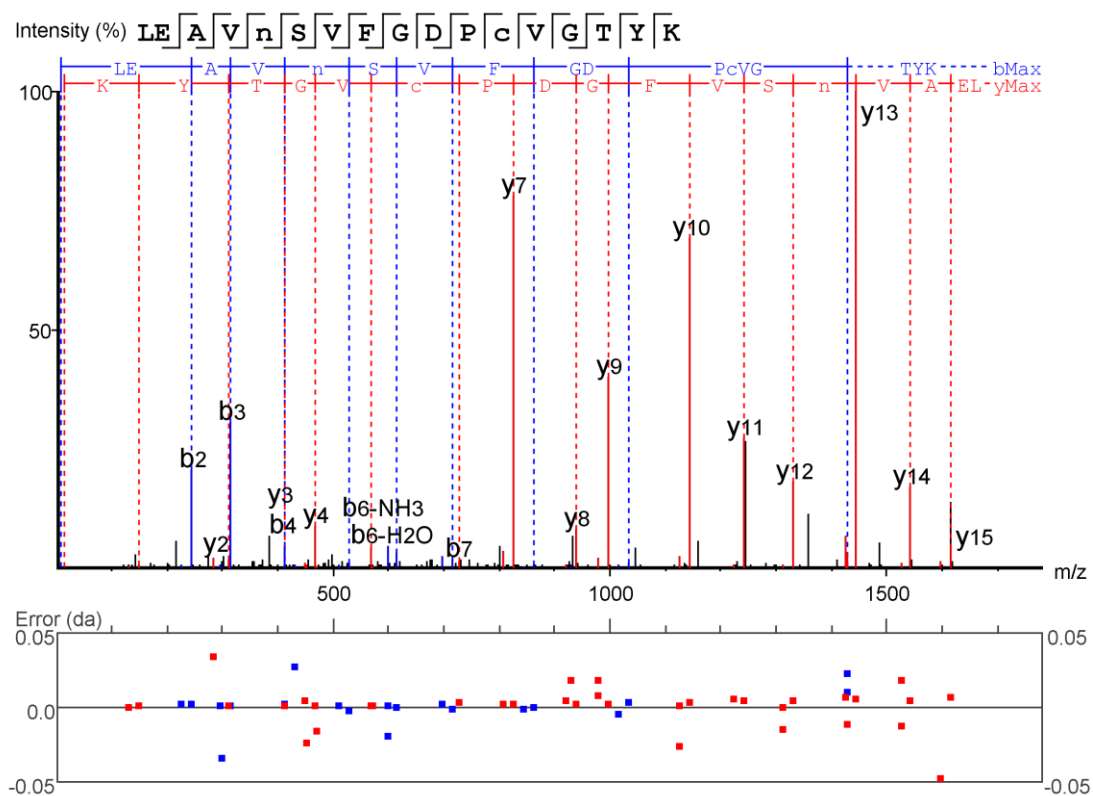
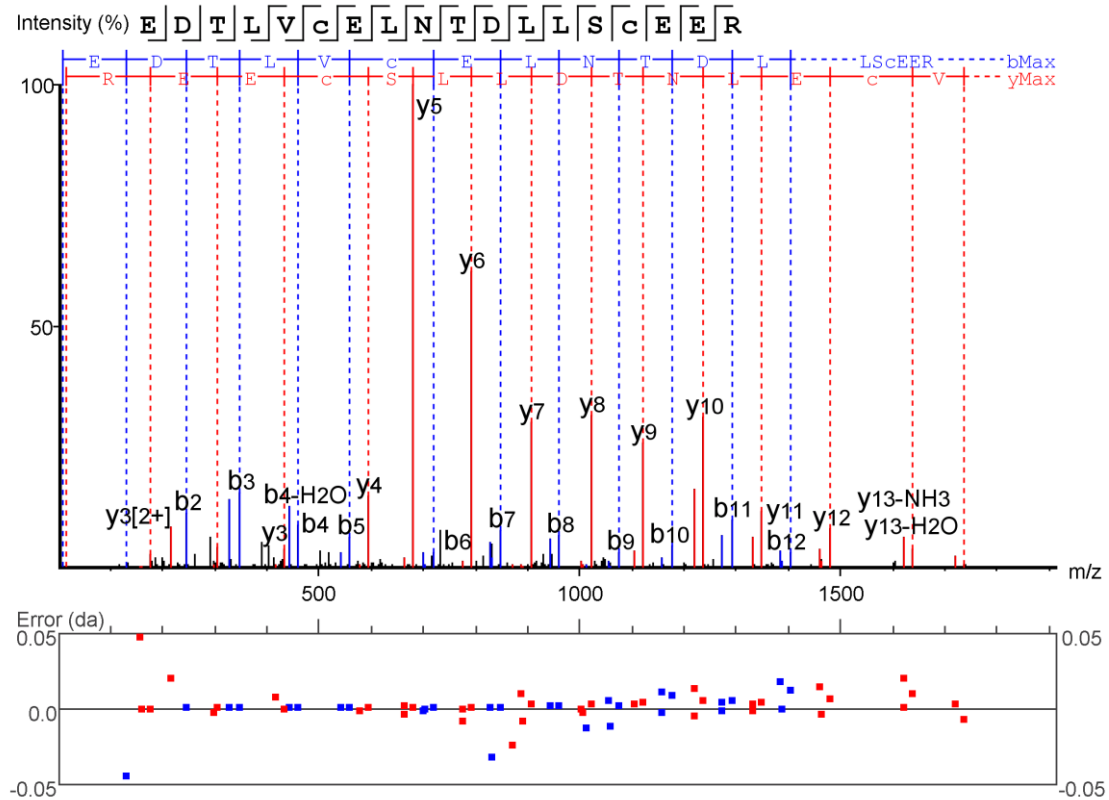


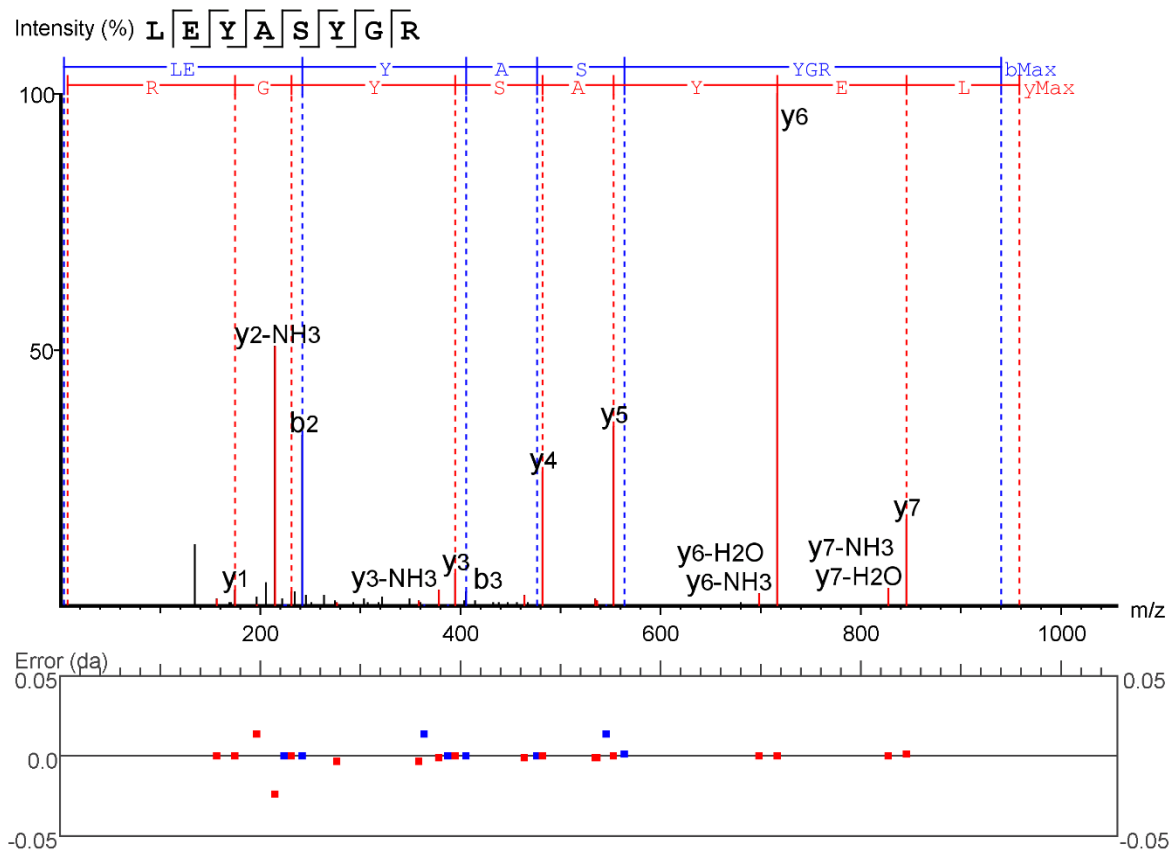
Figure S1. Molecular mass determination of GYL-R via MALDI-TOF mass spectrometry.



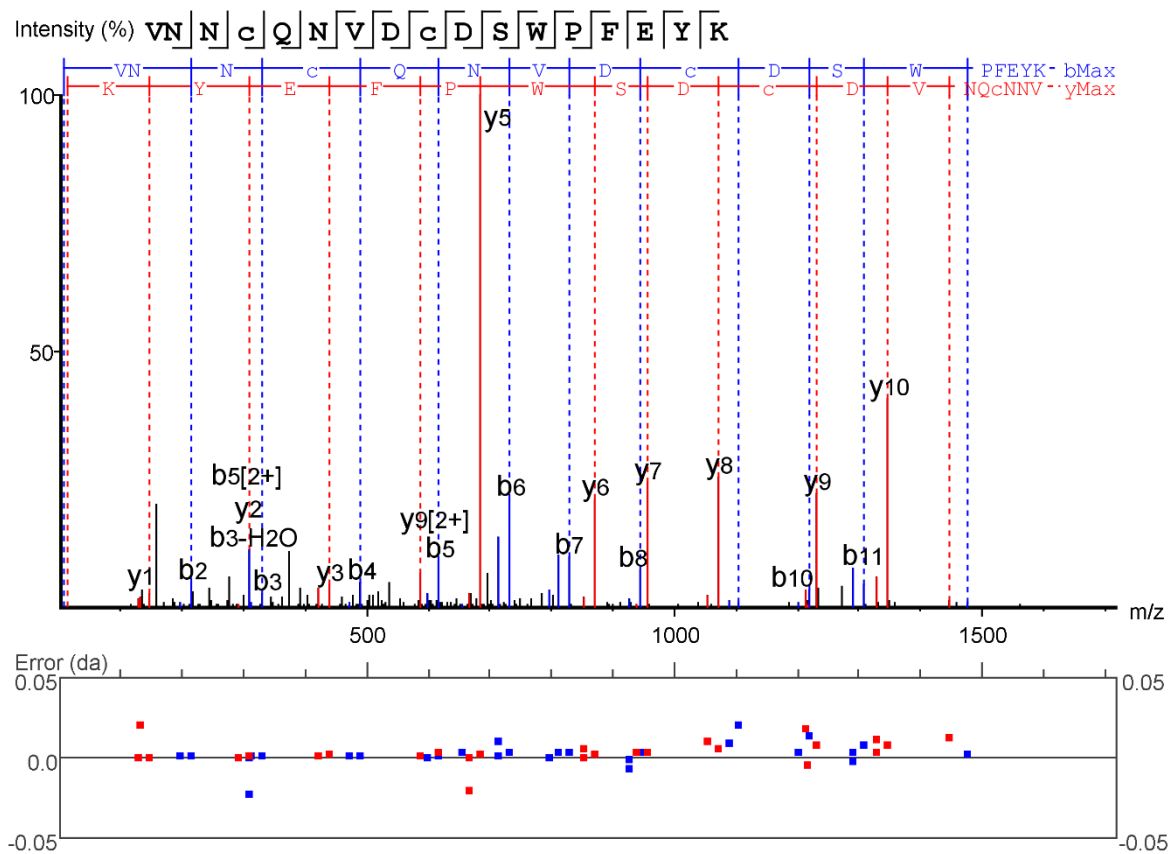
(A)



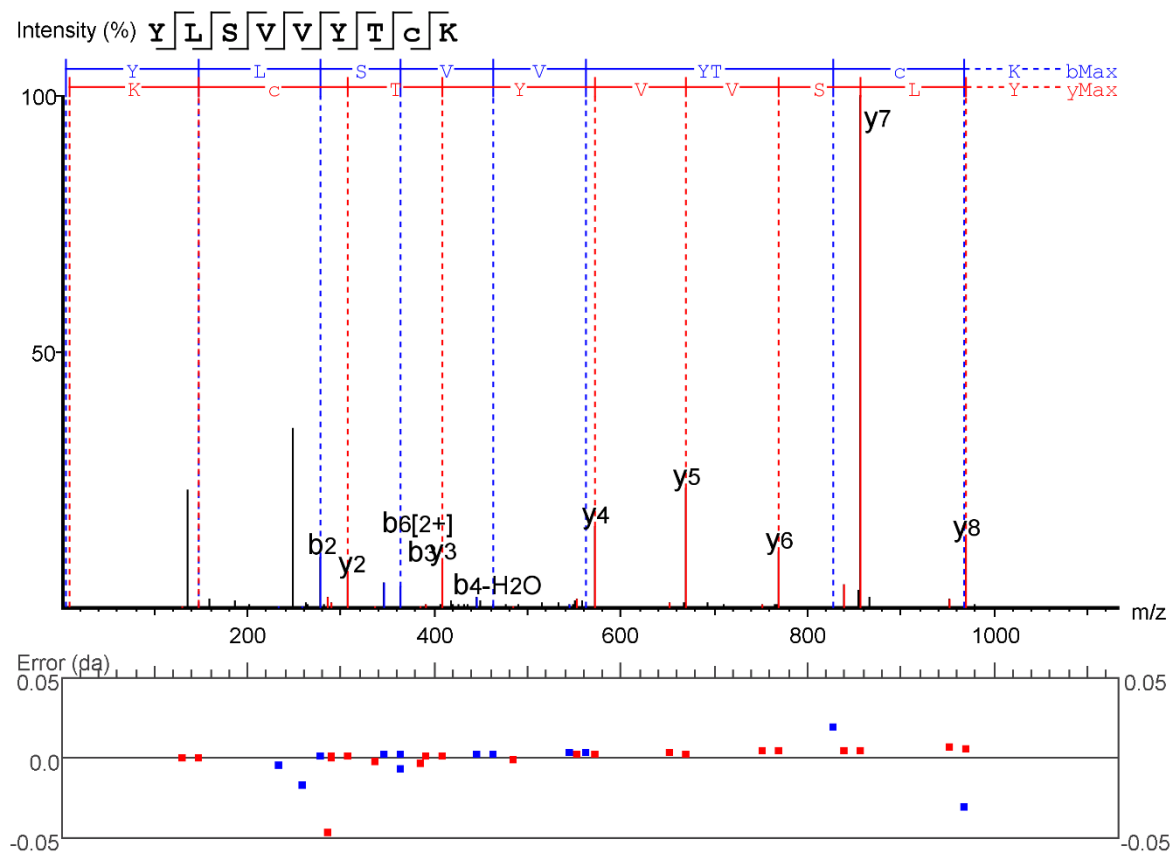
(B)



(C)



(D)



(E)

Figure S2. Spectral data showing fragmentation analysis of peptides of GYL-R. Small letters indicate modified amino acid residues (c – carbamidomethyl Cys, n – deamidation Asn). (**A**) peptide – LEAVNSVFGDPCVGT_{YK}; (**B**) peptide - EDTLVCELNTDLLSCEER; (**C**) peptide – LEYASYGR; (**D**) peptide – VNNCQNVDCDSWPFE_{YK}; (**E**) peptide - YLSVVYTCK.