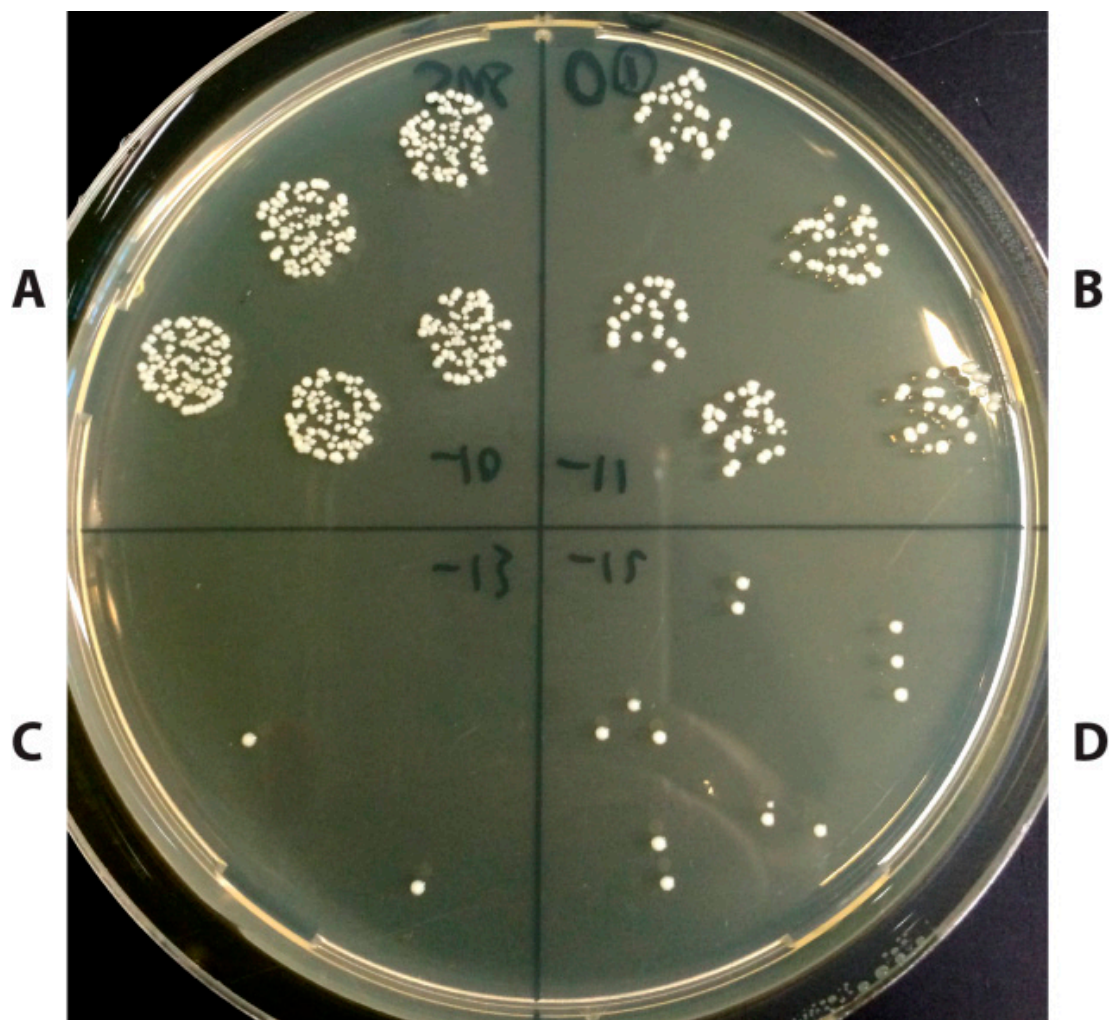
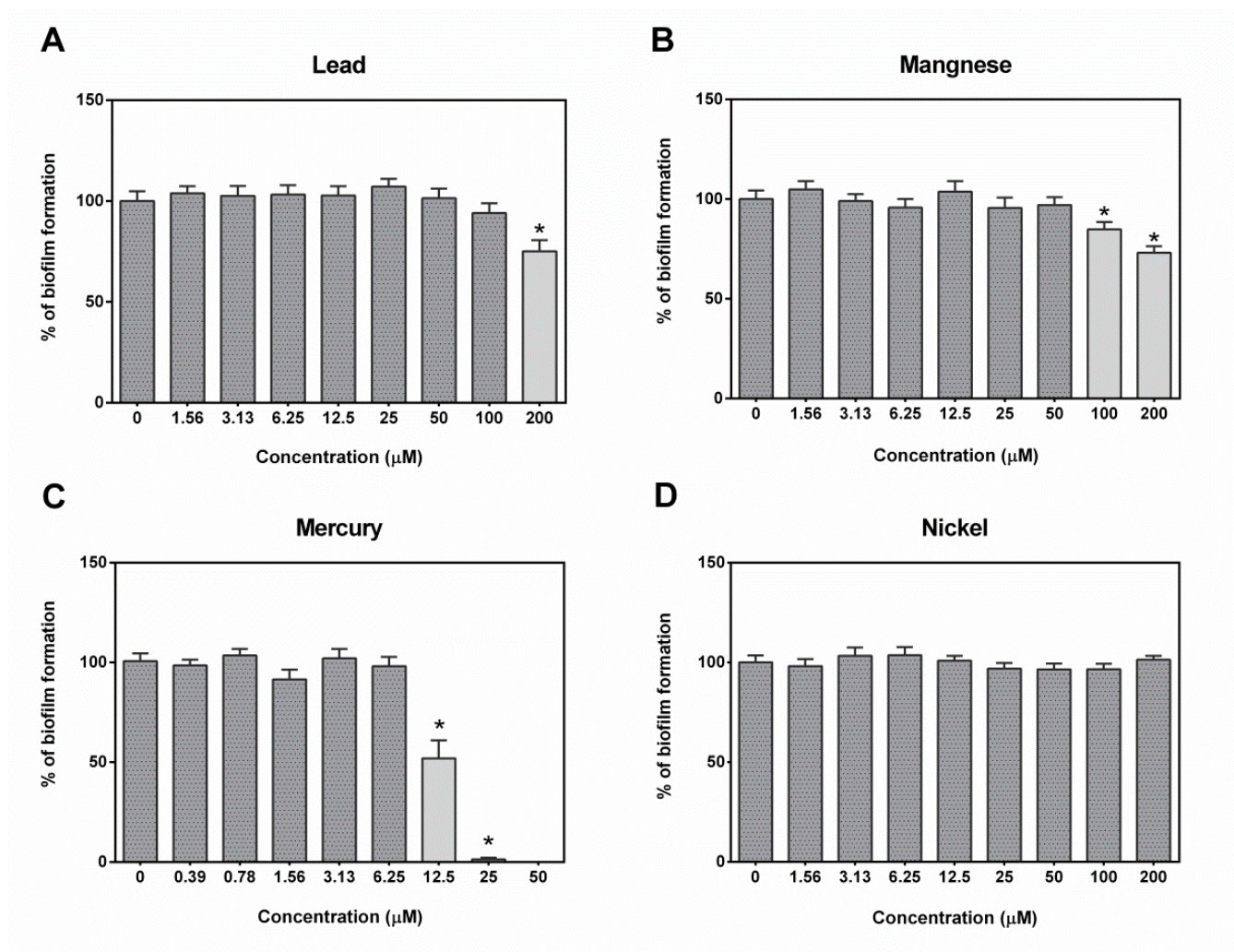


## Cadmium Modulates Biofilm Formation by *Staphylococcus epidermidis*



**Figure S1.** Example of a drop plate assay. Five 10 µL drops of  $10^{10}$ ,  $10^{11}$ ,  $10^{12}$  and  $10^{13}$  times diluted bacterial suspension were dropped on areas **A**, **B**, **C** and **D**, respectively. Bacterial colonies from each drop can be counted after culture the plate 24 h at 37 °C.



**Figure S2.** Mean percentage ( $\pm$  SEM) of *S. epidermidis* (ATCC35984) biofilm formation after exposure to 1.56–200  $\mu$ M lead (A), manganese (B) or 0.39–50 mercury (C), or nickel (D).

\* indicates significant ( $p < 0.01$ ) difference between treatments and control (0  $\mu$ M).