

Figure S1. GC-MS chromatogram resulting from H-ZSM-5 upgraded bio-oil from Kraft Lignin-Toluene Soluble: (a) 673 K; (b) 773 K and; (c) 873 K--MeOH Soluble; (d) 673 K; (e) 773 K and; (f) 873 K.

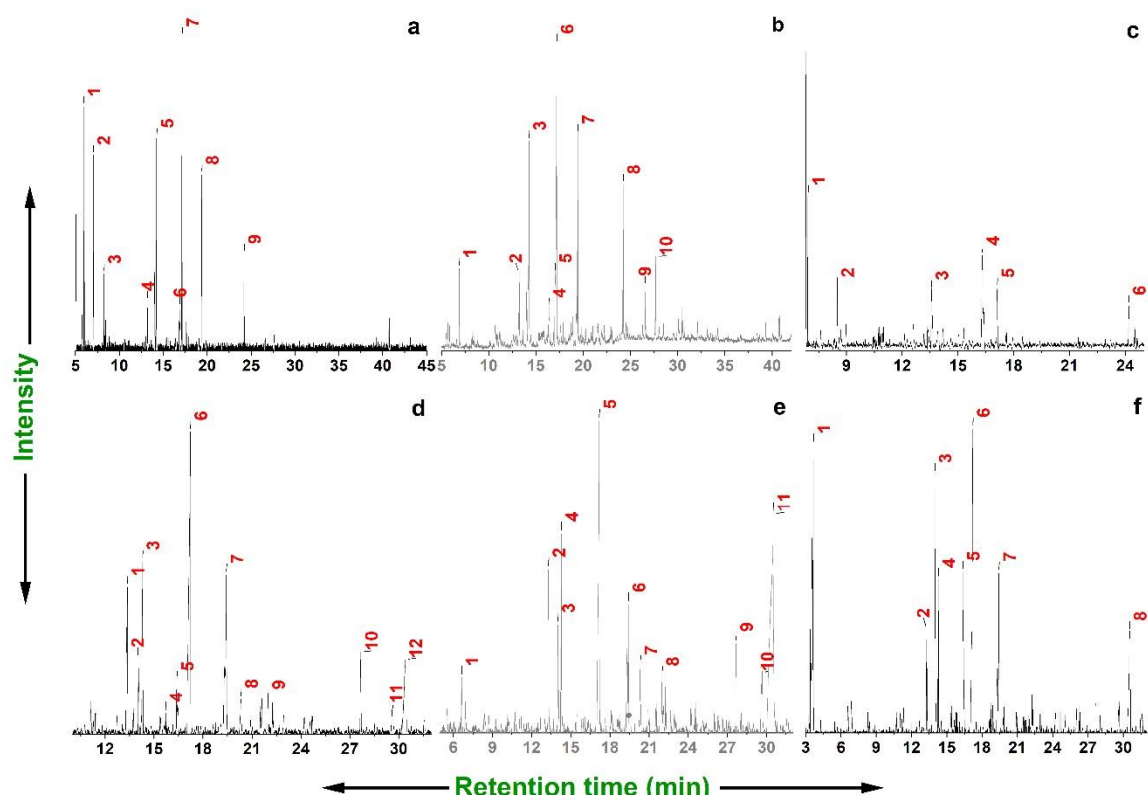


Figure S2. GC-MS chromatogram resulting from H-ZSM-5 upgraded bio-oil from Spruce (Softwood) Toluene Soluble: (a) 673 K; (b) 773 K and; (c) 873 K--MeOH Soluble; (d) 673 K; (e) 773 K and; (f) 873 K